


LOC/DME I-MYF <b>111.95</b> Chan <b>56(Y)</b>	APP CRS <b>281°</b>	Rwy Idg <b>3399</b> TDZE <b>423</b> Apt Elev <b>427</b>
---	------------------------	---

# ILS or LOC RWY 28R

MONTGOMERY-GIBBS EXEC (MYF)

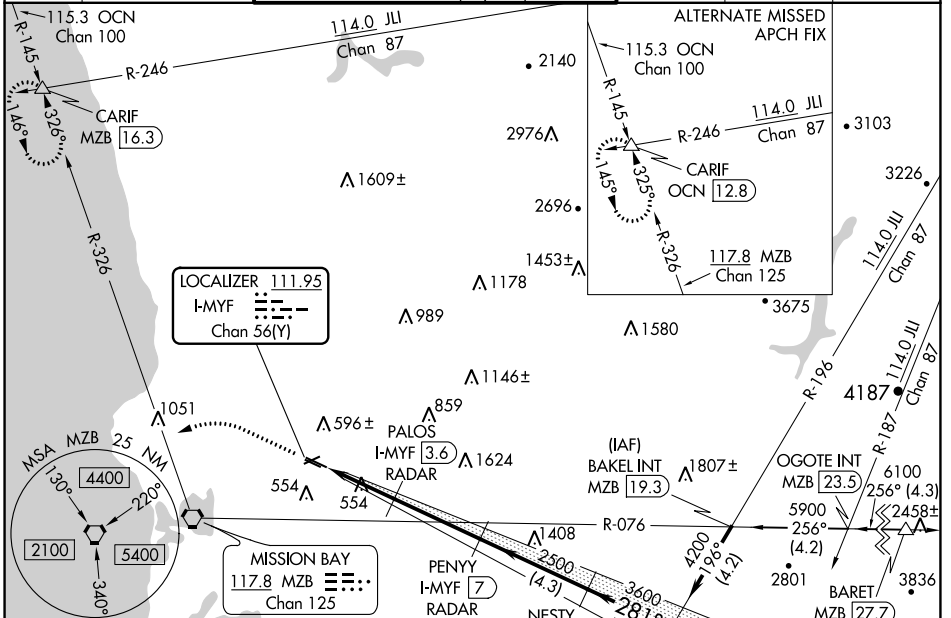
DME or RADAR required.

⚠ Circling Rwy 10L, 23, 28L NA at night. Rwy 28R helicopter visibility reduction below 3/4 SM NA. Inop table does not apply to S-ILS all Cats. For inop ALS, increase S-LOC 28R all Cats visibility to 1 SM.

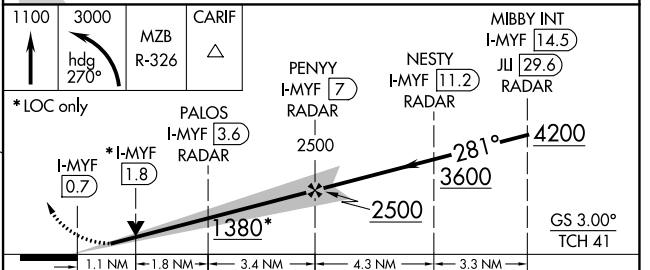
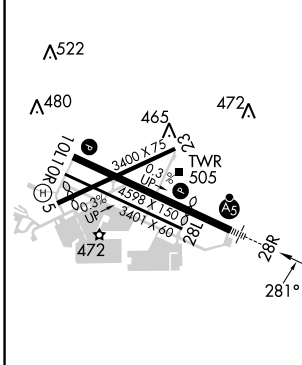
MALSR 

MISSED APPROACH: Climb to 1100 then climbing left turn to 3000 on heading 270° and MZB VORTAC R-326 to CARIF INT/MZB 16.3 DME and hold.

ATIS <b>126.9</b>	SOCAL APP CON <b>124.35 279.625</b>	MONTGOMERY TOWER * <b>119.2</b> (CTAF) <b>0 269.4</b> (Rwys 5, 10L/R, 23, 28L) <b>125.7 269.4</b> (Rwy 28R)	GND CON <b>118.225</b>	CLNC DEL <b>123.725</b>	UNICOM <b>123.075</b>
----------------------	--	---	---------------------------	----------------------------	--------------------------



ELEV <b>427</b>	TDZE <b>423</b>
-----------------	-----------------



REIL Rwy 28L  
MIRL Rwy 10L-28R

FAF to MAP 6.3 NM

Knots	60	90	120	150	180
Min:Sec	6:18	4:12	3:09	2:31	2:06

CATEGORY	A	B	C	D
S-ILS 28R	673-3/4	250 (300-3/4)		NA
S-LOC 28R	820-3/4	397 (400-3/4)		NA
CIRCLING	920-1	493 (500-1)		NA

SW-3, 22 FEB 2024 to 21 MAR 2024

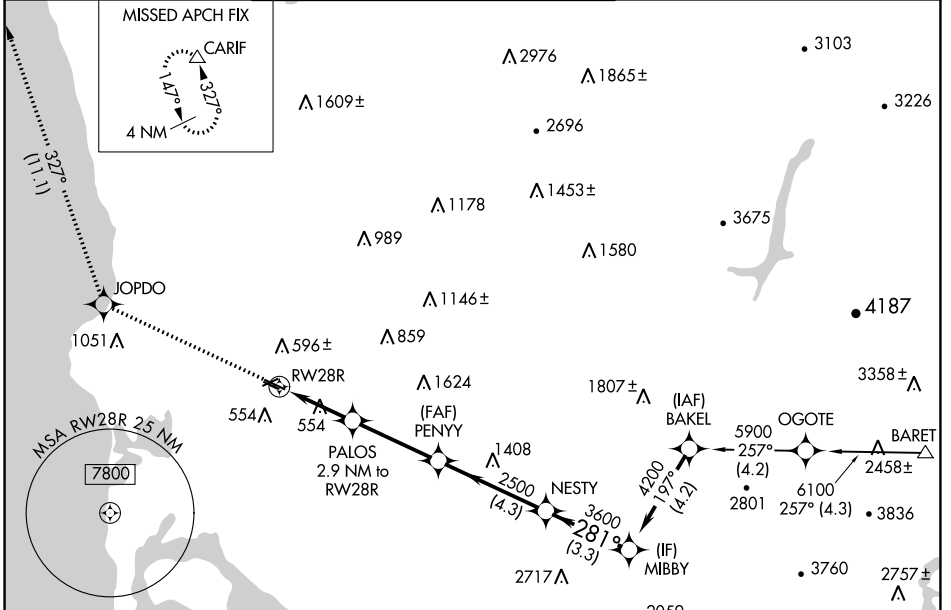
SW-3, 22 FEB 2024 to 21 MAR 2024

WAAS CH <b>45710</b> <b>W28A</b>	APP CRS <b>281°</b>	Rwy Idg TDZE Apt Elev	<b>3399</b> <b>423</b> <b>427</b>
--	------------------------	-----------------------------	---

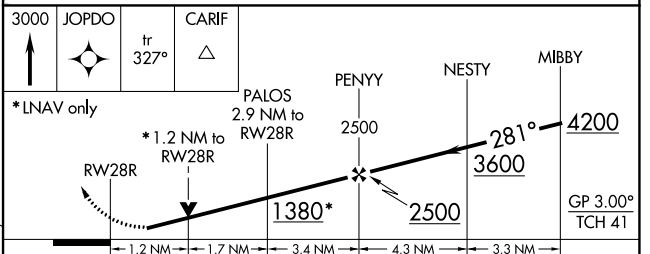
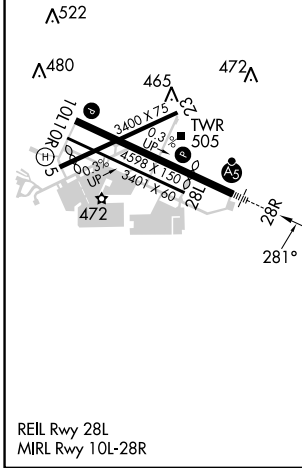
# RNAV (GPS) RWY 28R

MONTGOMERY-GIBBS EXEC (M.Y.F.)

RNP APCH.		MALSR	MISSED APPROACH: Climb to 3000 direct JOPDO and on track 327° to CARIF and hold.		
<p>▼ Rwy 28R helicopter visibility reduction below ¾ SM NA.</p> <p>▲ For uncompensated Baro-VNAV systems, LNAV/VNAV NA below -15°C or above 54°C.</p>					
ATIS <b>126.9</b>	SOCAL APP CON <b>124.35 279.625</b>	MONTGOMERY TOWER ★ <b>119.2</b> (CTAF) <b>0 269.4</b> (Rwys 5, 10L/R, 23, 28L) <b>125.7 269.4</b> (Rwy 28R)	GND CON <b>118.225</b>	CLNC DEL <b>123.725</b>	UNICOM <b>123.075</b>



ELEV <b>427</b>	TDZE <b>423</b>
-----------------	-----------------



CATEGORY	A	B	C	D
LPV DA	673-¾	250 (300-¾)		NA
LNAV/VNAV DA	750-¾	327 (400-¾)		NA
LNAV MDA	840-¾	417 (500-¾)		NA
CIRCLING	920-1	493 (500-1)		NA

SW-3, 22 FEB 2024 to 21 MAR 2024

SW-3, 22 FEB 2024 to 21 MAR 2024