

TACAN NFG Chan <b>55</b>	APCH CRS <b>211°</b>	Rwy/ldg <b>6005</b>
	TDZE <b>78</b>	Aspl Elev <b>78</b>

AL-5985 (USN)

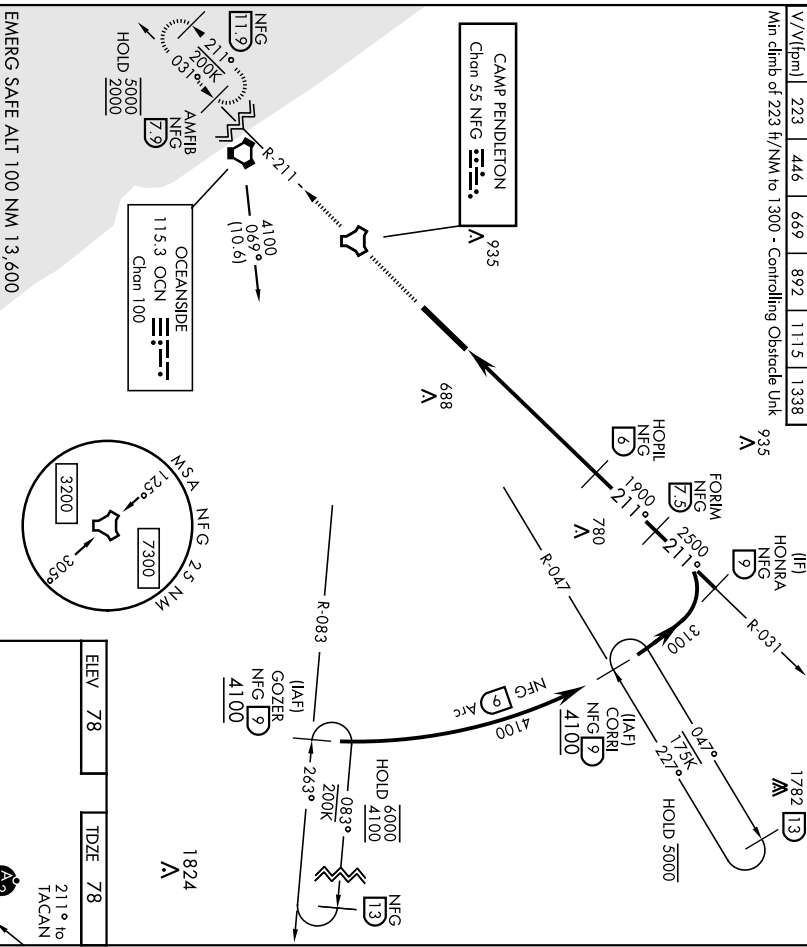
CAMP PENDLETON MCAS (MUNN FLD) (KNIFG)

▼ \* When ALS inop, increase vis to 1 mile.  
 Visibility reduction by Helicopters NA.

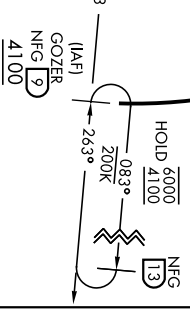
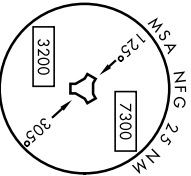
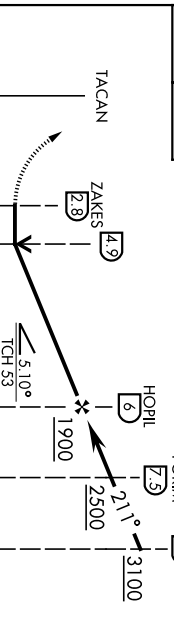


MISSED APPROACH: Climb to 2000 direct NFG TACAN then direct AMFIB and hold.

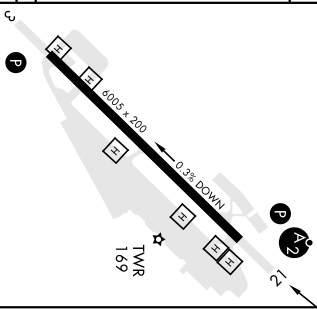
ATIS ★ <b>285.45</b>	SOCAL APP CON <b>127.3 323.0</b>	TOWER ★ <b>128.775 340.2</b>	GND CON <b>134.675 360.2</b>	CLNC DEL <b>134.675 271.6</b>	ASR/ PAR
Knots 60    120    180    240    300    360	V/I/fpm 223    446    669    892    1115    1338	Min climb of 223 ft/NM to 1300 - Controlling Obstacle Unk			



EMERG SAFE ALT 100 NM 13,600  
 2000 NFG AMFIB NFG (79)  
 VDA and VGSi not coincident.



CATEGORY	H-21 *	940- $\frac{3}{4}$	862	900- $\frac{3}{4}$	COPTER
CIRCLING		NOT AUTHORIZED			



OCEANSIDE, CALIFORNIA  
 33°18'N-117°21'W  
 CAMP PENDLETON MCAS (MUNN FLD) (KNIFG)  
 Amdt 5 02DEC21  
**COPTER TACAN RWY 21**

OCEANSIDE, CALIFORNIA

# RNAV (GPS) RWY 21

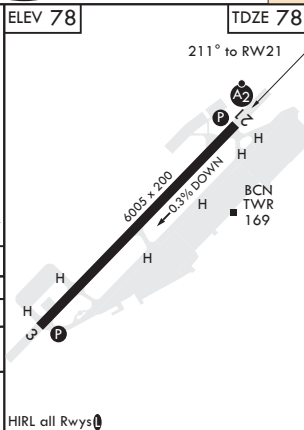
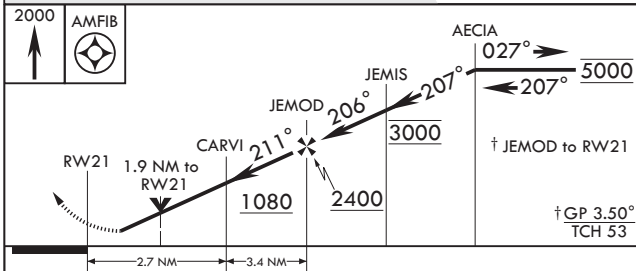
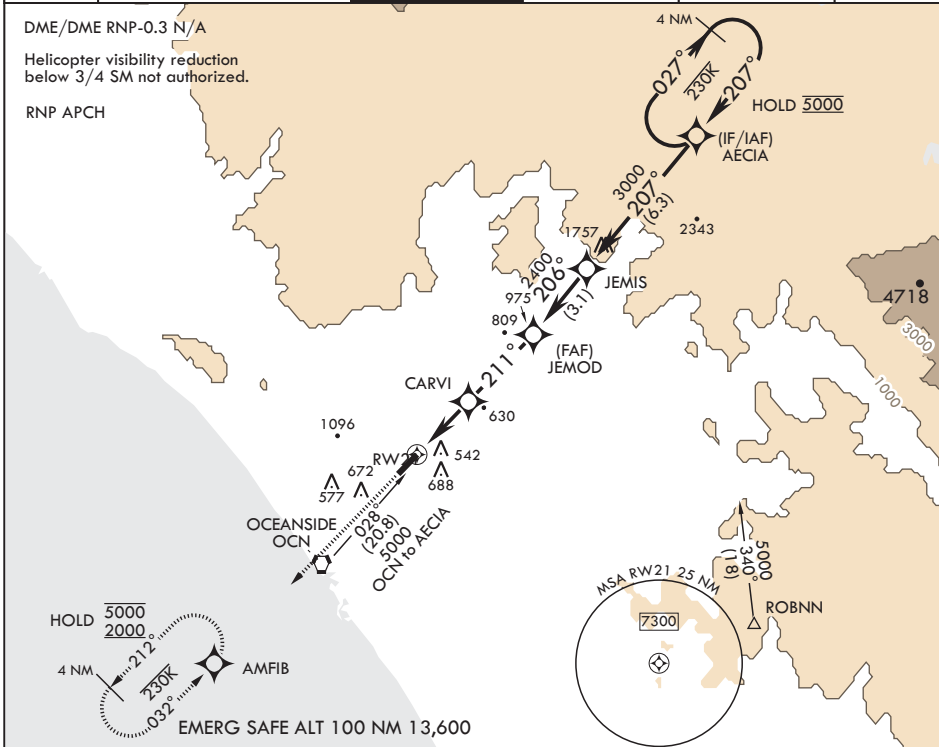
WAAS CH 91083 W21A	APCH CRS 211°	Rwy ldg TDZE Arprt Elev	6005 78 78
--------------------------	------------------	-------------------------------	------------------

AL-5985 (USN)

CAMP PENDLETON MCAS (MUNN FLD) (KNFG)

<p>▼ * When ALS inop, increase vis to 1 mile. ** When ALS inop, increase CAT A vis to 1 mile, CAT B vis to 1 1/4 miles, CAT CD vis to 2 1/2 miles. *** Circling Rwy 3 not authorized at night when VGSi inop.</p>	<p>SALS</p>	<p>MISSED APPROACH: Climb to 2000 direct AMFIB and hold.</p>
---	-------------	--

ATIS ★ 285.45	SOCAL APP CON/DEP CON 127.3 323.0	TOWER ★ 128.775 0 340.2	GND CON 134.675 360.2	CLNC DEL 134.675 271.6	ASR/PAR
------------------	--------------------------------------	----------------------------	--------------------------	---------------------------	---------



CATEGORY	A	B	C	D
LPV DA*	449-3/4 371 (400-3/4)			
LNAV MDA**	840-3/4 762 (800-3/4)	840-1 762 (800-1)	840-2 762	(800-2)
☐ CIRCLING***	1000-1 1/4 922 (1000-1 1/4)	1260-1 1/2 1182 (1200-1 1/2)	1500-3	1422 (1500-3)

OCEANSIDE, CALIFORNIA

33°18'N - 117°21'W CAMP PENDLETON MCAS (MUNN FLD) (KNFG)

Amdt 5 21APR22

# RNAV (GPS) RWY 21

SW-3, 22 FEB 2024 to 21 MAR 2024

SW-3, 22 FEB 2024 to 21 MAR 2024

# TACAN Rwy 3

VORTAC OCN	ARCH CRS	Rwy Idg	6005
115.3	026°	TDZE	67
Chan 100		Arpt Elev	78

AL-5985 [USN]

CAMP PENDELTON MCAS (MUNN FLD) (KNIFG)

Procedure not authorized at night when VGSi inop.  
 Visibility reduction by Helicopters NA.

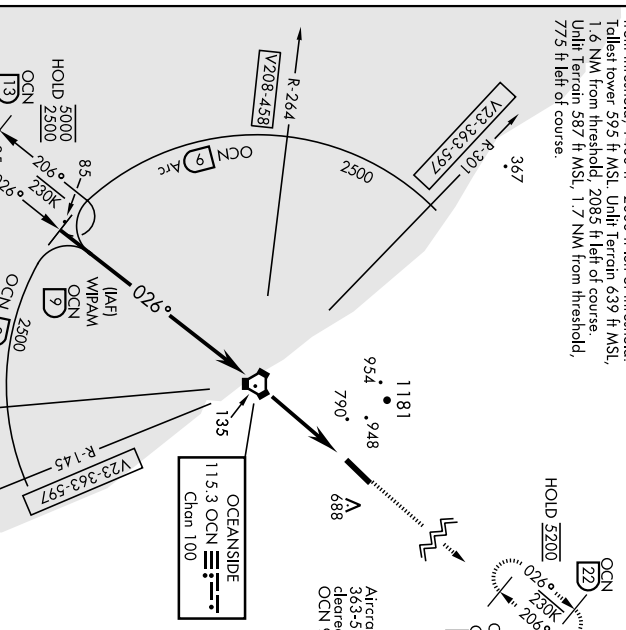
MISSED APPROACH: Climb to 5200 and intercept the  
 OCN VORTAC R-026 direct CUPIS and hold. Climb in hold.

ATIS ★	SOCAL APP CON	TOWER ★	GND CON	CLNC DEL	ASR/PAR
285.445	127.3 323.0	128.775 0 340.2	134.675 360.2	134.675 271.6	

CAUTION: High terrain on final approach.

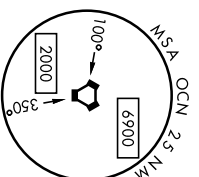
20.1 Penetrations: Unlit towers 1.5 NM - 1.7 NM from threshold, 1400 ft - 2000 ft left of threshold.  
 Tallest tower 595 ft MSL. Unlit Terrain 639 ft MSL, 1.6 NM from threshold, 2085 ft left of course.  
 Unlit Terrain 587 ft MSL, 1.7 NM from threshold, 775 ft left of course.

Min. climb of 275 ft/NM to 3500 - Controlling Obstacle 2778



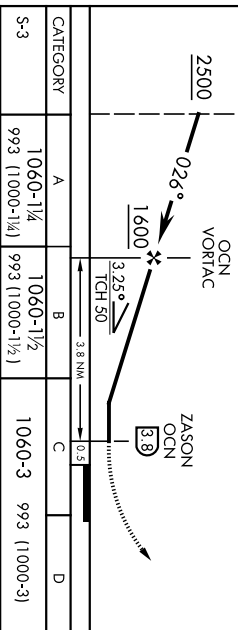
Aircraft inbound to OCN on V23-363-597, V1 65, V208-458 will be cleared to intercept and proceed via OCN 9 mile Arc to WIPAM at 2500 min.

## NOT FOR CIVIL USE

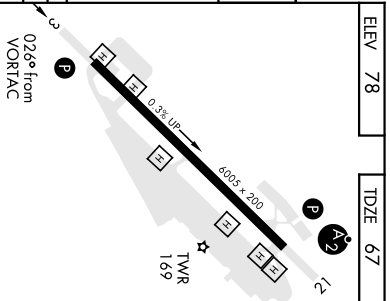


EMERG SAFE ALT 100 NM 13,600

WIPAM OCN 9	5200	CUPIS OCN 16
VGSi and descent angle not coincident (VGSi Angle 4.00/TCH 68).	OCN R-026	



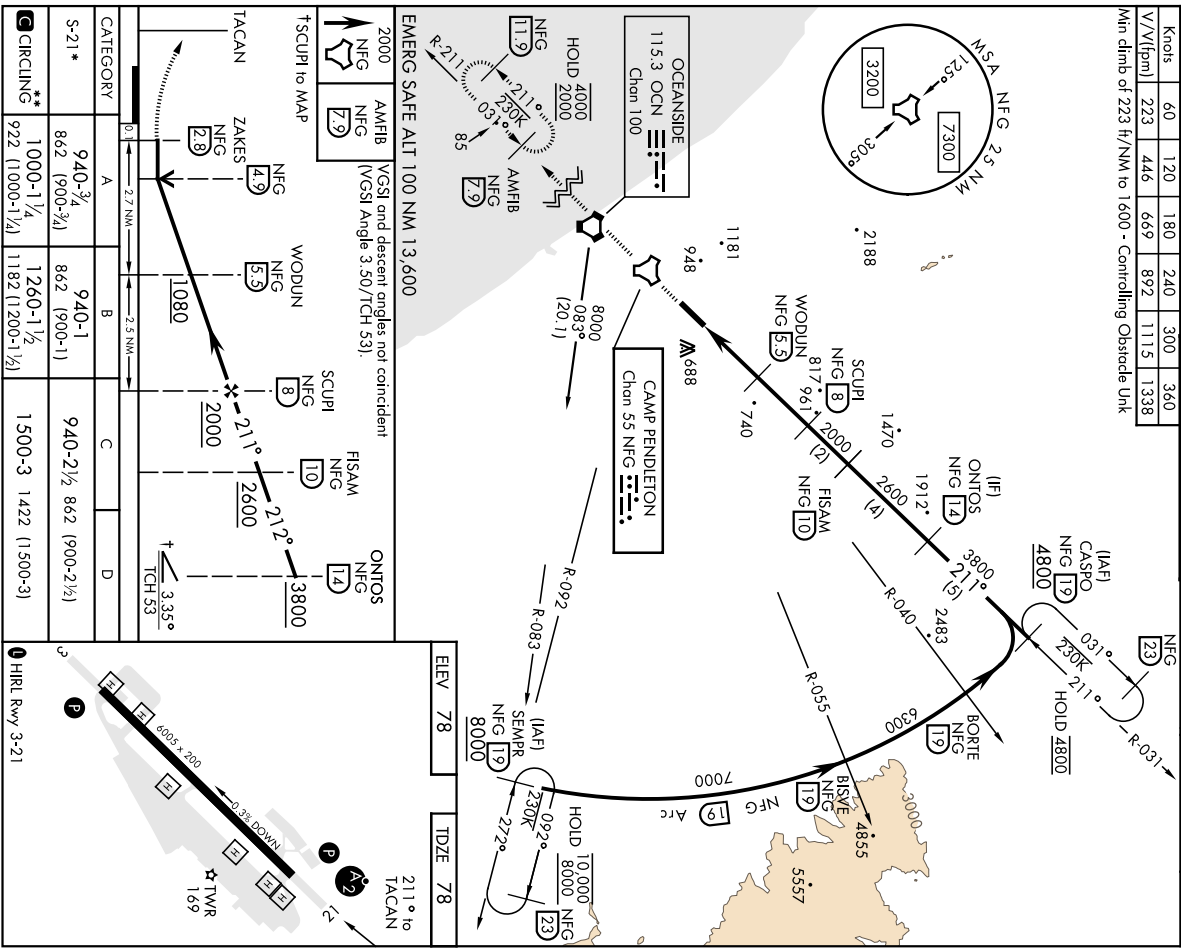
CATEGORY	A	B	C	D
S-3	1060-1 1/2 993 (1000-1 1/4)	1060-1 1/2 993 (1000-1 1/2)	1060-3 993 (1000-3)	
CIRCLING	1060-1 1/4 993 (1000-1 1/4)	1260-1 1/2 1182 (1200-1 1/4)	1500-3 1422 (1500-3)	



OCEANSIDE, CALIFORNIA 33° 18'N-117° 21'W CAMP PENDELTON MCAS (MUNN FLD) (KNIFG)  
 Arr'd 5 02DEC21 **TACAN Rwy 3**

TACAN NFG Chon 55	APCH CRS 21°	Rwy Idg 6005	AL-5985 (USN)	CAMP PENDLETON MCAS (MUNN FLD)	(KNIFG)
		TDZE 78			
		Appl Elev 78			
⚠️ When AIS Inop, increase CAT A vis to 1 mile, CAT B to 1/2 miles. *** Circling Rwy 3 not authorized at night when VGS1 inop. Visibility Reduction by Helicopters NA.			SAISF 		
MISSED APPROACH: Climb to 2000 direct NFG TACAN then direct AMFB and hold.					

ATIS *	SOCAL APP CON	TOWER *	GND CON	CINC DEL	ASR/PAR
285.45	127.3 323.0	128.775 340.2	134.675 360.2	134.675 271.6	
Knots	60 120 180 240 300 360				
V/W/fpm	223 446 669 892 1115 1338				
Min climb of 223 ft/NM to 1600 - Controlling Obstacle Unk					



2000 NFG AMFB (7.9) NFG AMFB (7.9) TSCUPI to MAP TACAN ZAKES NFG (4.9) NFG (2.8) WODUN NFG (5.5) SCUPI NFG (8) FISAM NFG (10) ONTOS NFG (14)	VGS1 and descent angles not coincident (VGS1 Angle 3.50/TCH 53) SCUPI NFG (8) FISAM NFG (10) ONTOS NFG (14)	211° to TACAN 211° to TACAN TWR 1.69
---	---	--

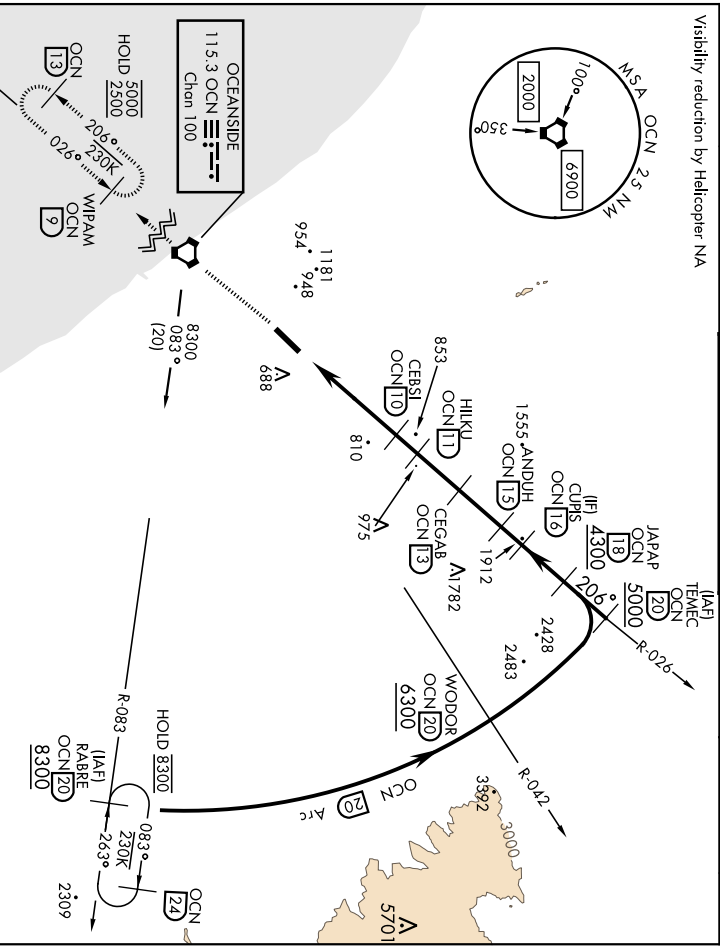
  

CATEGORY	A	B	C	D
S-21*	940-3/4 862 (900-2½)	940-1 862 (900-1)	940-2½ 862 (900-2½)	
CIRCLING**	1000-1½ 922 (1000-1½)	1260-1½ 1182 (1200-1½)	1500-3 1422 (1500-3)	

OCEANSIDE, CALIFORNIA  
 33° 18'N-117° 21' W CAMP PENDLETON MCAS (MUNN FLD) (KNIFG)  
 Amch 6 02DEC21  
**TACAN Z RWY 21**

# VOR/DME or TACAN Y Rwy 21

VORTAC OCN <b>Chan 100</b> 115.3	APCH CRS <b>206°</b>	Rwy Idg <b>78</b> TDZE Aspl Elev <b>78</b>	AL-5985 (USN)	CAMP PENDELTON MCAS (MUNN FLD)	(KNIFG)
ATIS * <b>285.45</b>	SOCAL APP CON <b>127.3 323.0</b>	TOWER * <b>128.775 340.2</b>	GND CON <b>134.675 360.2</b>	CING DEL <b>134.675 271.6</b>	ASR/PAR
* When ALS inop, increase CAT A vis to 1 1/2 miles, CAT B vis to 1 1/2 miles, CAT CD vis to 3 miles. ** Circling Rwy 3 not authorized at night when VGS1 inop.			SALSF MISSED APPROACH: Climb to 2500 direct OCN VORTAC then direct W/PAM and hold.		
Visibility reduction by Helicopter NA					



2500	W/PAM OCN	9	2300	W/PAM OCN	9
EMERG SAFE ALT 100 NM 13,600					
VGS1 and descent angle not coincident VGS1 Angle 3.50/TCH 53)					
VORTAC	CEVU (8)	CEBSI (10)	HILKU (11)	CEGAB (13)	ANDUH (15)
	2100	2700	3300	3600	
CATEGORY A B C D S-21 * 1140-1 1140-1 1140-1 1140-1 1062 (1100-1) 1062 (1100-1) 1062 (1100-1/4) 1062 (1100-2 1/2) CIRCLING ** 1140-1 1/2 1260-1 1/2 1500-3 1422 (1500-3) 1062 (1100-1/4) 1182 (1200-1 1/2)					
ELEV 78 TDZE 78 206° 4.7 NM from FAF 4 NM 3.34° 1800 2100 2700 3300 3600 R-206 85 R-026 85 R-042 206° 2309 230K 263° (IAF) RABRE OCN 20 8300 (IAF) HIRL Rwy 3-21 P					

OCEANSIDE, CALIFORNIA 33° 18'N-117° 21'W CAMP PENDELTON MCAS (MUNN FLD) (KNIFG)  
 Amth 5 02DEC21  
**VOR/DME or TACAN Y Rwy 21**