

LOC/DME I-KOA	APP CRS	Rwy Idg	11000
109.7	174°	TDZE	47
Chan 34		Apt Elev	47

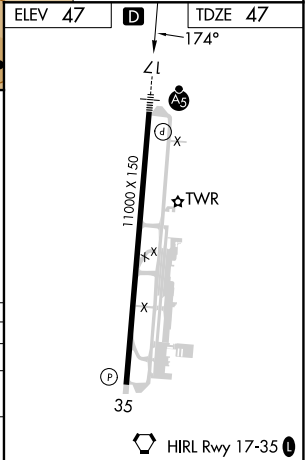
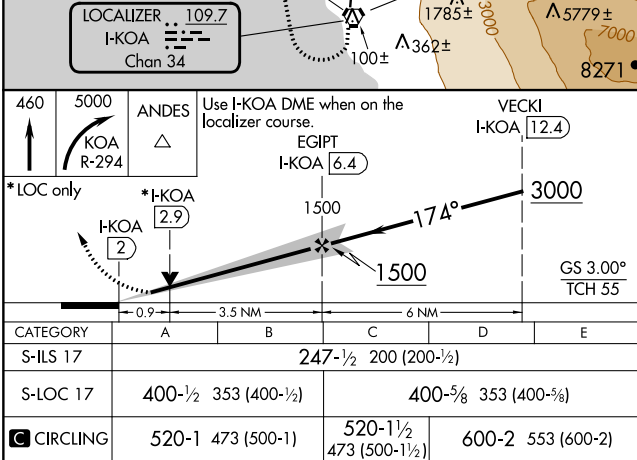
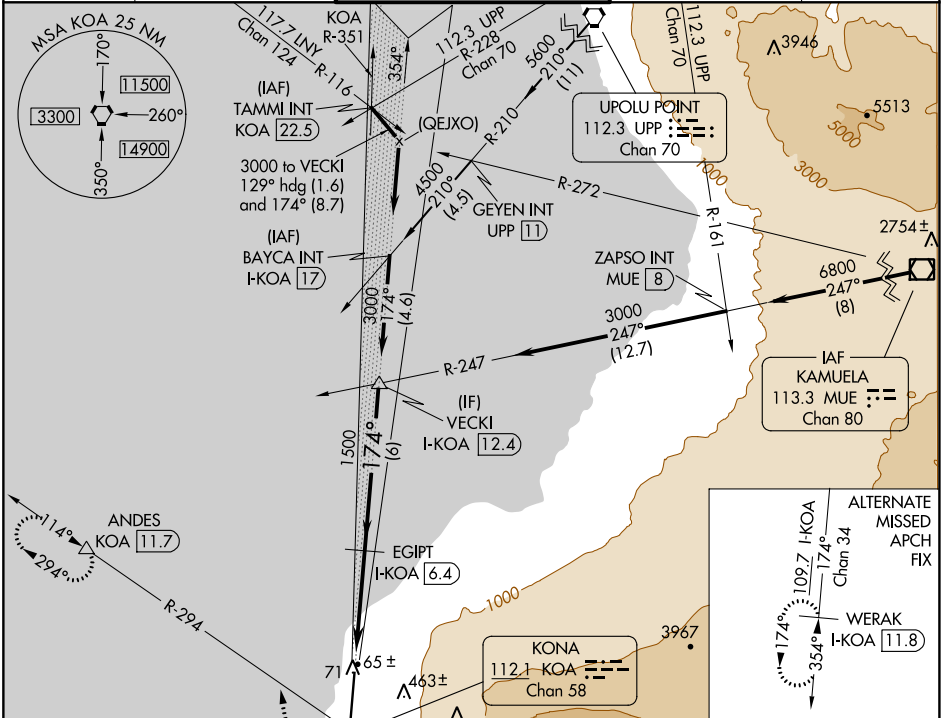
ILS or LOC RWY 17

ELLISON ONIZUKA KONA INTL AT KEAHOLE (KOA)(PHKO)

⚠ For inoperative MALSR, increase S-ILS 17 Cat E visibility to 3/4 mile and S-LOC 17 Cats C, D, E visibility to 1 mile. Circling NA east of Rwy 17-35. Autopilot coupled approach NA below 415. DME required.

MALSR  MISSED APPROACH: Climb to 460 then climbing right turn to 5000 on KOA VORTAC R-294 to ANDES/KOA VORTAC 11.7 DME and hold, continue climb-in-hold to 5000.

ATIS	HCF CENTER	KONA TOWER*	GND CON	CLNC DEL
127.4	118.45 278.3	120.3(CTAF) 254.3	121.9	118.6



PAC, 25 JAN 2024 to 21 MAR 2024

PAC, 25 JAN 2024 to 21 MAR 2024