

VOR/DME OLS 114.65 Chan 93 (Y)	APP CRS 136°	Rwy Idg TDZE Apt Elev N/A N/A 3955
--	------------------------	--

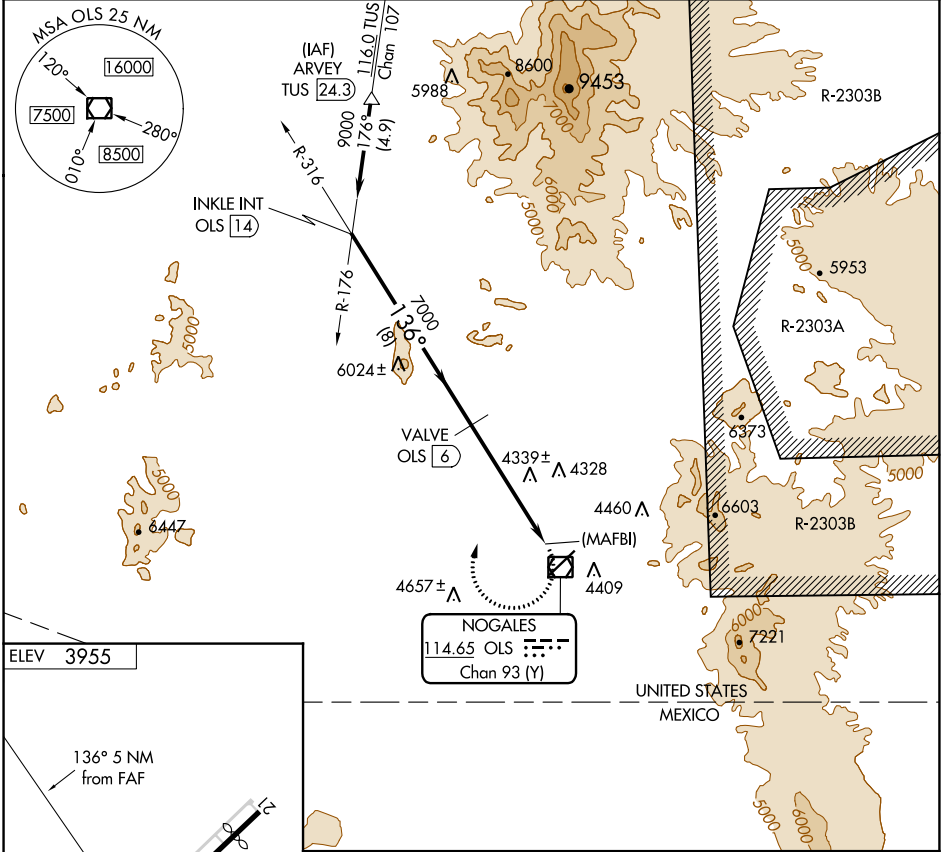
VOR/DME or GPS-B

NOGALES INTL (OLS)

▼ Night landing Rwy 21 NA.
▲ NA Helicopter visibility reduction below 1 SM not authorized.
 When local altimeter setting not received, procedure NA.

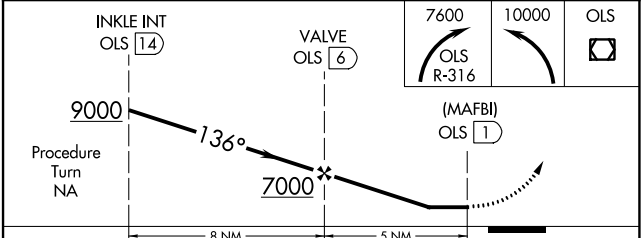
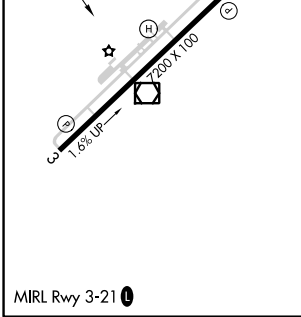
MISSED APPROACH: Climbing right turn to 7600 via OLS R-316 then climbing left turn to 10000 direct OLS VOR/DME.

ASOS 121.125	TUCSON APP CON 118.75 269.55	UNICOM 122.8 (CTAF)
------------------------	--	-------------------------------



SW-4, 22 FEB 2024 to 21 MAR 2024

SW-4, 22 FEB 2024 to 21 MAR 2024



CATEGORY	A	B	C	D
CIRCLING	5200-1¼ 1245 (1300-1¼)	5200-1½ 1245 (1300-1½)	5460-3 1505 (1600-3)	6860-3 2905 (3000-3)