

LOC/DME I-OTH 108.5 Chan 22	APP CRS 046°	Rwy Idg TDZE 16 Apt Elev 17	5320
---	------------------------	---	-------------

COPTER ILS or LOC RWY 5

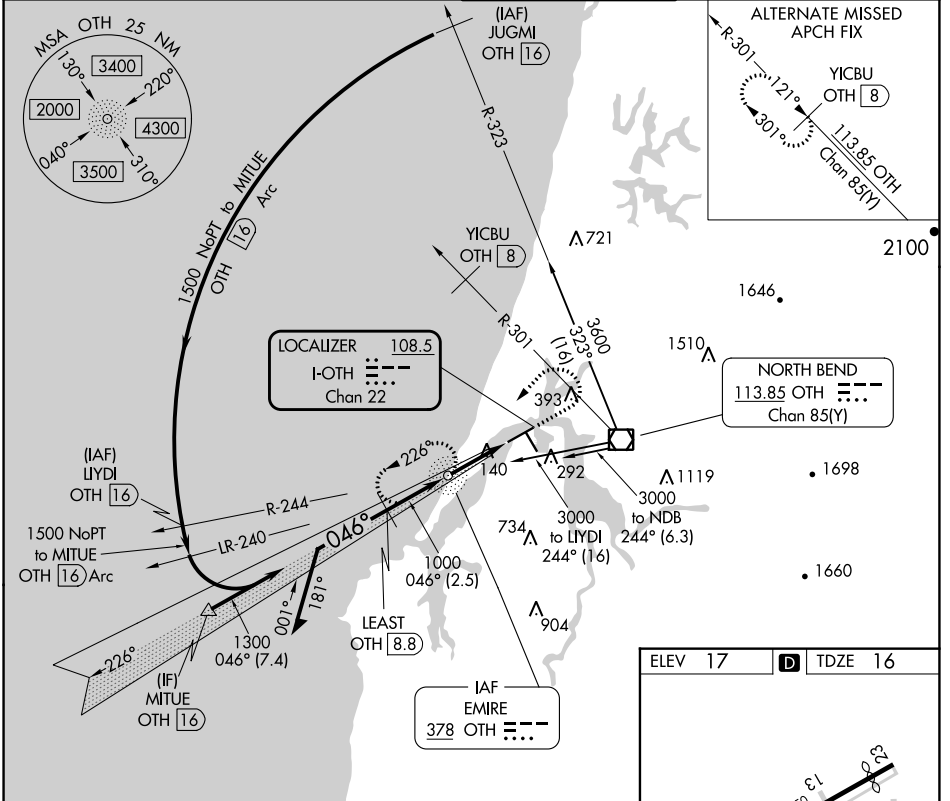
SOUTHWEST OREGON RGNL (OTH)

ADF and DME required.

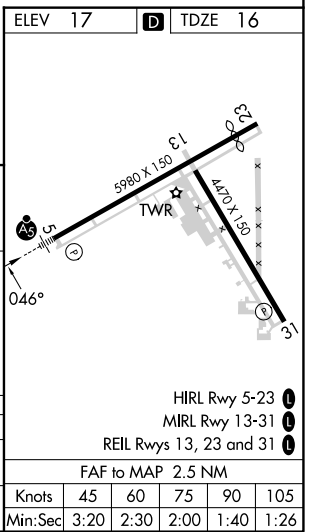
MALSRS

MISSED APPROACH: Climb to 600 then climbing left turn to 2100 direct OTH NDB and hold, continue climb-in-hold to 2100.

AWOS-3PT 135.075	SEATTLE CENTER 127.55 254.35	NORTH BEND TOWER* 118.45 (CTAF) 0	GND CON 127.1
----------------------------	--	---	-------------------------



Remain within 5 NM	OTH NDB	600	2100	OTH
2000	226°	↑		
1300	046°	↻		
1000		○		
GS 3.00° HCH 51	LEAST OTH 8.8	865		
		2.5 NM 2.5 NM		
CATEGORY	COPTER			
H-ILS 5	216-½	200	(200-½)	
H-LOC 5	400-½	384	(400-½)	



NW-1, 22 FEB 2024 to 21 MAR 2024

NW-1, 22 FEB 2024 to 21 MAR 2024

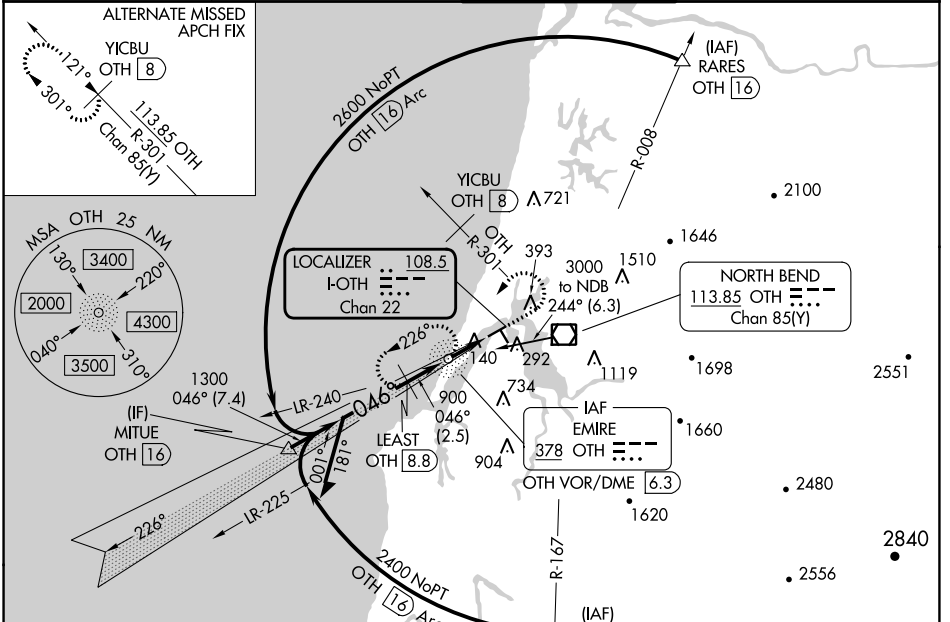
LOC/DME I-OTH 108.5 Chan 22	APP CRS 046°	Rwy Idg TDZE 16 Apt Elev 17	5320
---	------------------------	---	-------------

ILS or LOC RWY 5

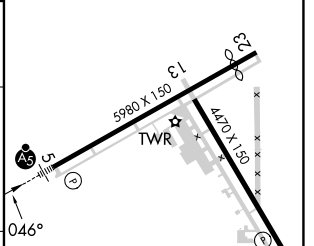
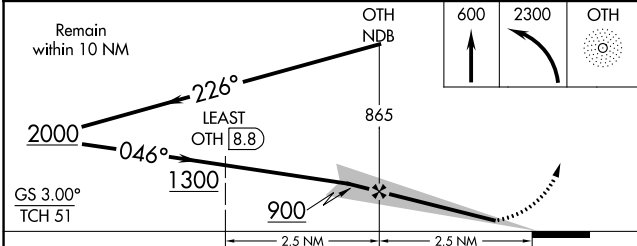
SOUTHWEST OREGON RGNL (OTH)

ADF and DME required.	MALSR	MISSED APPROACH: Climb to 600 then climbing left turn to 2300 direct OTH NDB and hold, continue climb-in-hold to 2300.
<p>⚠ Circling Rwy 13, 31 NA at night. For inop ALS, increase S-ILS 5 all</p> <p>⚠ Cats visibility to ¾ mile, S-LOC 5 Cat C/D visibility to 1 ½ mile.</p> <p>*Missed approach requires minimum climb of 248 feet per NM to 800.</p>		

AWOS-3PT 135.075	SEATTLE CENTER 127.55 254.35	NORTH BEND TOWER* 118.45 (CTAF) 0	GND CON 127.1
----------------------------	--	---	-------------------------



ELEV 17	TDZE 16
---------	---------



CATEGORY	A	B	C	D
S-ILS 5*		216-½	200 (200-½)	
S-ILS 5		278-½	262 (300-½)	
S-LOC 5	400-½	384 (400-½)	400-¾	384 (400-¾)
CIRCLING	680-1 663 (700-1)	820-1 803 (900-1)		NA

HIRL Rwy 5-23	1
MIRL Rwy 13-31	1
REIL Rwy 13, 23 and 31	1
FAF to MAP 2.5 NM	
Knots	60 90 120 150 180
Min:Sec	2:30 1:40 1:15 1:00 0:50

NW-1, 22 FEB 2024 to 21 MAR 2024

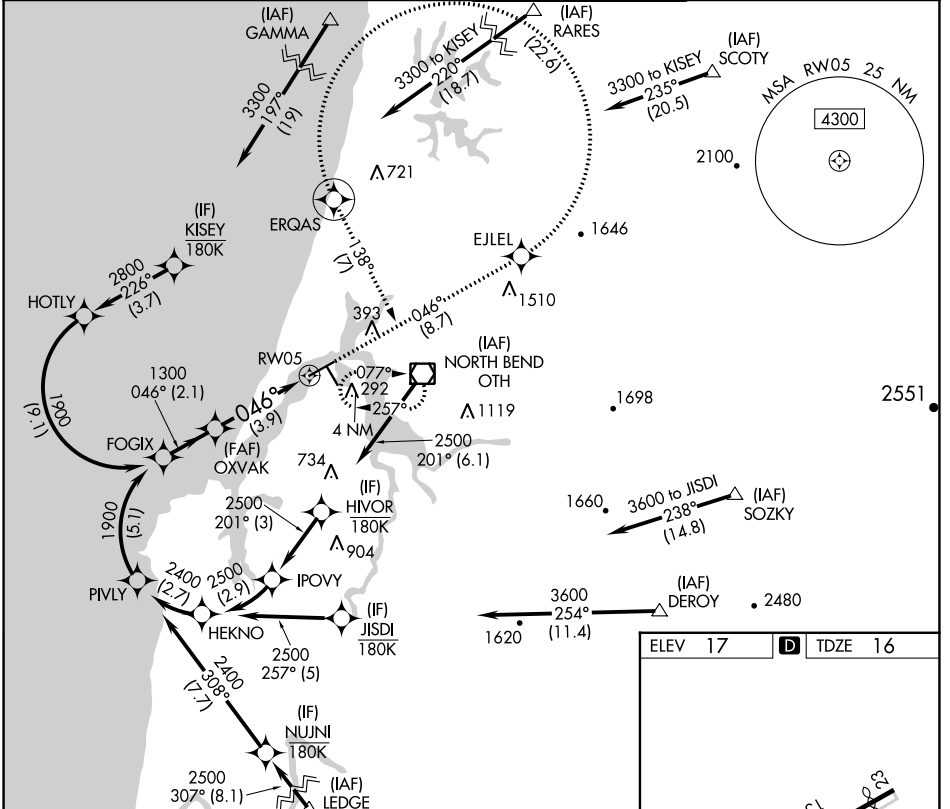
NW-1, 22 FEB 2024 to 21 MAR 2024

APP CRS	Rwy Idg	5320
046°	TDZE	16
	Apt Elev	17

RNAV (RNP) Z RWY 5

SOUTHWEST OREGON RGNL (OTH)

RNP AR APCH. RF required. For inop ALS, increase *RNP 0.11 all Cats visibility to 1 SM, #RNP 0.30 all Cats visibility to 1 1/8 SM, and RNP 0.30 all Cats visibility to 1 1/8 SM. For uncompensated Baro-VNAV systems, procedure NA below -2°C or above 54°C.		MALS R 	MISSED APPROACH: Climb to 3300 on track 046° to EJLEL, left turn to ERQAS, and on track 138° to OTH VOR/DME and hold. *Missed approach requires minimum climb of 400 feet per NM to 1200. #Missed approach requires minimum climb of 255 feet per NM to 2400.
AWOS-3PT	SEATTLE CENTER	NORTH BEND TOWER*	GND CON
135.075	127.55 254.35	118.45 (CTAF)	127.1



NW-1, 22 FEB 2024 to 21 MAR 2024

NW-1, 22 FEB 2024 to 21 MAR 2024

See planview for multiple IF locations.		3300	EJLEL	ERQAS	tr 138°	OTH
FOGIX	OXVAK	↑ tr 046°				
1900	1300			RW05		
GP 3.00°	1300					
TCH 51						
	2.1 NM		3.9 NM			
CATEGORY	A	B	C	D		
RNP 0.11 DA*		394-5/8	378 (400-3/8)			
RNP 0.30 DA#		477-1 1/8	461 (500-1 1/8)			
RNP 0.30 DA		569-1 3/8	553 (600-1 3/8)			

HIRL Rwy 5-23

MIRL Rwy 13-31

REIL Rwys 13, 23 and 31

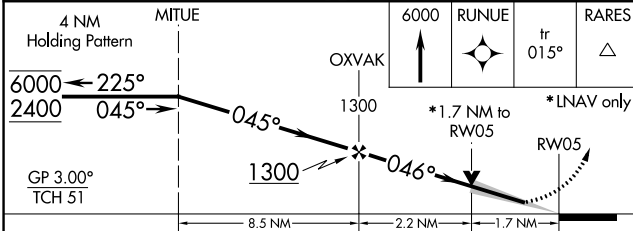
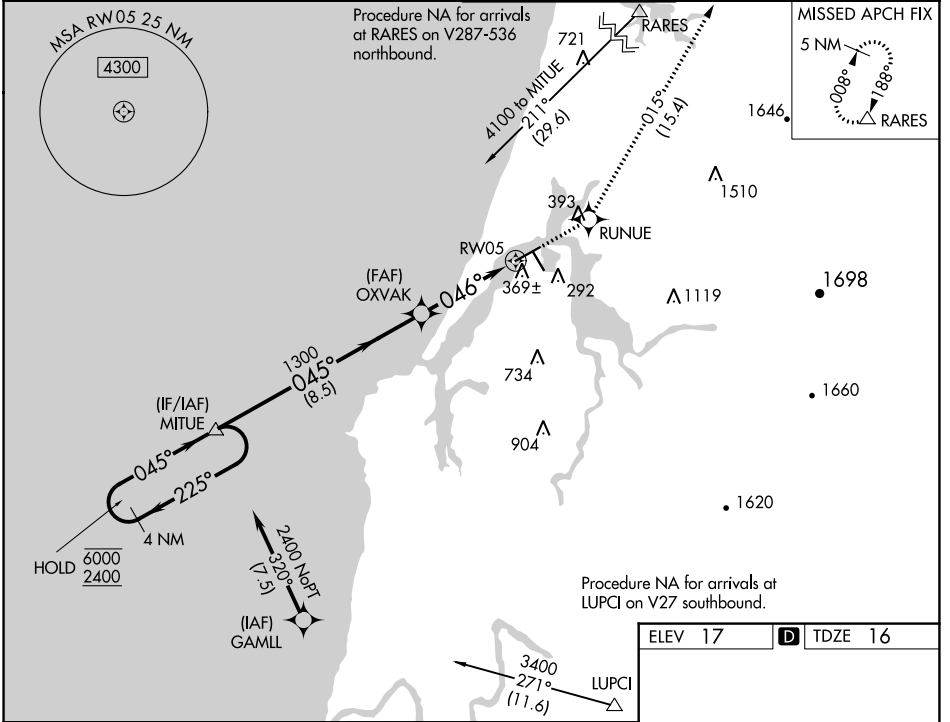
WAAS CH 82416	APP CRS 046°	Rwy Idg TDZE Apt Elev	5320 16 17
-------------------------	------------------------	-----------------------------	---------------------------------------

RNAV (GPS) Y RWY 5

SOUTHWEST OREGON RGNL (OTH)

RNP APCH. ▼ Circling Rwy 13, 31 NA at night. For uncompensated Baro-VNAV systems, LNAV/VNAV NA below -2°C or above 54°C. For inop ALS, increase LPV all Cats visibility to ½ SM, LNAV/VNAV all Cats visibility to 1½ SM, and increase LNAV Cat C/D visibility to 1¾ SM.	MALS R AS	MISSED APPROACH: Climb to 6000 direct RUNUE and on track 015° to RARES and hold, continue climb-in-hold to 6000.
--	--------------	--

AWOS-3PT 135.075	SEATTLE CENTER 127.55 254.35	NORTH BEND TOWER* 118.45 (CTAF)	GND CON 127.1
----------------------------	--	---	-------------------------



ELEV 17	TDZE 16
---------	---------

5980 X 150

427 X 150

TWR

RCLS

046° to RW05

RIL Rwy 5-23

MRL Rwy 13-31

REIL Rwys 13, 23 and 31

CATEGORY	A	B	C	D
LPV DA		319-½	303 (400-½)	
LNAV/VNAV DA		550-1¾	534 (600-1¾)	
LNAV MDA	620-½	604 (700-½)	620-1¾	604 (700-1¾)
CIRCLING	680-1 663 (700-1)	820-1 803 (900-1)	1100-3 1083 (1100-3)	1160-3 1143 (1200-3)

NW-1, 22 FEB 2024 to 21 MAR 2024

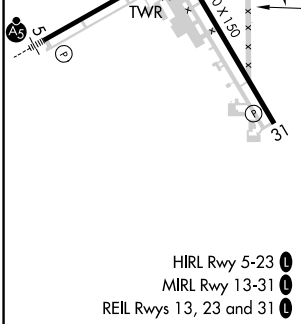
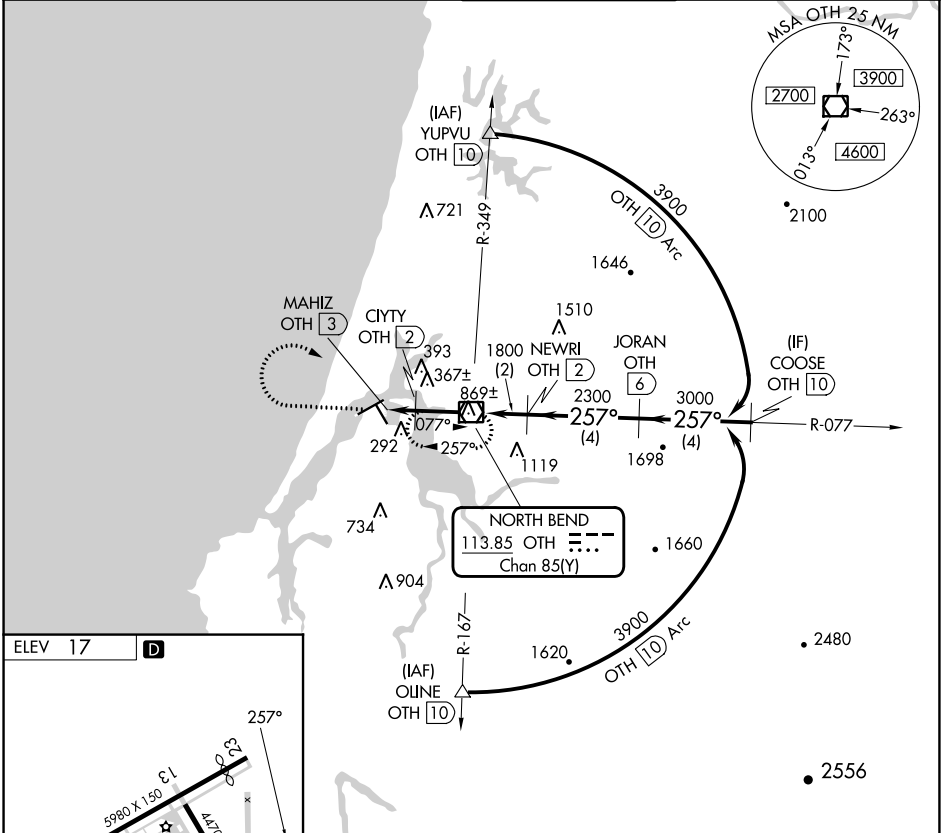
NW-1, 22 FEB 2024 to 21 MAR 2024

VOR/DME OTH 113.85 Chan 85(Y)	APP CRS 257°	Rwy Idg TDZE Apt Elev 17	N/A N/A 17
---	------------------------	--	---------------------------------------

VOR-B
SOUTHWEST OREGON RGNL (OTH)

DME required.	MISSED APPROACH: Climb to 2300 then climbing right turn to 3600 direct OTH VOR/DME and hold.
<p>▼ Circling Rwy 13, 31 NA at night. ▲ Rwy 13, 31 helicopter visibility reduction below 1 SM NA.</p>	

AWOS-3PT 135.075	SEATTLE CENTER 127.55 254.35	NORTH BEND TOWER* 118.45 (CTAF) 0	GND CON 127.1
----------------------------	--	---	-------------------------



2300	3600	OTH	JORAN OTH (6)	COOSE OTH (10)
NEWRI OTH (2)	3900			
CIYTY OTH (2)	OTH VOR/DME	3000		
MAHIZ OTH (3)	1800	2300		
1060				
1 NM	2 NM	2 NM	4 NM	4 NM
CATEGORY	A	B	C	D
☐ CIRCLING	700-1 683 (700-1)	820-1 803 (900-1)	1100-3 1083 (1100-3)	1180-3 1163 (1200-3)

NW-1, 22 FEB 2024 to 21 MAR 2024

NW-1, 22 FEB 2024 to 21 MAR 2024