

CAMARILLO SIX DEPARTURE
(CMA6.CMA) 15SEP16

CAMARILLO SIX DEPARTURE
(CMA6.CMA) 16Z59

SL-674 (FAA)

OXNARD (OXR)
OXNARD, CALIFORNIA

TAKEOFF MINIMUMS

Rwy 7: 2000-5 or Standard with minimum climb of 320' per NM to 4100.
Rwy 25: 2100-5 or Standard with a minimum climb of 300' per NM to 4100.

TAKEOFF OBSTACLE NOTES

Rwy 7: Tree 527' from DER, 501' left of centerline, 59' AGL/108' MSL.

NOTE: Aircraft proceeding on FILLMORE TRANSITION- If not at MCA/MEA prior to reaching FIM VORTAC, continue climbing in depicted holding pattern to MCA or assigned altitude.
NOTE: RADAR required.

**TOP ALTITUDE:
8000**

ATIS 118.05
GND CON 121.9
OXNARD TOWER ★ 134.95 (CTAF) 257.8
POINT MUGU DEP CON ★ 124.7 335.5
LOS ANGELES CENTER 135.5 327.1

FILLMORE
112.5 FIM ---
Chan 72
N34°21.40'-W118°52.88'
L-3-4-7, H-4

VAN NUYS
113.1 VNY ---
Chan 78

CAMARILLO
115.8 CMA ---
Chan 105
N34°12.75'-W119°05.66'

VENTURA
108.2 VTU ---
Chan 19
N34°06.90'-W119°02.97'
L-3-4-7, H-4

DEPARTURE ROUTE DESCRIPTION

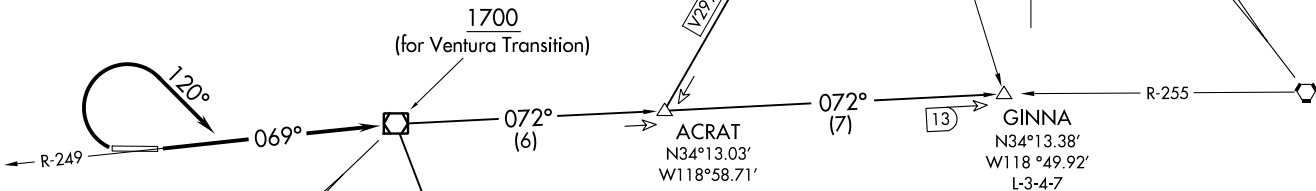
TAKEOFF RUNWAY 7: Climb to 8000 (or assigned altitude) on CMA R-249 to CMA VOR/DME, thence. . . .

TAKEOFF RUNWAY 25: Climbing right turn to 8000 (or assigned altitude) on heading 120° to intercept CMA R-249 to CMA VOR/DME, thence. . . . on (assigned route) or (transition).

FILLMORE TRANSITION (CMA6.FIM): From over CMA VOR/DME via CMA R-072 to ACRAT INT then via FIM R-195 to FIM VORTAC.

GINNA TRANSITION (CMA6.GINNA): From over CMA VOR/DME via CMA R-072 to GINNA INT.

VENTURA TRANSITION (CMA6.VTU): From over CMA VOR/DME via VTU R-324 to VTU VOR/DME.

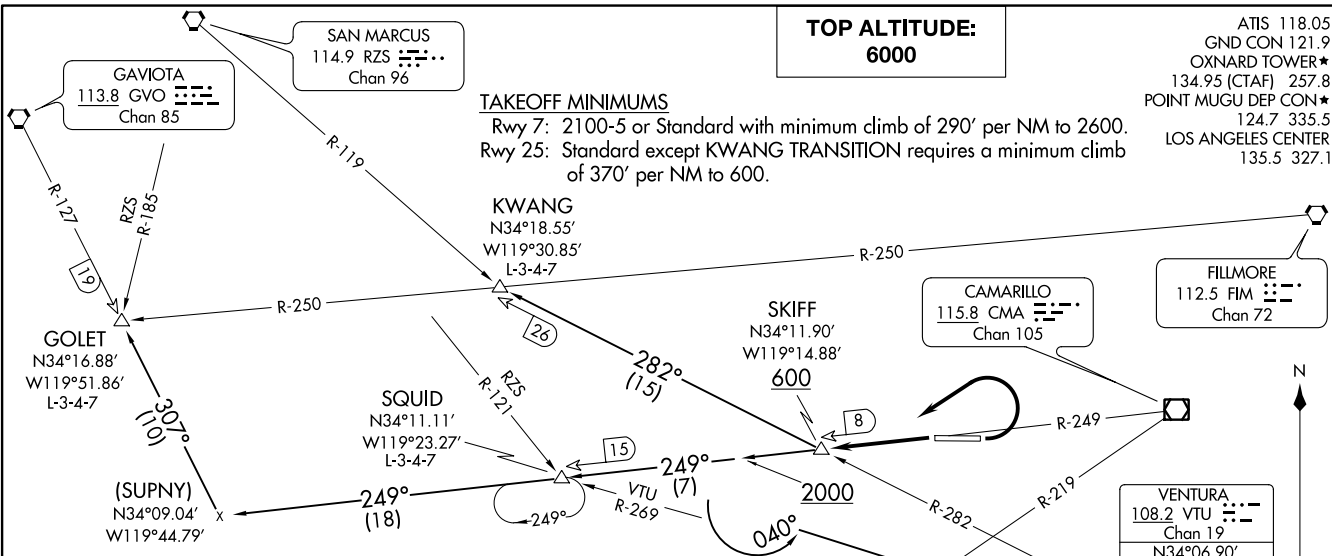


NOTE: Chart not to scale.

OXNARD, CALIFORNIA
OXNARD (OXR)

(SKIFF7.SKIFF) 13SEP16

SKIFF SEVEN DEPARTURE



TOP ALTITUDE:
6000

ATIS 118.05
GND CON 121.9
OXNARD TOWER★
134.95 (CTAF) 257.8
POINT MUGU DEP CON★
124.7 335.5
LOS ANGELES CENTER
135.5 327.1

TAKEOFF MINIMUMS
Rwy 7: 2100-5 or Standard with minimum climb of 290' per NM to 2600.
Rwy 25: Standard except KWANG TRANSITION requires a minimum climb of 370' per NM to 600.

(SKIFF7.SKIFF) 22111

AL-674 (FAA)

OXNARD (OXR)
OXNARD, CALIFORNIA

DEPARTURE ROUTE DESCRIPTION

TAKEOFF RUNWAY 7: Climbing left turn to 6000 (or assigned altitude) to intercept CMA R-249 westbound to SKIFF INT

TAKEOFF RUNWAY 25: Climb to 6000 (or assigned altitude) on CMA R-249 to cross SKIFF INT at or above 600
. . . . thence on (transition) or (assigned route).

GOLET TRANSITION (SKIFF7.GOLET): From over SKIFF INT via CMA R-249 to (SUPNY), then via GVO R-127 to GOLET INT.

KWANG TRANSITION (SKIFF7.KWANG): From over SKIFF INT via VTU R-282 to KWANG INT.

SQUID TRANSITION (SKIFF7.SQUID): From over SKIFF INT via CMA R-249 to SQUID INT.

VENTURA TRANSITION (SKIFF7.VTU): From over SKIFF INT via CMA R-249 to 2000, then turn left heading 040° to intercept VTU R-270 to VTU VOR/DME.

TAKEOFF OBSTACLE NOTES
Rwy 7: Tree 527' from DER, 501' left of centerline, 59' AGL/108' MSL.
NOTE: Chart not to scale.

OXNARD, CALIFORNIA
OXNARD (OXR)