

WAAS CH <b>62830</b> <b>W14A</b>	APP CRS <b>137°</b>	Rwy Idg TDZE Apt Elev	<b>6236</b> <b>2608</b> <b>2613</b>
--	------------------------	-----------------------------	---

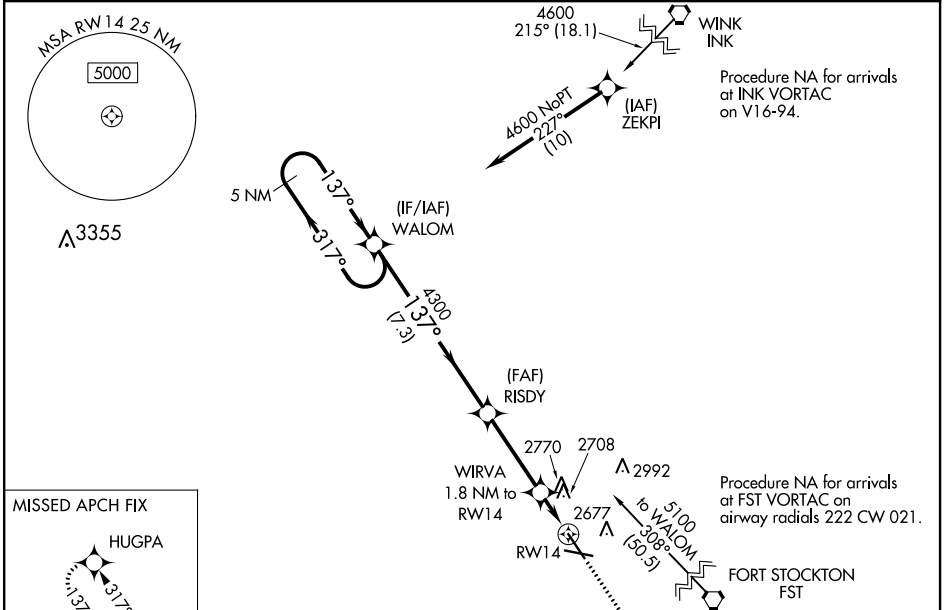
# RNAV (GPS) RWY 14

PECOS MUNI (PEQ)

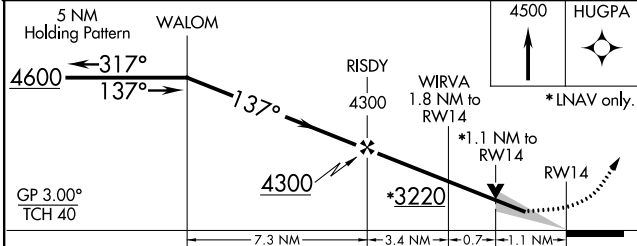
**⚠** For uncompensated Baro-VNAV systems, LNAV/VNAV NA below -20°C (-4°F) or above 27°C (80°F).  
**⚠** DME/DME RNP-0.3 NA. VDP and Baro-VNAV NA with Wink altimeter setting. When local altimeter setting not received, use Wink altimeter setting and increase all DA 95 feet and all MDA 100 feet, increase LPV all Cats visibility ¼ mile, LNAV/VNAV all Cats visibility ⅓ mile, LNAV Cat C/D and Circling Cat C visibility ¼ mile. Circling to Rwy 9/27 NA at night.

**MISSED APPROACH:**  
Climb to 4500 direct HUGPA and hold.

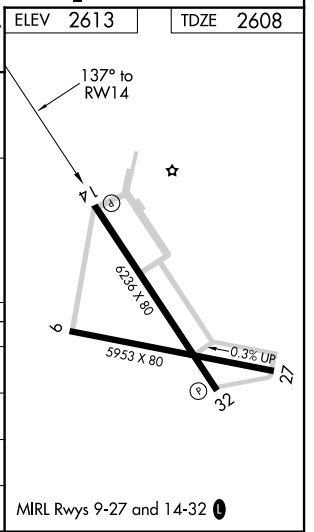
AWOS-3 <b>118.175</b>	ALBUQUERQUE CENTER <b>135.875 292.15</b>	UNICOM <b>122.8 (CTAF) 0</b>
--------------------------	---	---------------------------------



ELEV	2613	TDZE	2608
------	------	------	------



CATEGORY	A	B	C	D
LPV DA		2808-¾	200 (200-¾)	
LNAV/VNAV DA		2900-1	292 (300-1)	
LNAV MDA	3000-1	392 (400-1)	3000-1½	392 (400-1½)
CIRCLING	3080-1	467 (500-1)	3120-1½	3180-2
			507 (600-1½)	567 (600-2)



MIRL Rwy 9-27 and 14-32 0

WAAS CH <b>69629</b> <b>W32A</b>	APP CRS <b>317°</b>	Rwy Idg TDZE Apt Elev	<b>6236</b> <b>2605</b> <b>2613</b>
--	------------------------	-----------------------------	---

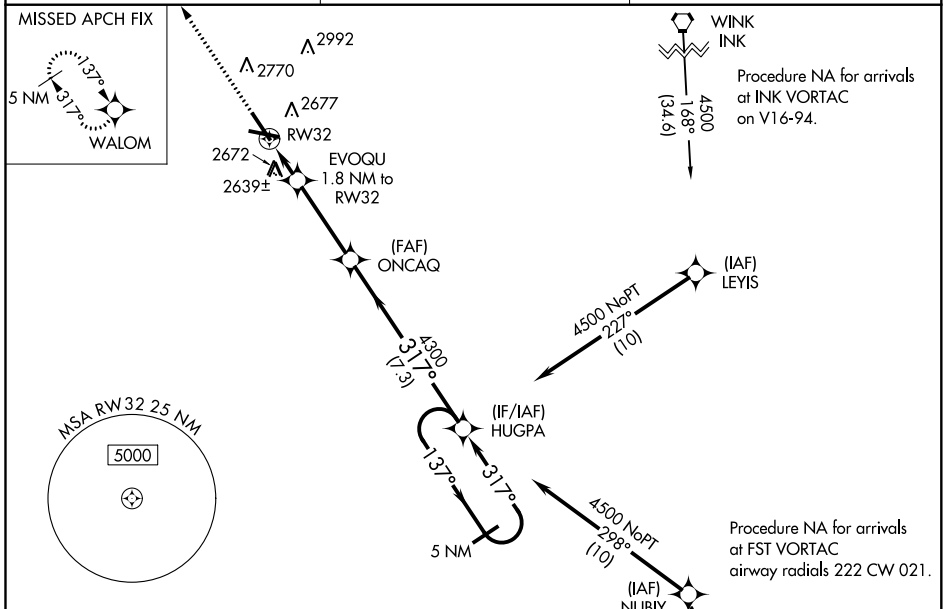
# RNAV (GPS) RWY 32

PECOS MUNI (P.E.Q)

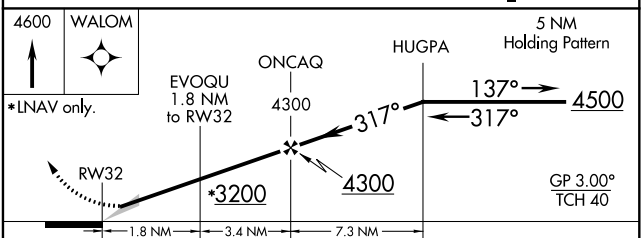
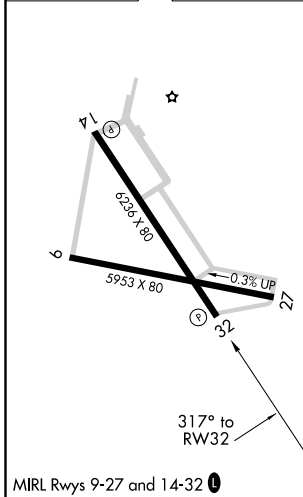
⚠ For uncompensated Baro-VNAV systems, procedure NA below -20°C (-4°F) or above 27°C (80°F).  
 ⚠ DME/DME RNP-0.3 NA. When local altimeter setting not received, use Wink altimeter setting: increase LPV DA to 2900 feet, LNAV/VNAV DA to 2950 feet and all visibilities ½ SM; increase all MDA 100 feet and visibility Cat C and LNAV Cat D ¼ SM. Baro-VNAV NA when using Wink altimeter setting.  
 Circling Rwy 9, 27 NA at night.

MISSED APPROACH:  
 Climb to 4600 direct  
 WALOM and hold.

AWOS-3 <b>118.175</b>	ALBUQUERQUE CENTER <b>135.875 292.15</b>	UNICOM <b>122.8</b> (CTAF) <b>①</b>
--------------------------	---	--



ELEV 2613	TDZE 2605
-----------	-----------



CATEGORY	A	B	C	D
LPV DA		2805-¾	200 (200-¾)	
LNAV/VNAV DA		2855-⅞	250 (300-⅞)	
LNAV MDA		2940-1	335 (400-1)	
CIRCLING	3020-1 407 (500-1)	3080-1 467 (500-1)	3120-1½ 507 (600-1½)	3180-2 567 (600-2)

SC-3, 22 APR 2021 to 20 MAY 2021

SC-3, 22 APR 2021 to 20 MAY 2021