

WAAS CH 58326 W11A	APP CRS 110°	Rwy Idg TDZE Apt Elev	8900 7096 7096
--	------------------------	-----------------------------	---

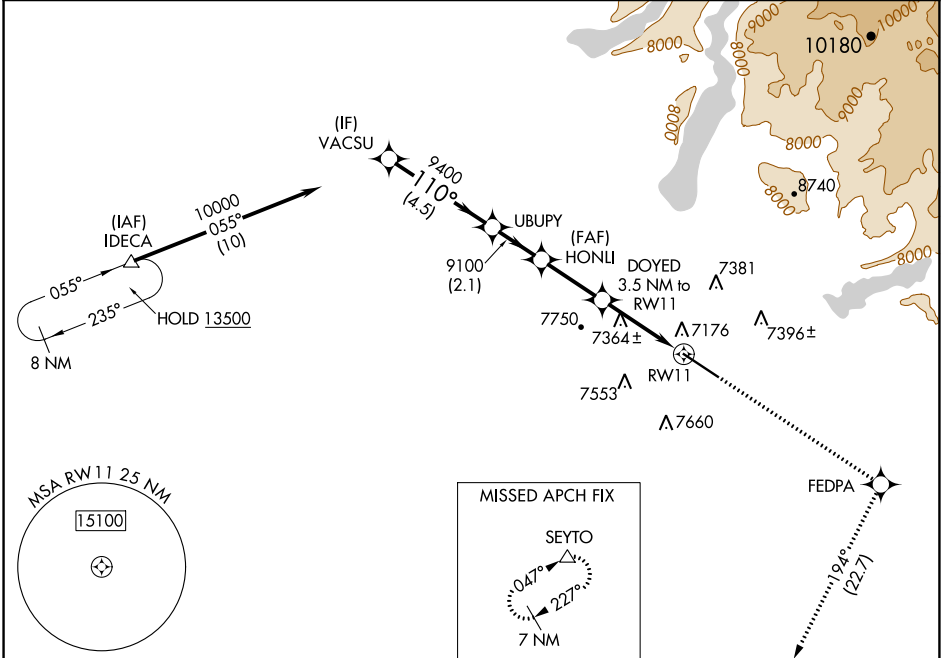
RNAV (GPS) RWY 11

RALPH WENZ FLD (PNA)

▼ Baro-VNAV NA. When local altimeter setting not received, use Big Piney altimeter setting and increase LPV DA to 7404 feet and all visibilities ¼ SM; increase LNAV/VNAV DA to 7413 feet and all visibilities ¼ SM; increase all MDA 60 feet and LNAV Cat C/D visibility ¼ SM. Circling NA south of Rwy 11/29. DME/DME RNP-0.3 NA. VDP NA with Big Piney altimeter setting.

ODALS MISSED APPROACH: Climb to 10000 direct FEDPA and on track 194° to SEYTO and hold.

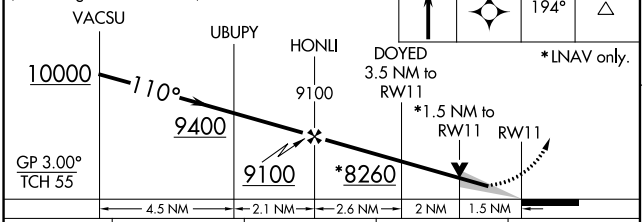
AWOS-3 118.325	SALT LAKE CENTER 128.35 239.25	UNICOM 122.8 (CTAF)
--------------------------	--	-------------------------------



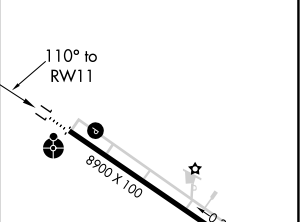
NW-1, 22 FEB 2024 to 21 MAR 2024

NW-1, 22 FEB 2024 to 21 MAR 2024

VGSI and RNAV glidepath not coincident (VGSI Angle 2.83/TCH 40).



ELEV 7096	TDZE 7096
-----------	-----------



CATEGORY	A	B	C	D
LPV DA		7346-¾	250 (300-¾)	
LNAV/VNAV DA		7355-¾	259 (300-¾)	
LNAV MDA	7620-1	524 (600-1)	7620-1½	524 (600-1½)
CIRCLING	7640-1	544 (600-1)	7840-2¼ 744 (800-2¼)	7980-3 884 (900-3)

MRL Rwy 11-29
REL Rwys 11 and 29

WAAS CH 40426 W29A	APP CRS 291°	Rwy ldg TDZE Apt Elev	8900 7078 7096
--	------------------------	-----------------------------	---

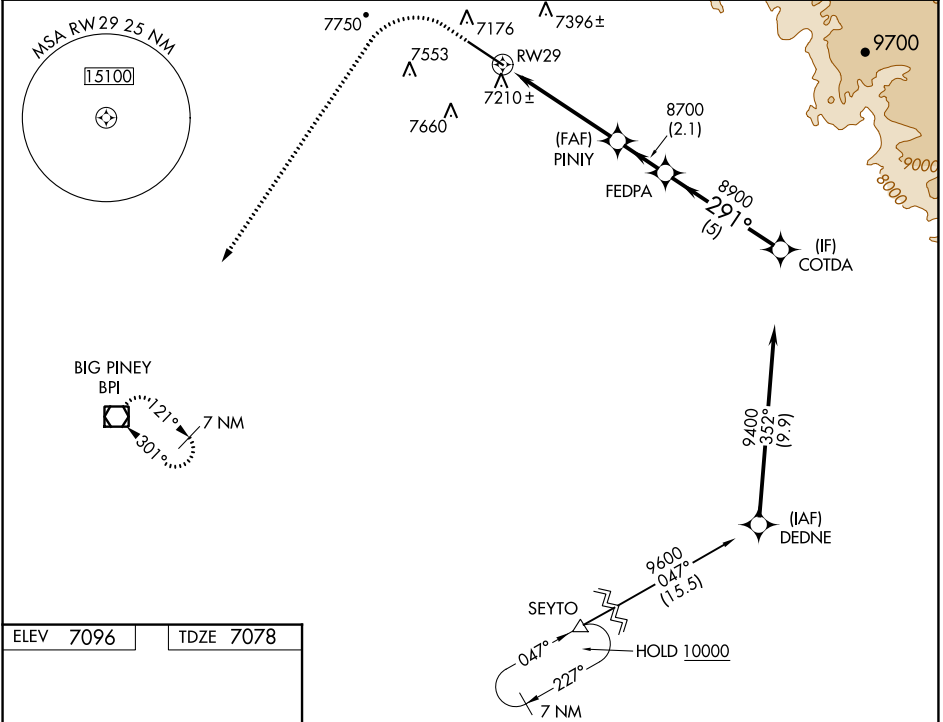
RNAV (GPS) RWY 29

RALPH WENZ FLD (PNA)

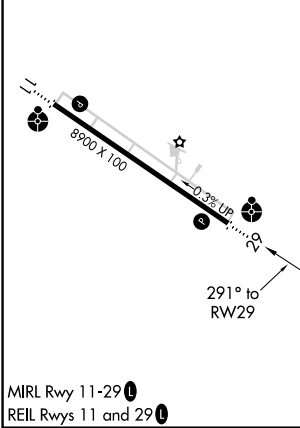
⚠ Baro-VNAV NA. When local altimeter setting not received, use Big Piney altimeter setting and increase LPV DA to 7386 feet and all visibilities ¼ SM; increase LNAV/VNAV DA to 7664 feet and all visibilities ½ SM; increase all MDA 60 feet and LNAV Cots C/D visibility ¼ SM. Circling NA south of Rwy 11/29. DME/DME RNP-0.3 NA. Helicopter visibility reduction below ¾ SM NA. VDP NA with Big Piney altimeter setting.

ODALS MISSED APPROACH: Climb to 7600 then climbing left turn to 10000 direct BPI VOR/DME and hold.

AWOS-3 118.325	SALT LAKE CENTER 128.35 239.25	UNICOM 122.8 (CTAF)
--------------------------	--	-------------------------------



ELEV 7096	TDZE 7078
-----------	-----------



7600	10000	BPI	VGSI and RNAV glidepath not coincident (VGSI Angle 2.83/TCH 40).	COTDA
*LNAV only.	*1.5 NM to RW29	PINIY	FEDPA	9400
		8700	8900	9400
RW29				GP 3.00°
				TCH 55
	1.5 NM	3.5 NM	2.1 NM	5 NM
CATEGORY	A	B	C	D
LPV DA	7328-¾ 250 (300-¾)			
LNAV/VNAV DA	7606-1¾ 528 (600-1¾)			
LNAV MDA	7600-1	522 (600-1)	7600-1½	522 (600-1½)
CIRCLING	7640-1	544 (600-1)	7840-2¼	7980-3
			744 (800-2¼)	884 (900-3)

NW-1, 22 FEB 2024 to 21 MAR 2024

NW-1, 22 FEB 2024 to 21 MAR 2024