

DUCXS FIVE ARRIVAL (RNAV)

POTOMAC APP CON
126.75 307.2
ATIS
119.15 263.025

- NOTE: RADAR required.
- NOTE: RNAV 1.
- NOTE: DME/DME/IRU or GPS required.
- NOTE: Turbojet and turboprop aircraft only.
- NOTE: "Maintain last ATC assigned altitude until cleared to descend via the DUCXS STAR."



4000
*1800
009°
(8)

THINA
Landing North Rws 2, 34:
Expect RADAR vectors to final
approach course prior to THINA.

6000
*2400
066°
(15)

6 NM



KELCE
11000 250K

6000
*1700
009°
(12)

PULDY

6000
*1800
041°
(11)

NEAVL
11000 250K



6 NM

NOTE: Chart not to scale.

ARRIVAL ROUTE DESCRIPTION

KELCE TRANSITION (KELCE.DUCXS5):
NEAVL TRANSITION (NEAVL.DUCXS5):

From THINA on track 009° to cross DUCXS at 4000, then on heading 041° or as assigned by ATC. Expect RADAR vectors to final approach course.

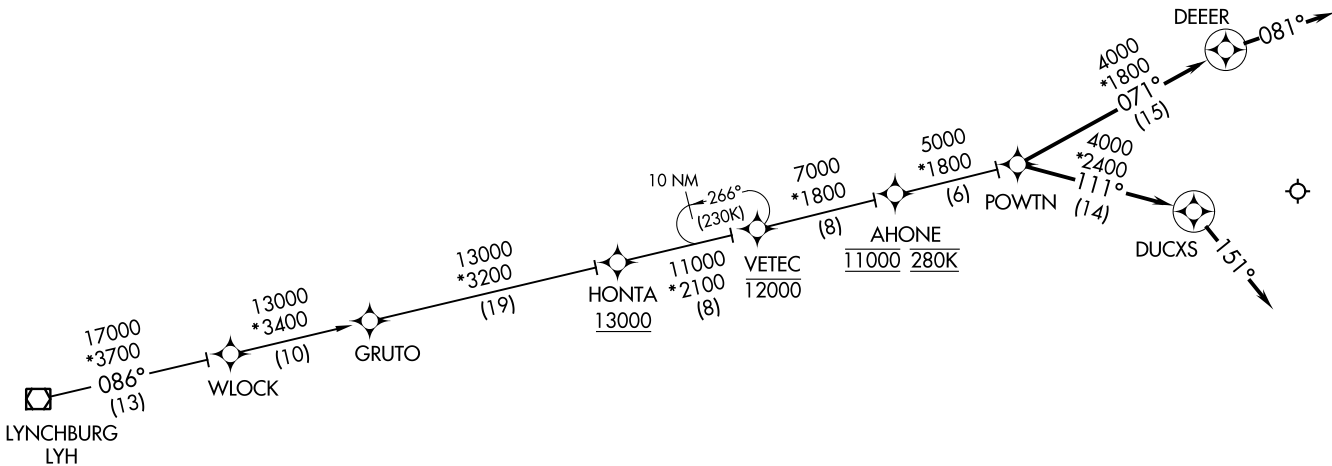
POTOMAC APP CON
126.75 307.2
ATIS
119.15 263.025

POWTN FIVE ARRIVAL (RNAV)
(POWTN.POWTN5) 10SEP20

(POWTN.POWTN5) 20254
POWTN FIVE ARRIVAL (RNAV)

AL-347 (FAA)

RICHMOND INTL (RIC)
RICHMOND, VIRGINIA



- NOTE: RADAR required.
 NOTE: RNAV 1.
 NOTE: DME/DME/IRU or GPS required.
 NOTE: Turbojet aircraft only.
 NOTE: Maintain last ATC assigned altitude until cleared to "descend via the POWTN STAR".
 ARTCC will issue landing direction assignment (north or south) and Potomac TRACON will issue runway assignments.



NOTE: Chart not to scale.

ARRIVAL ROUTE DESCRIPTION

LYNCHBURG TRANSITION (LYH.POWTN5)

LANDING NORTH RUNWAYS 2, 34: From POWTN on track 111° to DUCXS, then on heading 151° or as assigned by ATC. Expect RADAR vectors to final approach course.

LANDING SOUTH RUNWAYS 16, 20: From POWTN on track 071° to DEEER, then on heading 081° or as assigned by ATC. Expect RADAR vectors to final approach course.

RICHMOND, VIRGINIA
RICHMOND INTL (RIC)

POTOMAC APP CON
126.75 307.2
ATIS
119.15 263.025

MONTEBELLO

MOL
FL210

15000
*6200
115°
(16)

ZUMAT

13000
*4500
(14)

DXOON

13000
*2800
(13)

REDNG

13000
*1800
(6)

10 NM

294°
(230K)

HEMME

12000
11000
280K
11000

8000

*1700
112°
(12)

SPIDR

8000

4000

*1600
105°
(9)

DEEER

081°

DUCXS

4000
*2600
149°
(14)
151°



NOTE: RADAR required.
NOTE: RNAV 1.
NOTE: DME/DME/IRU or GPS required.
NOTE: Turbojet aircraft only.
NOTE: Maintain last ATC assigned altitude until cleared to "descend via the SPIDR STAR".
ARTCC will issue landing direction assignment (north or south) and Potomac TRACON will issue runway assignments.

ARRIVAL ROUTE DESCRIPTION

MONTEBELLO TRANSITION (MOL.SPIDR4)

LANDING NORTH RWYS 2, 34: From SPIDR on track 149° to DUCXS, then on heading 151° or as assigned by ATC. Expect RADAR vectors to final approach course.

LANDING SOUTH RWYS 16, 20: From SPIDR on track 105° to DEEER, then on heading 081° or as assigned by ATC. Expect RADAR vectors to final approach course.

NOTE: Chart not to scale.

SPIDR FOUR ARRIVAL (RNAV)
(SPIDR.SPIDR4) 10SEF20

RICHMOND, VIRGINIA
RICHMOND INTL (RIC)

(SPIDR.SPIDR4) 20254
SPIDR FOUR ARRIVAL (RNAV)

AL-347 (FAA)

RICHMOND INTL (RIC)
RICHMOND, VIRGINIA