

WAAS CH 61126 W22A	APP CRS 224°	Rwy Idg TDZE Apt Elev	5000 1662 1664
----------------------------------------	------------------------	-----------------------------	-------------------------------------------

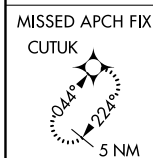
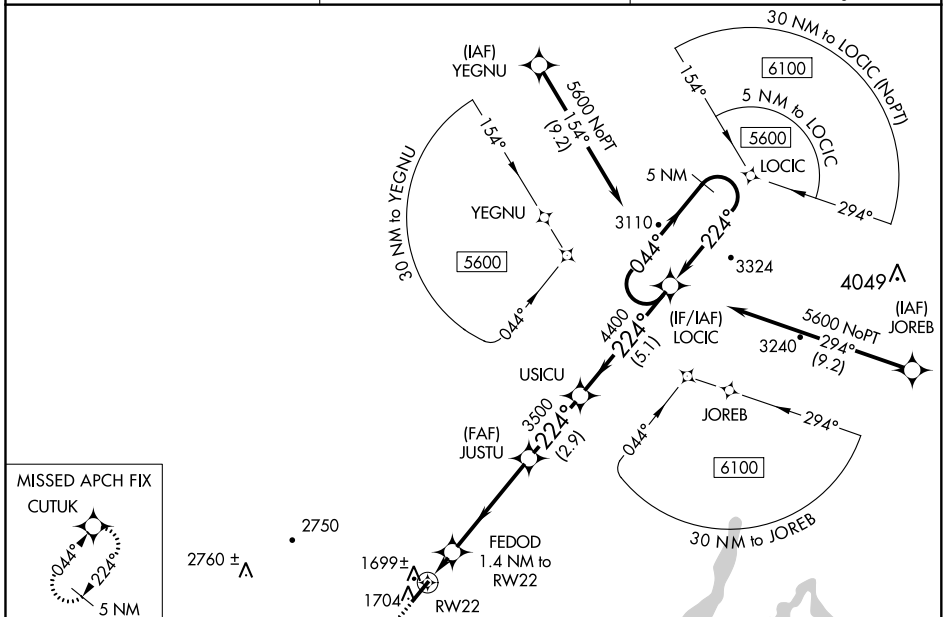
RNAV (GPS) RWY 22

ROCKWOOD MUNI (RKW)

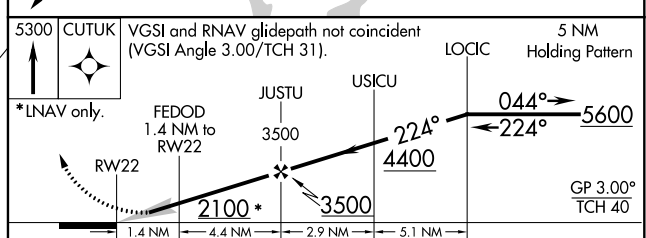
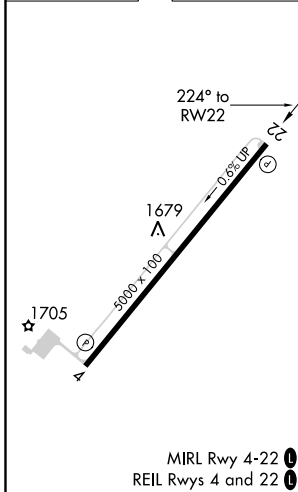
NA For uncompensated Baro-VNAV systems, LNAV/VNAV NA below -18°C (0°F) or above 33°C (91°F). DME/DME RNP-0.3 NA. When local altimeter setting not received, use Crossville altimeter setting; increase LPV DA to 1987 feet and visibility all Cats ¼ SM; increase LNAV/VNAV DA to 2011 feet and visibility all Cats ¼ SM; increase all MDA 80 feet and increase LNAV Cat C and D visibility ¼ SM and Circling Cat C visibility ½ SM. Baro-VNAV NA when using Crossville altimeter setting.

MISSED APPROACH: Climb to 5300 direct CUTUK and hold, continue climb-in-hold to 5300.

AWOS-3 118.775	ATLANTA CENTER 133.6 254.3	UNICOM 122.8 (CTAF)
--------------------------	--------------------------------------	-------------------------------



ELEV 1664	TDZE 1662
-----------	-----------



CATEGORY	A	B	C	D
LPV DA		1912-7/8	250 (300-7/8)	
LNAV/VNAV DA		1936-7/8	274 (300-7/8)	
LNAV MDA		1980-1	318 (400-1)	
CIRCLING	2100-1 436 (500-1)	2200-1 536 (600-1)	2260-1½ 596 (600-1½)	2780-3 1116 (1200-3)

SE-1, 11 AUG 2022 to 08 SEP 2022

SE-1, 11 AUG 2022 to 08 SEP 2022

WAAS CH 82026 W04A	APP CRS 044°	Rwy Idg TDZE Apt Elev	5000 1664 1664
----------------------------------------	------------------------	-----------------------------	-------------------------------------------

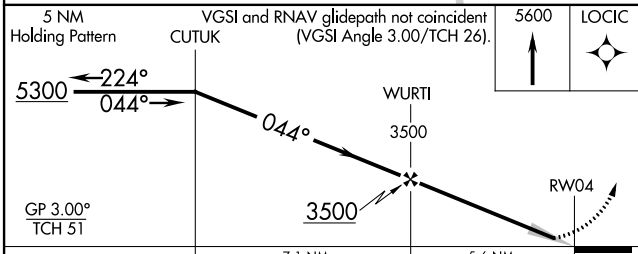
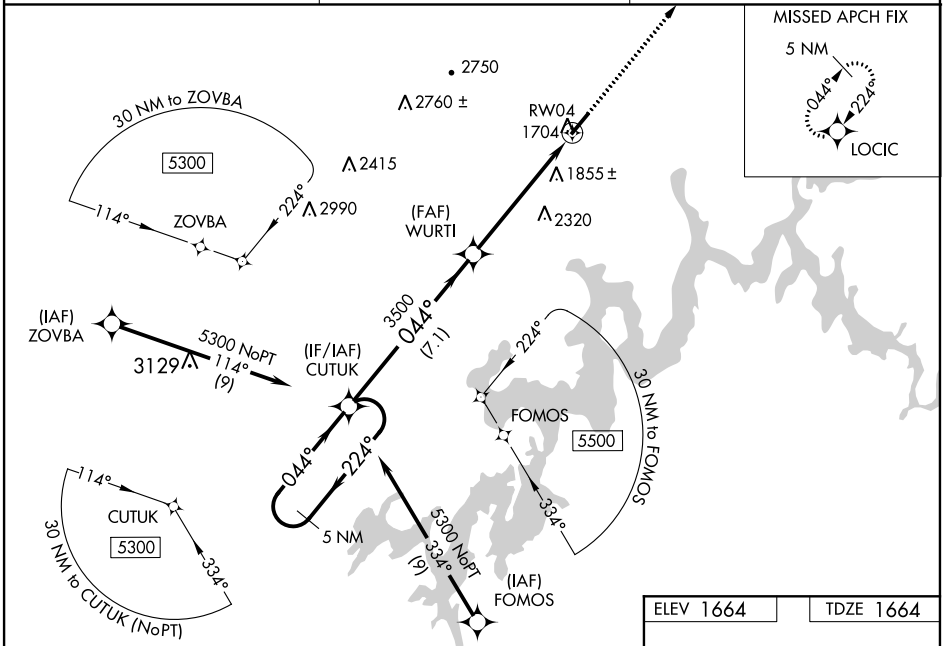
RNAV (GPS) RWY 4

ROCKWOOD MUNI (RKW)

NA Baro-VNAV NA when using Crossville altimeter setting. For uncompensated Baro-VNAV systems, LNAV/VNAV NA below -18°C (0°F) or above 33°C (91°F). DME/DME RNP-0.3 NA. When local altimeter setting not received, use Crossville altimeter setting: increase DA to 1989 feet and LPV and LNAV/VNAV visibility all Cats 1/2 SM; increase all MDA 80 feet and LNAV Cat C and D visibility 1/2 SM and Circling Cat C visibility 1/2 SM.

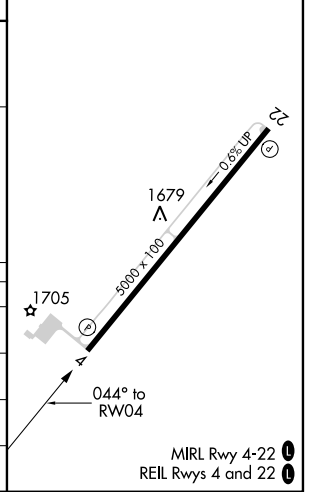
MISSED APPROACH: Climb to 5600 direct LOCIC and hold, continue climb-in-hold to 5600.

AWOS-3 118.775	ATLANTA CENTER 133.6 254.3	UNICOM 122.8 (CTAF)
--------------------------	--------------------------------------	-------------------------------



ELEV 1664	TDZE 1664
-----------	-----------

CATEGORY	A	B	C	D
LPV DA		1914-3/4	250 (300-3/4)	
LNAV/VNAV DA		1914-3/4	250 (300-3/4)	
LNAV MDA	2100-1	436 (500-1)	2100-1 3/8	436 (500-1 3/8)
CIRCLING	2100-1 436 (500-1)	2200-1 536 (600-1)	2260-1 1/2 596 (600-1 1/2)	2780-3 1116 (1200-3)



SE-1, 11 AUG 2022 to 08 SEP 2022

SE-1, 11 AUG 2022 to 08 SEP 2022

VOR/DME HCH 117.6 Chan 123	APP CRS 240°	Rwy Idg TDZE Apt Elev	5000 1662 1664
------------------------------------------------	------------------------	-----------------------------	-------------------------------------------

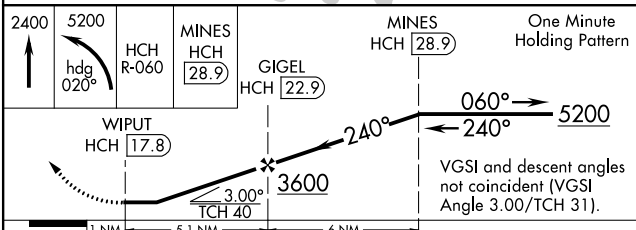
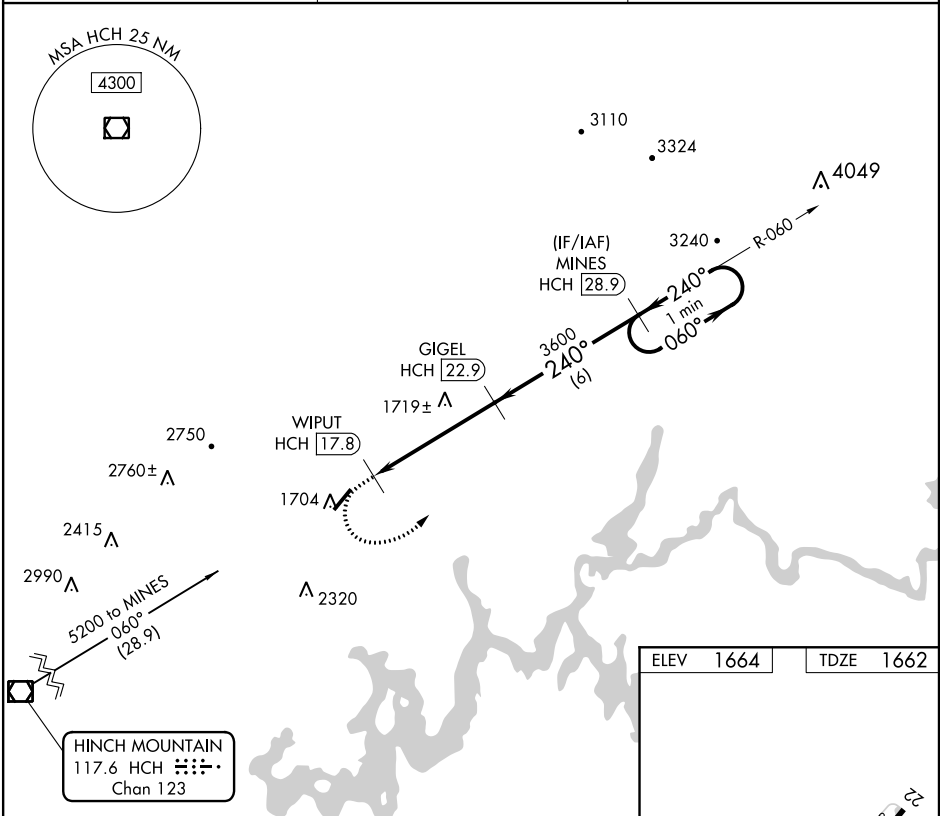
VOR/DME RWY 22

ROCKWOOD MUNI (RKW)

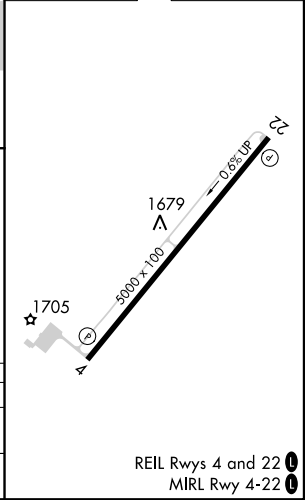
⚠ Circling Rwy 4 NA at night. When local altimeter setting not received, use Crossville altimeter setting: increase all MDA 80 feet and S-22 Cats C and D visibility ½ SM, Circling Cat C visibility ½ SM.

MISSED APPROACH: Climb to 2400 then climbing left turn to 5200 on heading 020° and HCH R-060 to MINES 28.9 DME and hold.

AWOS-3 118.775	ATLANTA CENTER 133.6 254.3	UNICOM 122.8 (CTAF) 📻
--------------------------	--------------------------------------	----------------------------------------



ELEV 1664	TDZE 1662
-----------	-----------



CATEGORY	A	B	C	D
S-22	2160-1¼ 498 (500-1¼)			2160-1½ 498 (500-1½)
CIRCLING	2160-1¼ 496 (500-1¼)	2200-1¼ 536 (600-1¼)	2260-1½ 596 (600-1½)	2780-3 1116 (1200-3)

SE-1, 11 AUG 2022 to 08 SEP 2022

SE-1, 11 AUG 2022 to 08 SEP 2022