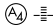


LOC/DME I-RMN	APP CRS	Rwy Idg	5000
108.75	329°	TDZE	196
Chan 24 (Y)		Apt Elev	212

ILS or LOC RWY 33

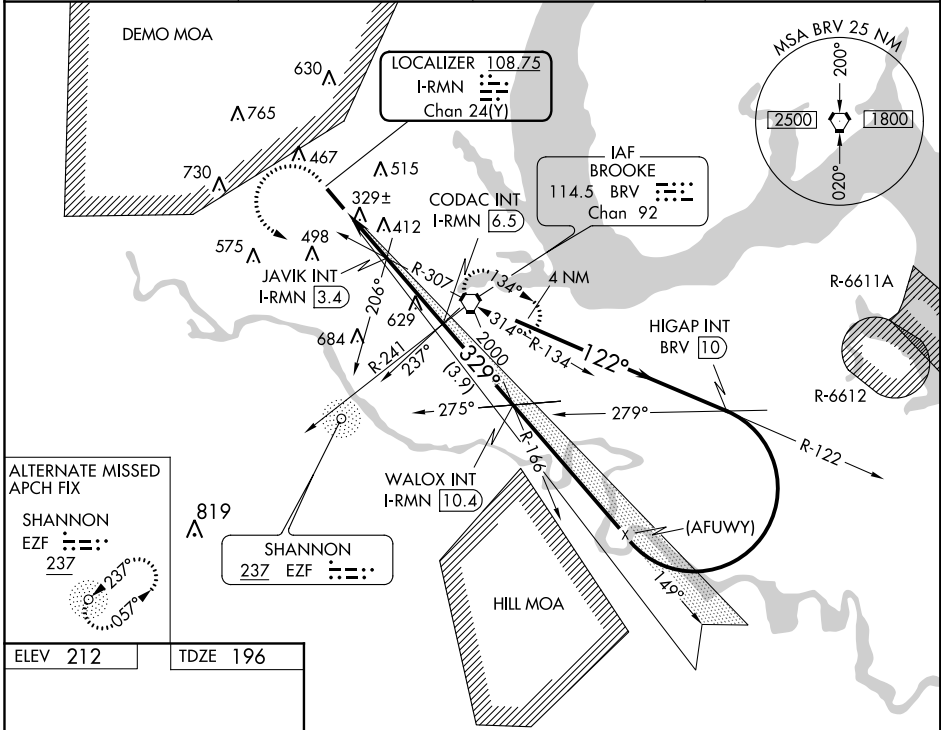
STAFFORD RGNL (RMN)

▽ If local altimeter setting not received, use Shannon, Fredericksburg, VA altimeter setting and increase all DH/MDAs 40 feet.
△NA Inoperative table does not apply to S-ILS 33 and to S-LOC Cats B and C. DME or ADF required.

MALS 

MISSED APPROACH: Climb to 600 then climbing left turn to 2000 direct BRV VORTAC and hold.

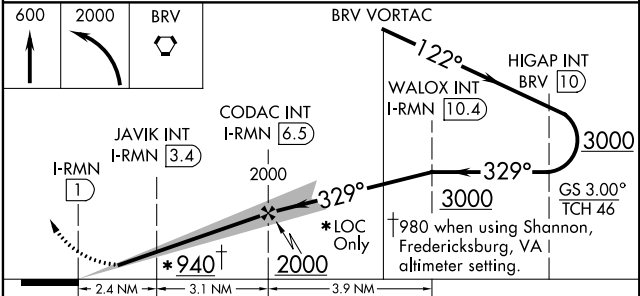
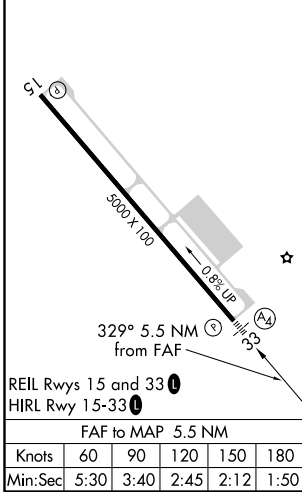
AWOS-3 126.325	POTOMAC APP CON 128.525 306.925	GCO 135.075	UNICOM 122.725 (CTAF) 0
--------------------------	---	-----------------------	-----------------------------------



ALTERNATE MISSED APCH FIX

SHANNON
EZF
237

ELEV 212	TDZE 196
----------	----------



CATEGORY	A	B	C	D
S-ILS 33		396- ³ / ₄	200 (200- ³ / ₄)	
S-LOC 33		580- ³ / ₄	384 (400- ³ / ₄)	580-1 ¹ / ₄ 384 (400-1 ¹ / ₄)
CIRCLING	720-1 508 (600-1)	740-1 528 (600-1)	840-1 ³ / ₄ 628 (700-1 ³ / ₄)	860-2 648 (700-2)

NE-3, 06 DEC 2018 to 03 JAN 2019

NE-3, 06 DEC 2018 to 03 JAN 2019

WAAS CH 81805 W33A	APP CRS 329°	Rwy Idg TDZE Apt Elev	5000 196 212
--	------------------------	-----------------------------	---

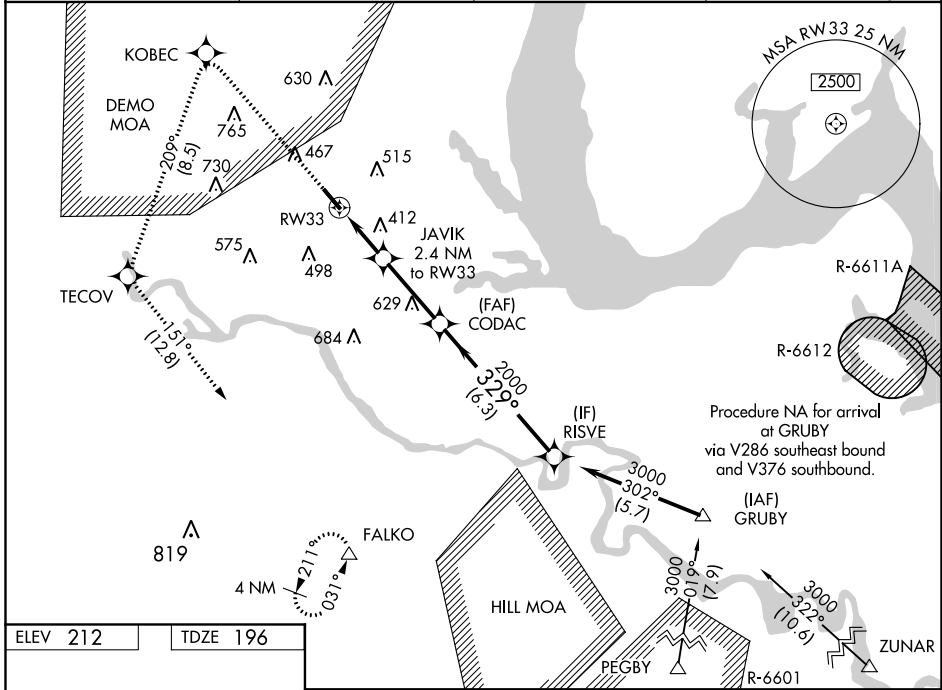
RNAV (GPS) RWY 33

STAFFORD RGNL (RMN)

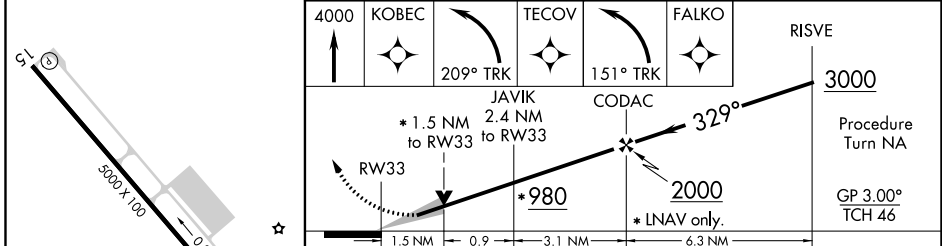
⚠ If local altimeter setting not received, use Shannon, Fredericksburg, VA altimeter setting and increase all DAs/MDAs 40 feet. Baro/VNAV NA below -15°C (5°F). VDP and Baro-VNAV NA when using Shannon, Fredericksburg, VA altimeter setting. Inoperative table does not apply to LNAV Cat C. DME/DME RNP-0.3 NA.

⚠ NA MISSED APPROACH: Climb to 4000 direct KOBEC and left turn via 209° track to TECOV and left turn via 151° track to FALCO and hold.

AWOS-3 126.325	POTOMAC APP CON 128.525 306.925	GCO 135.075	UNICOM 122.725 (CTAF) 0
--------------------------	---	-----------------------	-----------------------------------



ELEV 212	TDZE 196
----------	----------



CATEGORY	A	B	C	D
LPV DA	450-¾	254 (300-¾)		450-1 254 (300-1)
LNAV/DA VNAV	460-¾	264 (300-¾)		460-1 264 (300-1)
LNAV MDA	700-¾	504 (500-¾)	700-1½	504 (500-1½)
CIRCLING	720-1 508 (600-1)	740-1 528 (600-1)	840-1¾ 628 (700-1¾)	880-2 668 (700-2)

NE-3, 06 DEC 2018 to 03 JAN 2019

NE-3, 06 DEC 2018 to 03 JAN 2019

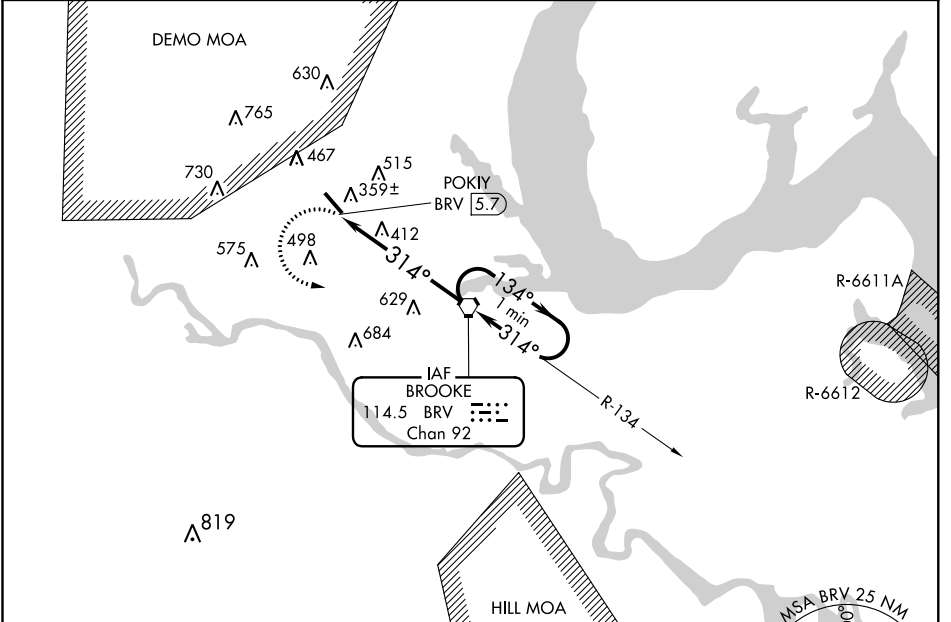
VORTAC BRV	APP CRS	Rwy Idg	5000
114.5	314°	TDZE	196
Chan 92		Apt Elev	212

VOR RWY 33
STAFFORD RGNL (RMN)

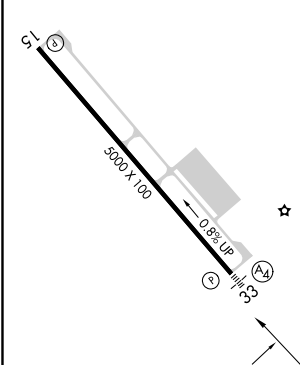
▼ If local altimeter setting not received, use Shannon, Fredericksburg, VA altimeter setting and increase all MDAs 40 feet. VDP NA with Shannon, Fredericksburg, VA altimeter setting. Inoperative table does not apply to Cat C.

MALS $(A_4) \equiv$ MISSED APPROACH: Climbing left turn to 2000 direct BRV VORTAC and hold.

AWOS-3 126.325	POTOMAC APP CON 128.525 306.925	GCO 135.075	UNICOM 122.725 (CTAF) 0
--------------------------	---	-----------------------	-----------------------------------



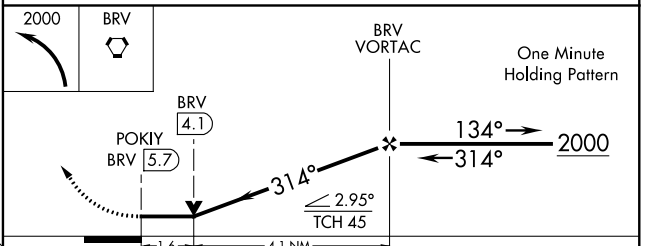
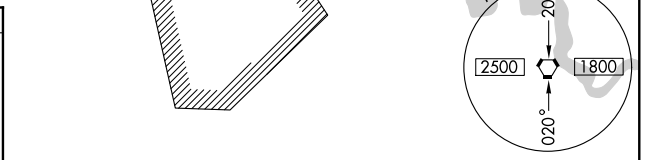
ELEV 212	TDZE 196
-----------------	-----------------



REIL Rwys 15 and 33
HIRL Rwy 15-33

FAF to MAP 5.7 NM

Knots	60	90	120	150	180
Min:Sec	5:42	3:48	2:51	2:17	1:54



CATEGORY	A	B	C	D
S-33	740- $\frac{3}{4}$ 544 (600- $\frac{3}{4}$)		740-1 $\frac{1}{2}$ 544 (600-1 $\frac{1}{2}$)	740-1 $\frac{3}{4}$ 544 (600-1 $\frac{3}{4}$)
CIRCLING	740-1	528 (600-1)	840-1 $\frac{3}{4}$ 628 (700-1 $\frac{3}{4}$)	860-2 648 (700-2)

NE-3, 06 DEC 2018 to 03 JAN 2019

NE-3, 06 DEC 2018 to 03 JAN 2019