

MC MINNVILLE, TENNESSEE

AL-5869 (FAA)

22363

WAAS CH <b>99433</b> <b>W23A</b>	APP CRS <b>233°</b>	Rwy Idg TDZE Apt Elev	<b>5000</b> <b>1026</b> <b>1032</b>
--	------------------------	-----------------------------	---

# RNAV (GPS) RWY 23

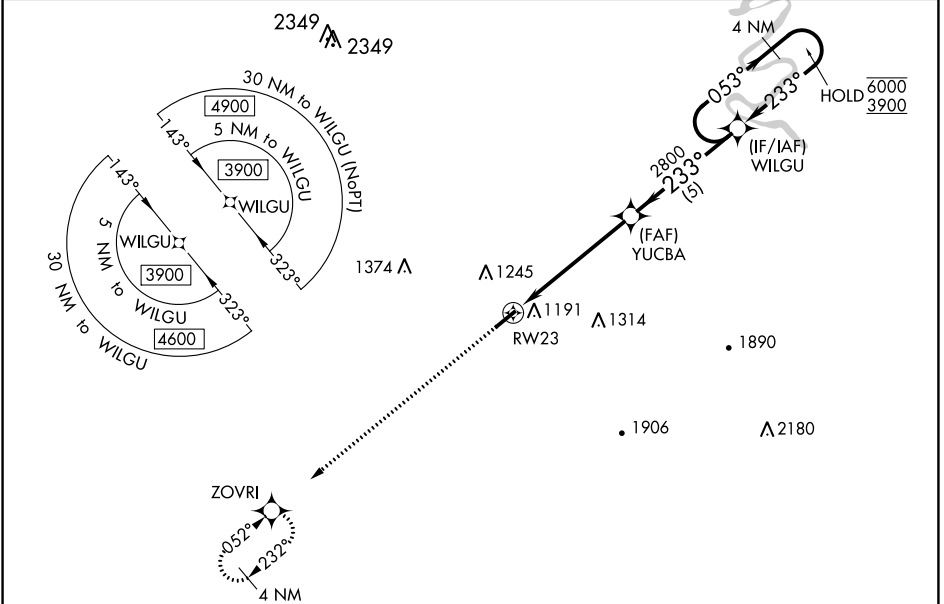
WARREN COUNTY MEML (RNC)

RNP APCH - GPS.

**⚠** Circling Rwy 5 NA at night. Rwy 23 helicopter visibility reduction below 3/4 SM NA.  
**⚠** For uncompensated Baro-VNAV systems, LNAV/VNAV NA below -17°C or above 54°C.

MISSED APPROACH: Climb to 3900 direct ZOVRI and hold, continue climb-in-hold to 3900.

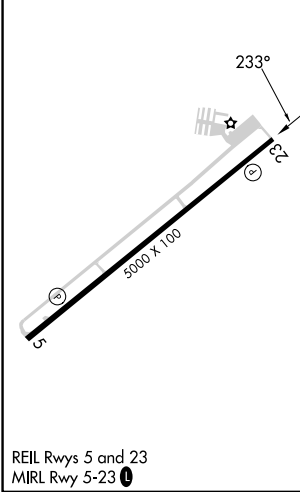
AWOS-3 <b>135.525</b>	MEMPHIS CENTER <b>128.15 323.125</b>	UNICOM <b>122.8 (CTAF) 0</b>
--------------------------	---	---------------------------------



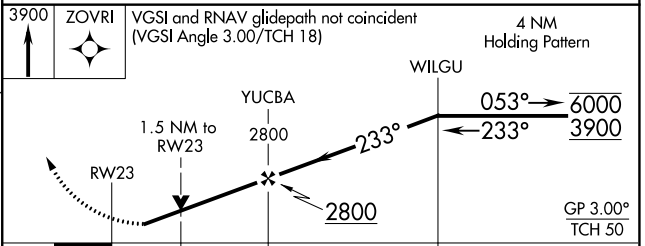
SE-1, 22 FEB 2024 to 21 MAR 2024

SE-1, 22 FEB 2024 to 21 MAR 2024

ELEV 1032	TDZE 1026
-----------	-----------



REIL Rwy 5 and 23  
MIRL Rwy 5-23



CATEGORY	A	B	C	D
LPV DA		1312-7/8	286 (300-7/8)	
LNAV/VNAV DA		1400-1	374 (400-1)	
LNAV MDA	1520-1	494 (500-1)	1520-1 3/8	494 (500-1 3/8)
<b>C</b> CIRCLING	1600-1	568 (600-1)	1600-1 1/2	1620-2
			568 (600-1 1/2)	588 (600-2)

MC MINNVILLE, TENNESSEE  
Amdt 1 03NOV22

35°42'N-85°51'W

# WARREN COUNTY MEML (RNC) RNAV (GPS) RWY 23

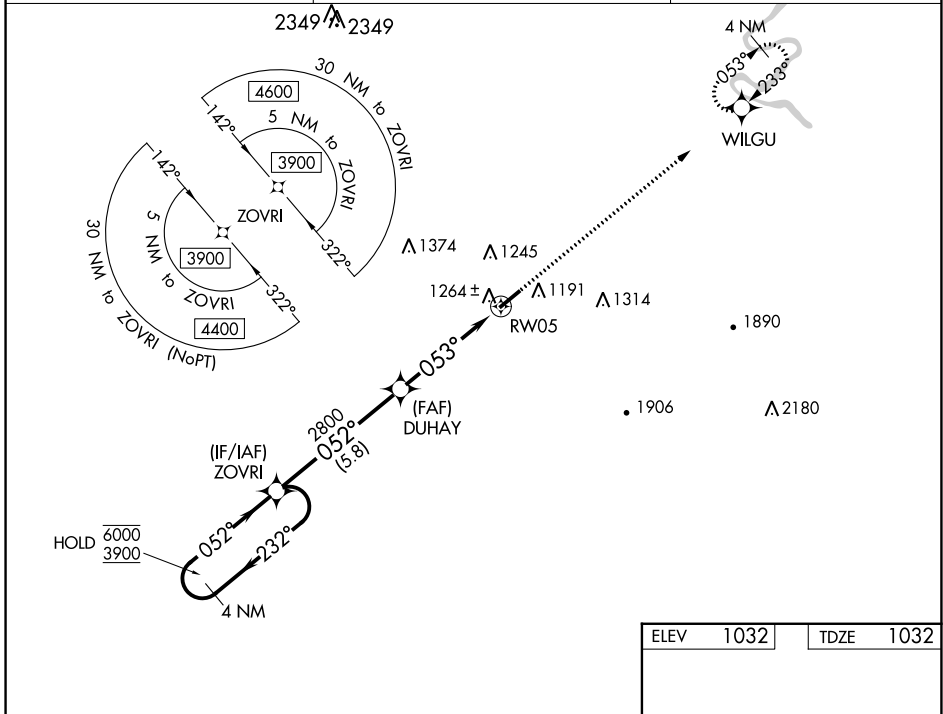
WAAS CH <b>81844</b> <b>W05A</b>	APP CRS <b>053°</b>	Rwy ldg TDZE Apt Elev	<b>5000</b> <b>1032</b> <b>1032</b>
--	------------------------	-----------------------------	---

# RNAV (GPS) RWY 5

WARREN COUNTY MEML (R.N.C)

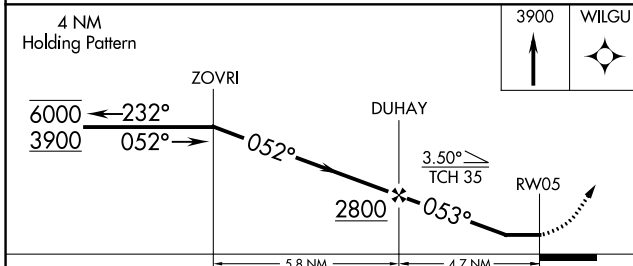
RNP APCH - GPS.	MISSED APPROACH: Climb to 3900 direct WILGU and hold, continue climb-in-hold to 3900.
Rwy 5 helicopter visibility reduction below 1 SM NA. Straight-in Rwy 5 NA at night, Circling Rwy 5 NA at night.	

AWOS-3 <b>135.525</b>	MEMPHIS CENTER <b>128.15 323.125</b>	UNICOM <b>122.8 (CTAF) 0</b>
--------------------------	---	---------------------------------

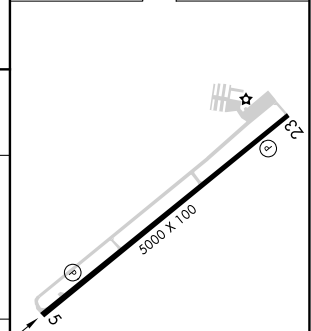


SE-1, 22 FEB 2024 to 21 MAR 2024

SE-1, 22 FEB 2024 to 21 MAR 2024



ELEV 1032	TDZE 1032
-----------	-----------



CATEGORY	A	B	C	D
LP MDA	1500-1	468 (500-1)	1500-1 $\frac{3}{8}$	468 (500-1 $\frac{3}{8}$ )
LNAV MDA	1520-1	488 (500-1)	1520-1 $\frac{3}{8}$	488 (500-1 $\frac{3}{8}$ )
CIRCLING	1600-1	568 (600-1)	1600-1 $\frac{1}{2}$ 568 (600-1 $\frac{1}{2}$ )	1620-2 588 (600-2)

REIL Rwy 5 and 23  
MRL Rwy 5-23 0