

COPTER ILS Y or LOC Y RWY 31

ROCHESTER INTL (RST)

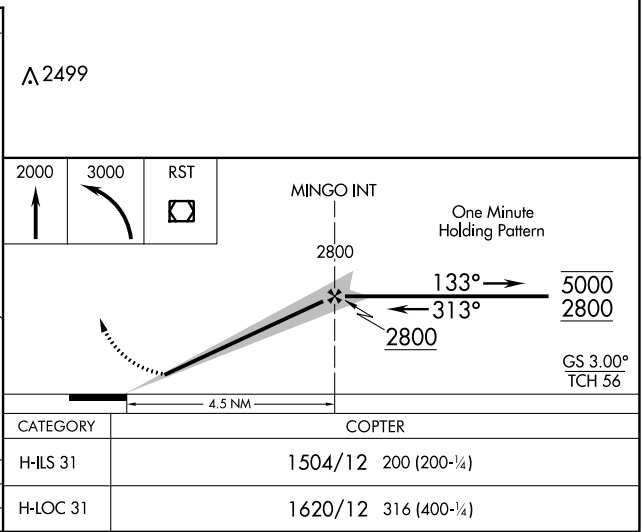
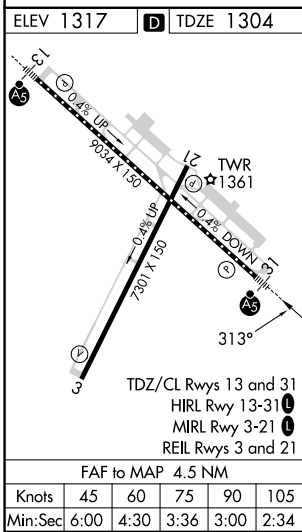
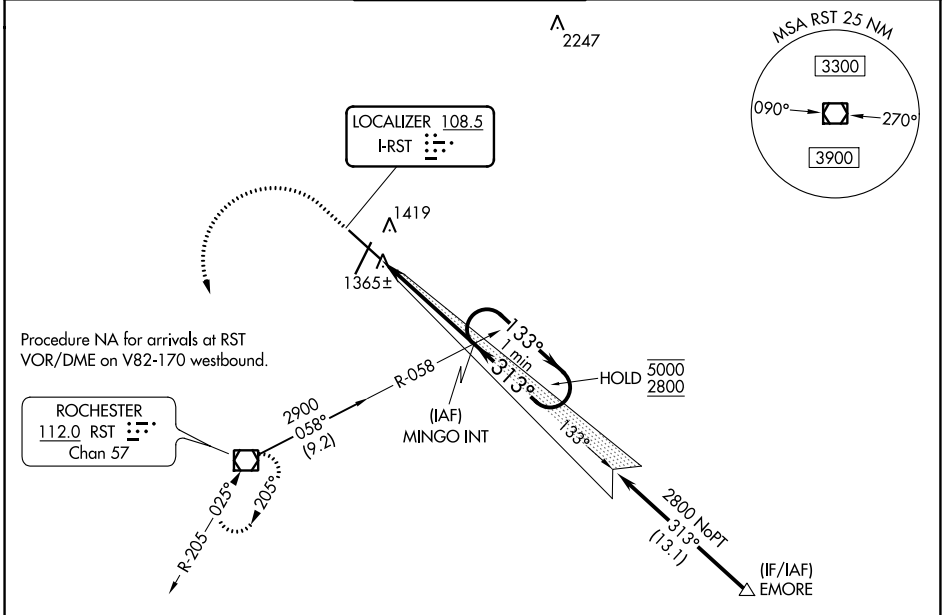
LOC I-RST 108.5	APP CRS 313°	Rwy Idg TDZE Apt Elev	9033 1304 1317
---------------------------	------------------------	-----------------------------	---

RADAR required for procedure entry at EMORE.
 For inop ALS increase visibility to RVR 5000.
 ASR



MISSED APPROACH: Climb to 2000 then climbing left turn to 3000 direct RST VOR/DME and hold.

ATIS 120.5	ROCHESTER APP CON* 119.8 251.125	ROCHESTER TOWER* 118.3 (CTAF) 257.8	GND CON 121.9	UNICOM 122.95
----------------------	--	---	-------------------------	-------------------------



COPTER ILS Y or LOC Y RWY 31

NC-1, 22 FEB 2024 to 21 MAR 2024

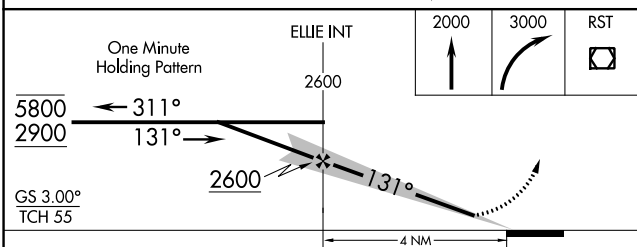
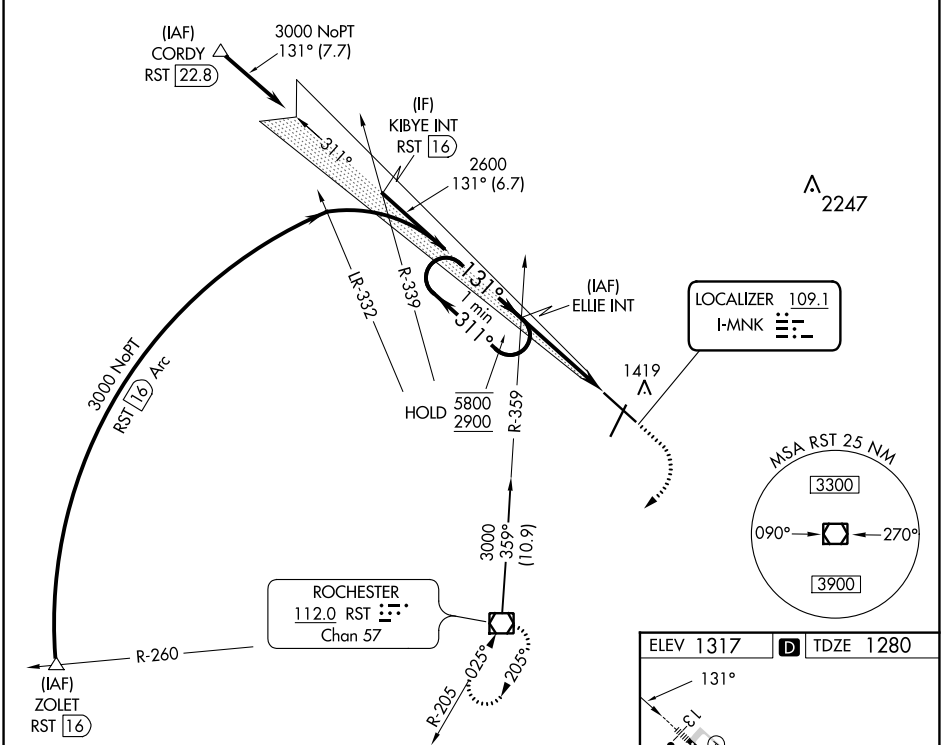
NC-1, 22 FEB 2024 to 21 MAR 2024

LOC I-MNKG 109.1	APP CRS 131°	Rwy Idg TDZE Apt Elev	9033 1280 1317
----------------------------	------------------------	-----------------------------	---

ILS or LOC RWY 13

ROCHESTER INTL (RST)

 MALS R	MISSED APPROACH: Climb to 2000 then climbing right turn to 3000 direct RST VOR/DME and hold.			
	ATIS 120.5	ROCHESTER APP CON* 119.8 251.125	ROCHESTER TOWER* 118.3(CTAF) 257.8	GND CON 121.9



ELEV 1317	D	TDZE 1280
-----------	---	-----------

TDZ/CL Rwy 13 and 31	TWR	1361
HIRL Rwy 13-31	MIRL Rwy 3-21	REIL Rwy 3 and 21

FAF to MAP 4 NM					
Knots	60	90	120	150	180
Min:Sec	4:00	2:40	2:00	1:36	1:20

CATEGORY	A	B	C	D
S-ILS 13	1480/18 200 (200-½)			
S-LOC 13	1680/24	400 (400-½)	1680/35	400 (400-¾)
CIRCLING	1720-1 403 (500-1)	1780-1 463 (500-1)	1900-1½ 583 (600-1½)	1900-2 583 (600-2)

NC-1, 22 FEB 2024 to 21 MAR 2024

NC-1, 22 FEB 2024 to 21 MAR 2024

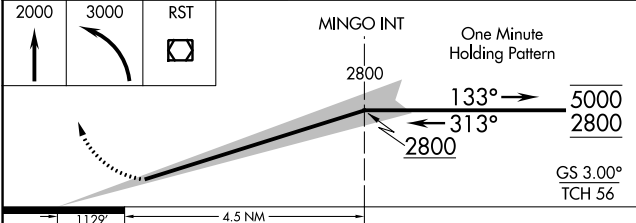
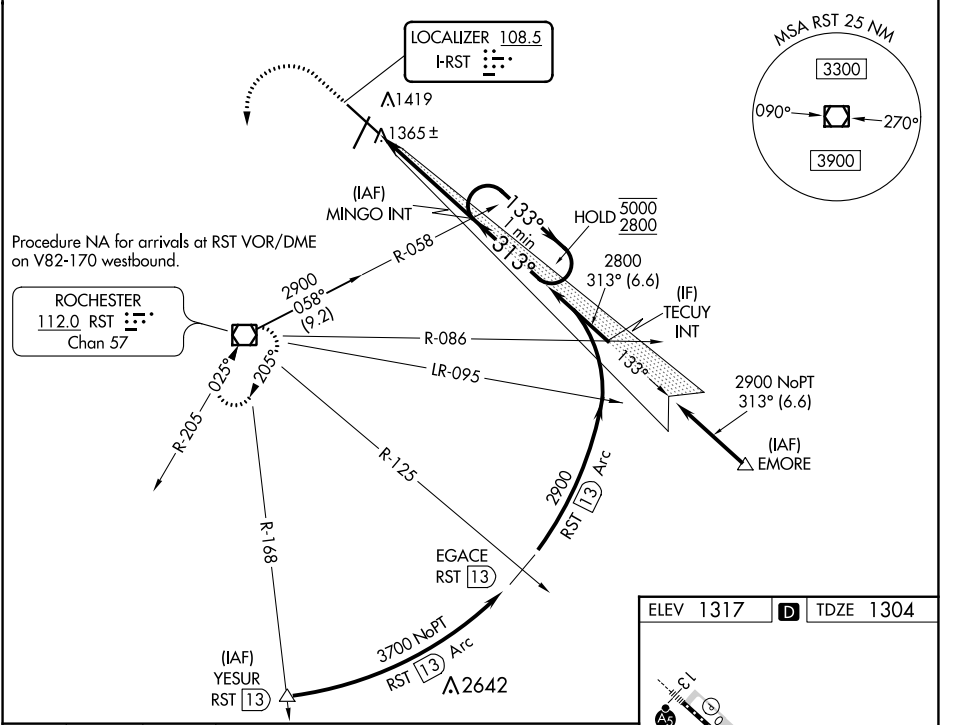
ILS Z RWY 31 (SA CAT I & II)

ROCHESTER INTL (RST)

LOC I-RST 108.5	APP CRS 313°	Rwy Idg 9033
		TDZE 1304
		Apt Elev 1317

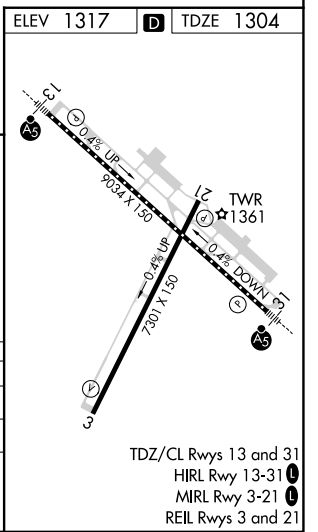
DME required for procedure entry at YESUR.		MALSR 	MISSED APPROACH: Climb to 2000 then climbing left turn to 3000 direct RST VOR/DME and hold.
SA CAT I : Requires specific OPSPEC, MSPEC, or LOA approval and use of HUD to DH. SA CAT II : Reduced lighting: Requires specific OPSPEC, MSPEC, or LOA approval and use of autoland or HUD to touchdown. Procedure NA when tower closed.			

ATIS 120.5	ROCHESTER APP CON* 119.8 251.125	ROCHESTER TOWER* 118.3 (CTAF) 257.8	GND CON 121.9	UNICOM 122.95
----------------------	--	---	-------------------------	-------------------------



CATEGORY	A	B	C	D
S-ILS 31	SA CAT I	RA 204/14	150 DA 1454	
S-ILS 31	SA CAT II	RA 104/12	100 DA 1404	

SA CATEGORY I & II ILS - SPECIAL AIRCREW & AIRCRAFT CERTIFICATION REQUIRED



NC-1, 22 FEB 2024 to 21 MAR 2024

NC-1, 22 FEB 2024 to 21 MAR 2024

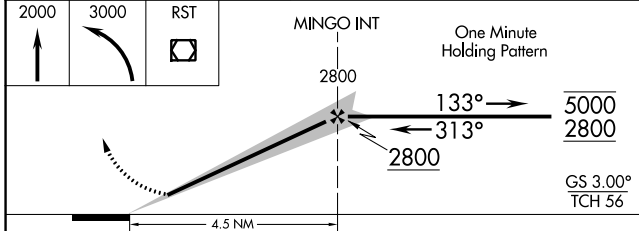
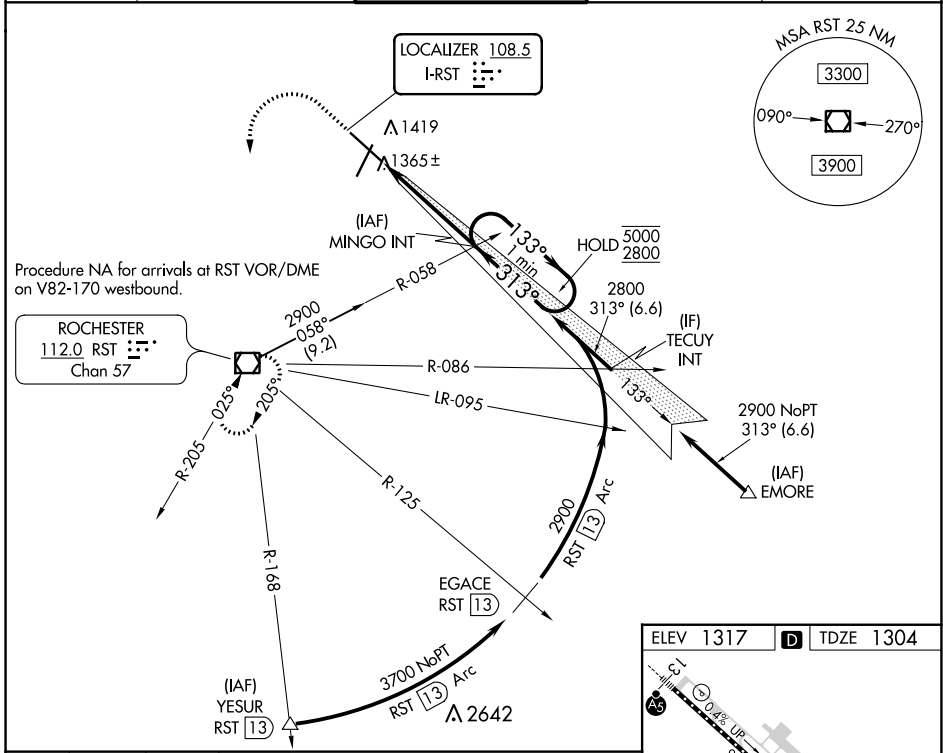
LOC I-RST 108.5	APP CRS 313°	Rwy Idg 9033
		TDZE 1304
		Apt Elev 1317

ILS Z or LOC Z RWY 31

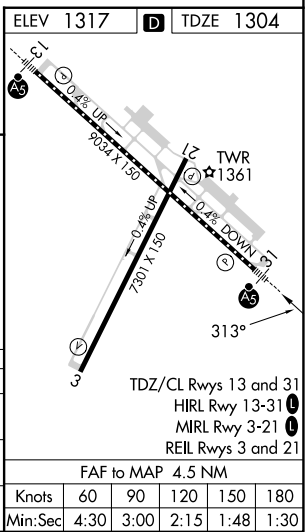
ROCHESTER INTL (RST)

DME required for procedure entry at YESUR.		MALSR	MISSED APPROACH: Climb to 2000 then climbing left turn to 3000 direct RST VOR/DME and hold.
For inop ALS, increase S-LOC 31 Cat C/D visibility to RVR 5500.		ASR	

ATIS 120.5	ROCHESTER APP CON* 119.8 251.125	ROCHESTER TOWER* 118.3 (CTAF) 257.8	GND CON 121.9	UNICOM 122.95
----------------------	--	---	-------------------------	-------------------------



CATEGORY	A	B	C	D
S-ILS 31	1504/18		200 (200-½)	
S-LOC 31	1620/24		316 (400-½)	
CIRCLING	1720-1 403 (500-1)	1780-1 463 (500-1)	1900-1½ 583 (600-½)	1900-2 583 (600-2)



NC-1, 22 FEB 2024 to 21 MAR 2024

NC-1, 22 FEB 2024 to 21 MAR 2024

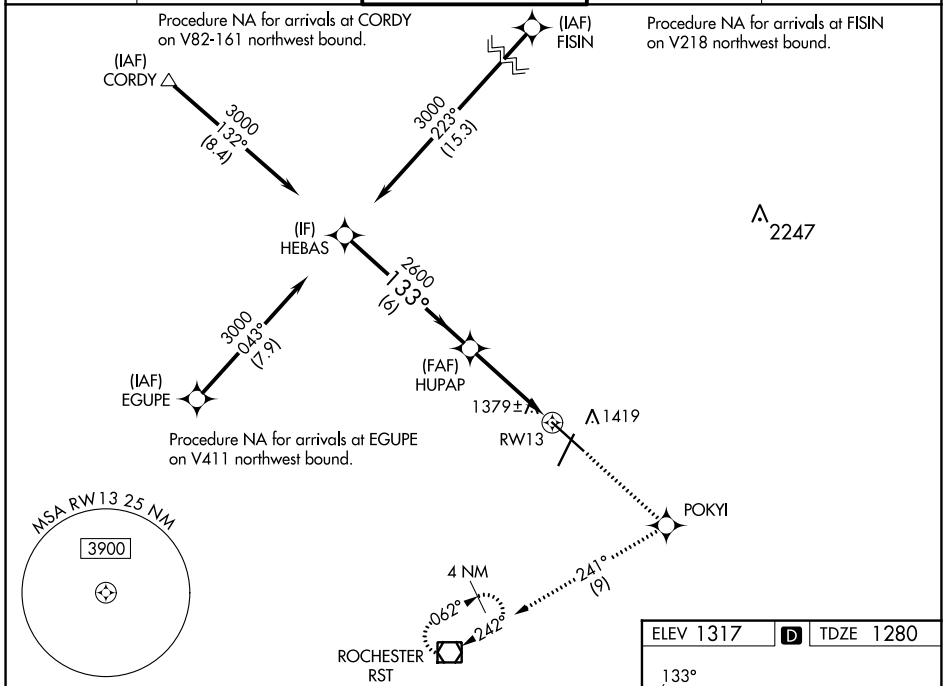
WAAS CH 90202 W13A	APP CRS 133°	Rwy Idg TDZE Apt Elev	9033 1280 1317
--	------------------------	-----------------------------	---

RNAV (GPS) RWY 13

ROCHESTER INTL (RST)

RNP APCH - GPS.	MALSR	MISSED APPROACH: Climb to 2900 direct POKYI and on track 241° to RST VOR/DME and hold.
ASR For uncompensated Baro-VNAV systems, LNAV/VNAV NA below -17°C or above 54°C. For inop ALS, increase LNAV Cat C/D visibility to RVR 5500.		

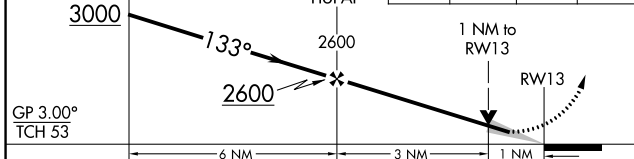
ATIS 120.5	ROCHESTER APP CON* 119.8 251.125	ROCHESTER TOWER* 118.3 (CTAF) 257.8	GND CON 121.9	UNICOM 122.95
----------------------	--	---	-------------------------	-------------------------



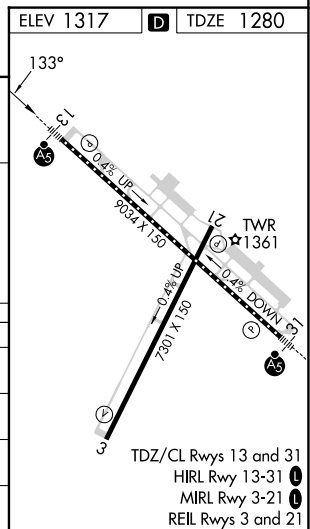
VGSI and RNAV glidepath not coincident (VGSI Angle 3.00/TCH 53).

HEBAS HUPAP POKYI RST

2900 tr 241°



CATEGORY	A	B	C	D
LPV DA	1530/18		250 (300-½)	
LNAV/VNAV DA	1679/50		399 (400-1)	
LNAV MDA	1640/24	360 (400-½)	1640/30 360 (400-¾)	1640/50 360 (400-1)
CIRCLING	1720-1 403 (500-1)	1780-1 463 (500-1)	1900-1½ 583 (600-1½)	1900-2 583 (600-2)



NC-1, 22 FEB 2024 to 21 MAR 2024

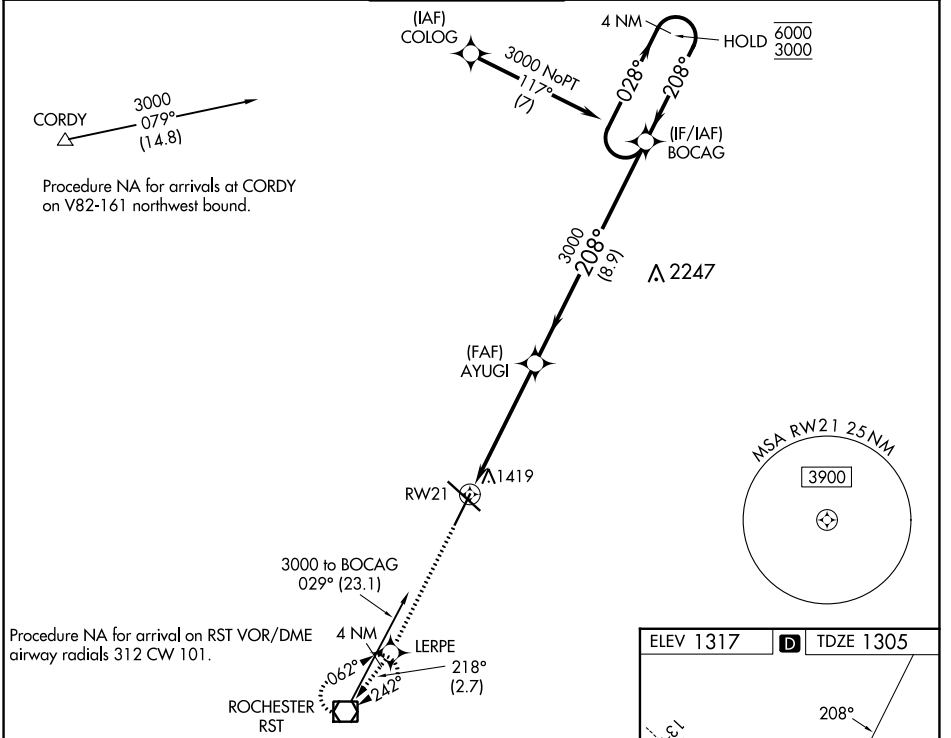
NC-1, 22 FEB 2024 to 21 MAR 2024

WAAS CH 57922 W21A	APP CRS 208°	Rwy Idg 7300 TDZE 1305 Apt Elev 1317
--	------------------------	---

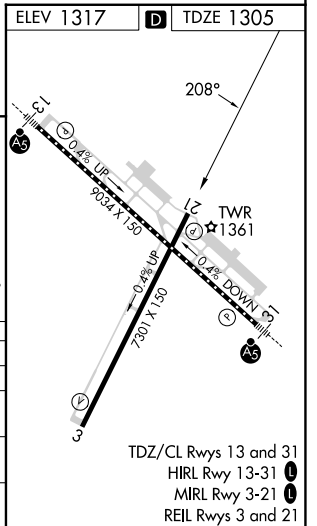
RNAV (GPS) RWY 21

ROCHESTER INTL (RST)

RNP APCH - GPS.		MISSED APPROACH: Climb to 3000 direct LERPE and on track 218° to RST VOR/DME and hold.	
⚠ For uncompensated Baro-VNAV systems, LNAV/VNAV ASR NA below -28°C or above 54°C.			
ATIS 120.5	ROCHESTER APP CON ★ 119.8 251.125	ROCHESTER TOWER ★ 118.3 (CTAF) 0 257.8	GND CON 121.9
		UNICOM 122.95	



3000	LERPE	tr 218°	RST	AYUGI	BOCAG	4 NM Holding Pattern
↑	✧		◻	3000		
		1.1 NM to RW21				
				208°	028°	6000 3000
				3000		GP 3.00° TCH 50
		1.1 NM	4.2 NM	8.9 NM		
CATEGORY	A	B	C	D		
LPV DA		1555-1	250 (300-1)			
LNAV/VNAV DA		1603-1	298 (300-1)			
LNAV MDA		1680-1	375 (400-1)			
CIRCLING	1720-1 403 (500-1)	1780-1 463 (500-1)	1900-1½ 583 (600-1½)	1900-2 583 (600-2)		



NC-1, 22 FEB 2024 to 21 MAR 2024

NC-1, 22 FEB 2024 to 21 MAR 2024

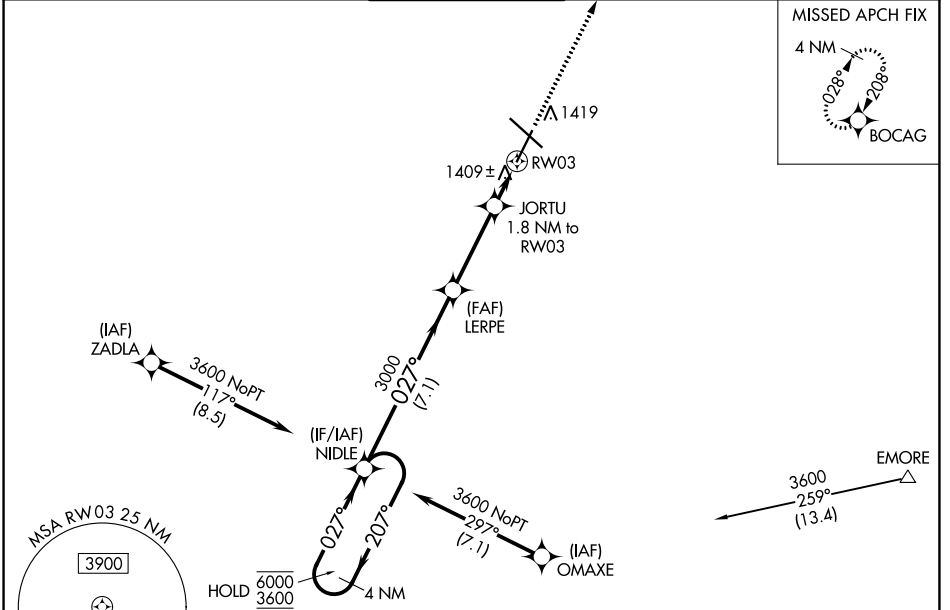
WAAS CH 69621 W03A	APP CRS 027°	Rwy Idg TDZE Apt Elev	7300 1317 1317
--	------------------------	-----------------------------	---

RNAV (GPS) RWY 3

ROCHESTER INTL (RST)

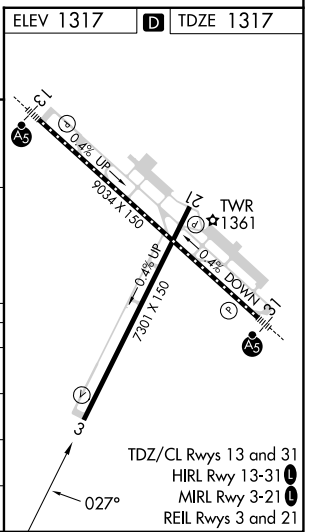
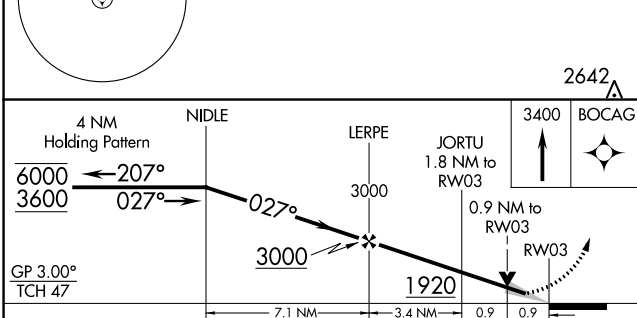
RNP APCH - GPS.		MISSED APPROACH: Climb to 3400 direct BOCAG and hold, continue climb-in-hold to 4800.		
ASR	For uncompensated Baro-VNAV systems, LNAV/VNAV NA below -28°C or above 54°C.			

ATIS 120.5	ROCHESTER APP CON * 119.8 251.125	ROCHESTER TOWER * 118.3 (CTAF) 257.8	GND CON 121.9	UNICOM 122.95
----------------------	---	--	-------------------------	-------------------------



NC-1, 22 FEB 2024 to 21 MAR 2024

NC-1, 22 FEB 2024 to 21 MAR 2024



CATEGORY	A	B	C	D
LPV DA		1567-1	250 (300-1)	
LNAV/VNAV DA		1592-1	275 (300-1)	
LNAV MDA		1660-1	343 (400-1)	
CIRCLING	1720-1 403 (500-1)	1780-1 463 (500-1)	1900-1½ 583 (600-1½)	1900-2 583 (600-2)

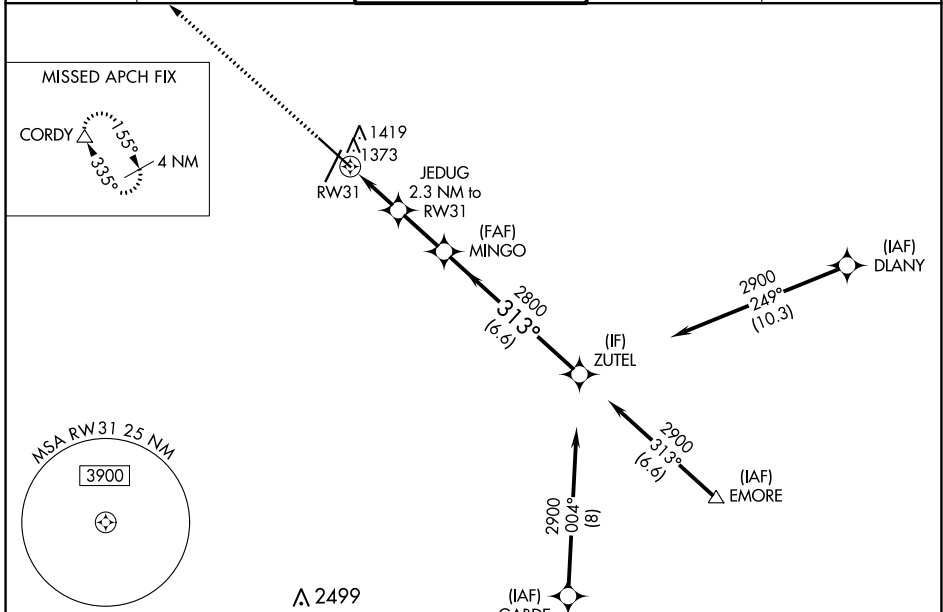
WAAS CH 49028 W31A	APP CRS 313°	Rwy Idg TDZE Apt Elev	9033 1304 1317
--	------------------------	-----------------------------	---

RNAV (GPS) RWY 31

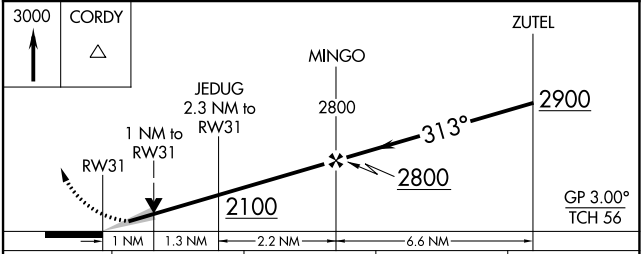
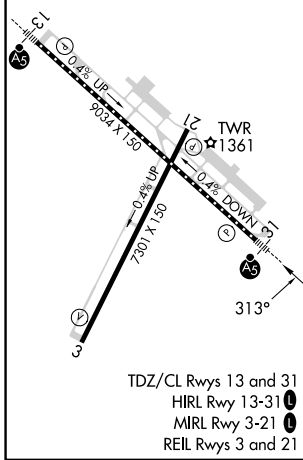
ROCHESTER INTL (RST)

RNP APCH - GPS.	MALSR 	MISSED APPROACH: Climb to 3000 direct CORDY and hold.
<p>ASR For uncompensated Baro-VNAV systems, LNAV/VNAV NA below -20°C or above 54°C. For inop ALS, increase LNAV/VNAV all Cats visibility to RVR 4500, increase LNAV Cat C/D visibility to RVR 5500.</p>		

ATIS 120.5	ROCHESTER APP CON* 119.8 251.125	ROCHESTER TOWER* 118.3 (CTAF) 257.8	GND CON 121.9	UNICOM 122.95
----------------------	--	---	-------------------------	-------------------------



ELEV 1317	D	TDZE 1304
-----------	----------	-----------



CATEGORY	A	B	C	D
LPV DA	1504/18 200 (200-½)			
LNAV/VNAV DA	1554/24 250 (300-½)			
LNAV MDA	1640/24	336 (400-½)	1640/35	336 (400-¾)
C CIRCLING	1720-1 403 (500-1)	1780-1 463 (500-1)	1900-1½ 583 (600-1½)	1900-2 583 (600-2)

NC-1, 22 FEB 2024 to 21 MAR 2024

NC-1, 22 FEB 2024 to 21 MAR 2024