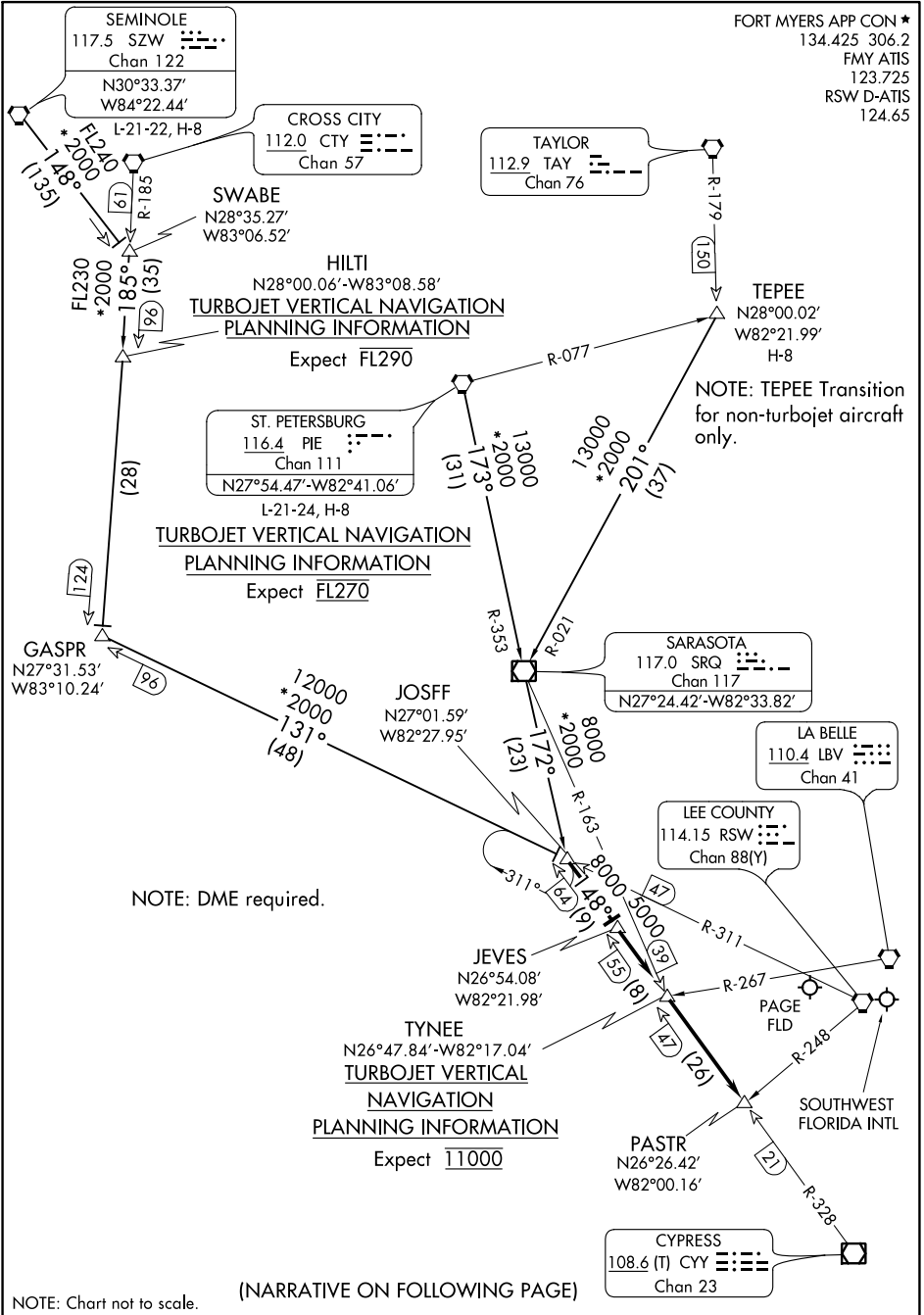


JOSFF FIVE ARRIVAL

FORT MYERS, FLORIDA



SE-3, 22 FEB 2024 to 21 MAR 2024

SE-3, 22 FEB 2024 to 21 MAR 2024

NOTE: Chart not to scale.

(NARRATIVE ON FOLLOWING PAGE)

JOSFF FIVE ARRIVAL

FORT MYERS, FLORIDA

ARRIVAL ROUTE DESCRIPTION

ST PETERSBURG TRANSITION (PIE.JOSFF5): From over PIE VORTAC via SRQ-R-353 to SRQ VOR/DME, then via SRQ R-172 to JOSFF INT. Thence

SEMINOLE TRANSITION (SZW.JOSFF5): From over SZW VORTAC via SZW R-148 to SWABE INT, then via CTY R-185 to GASPR INT, then via RSW R-311 to JOSFF INT. Thence

TEPEE TRANSITION (TEPEE.JOSFF5): From over TEPEE INT via SRQ R-021 to SRQ VOR/DME, then via SRQ R-172 to JOSFF INT. Thence. . . .

....From over JOSFF INT via CYY R-328 to JEVES and via CYY R-328 to PASTR INT. Expect RADAR vectors to final approach course.

SE-3, 22 FEB 2024 to 21 MAR 2024

SE-3, 22 FEB 2024 to 21 MAR 2024

SHFTY FIVE ARRIVAL (RNAV)

FORT MYERS, FLORIDA

ARRIVAL ROUTE DESCRIPTION

CYNTA TRANSITION (CYNTA.SHFTY5)
HIBAC TRANSITION (HIBAC.SHFTY5)

From SHFTY on track 183° to WRTRS, then on track 161° to MAZZY, then on track 161° to MOEMO, then on track 160° to LBV VORTAC, thence....

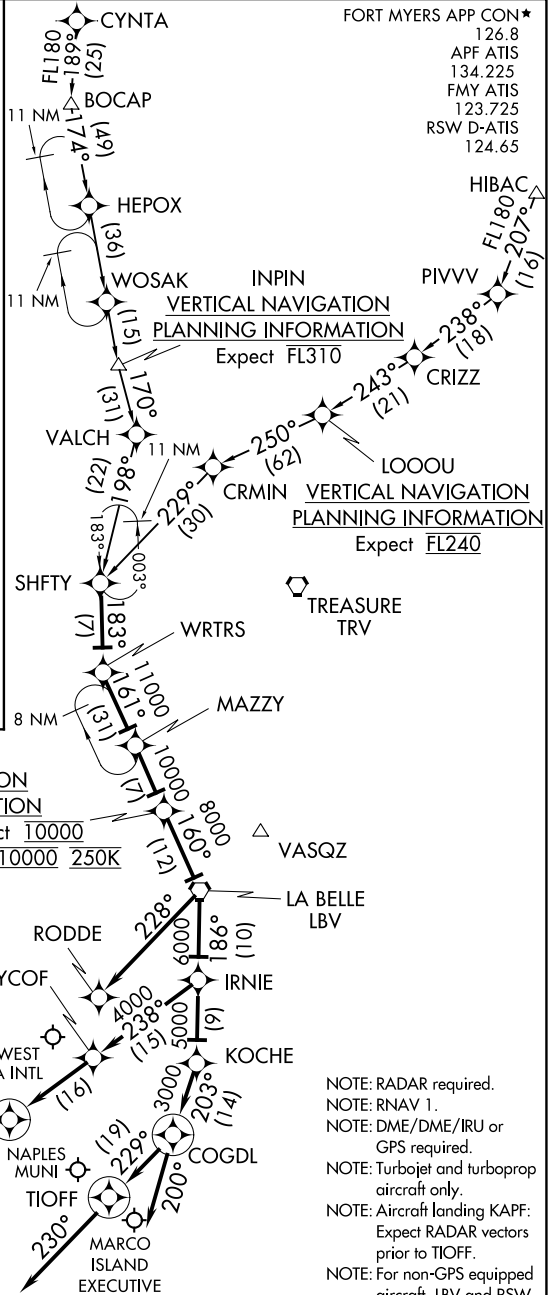
....Landing KRSW Rwy 6 and KFMY: From LBV VORTAC on track 186° to IRNIE, then on track 238° to WYCOF, then on track 238° to PONTY, then on heading 240° or as assigned by ATC. Expect RADAR vectors to final approach course.

....Landing KRSW Rwy 24: From LBV VORTAC on heading 228°. Expect RADAR vectors to final approach course.

....Landing KAPF: From LBV VORTAC on track 186° to IRNIE, then on track 186° to KOCHE, then on track 203° to COGDL, then on heading 230°. Expect RADAR vectors to final approach course.

....Landing KMKY: From LBV VORTAC on track 186° to IRNIE, then on track 186° to KOCHE, then on track 203° to COGDL, then on heading 200°. Expect RADAR vectors to final approach course.

FORT MYERS APP CON*
126.8
APF ATIS
134.225
FMY ATIS
123.725
RSW D-ATIS
124.65



MOEMO
VERTICAL NAVIGATION
PLANNING INFORMATION
KRSW Landing Rwy 6 Expect 10000
KRSW Landing Rwy 24 Expect 10000 250K

PONTY
VERTICAL NAVIGATION
PLANNING INFORMATION
Expect 4000

- NOTE: RADAR required.
- NOTE: RNAV 1.
- NOTE: DME/DME/IRU or GPS required.
- NOTE: Turbojet and turboprop aircraft only.
- NOTE: Aircraft landing KAPF: Expect RADAR vectors prior to TIOFF.
- NOTE: For non-GPS equipped aircraft, LBV and RSW must be operational.

NOTE: Chart not to scale.

SHFTY FIVE ARRIVAL (RNAV)

(SHFTY.SHFTY5) 28FEB19

FORT MYERS, FLORIDA

TYNEE TWO ARRIVAL (RNAV)

FORT MYERS, FLORIDA

FORT MYERS APP CON *
 134.425 306.2
 FMY ATIS
 123.725
 RSW D-ATIS
 124.65

ARRIVAL ROUTE DESCRIPTION

- BAGGS TRANSITION (BAGGS.TYNEE2)
- CODGR TRANSITION (CODGR.TYNEE2)
- FRZBE TRANSITION (FRZBE.TYNEE2)
- PLYER TRANSITION (PLYER.TYNEE2)

From TYNEE on track 149° to PASTR, thence....

....Landing KRSW Rwy 6: from PASTR on track 107° to LENPE, then on heading 107° or as assigned by ATC. Expect RADAR vectors to final approach course.

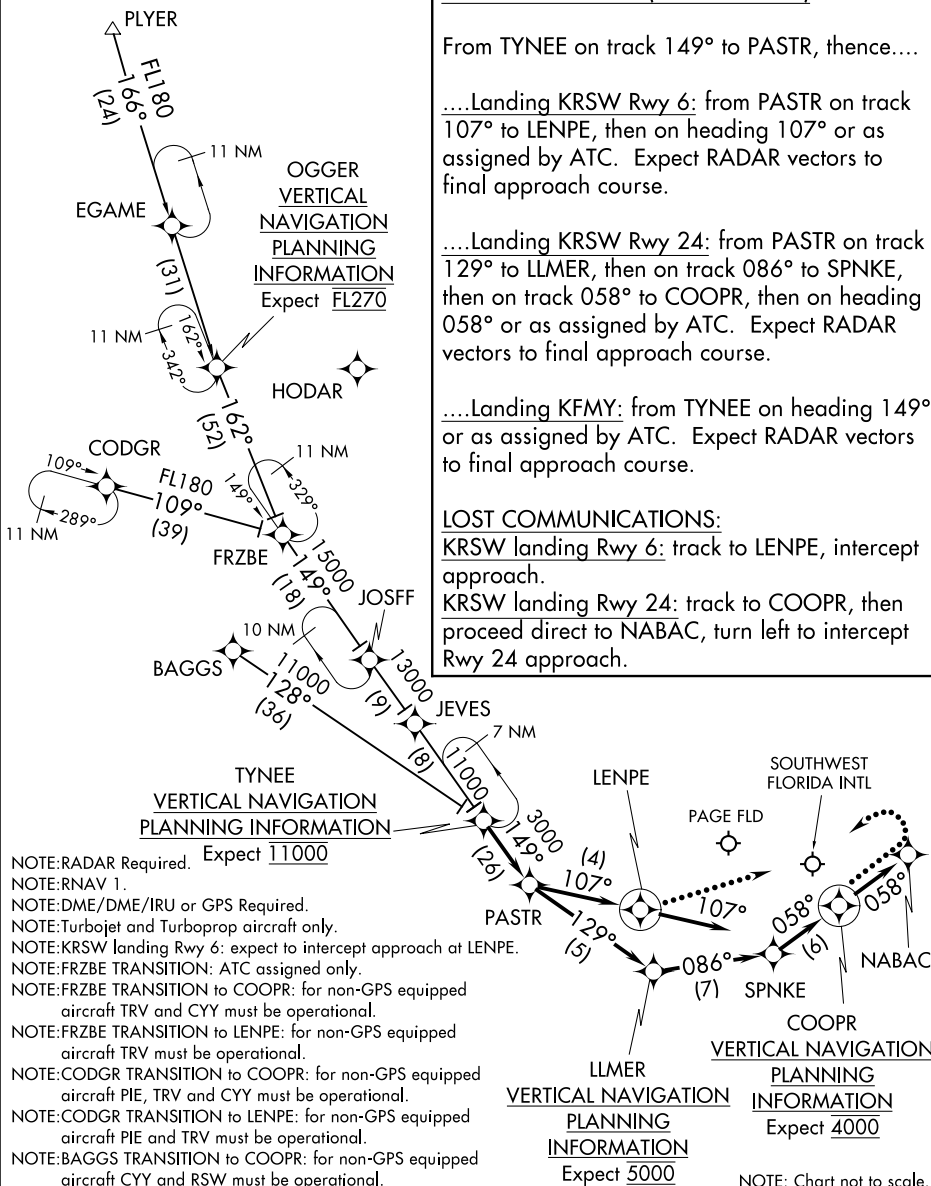
....Landing KRSW Rwy 24: from PASTR on track 129° to LLMER, then on track 086° to SPNKE, then on track 058° to COOPR, then on heading 058° or as assigned by ATC. Expect RADAR vectors to final approach course.

....Landing KFMY: from TYNEE on heading 149° or as assigned by ATC. Expect RADAR vectors to final approach course.

LOST COMMUNICATIONS:

KRSW landing Rwy 6: track to LENPE, intercept approach.

KRSW landing Rwy 24: track to COOPR, then proceed direct to NABAC, turn left to intercept Rwy 24 approach.



- NOTE:RADAR Required.
- NOTE:RNAV 1.
- NOTE:DME/DME/IRU or GPS Required.
- NOTE:Turbopjet and Turboprop aircraft only.
- NOTE:KRSW landing Rwy 6: expect to intercept approach at LENPE.
- NOTE:FRZBE TRANSITION: ATC assigned only.
- NOTE:FRZBE TRANSITION to COOPR: for non-GPS equipped aircraft TRV and CYY must be operational.
- NOTE:FRZBE TRANSITION to LENPE: for non-GPS equipped aircraft TRV must be operational.
- NOTE:CODGR TRANSITION to COOPR: for non-GPS equipped aircraft PIE, TRV and CYY must be operational.
- NOTE:CODGR TRANSITION to LENPE: for non-GPS equipped aircraft PIE and TRV must be operational.
- NOTE:BAGGS TRANSITION to COOPR: for non-GPS equipped aircraft CYY and RSW must be operational.

NOTE: Chart not to scale.

SE-3, 22 FEB 2024 to 21 MAR 2024

SE-3, 22 FEB 2024 to 21 MAR 2024

TYNEE TWO ARRIVAL (RNAV)

(TYNEE.TYNEE2) 13SEP18

FORT MYERS, FLORIDA