

WAAS CH 69340 W 225A	APP CRS 251°	Rwy Idg TDZE Apt Elev	3502 1254 1255
--	------------------------	-----------------------------	---

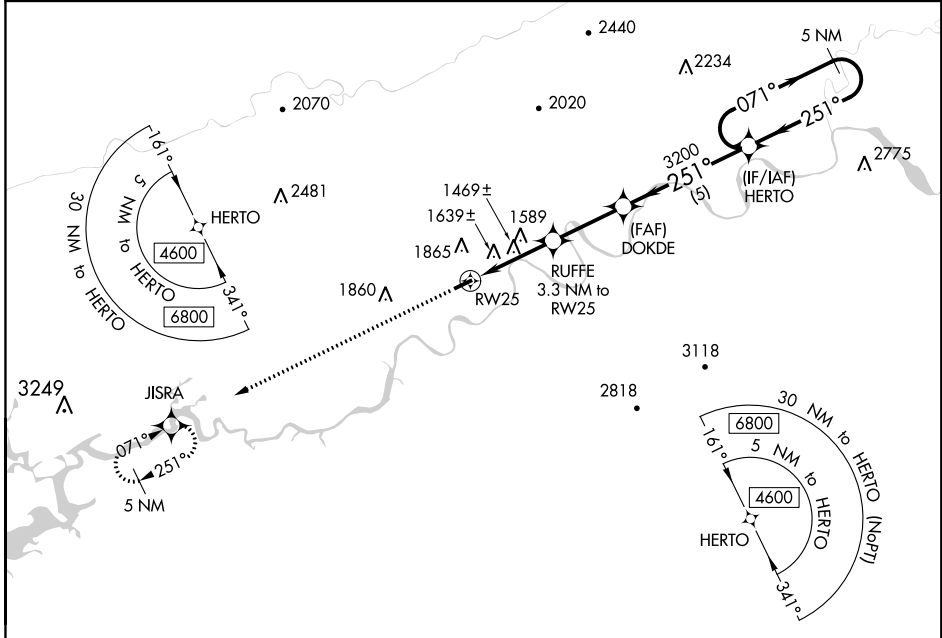
RNAV (GPS) RWY 25

HAWKINS COUNTY (RVN)

NA DME/DME RNP-0.3 NA. Procedure NA at night. Obtain local altimeter setting on CTAF; when not received, use Tri-Cities altimeter setting and increase all MDA 120 feet, increase LP Cat C visibility 3/8 SM, LNAV Cat B visibility 1/4 SM, Cat C visibility 3/8 SM, and increase Circling Cat B visibility 1/4 SM. Rwy 7, 25 helicopter visibility reduction below 1 SM NA.

MISSED APPROACH:
Climb to 4300 direct JISRA and hold.

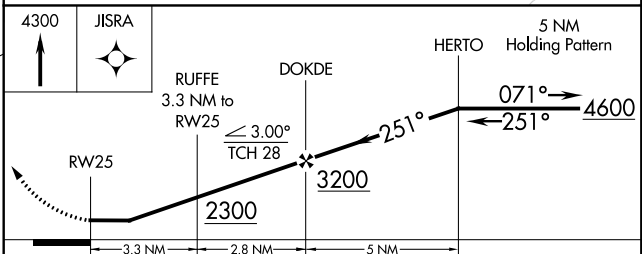
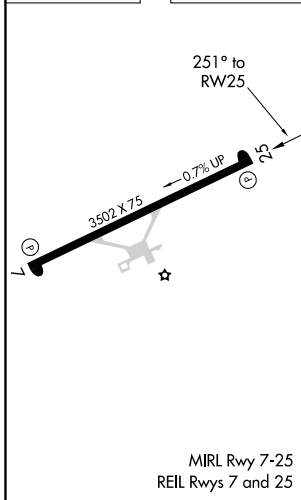
TRI CITY APP CON ★ 128.05 317.5	UNICOM 122.8 (CTAF)
---	-------------------------------



SE-1, 27 JAN 2022 to 24 FEB 2022

SE-1, 27 JAN 2022 to 24 FEB 2022

ELEV 1255	TDZE 1254
-----------	-----------



CATEGORY	A	B	C	D
LP MDA	1720-1	466 (500-1)	1720-1 3/8 466 (500-1 1/8)	NA
LNAV MDA	1900-1	646 (700-1)	1900-1 7/8 646 (700-1 1/8)	NA
CIRCLING	2180-1 1/4	925 (1000-1 1/4)	2320-3 1065 (1100-3)	NA

WAAS CH 58040 W07A	APP CRS 071°	Rwy Idg TDZE Apt Elev	3502 1255 1255
--	------------------------	-----------------------------	---

RNAV (GPS) RWY 7

HAWKINS COUNTY (RVN)

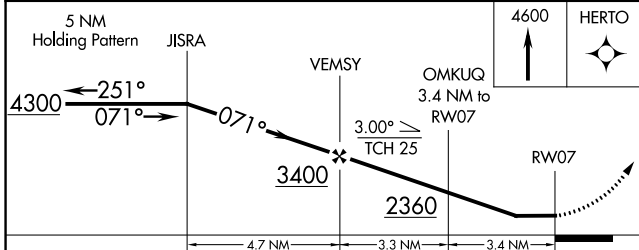
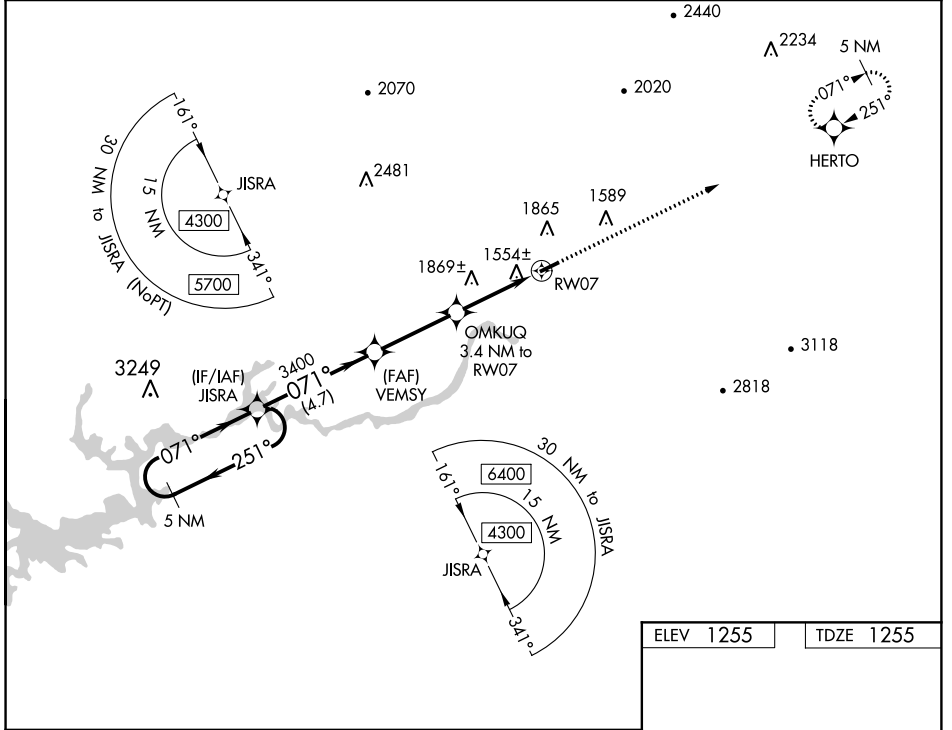
▽ NA
△ NA

DME/DME RNP-0.3 NA. Procedure NA at night. Obtain local altimeter setting on CTAF; when not received, use Tri-Cities altimeter setting and increase all MDA 120 feet, increase LP Cat C visibility $\frac{3}{8}$ SM, increase LNAV Cat A and Circling Cat B visibility $\frac{1}{4}$ SM. Rwy 7, 25 helicopter visibility reduction below 1 SM NA.

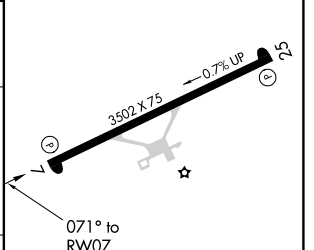
MISSED APPROACH: Climb to 4600 direct HERTO and hold, continue climb-in-hold to 4600.

TRI CITY APP CON ★
128.05 317.5

UNICOM
122.8 (CTAF)



ELEV 1255	TDZE 1255
-----------	-----------



CATEGORY	A	B	C	D
LP MDA	1820-1	565 (600-1)	1820-1 $\frac{1}{8}$ 565 (600-1 $\frac{1}{8}$)	NA
LNAV MDA	2040-1 785 (800-1)	2040-1 $\frac{1}{4}$ 785 (800-1 $\frac{1}{4}$)	2040-2 $\frac{1}{2}$ 785 (800-2 $\frac{1}{2}$)	NA
C CIRCLING	2180-1 $\frac{1}{4}$	925 (1000-1 $\frac{1}{4}$)	2320-3 1065 (1100-3)	NA

MIRL Rwy 7-25
REIL Rws 7 and 25

SE-1, 27 JAN 2022 to 24 FEB 2022

SE-1, 27 JAN 2022 to 24 FEB 2022