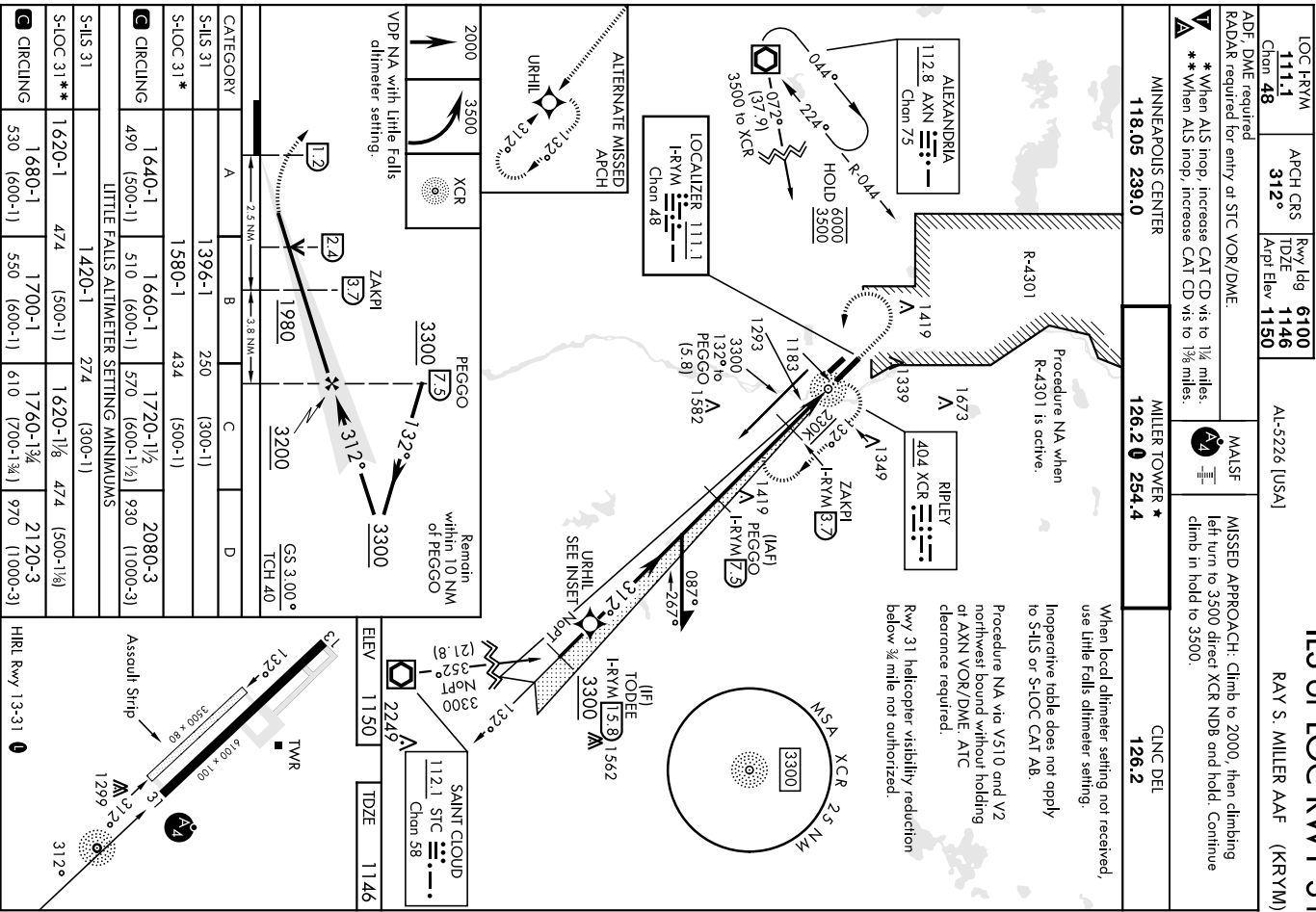


ILS or LOC RWY 31

RAY S. MILLER AAF (KRYM)



ILS or LOC RWY 31

RAY S. MILLER AAF (KRYM)

RNAV (GPS) RWY 13

RAY S. MILLER AAF (KRYM)

AL-5226 (USA)

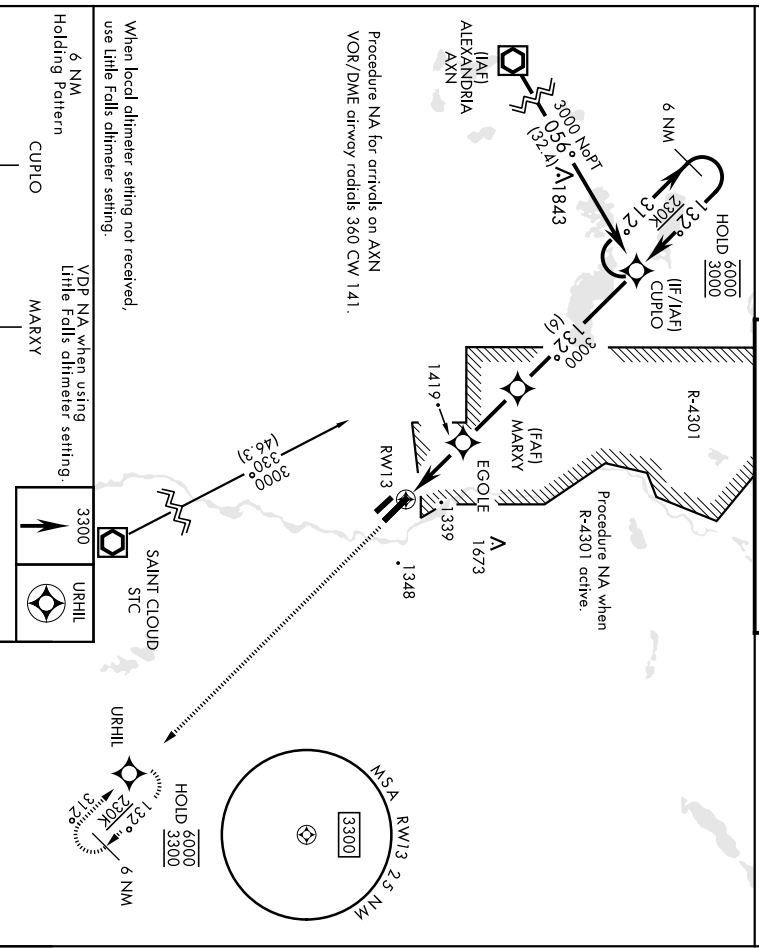
Rwy Idg 6100
TDZE 1150
Asph Elev 1150

RNP APCH-GPS

RADAR required for procedure entry at STC VOR/DME.

MISSED APPROACH: Climb to 3300 direct URHLL and hold.

| | | |
|---|--------------------------------------|--------------------------|
| MINNEAPOLIS CENTER 118.05 239.0 | MILLER TOWER ★ 126.2 254.4 | CINQ DEL 126.2 |
|---|--------------------------------------|--------------------------|



Procedure NA for arrivals on AXN
 VOR/DME airway radials 360 CW 141.

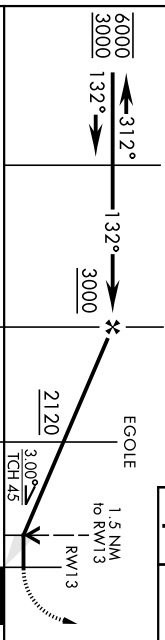
When local dlimmer setting not received,
 use Little Falls dlimmer setting.

6 NM
 Holding Pattern
 CUPLO

VDP NA when using
 Little Falls dlimmer setting.
 MARXY

3300
 URHLL

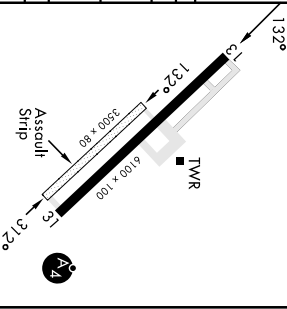
ELEV 1150 TDZE 1150



| CATEGORY | A | B | C | D |
|----------|--------|-------------|--------------|--------------|
| LNAV MDA | 1680-1 | 530 (600-1) | 1680-1½ | 530 (600-1½) |
| CIRCLING | 1680-1 | 530 (600-1) | 1720-1½ | 2080-3 |
| | | | 570 (600-1½) | 930 (1000-3) |

LITTLE FALLS ALTIMETER SETTING

| LNAV MDA | 1720-1 | 570 (600-1) | 1720-1½ | 570 (600-1½) |
|----------|--------|-------------|--------------|--------------|
| CIRCLING | 1720-1 | 570 (600-1) | 1760-1¾ | 2120-3 |
| | | | 610 (700-1¾) | 970 (1000-3) |



CAMP RIPLEY, MINNESOTA

46°05'N-94°21'W

RAY S. MILLER AAF (KRYM)

Amch 3 05OCT23

RNAV (GPS) RWY 13

CAMP RIPLEY, MINNESOTA

21112

RNAV (GPS) RWY 31

RAY S. MILLER AAF (KRYM)

AL-5226 (USA)

| | | |
|----------|----------|------|
| APCH CRS | Rwy Idg | 6100 |
| 312° | THRE | 1146 |
| | APR Elev | 1150 |



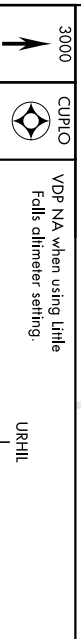
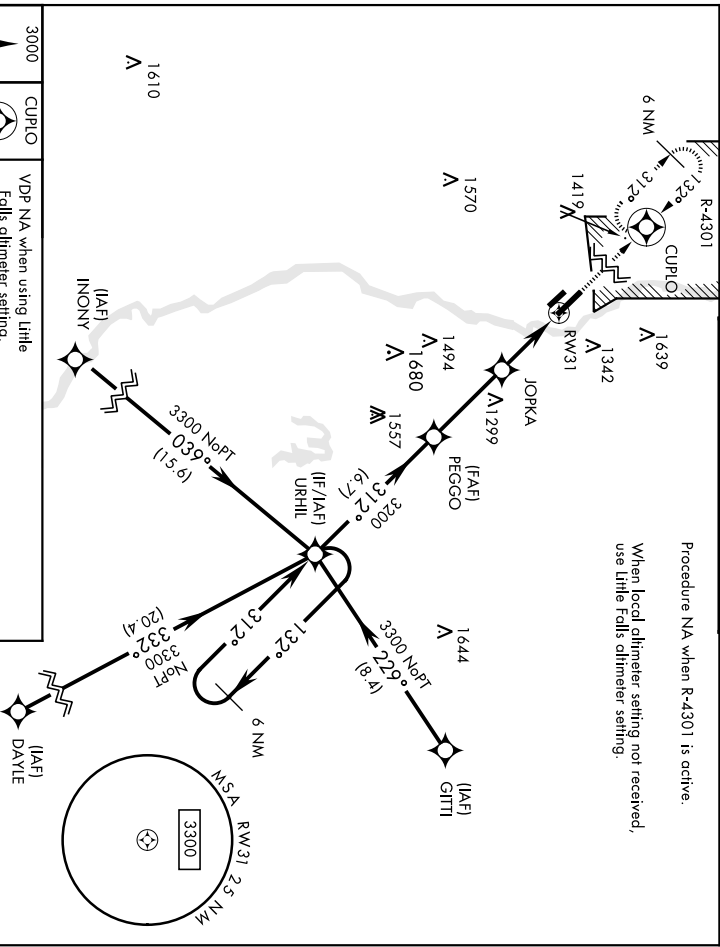
MISSED APPROACH: Climb to 3000 direct CUPLO and hold.

| | |
|--------------------|--|
| MINNEAPOLIS CENTER | |
| 118.05 239.0 | |

| | |
|----------------|--|
| MILLER TOWER * | |
| 126.2 254.4 | |

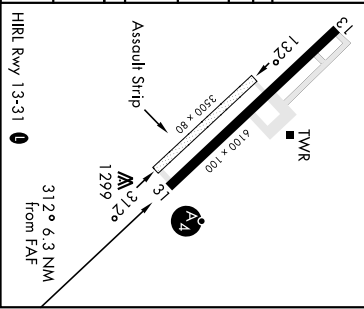
| | |
|-----------|--|
| CLINC DEL | |
| 126.2 | |

Procedure NA when R-4301 is active.
When local altimeter setting not received, use Little Falls altimeter setting.



| | | | |
|------|------|------|------|
| ELEV | 1150 | THRE | 1146 |
|------|------|------|------|

| CATEGORY | A | | B | | C | | D | |
|------------|--------------------------------|-------------|---------|--------------|--------|--------------|--------------|------|
| | 1.3 NM | to RW31 | JOPKA | PEGGO | 3200 | URHILL | 132° | 3300 |
| LNAV MDA * | 1580-¾ | 434 | (500-¾) | 1580-1 | 434 | (500-1) | | |
| CIRCLING | 1640-1 | 490 (500-1) | 1660-1 | 510 (600-1) | 2080-3 | 570 (600-1½) | 930 (1000-3) | |
| | LITTLE FALLS ALTIMETER SETTING | | | | | | | |
| LNAV MDA * | 1620-¾ | 474 | (500-¾) | 1620-1/8 | 474 | (500-1/8) | | |
| CIRCLING | 1680-1 | 530 (600-1) | 1760-1¾ | 610 (700-1¾) | 2120-3 | 970 (1000-3) | | |



CAMP RIPLEY, MINNESOTA
Amdt 2A 19JUL18

46°05'N-94°21'W

RAY S. MILLER AAF (KRYM) RNAV (GPS) RWY 31