

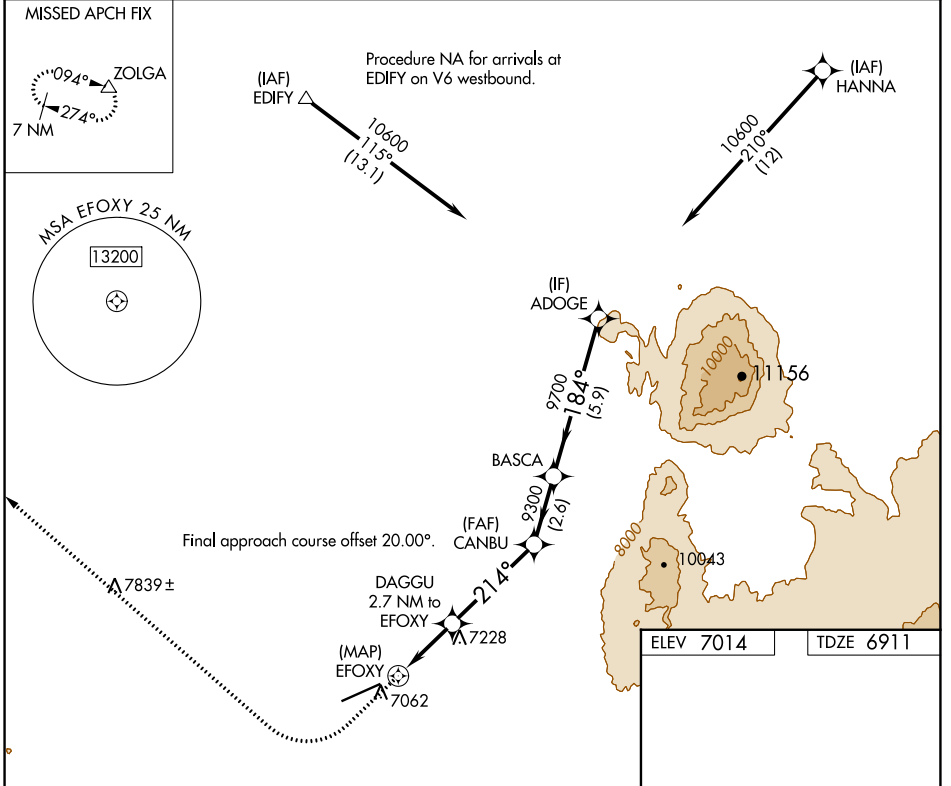
APP CRS 214°	Rwy Idg 8801
TDZE 6911	Apt Elev 7014

RNAV (GPS) RWY 23

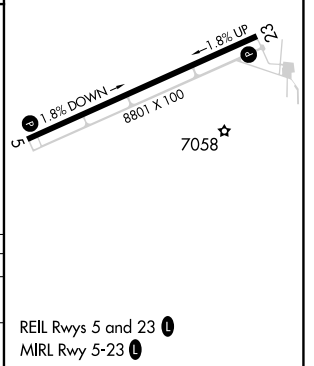
SHIVELY FLD (SAA)

RNP APCH - GPS.	MISSED APPROACH: Climb to 7800 then climbing right turn to 11000 direct ZOLGA and hold.
Rwy 23 helicopter visibility reduction below 3/4 SM NA.	

AWOS-3PT 118.175	DENVER CENTER 132.1 254.35	UNICOM 122.8 (CTAF) ①
----------------------------	--------------------------------------	---------------------------------



7800	11000	ZOLGA
DAGGU 2.7 NM to EFOXY		
EFOXY	EFOXY	EFOXY
1.5 NM to EFOXY	1.2 NM	3.00° TCH 47
8000	9300	9700
0.7	1.5 NM	4.1 NM
CANBU BASCA ADODGE		
184°		
10600		
CATEGORY A B C D		
LNVA MDA	7620-1 709 (700-1)	7620-2 709 (700-2)
CIRCLING	7620-1 606 (700-1)	7740-2 7860-2 3/4 726 (800-2) 846 (900-2 3/4)



NW-1, 22 FEB 2024 to 21 MAR 2024

NW-1, 22 FEB 2024 to 21 MAR 2024

WAAS CH 65820 W05A	APP CRS 054°	Rwy ldg 8801
		TDZE 7014
		Apt Elev 7014

RNAV (GPS) RWY 5

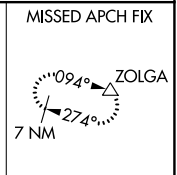
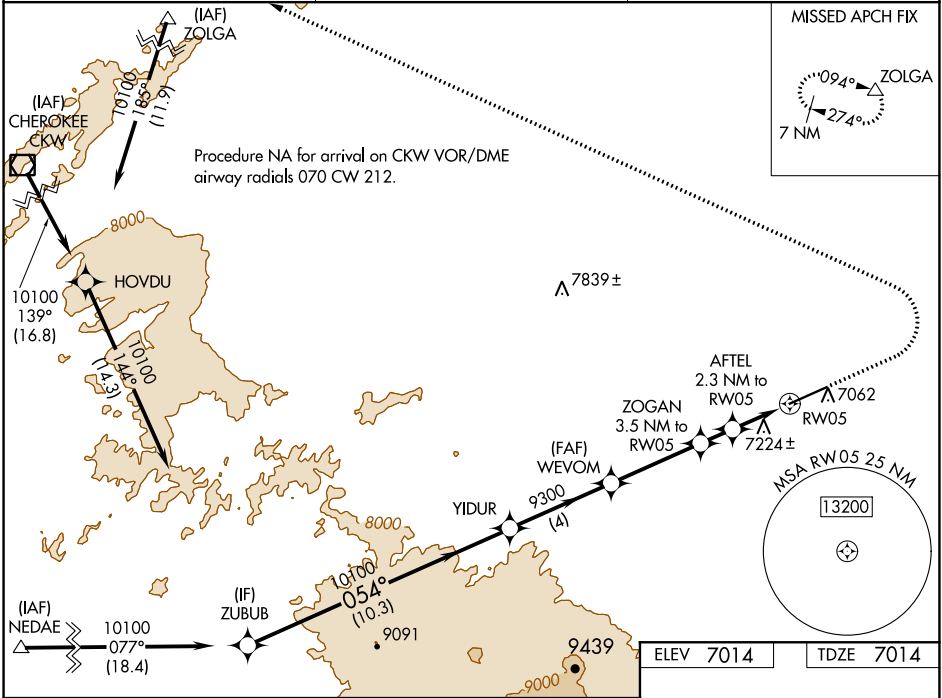
SHIVELY FLD (SAA)

RNP APCH - GPS.

▼ For uncompensated Baro-VNAV systems, LNAV/VNAV NA below -28°C or above 54°C.

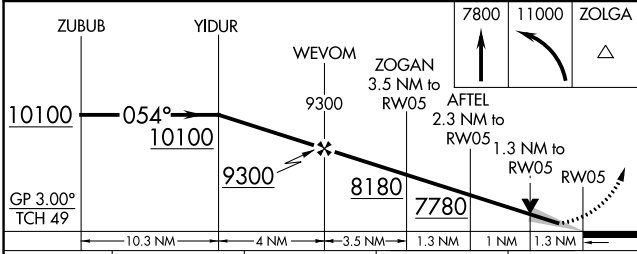
MISSED APPROACH: Climb to 7800 then climbing left turn to 11000 direct ZOLGA and hold.

AWOS-3PT 118.175	DENVER CENTER 132.1 254.35	UNICOM 122.8 (CTAF) 0
----------------------------	--------------------------------------	---------------------------------



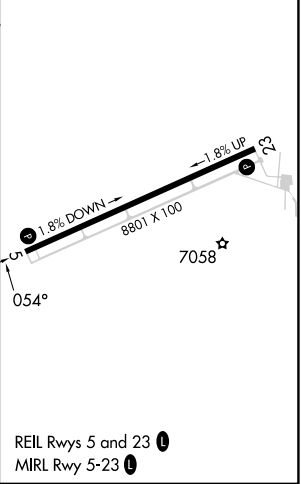
NW-1, 22 FEB 2024 to 21 MAR 2024

NW-1, 22 FEB 2024 to 21 MAR 2024



ELEV 7014	TDZE 7014
-----------	-----------

CATEGORY	A	B	C	D
LPV DA	7264- ³ / ₄		250 (300- ³ / ₄)	
LNAV/VNAV DA	7546-1 ¹ / ₂		532 (600-1 ¹ / ₂)	
LNAV MDA	7480-1 466 (500-1)		7480-1 ³ / ₈ 466 (500-1 ³ / ₈)	
CIRCLING	7540-1 526 (600-1)		7740-2 726 (800-2)	7860-2 ³ / ₄ 846 (900-2 ³ / ₄)



REIL Rwy 5 and 23 0
MIRL Rwy 5-23 0