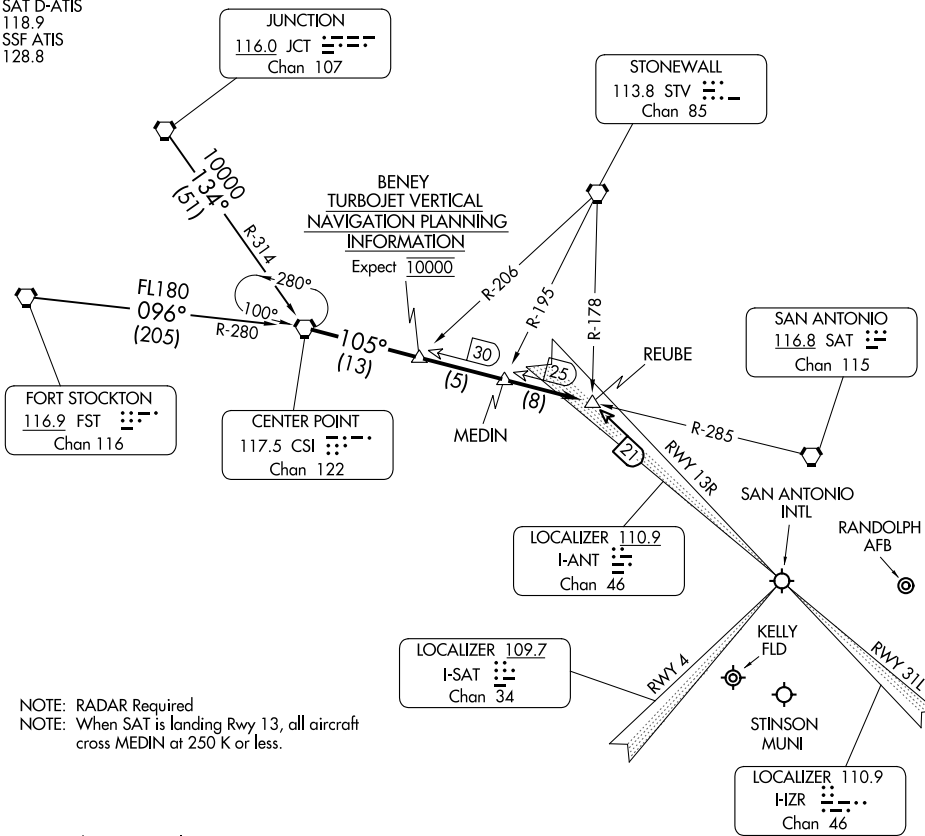


CENTERPOINT TWO ARRIVAL

SAN ANTONIO, TEXAS

SAN ANTONIO APP CON
 125.1 307.0 (Rwys 13R and 22)
 125.7 290.225 (Rwys 4 and 31L)
 KRND ATIS ★
 290.525
 KSKF ATIS
 120.45 273.5
 SAT D-ATIS
 118.9
 SSF ATIS
 128.8



SC-3, 22 FEB 2024 to 21 MAR 2024

SC-3, 22 FEB 2024 to 21 MAR 2024

NOTE: RADAR Required
 NOTE: When SAT is landing Rwy 13, all aircraft cross MEDIN at 250 K or less.

NOTE: Chart not to scale.

ARRIVAL ROUTE DESCRIPTION

FORT STOCKTON TRANSITION (FST.CSI2): From over FST VORTAC via FST R-096 and CSI R-280 to CSI VORTAC. Thence

JUNCTION TRANSITION (JCT.CSI2): From over JCT VORTAC via JCT R-134 and CSI R-314 to CSI VORTAC. Thence

. . . . From over CSI VORTAC on CSI R-105 to REUBE INT. Expect vectors to final approach course.

CENTERPOINT TWO ARRIVAL

SAN ANTONIO, TEXAS

RNAV 1 - DME/DME/IRU or GPS.

RADAR required.

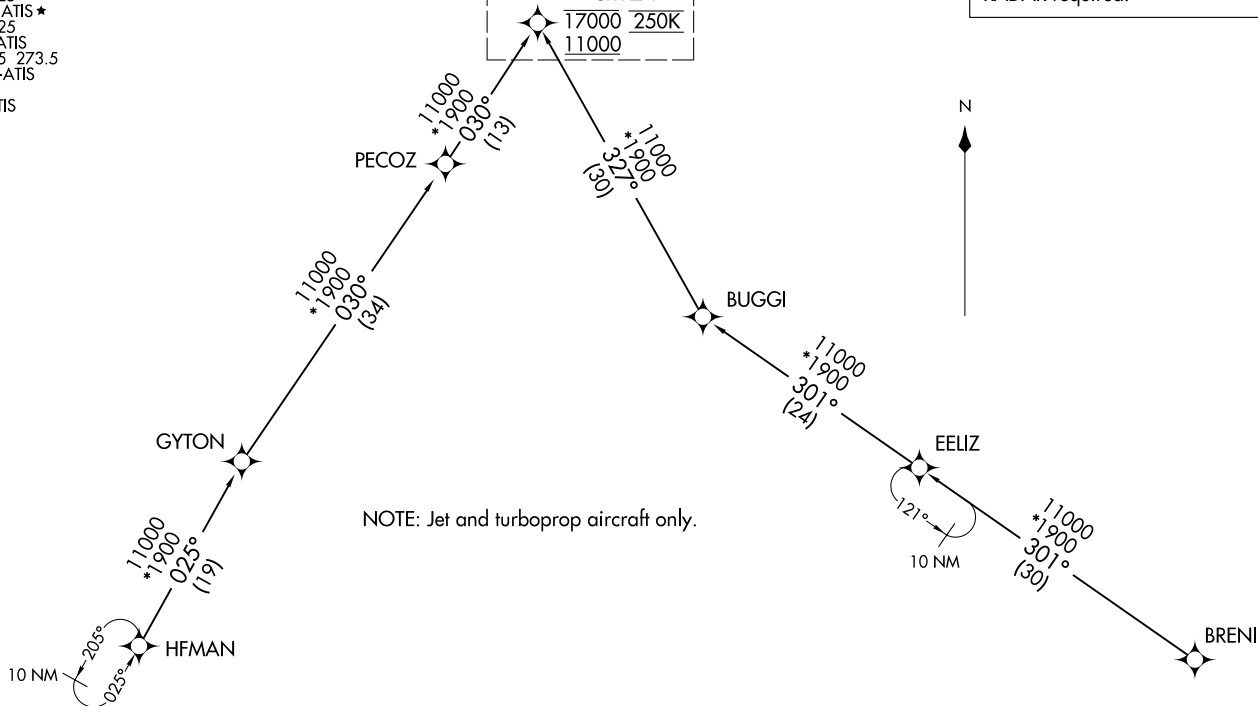
See following page for Arrival Routes	
CRVZA	
17000	250K
11000	

(CRVZA, CRVZA1) 24025
AL-369 (FAA)
CRVZA ONE ARRIVAL (RNAV) Transition Routes

SAN ANTONIO, TEXAS



NOTE: Jet and turboprop aircraft only.



SAN ANTONIO APP CON
125.7 290.225
BAZ ATIS
119.325
KRND ATIS ★
290.525
KSKF ATIS
120.45 273.5
SAT D-ATIS
118.9
SSF ATIS
128.8

BRENI TRANSITION (BRENI.CRVZA1)
EELIZ TRANSITION (EELIZ.CRVZA1)
HFMAN TRANSITION (HFMAN.CRVZA1)

(CONTINUED ON FOLLOWING PAGE)

NOTE: Chart not to scale.

CRVZA ONE ARRIVAL (RNAV) Transition Routes
(CRVZA, CRVZA1) 25JAN24

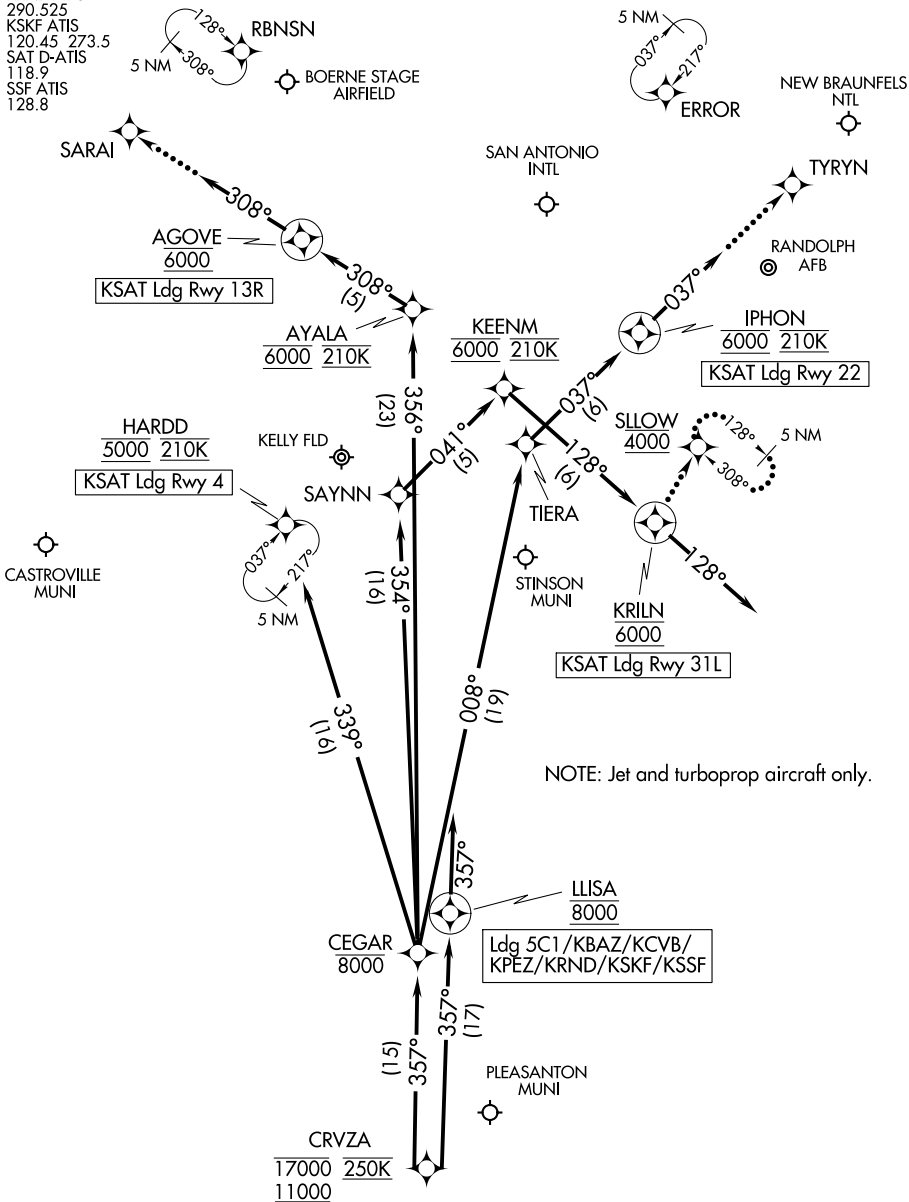
SAN ANTONIO, TEXAS

CRVZA ONE ARRIVAL (RNAV) Arrival Routes

SAN ANTONIO, TEXAS

SAN ANTONIO APP CON
 125.7 290.225
 BAZ ATIS
 119.325
 KRND ATIS ★
 290.525
 KSKF ATIS
 120.45 273.5
 SAT D-ATIS
 118.9
 SSF ATIS
 128.8

RNAV 1 - DME/DME/IRU or GPS.
 RADAR required.



NOTE: Jet and turboprop aircraft only.

NOTE: Chart not to scale.

(CONTINUED ON FOLLOWING PAGE)

ARRIVAL ROUTE DESCRIPTION

SAN ANTONIO INTL (KSAT): From CRVZA on track 357° to cross CEGAR at or below 8000.

LANDING KSAT RUNWAY 4: From CEGAR on track 339° to cross HARDD at 5000 and at 210K. Expect ILS or LOC RWY 4 approach.

LANDING KSAT RUNWAY 13R: From CEGAR on track 356° to cross AYALA at 6000 and at 210K, then on track 308° to cross AGOVE at 6000, then on track 308°. Expect RADAR vectors to final approach course.

LANDING KSAT RUNWAY 22: From CEGAR on track 008° to TIERA, then on track 037° to cross IPHON at 6000 and at 210K, then on track 037°. Expect RADAR vectors to final approach course.

LANDING KSAT RUNWAY 31L: From CEGAR on track 354° to SAYNN, then on track 041° to cross KEENM at 6000 and at 210K, then on track 128° to cross KRILN at 6000, then on track 128°. Expect RADAR vectors to final approach course.

LANDING KSKF/KBAZ/KCVB/KSSF/KPEZ/5C1/KRND: From CRVZA on track 357° to cross LLISA at 8000, then on track 357°. Expect RADAR vectors to final approach course.

LOST COMMUNICATIONS

KSAT RUNWAY 13R: After AGOVE proceed to SARAI, then on ILS or LOC RWY 13R or RNAV (GPS) Y RWY 13R approach.

KSAT RUNWAY 22: After IPHON proceed to TYRYN, then on RNAV (GPS) Y RWY 22 approach.

KSAT RUNWAY 31L: After KRILN proceed to SLOW at 4000 and hold.

SC-3, 22 FEB 2024 to 21 MAR 2024

SC-3, 22 FEB 2024 to 21 MAR 2024

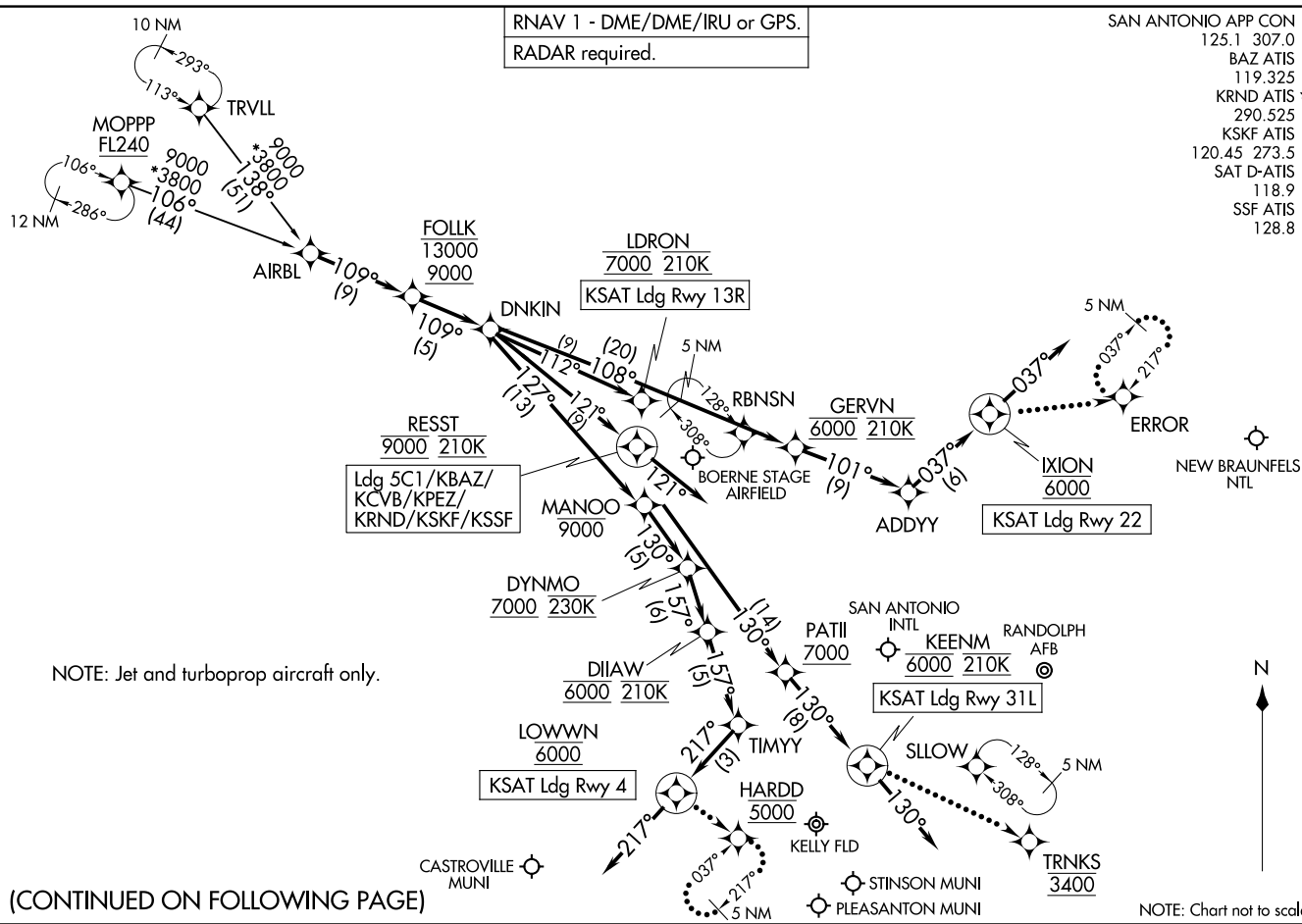
(AIRBL.DNKINI) 251AN24

DNKIN ONE ARRIVAL (RNAV)

(AIRBL.DNKINI) 24025
DNKIN ONE ARRIVAL (RNAV)

AL-369 (FAA)

SAN ANTONIO, TEXAS



(CONTINUED ON FOLLOWING PAGE)

SAN ANTONIO, TEXAS

ARRIVAL ROUTE DESCRIPTION

SAN ANTONIO INTL (KSAT):

From AIRBL on track 109° to cross FOLLK between 9000 and 13000, then on track 109° to DNKIN.

LANDING KSAT RUNWAY 4: From DNKIN on track 127° to cross MANOO at or below 9000, then on track 130° to cross DYNMO at or above 7000 and at 230K, then on track 157° to cross DIIAW at 6000 and at 210K, then on track 157° to TIMYY, then on track 217° to cross LOWWN at 6000, then on track 217°. Expect RADAR vectors to final approach course.

LANDING KSAT RUNWAY 13R: From DNKIN on track 112° to cross LDRON at 7000 and at 210K. Expect ILS or LOC Rwy 13R approach.

LANDING KSAT RUNWAY 22: From DNKIN on track 108° to cross GERVN at 6000 and at 210K, then on track 101° to ADDYY, then on track 037° to cross IXION at 6000, then on track 037°. Expect RADAR vectors to final approach course.

LANDING KSAT RUNWAY 31L: From DNKIN on track 127° to cross MANOO at or below 9000, then on track 130° to cross PATII at or above 7000, then on track 130° to cross KEENM at 6000 and at 210K, then on track 130°. Expect RADAR vectors to final approach course.

LANDING KSKF, KBAZ, KCVB, KSSF, KPEZ, 5C1, KRND: From AIRBL on track 109° to cross FOLLK between 9000 and 13000, then on track 109° to DNKIN, then on track 121° to cross RESST at 9000 and at 210K, then on track 121°. Expect RADAR vectors to final approach course.

LOST COMMUNICATIONS

RUNWAY 4: After LOWWN, proceed to HARDD at 5000 and hold.

RUNWAY 22: After IXION, proceed direct to ERROR and hold.

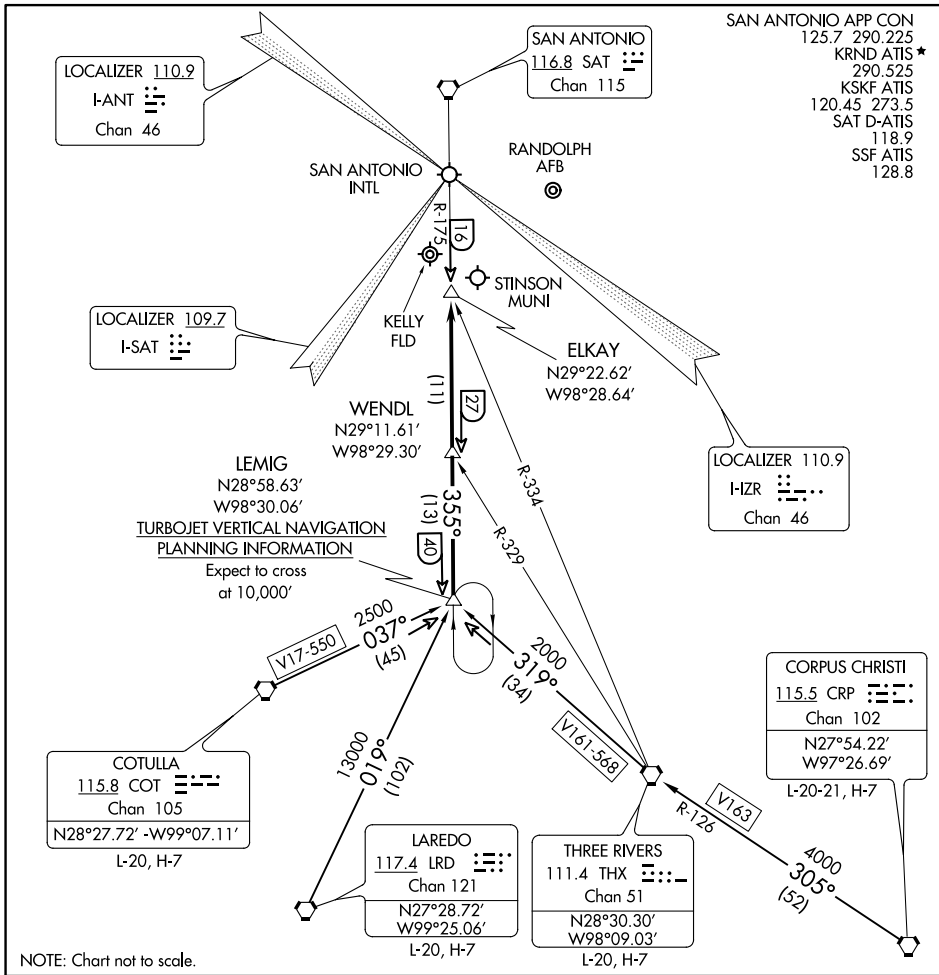
RUNWAY 31L: After KEENM proceed to TRNKS at 3400, then on ILS or LOC Rwy 31L or RNAV (GPS) Y Rwy 31L approach.

SC-3, 22 FEB 2024 to 21 MAR 2024

SC-3, 22 FEB 2024 to 21 MAR 2024

LEMIG ONE ARRIVAL

SAN ANTONIO, TEXAS



ARRIVAL ROUTE DESCRIPTION

CORPUS CHRISTI TRANSITION (CRP.LEMIG1): From over CRP VORTAC via CRP R-305 and THX R-126 to THX VORTAC, then via THX R-319 to LEMIG INT.

Thence . . .

COTULLA TRANSITION (COT.LEMIG1): From over COT VORTAC via COT R-037 to LEMIG INT. Thence . . .

LAREDO TRANSITION (LRD.LEMIG1): From over LRD VORTAC via LRD R-019 to LEMIG INT. Thence . . .

THREE RIVERS TRANSITION (THX.LEMIG1): From over THX VORTAC via THX R-319 to LEMIG INT. Thence . . .

. . . **ALL AIRPORTS:** From over LEMIG INT via SAT R-175 to ELKAY INT. Expect radar vectors to final approach course.

LEMIG ONE ARRIVAL

SAN ANTONIO, TEXAS

MARCS ONE ARRIVAL

SAN ANTONIO, TEXAS

SAN ANTONIO APP CON

127.1 269.1
 KRND ATIS★
 290.525
 KSKF ATIS
 120.45 273.5
 SAT D-ATIS
 118.9
 SSF ATIS
 128.8

WACO
 115.3 ACT
 Chan 100
 N 31°39.74' - W 97°16.14'
 L-19, H-6

MAVERICK
 113.1 TTT
 Chan 78

GOOCH SPRINGS
 112.5 AGJ
 Chan 72

BLEWE
 N31°12.46'
 W97°12.54'

WINDU
 N31°31.83'
 W97°04.95'
 L-19, H-6

MARCS
 N29°53.87'
 W97°51.68'
 L-15, H-7
 TURBOJET VERTICAL
 NAVIGATION PLANNING
 INFORMATION
 Expect 13000

LUFKIN
 112.1 LFK
 Chan 58
 N31°09.75'-W94°43.01'
 L-19-21, H-6

CENTEX
 112.8 CWK
 Chan 75
 N30°22.71'-W97°31.79'
 L-19-21, H-7

STONEWALL
 113.8 STV
 Chan 85

INDUSTRY
 110.2 IDU
 Chan 39
 N29°57.36'-W96°33.73'
 L-19-21, H-7

LOCALIZER 110.9
 I-ANT
 Chan 46

TROOP
 N29°40.84'
 W98°22.52'

BRAUN
 N29°48.77'
 W98°03.79'

CRAYS
 N29°55.11'
 W97°25.99'

SAN ANTONIO
 116.8 SAT
 Chan 115

NOTE: RADAR required.

RWY 13R

RWY 4

KELLY FLD

STINSON MUNI

RWY 31L

LOCALIZER 109.7
 I-SAT
 Chan 46

LOCALIZER 110.9
 I-HZ
 Chan 46

(NARRATIVE ON FOLLOWING PAGE)

NOTE: Chart not to scale

MARCS ONE ARRIVAL

SAN ANTONIO, TEXAS

SC-3, 22 FEB 2024 to 21 MAR 2024

SC-3, 22 FEB 2024 to 21 MAR 2024

ARRIVAL ROUTE DESCRIPTION

CENTEX TRANSITION (CWK.MARCS1): From over CWK VORTAC via CWK R-205 to MARCS INT. Thence. . . .

INDUSTRY TRANSITION (IDU.MARCS1): From over IDU VORTAC via IDU R-259 to MARCS INT. Thence. . . .

LUFKIN TRANSITION (LFK.MARCS1): From over LFK VORTAC via LFK R-228 and IDU R-044 to IDU VORTAC, then via IDU R-259 to MARCS INT. Thence. . . .

WACO TRANSITION (ACT.MARCS1): From over ACT VORTAC via ACT R-165 to BLEWE INT, then via CWK R-012 to CWK VORTAC, then via CWK R-205 to MARCS INT. Thence. . . .

WINDU TRANSITION (WINDU.MARCS1): From over WINDU INT via CWK R-012 to CWK VORTAC, then via CWK R-205 to MARCS INT. Thence. . . .

. . . . From over MARCS on SAT R-056 to BRAUN, then on SAT R-056 to TROOP. Thence....

SAN ANTONIO INTL (SAT):

LANDING RWY 13R: On SAT R-056 to CRISS. Depart CRISS heading 300° for vectors to final approach course.

LANDING RWY 31L: Depart TROOP heading 140° for vectors to final approach course.

LANDING ALL OTHER RUNWAYS: On SAT R-056 to CRISS. Expect vectors to final approach course.

ALL OTHER AIRPORTS: On SAT R-056 to CRISS. Expect vectors to final approach course.

SC-3, 22 FEB 2024 to 21 MAR 2024

SC-3, 22 FEB 2024 to 21 MAR 2024

POPPO ONE ARRIVAL (RNAV) Transition Routes

SAN ANTONIO, TEXAS

RNAV 1 - DME/DME/IRU or GPS.

RADAR required.

SAN ANTONIO APP CON
 125.1 307.0
 BAZ ATIS
 119.325
 KRND ATIS*
 290.525
 KSKF ATIS
 120.45 273.5
 SAT D-ATIS
 118.9
 SSF ATIS
 128.8

NOTE: Jet and turboprop aircraft only.

PRTZY

9000
 *3700
 154°
 (176)

MUGSY

9000
 *3700
 154°
 (271)

11 NM

PPNUT
FL220

DILLO
FL220

9000
 *3700
 172°
 (411)

10 NM

293°
 113°

TRVLL

9000
 *3700
 113°
 (63)

POPPO
 10000

See following page for arrival routes

DILLO TRANSITION (DILLO.POPPO1)

PPNUT TRANSITION (PPNUT.POPPO1)

PRTZY TRANSITION (PRTZY.POPPO1)

TRVLL TRANSITION (TRVLL.POPPO1)

NOTE: Chart not to scale.

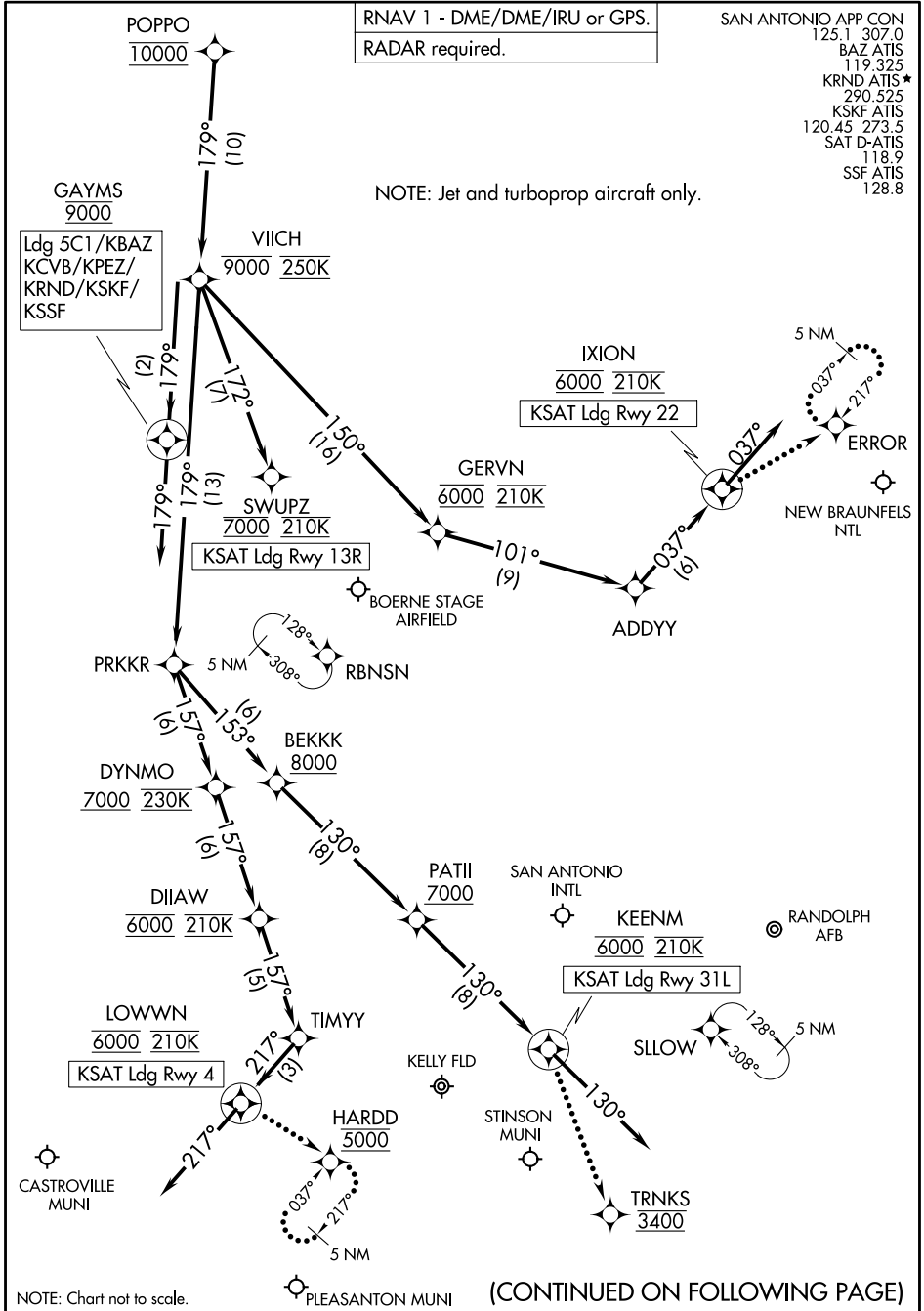
(CONTINUED ON FOLLOWING PAGE)

POPPO ONE ARRIVAL (RNAV) Transition Routes

SAN ANTONIO, TEXAS

POPPO ONE ARRIVAL (RNAV) Arrival Routes

SAN ANTONIO, TEXAS



SC-3, 22 FEB 2024 to 21 MAR 2024

SC-3, 22 FEB 2024 to 21 MAR 2024

POPPO ONE ARRIVAL (RNAV) Arrival Routes

SAN ANTONIO, TEXAS

ARRIVAL ROUTE DESCRIPTION

SAN ANTONIO INTL (KSAT): From POPPO on track 179° to cross VIICH at or below 9000 and at 250K.

LANDING KSAT RUNWAY 4: From VIICH on track 179° to PRKKR, then on track 157° to cross DYNMO at or above 7000 and at 230K, then on track 157° to cross DIIAW at 6000 and at 210K, then on track 157° to TIMYY, then on track 217° to cross LOWWN at 6000 and at 210K, then on track 217°. Expect RADAR vectors to final approach course.

LANDING KSAT RUNWAY 13R: From VIICH on track 172° to cross SWUPZ at 7000 and at 210K. Expect ILS or LOC RWY 13R approach.

LANDING KSAT RUNWAY 22: From VIICH on track 150° to cross GERVN at 6000 and at 210K, then on track 101° to ADDYY, then on track 037° to cross IXION at 6000 and at 210K, then on track 037°. Expect RADAR vectors to final approach course.

LANDING KSAT RUNWAY 31L: From VIICH on track 179° to PRKKR, then on track 153° to cross BEKKK at or above 8000, then on track 130° to cross PATII at or above 7000, then on track 130° to cross KEENM at 6000 and at 210K, then on track 130°. Expect RADAR vectors to final approach course.

LANDING KSKF/KBAZ/KCVB/KSSF/KPEZ/5C1/KRND: From POPPO on track 179° to cross VIICH at or below 9000 and at 250K, then on track 179° to cross GAYMS at 9000, then on track 179°. Expect RADAR vectors to final approach course.

LOST COMMUNICATIONS

KSAT RUNWAY 4: After LOWWN proceed to HARDD at 5000 and hold.

KSAT RUNWAY 22: After IXION proceed to ERROR and hold.

KSAT RUNWAY 31L: After KEENM proceed to TRNKS at 3400, then on ILS or LOC Rwy 31L or RNAV (GPS) Y Rwy 31L approach.

SC-3, 22 FEB 2024 to 21 MAR 2024

SC-3, 22 FEB 2024 to 21 MAR 2024

(MARC'S, QERVO1) 25JAN24

QERVO ONE ARRIVAL (RNAV) Transition Routes

SAN ANTONIO, TEXAS

SAN ANTONIO APP CON
127.1 269.1
BAZ ATIS
119.325
KRND ATIS *
290.525
KSKF ATIS
120.45 273.5
SAT D-ATIS
118.9
SSF ATIS
128.8

RNAV 1-DME/DME/IRU or GPS.
RADAR required.

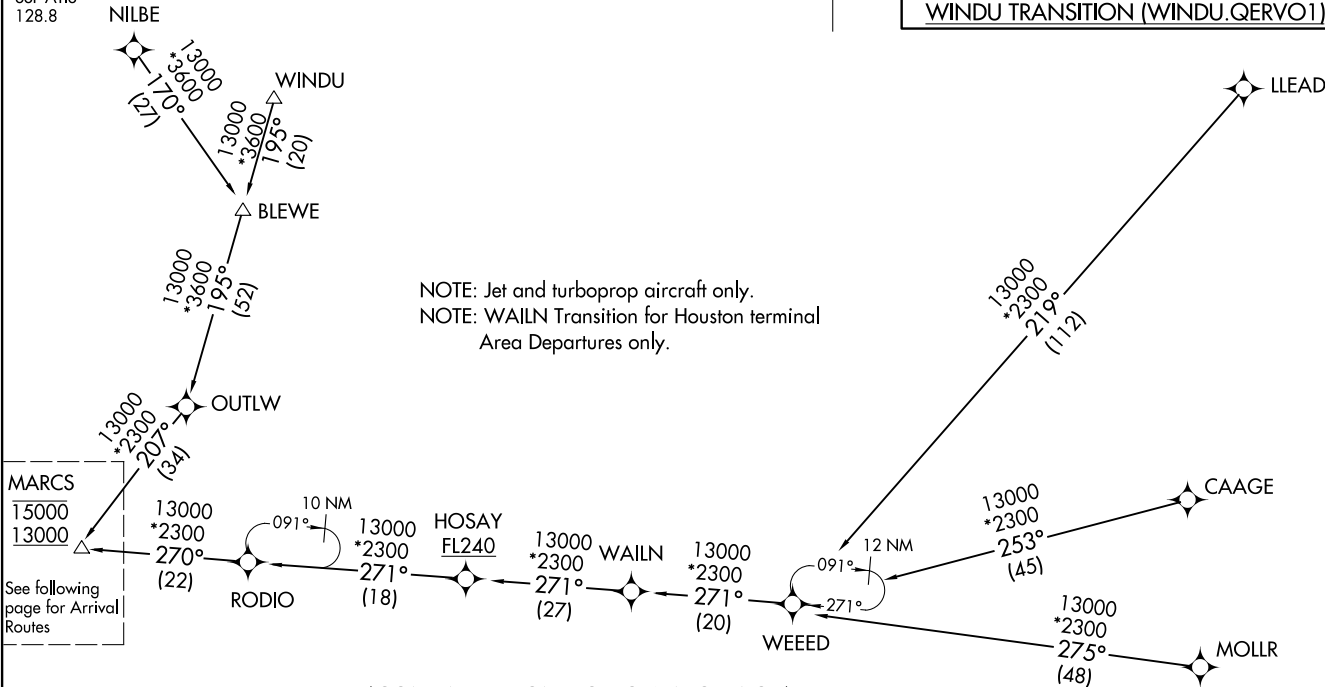


BLEWE TRANSITION (BLEWE.QERVO1)
CAAGE TRANSITION (CAAGE.QERVO1)
LLEAD TRANSITION (LLEAD.QERVO1)
MOLLR TRANSITION (MOLLR.QERVO1)
NILBE TRANSITION (NILBE.QERVO1)
WAILN TRANSITION (WAILN.QERVO1)
WINDU TRANSITION (WINDU.QERVO1)

(MARC'S, QERVO1) 24025

AL-369 (FAA)
QERVO ONE ARRIVAL (RNAV) Transition Routes

SAN ANTONIO, TEXAS



NOTE: Jet and turboprop aircraft only.
NOTE: WAILN Transition for Houston terminal Area Departures only.

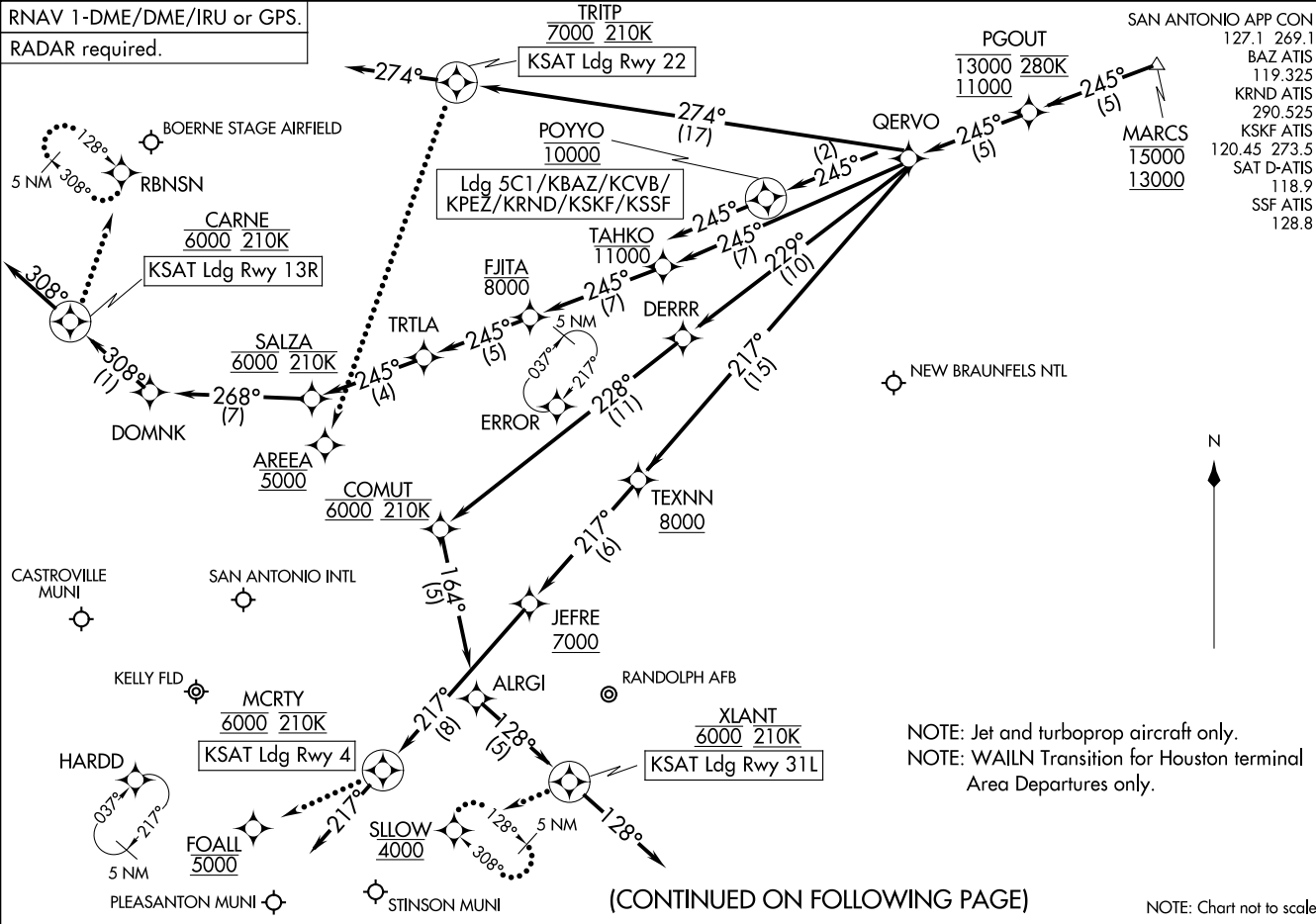
See following page for Arrival Routes

NOTE: Chart not to scale.

(CONTINUED ON FOLLOWING PAGE)

QERVO ONE ARRIVAL (RNAV) Arrival Routes
(MARC3, QERVO1) 25JAN24

RNAV 1-DME/DME/IRU or GPS.
RADAR required.



(MARC3, QERVO1) 24025
QERVO ONE ARRIVAL (RNAV) Arrival Routes

AL-369 (FAA)

SAN ANTONIO, TEXAS

(CONTINUED ON FOLLOWING PAGE)

NOTE: Chart not to scale.

ARRIVAL ROUTE DESCRIPTION

SAN ANTONIO INTL (KSAT): From MARCS on track 245° to cross PGOUT between 11000 and 13000 and at 280K, then on track 245° to QERVO.

LANDING KSAT RUNWAY 4: From QERVO on track 217° to cross TEXNN at or above 8000, then on track 217° to cross JEFRE at or above 7000, then on track 217° to cross MCRTY at 6000 and at 210K, then on track 217°. Expect RADAR vectors to final approach course.

LANDING KSAT RUNWAY 13R: From QERVO on track 245° to cross TAHKO at or below 11000, then on track 245° to cross FJITA at or below 8000, then on track 245° to TRTLA, then on track 246° to cross SALZA at 6000 and at 210K, then on track 268° to DOMNK, then on track 308° to cross CARNE at 6000 and at 210K, then on track 308°. Expect RADAR vectors to final approach course.

LANDING KSAT RUNWAY 22: From QERVO on track 274° to cross TRITP at 7000 and at 210K, then on track 274°. Expect RADAR vectors to final approach course.

LANDING KSAT RUNWAY 31L: From QERVO on track 229° to DERRR, then on track 228° to cross COMUT at 6000 and at 210K, then on track 164° to ALRGI, then on track 128° to cross XLANT at 6000 and at 210K, then on track 128°. Expect RADAR vectors to final approach course.

LANDING KSKF/KBAZ/KCVB/KSSF/KPEZ/5C1/KRND: From MARCS on track 245° to cross PGOUT between 11000 and 13000 and at 280K, then on track 245° to QERVO, then on track 245° to cross POYYO at 10000, then on track 245°. Expect RADAR vectors to final approach course.

LOST COMMUNICATIONS:

KSAT RUNWAY 4: After MCRTY, proceed to FOALL at 5000, then on ILS or LOC RWY 4 or RNAV (GPS) Y RWY 4 approach.

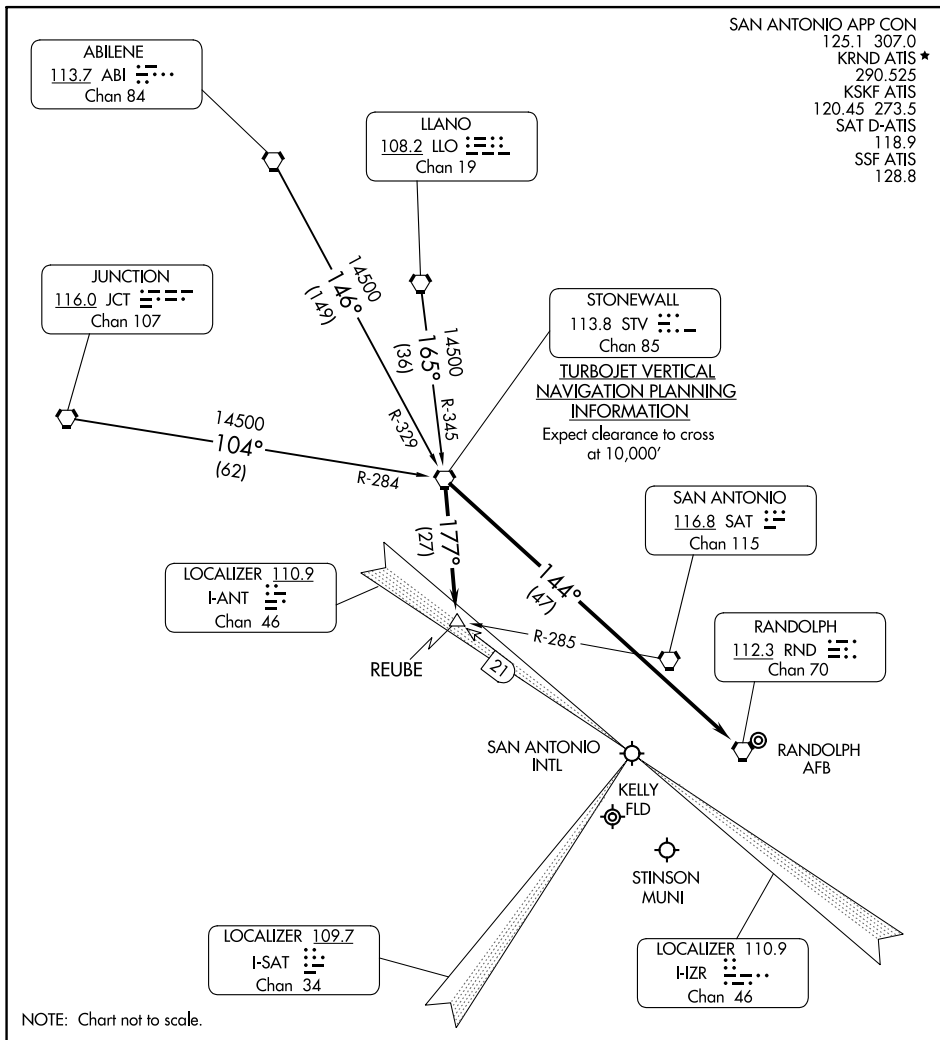
KSAT RUNWAY 13R: After CARNE, proceed to RBNSN and hold.

KSAT RUNWAY 22: After TRITP proceed to AREEA at 5000, then on RNAV (GPS) Y RWY 22 approach.

KSAT RUNWAY 31L: After XLANT, proceed to SLOW at 4000 and hold.

STONEWALL ONE ARRIVAL

SAN ANTONIO, TEXAS



SC-3, 22 FEB 2024 to 21 MAR 2024

SC-3, 22 FEB 2024 to 21 MAR 2024

ARRIVAL ROUTE DESCRIPTION

ABILENE TRANSITION (ABI.STV1): From over ABI VORTAC via ABI R-146 and STV R-329 to STV VORTAC. Thence

JUNCTION TRANSITION (JCT.STV1): From over JCT VORTAC via JCT R-104 and STV R-284 to STV VORTAC. Thence

LLANO TRANSITION (LLO.STV1): From over LLO VORTAC via LLO R-165 and STV R-345 to STV VORTAC. Thence

ALL AIRPORTS EXCEPT RANDOLPH AIR FORCE BASE: From over STV VORTAC via STV R-177 to REUBE INT. Expect radar vectors to final approach course.

RANDOLPH AIR FORCE BASE: From over STV VORTAC via direct RND VORTAC.

STONEWALL ONE ARRIVAL

SAN ANTONIO, TEXAS