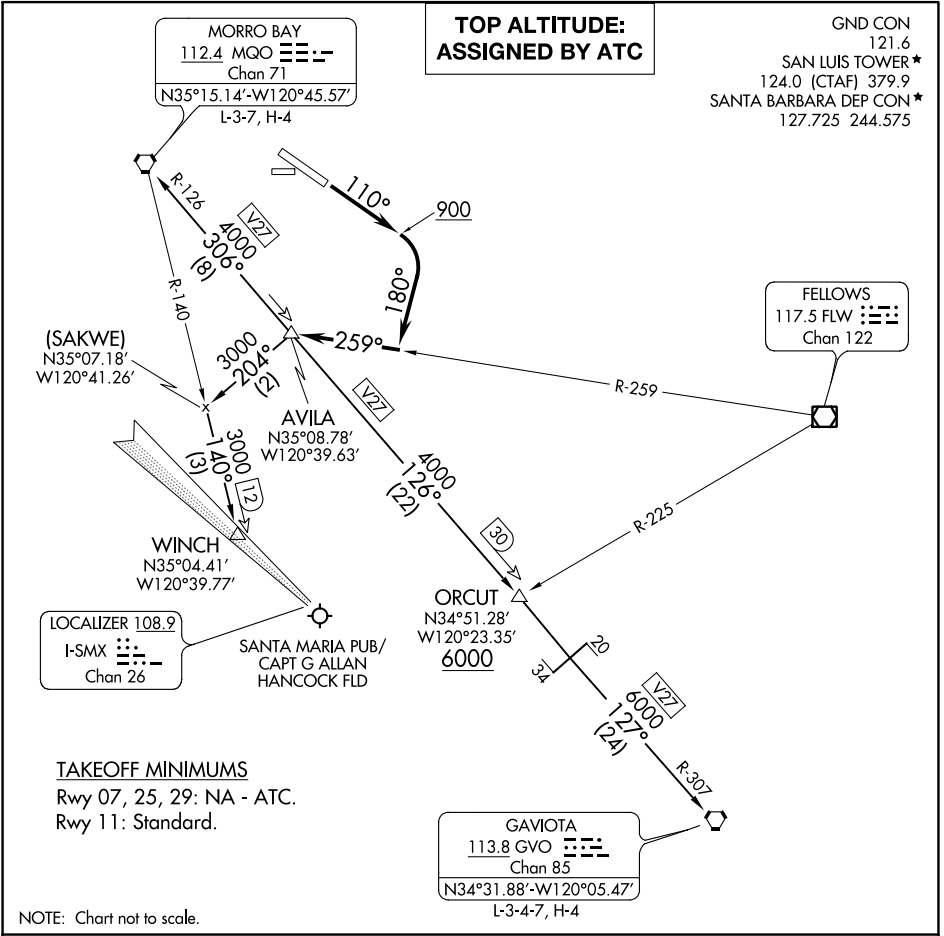


AVILA FOUR DEPARTURE

AL-989 (FAA)

SAN LUIS COUNTY RGNL (SBP)
SAN LUIS OBISPO, CALIFORNIA



**TOP ALTITUDE:
ASSIGNED BY ATC**

GND CON 121.6
SAN LUIS TOWER* 124.0 (CTAF) 379.9
SANTA BARBARA DEP CON* 127.725 244.575

TAKEOFF MINIMUMS

Rwy 07, 25, 29: NA - ATC.
Rwy 11: Standard.

NOTE: Chart not to scale.



DEPARTURE ROUTE DESCRIPTION

TAKEOFF RUNWAY 11: Climb on heading 110° to 900, then climbing right turn heading 180° to intercept the FLW VOR/DME R-259 to AVILA INT, then on assigned transition or assigned route. Maintain ATC assigned altitude.

GAVIOTA TRANSITION (AVILA4.GVO): From over AVILA on MQO R-126 to ORCUT, then on MQO R-126 and GVO R-307 to GVO VORTAC.

MORRO BAY TRANSITION (AVILA4.MQO): From over AVILA on MQO R-126 to MQO VORTAC.

WINCH TRANSITION (AVILA4.WINCH): From over AVILA on heading 204° to SAKWE, then on MQO R-140 to WINCH.

SW-3, 07 OCT 2021 to 04 NOV 2021

SW-3, 07 OCT 2021 to 04 NOV 2021

(CREPE3.CREPE) 16091

CREPE THREE DEPARTURE

SL-989 (FAA)

SAN LUIS COUNTY RGNL (SBP)

SAN LUIS OBISPO, CALIFORNIA

GND CON

121.6

SAN LUIS TOWER *

124.0 (CTAF) 379.9

SANTA BARBARA DEP CON *

127.725 244.575

PASO ROBLES

114.3 PRB

Chan 90

N35°40.35'-W120°37.63'

L-3-7

BIG SUR

114.0 BSR

Chan 87

BLANC

N35°37.89'

W121°21.38'

L-3

(RUGTY)

N35°23.58'

W120°54.79'

FRAMS

N35°22.03'

W120°56.36'

L-3-7

CREPE

N35°21.85'

W120°51.86'

*Aprx dist fr
T/off area

(SOJSU)

N35°17.37'

W120°55.12'

LOCALIZER 109.7

I-SBP

MORRO BAY

112.4 MQO

Chan 71

N35°15.14'-W120°45.57'

L-3-7, H-4

NOTE: This SID requires take off minimums of 1300-2 or standard with a minimum climb of 275' per NM to 1700.

NOTE: During VFR conditions watch for opposing traffic on localizer course.

NOTE: This procedure applicable to Runway 29 departures only.

NOTE: Chart not to scale.

DEPARTURE ROUTE DESCRIPTION

TAKEOFF RUNWAY 29: Climb via San Luis Obispo localizer I-SBP west course to CREPE INT; thence via (transition) or (assigned route).

FRAMS TRANSITION (CREPE3.FRAMS): From over CREPE INT via I-SBP LOC west course and PRB R-204 to FRAMS INT.

MORRO BAY TRANSITION (CREPE3.MQO): From over CREPE INT via PRB R-196 and MQO R-270 to MQO VORTAC.

PASO ROBLES TRANSITION (CREPE3.PRB): From over CREPE INT via PRB R-196 to PRB VORTAC.

CREPE THREE DEPARTURE

(CREPE3.CREPE) 30JUL87

SAN LUIS OBISPO, CALIFORNIA
SAN LUIS COUNTY RGNL (SBP)

SW-3, 07 OCT 2021 to 04 NOV 2021

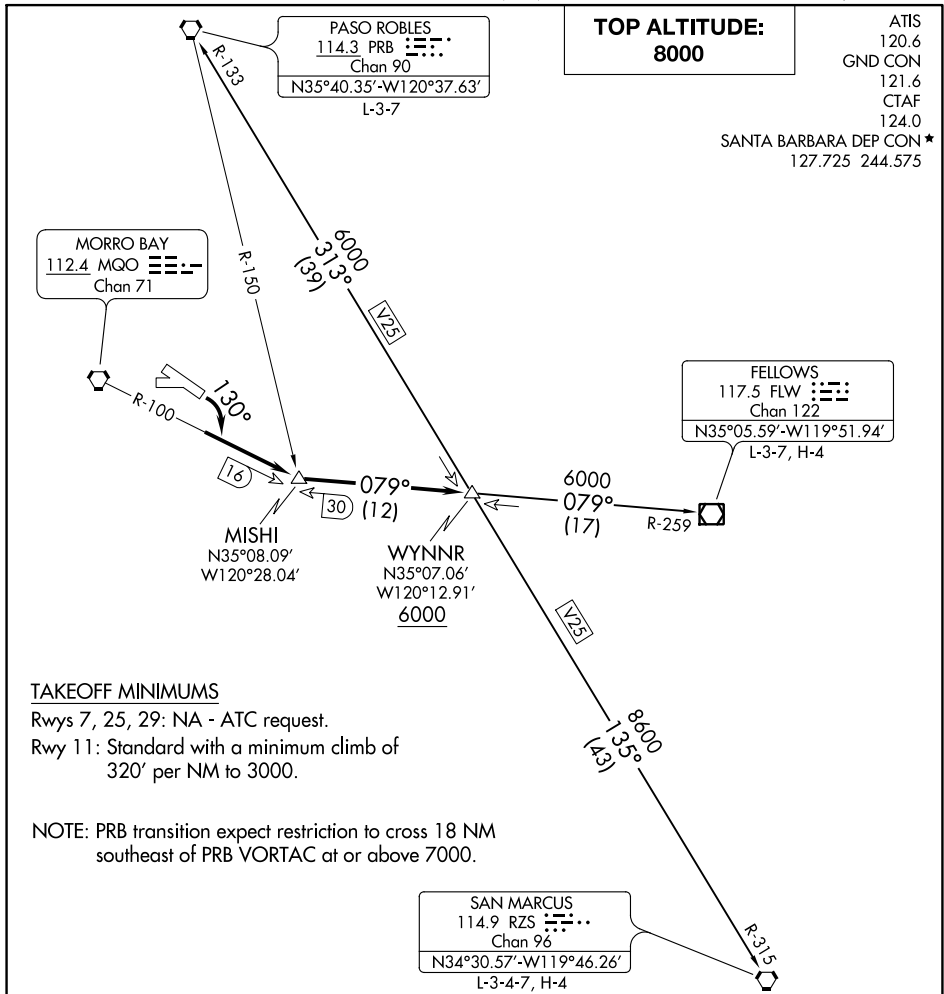
SW-3, 07 OCT 2021 to 04 NOV 2021

WYNNR FOUR DEPARTURE

AL-989 (FAA)

SAN LUIS COUNTY RGNL (SBP)

SAN LUIS OBISPO, CALIFORNIA



**TOP ALTITUDE:
8000**

ATIS 120.6
 GND CON 121.6
 CTAF 124.0
 SANTA BARBARA DEP CON ★ 127.725 244.575

TAKEOFF MINIMUMS

Rwy 7, 25, 29: NA - ATC request.
 Rwy 11: Standard with a minimum climb of 320' per NM to 3000.

NOTE: PRB transition expect restriction to cross 18 NM southeast of PRB VORTAC at or above 7000.

SAN MARCUS
 114.9 RZS
 Chan 96
 N34°30.57'-W119°46.26'
 L-3-4-7, H-4

DEPARTURE ROUTE DESCRIPTION

TAKEOFF RUNWAY 11: Turn right heading 130° to intercept and proceed on MQO R-100 to MISHI INT, then on FLW R-259 to WYNNR INT; thence on (transition) or (assigned route.)

FELLOWS TRANSITION (WYNNR4.FLW): From over WYNNR INT on FLW R-259 to FLW VOR/DME.

PASO ROBLES TRANSITION (WYNNR4.PRB): From over WYNNR INT on PRB R-133 to PRB VORTAC.

SAN MARCUS TRANSITION (WYNNR4.RZS): From over WYNNR INT on RZS R-315 to RZS VORTAC.

WYNNR FOUR DEPARTURE

SW-3, 07 OCT 2021 to 04 NOV 2021

SW-3, 07 OCT 2021 to 04 NOV 2021