

WAAS CH 40335 W22A	APP CRS 220°	Rwy Idg 5000 TDZE 615 Apt Elev 615
---------------------------------	------------------------	---

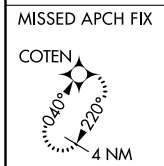
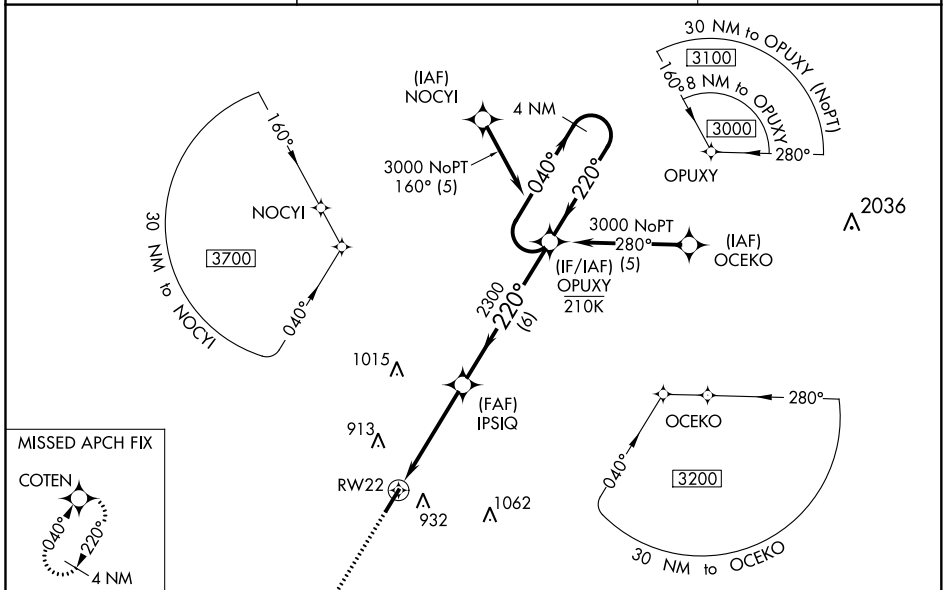
RNAV (GPS) RWY 22

SILER CITY MUNI (SCR)

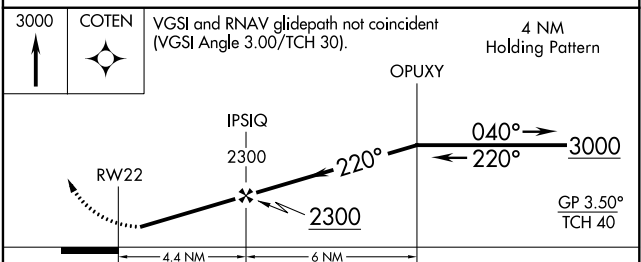
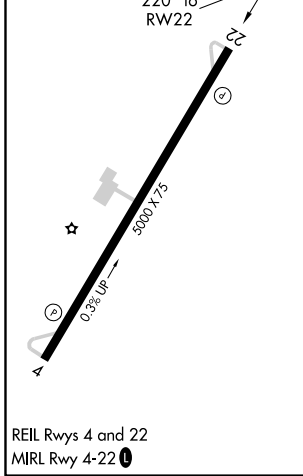
⚠ For uncompensated Baro-VNAV systems, LNAV/VNAV NA below -16°C (4°F) or above 54°C (130°F). DME/DME RNP-0.3 NA. Procedure NA at night. Baro-VNAV NA when using Asheboro altimeter setting. Rwy 4, 22 helicopter visibility reduction below 1 SM NA. When local altimeter setting not received, use Asheboro altimeter setting; increase all DA 53 feet and all MDA 60 feet; increase LPV all Cats, LNAV/VNAV all Cats, and LNAV Cat C visibilities 1/8 mile, increase Circling Cat C visibility 1/4 mile.

MISSED APPROACH: Climb to 3000 direct COTEN and hold.

AWOS-3 125.775	GREENSBORO APP CON 126.6 327.075	UNICOM 122.7 (CTAF) 0
--------------------------	--	---------------------------------



ELEV 615	TDZE 615
-----------------	-----------------



CATEGORY	A	B	C	D
LPV DA	954-1 339 (400-1)			NA
LNAV/VNAV DA	1140-1 5/8 525 (600-1 5/8)			NA
LNAV MDA	1160-1 545 (600-1)		1160-1 5/8 545 (600-1 5/8)	NA
C CIRCLING	1240-1 625 (700-1)		1240-1 3/4 625 (700-1 3/4)	NA

SE-2, 05 NOV 2020 to 03 DEC 2020

SE-2, 05 NOV 2020 to 03 DEC 2020

WAAS CH 42935 W04A	APP CRS 040°	Rwy Idg TDZE 605 Apt Elev 615	5000 605 615
--	------------------------	---	---

RNAV (GPS) RWY 4

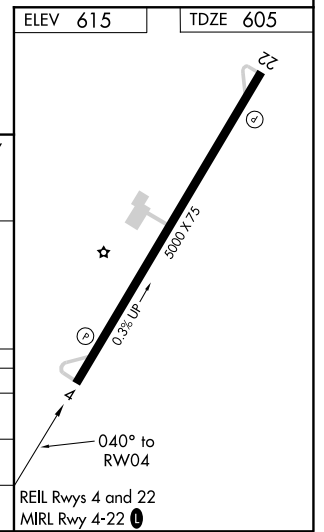
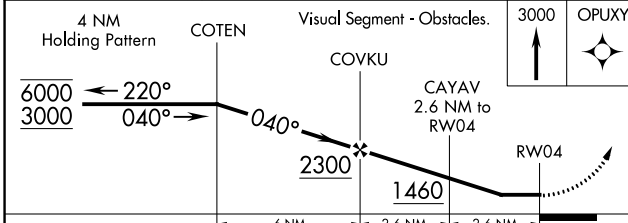
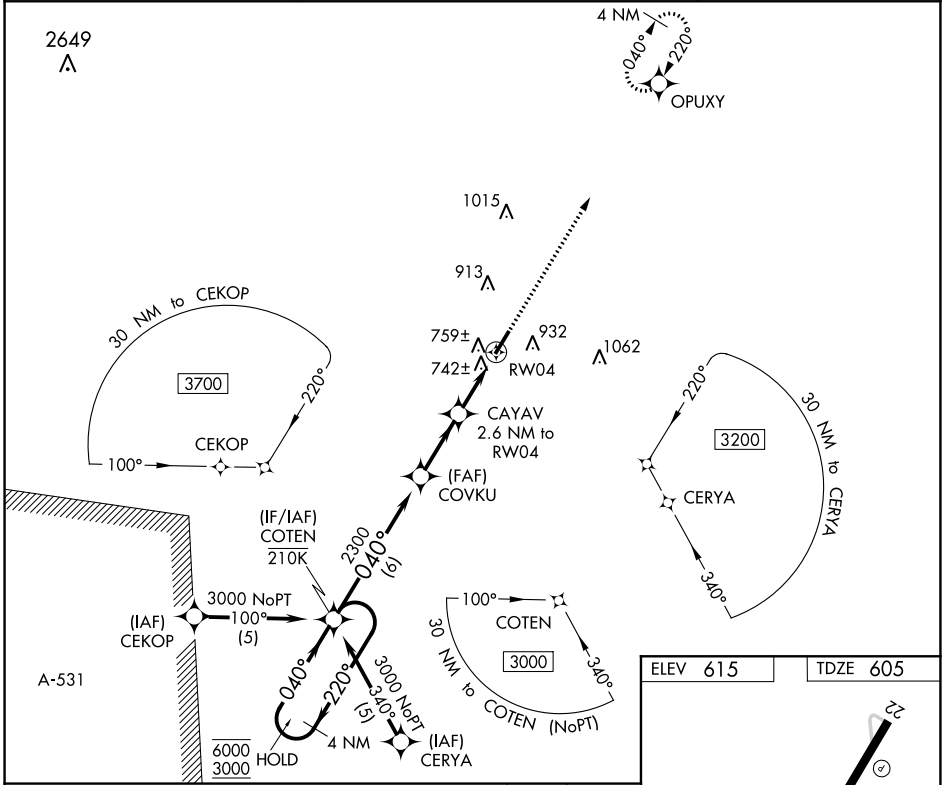
SILER CITY MUNI (SCR)

RNP APCH.

Procedure NA at night. Rwy 4, 22 helicopter visibility reduction below 1 SM NA. When local altimeter setting not received, use Asheboro Rgnl altimeter setting: increase all MDA 60 feet, increase LP and Circling Cat C visibilities 1/4 SM, and increase LNAV Cat C visibility 1/8 SM.

MISSED APPROACH: Climb to 3000 direct OPUXY and hold.

AWOS-3 125.775	GREENSBORO APP CON 126.6 327.075	UNICOM 122.7 (CTAF) 0
--------------------------	--	---------------------------------



CATEGORY	A	B	C	D
LP MDA	1000-1	395 (400-1)	1000-1 1/8 395 (400-1 1/8)	NA
LNAV MDA	1020-1	415 (500-1)	1020-1 1/4 415 (500-1 1/4)	NA
C CIRCLING	1240-1	625 (700-1)	1240-1 3/4 625 (700-1 3/4)	NA

SE-2, 05 NOV 2020 to 03 DEC 2020

SE-2, 05 NOV 2020 to 03 DEC 2020