

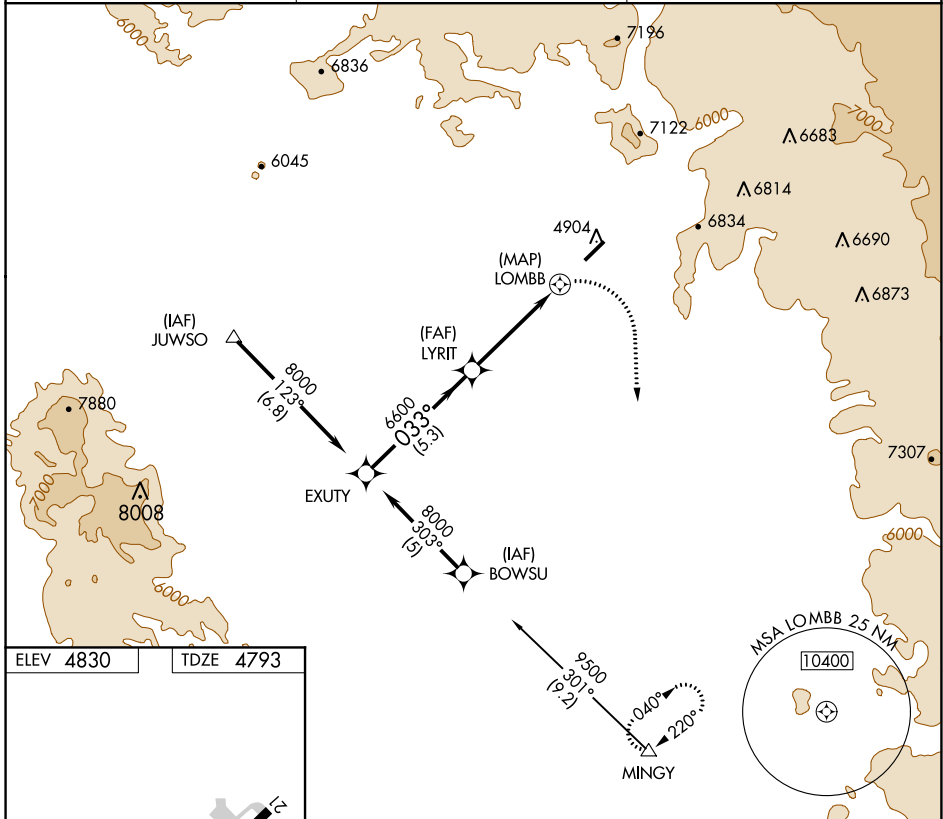
GPS RWY 3 SEDONA (SEZ)

APP CRS	Rwy Idg	5132
033°	TDZE	4793
	Apt Elev	4830

▼ When local altimeter not received, procedure not authorized.
▲ NA Cat D circling not authorized northwest of Rwy 3-21.
 Circling Rwy 21 NA at night.

MISSED APPROACH: Climbing right turn to 12000 direct MINGY WP and hold.

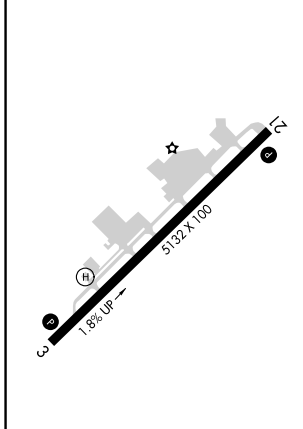
AWOS-3PT 118.525	PHOENIX APP CON 126.375 236.775	UNICOM 123.0 (CTAF)
----------------------------	---	-------------------------------



SW-4, 04 NOV 2021 to 02 DEC 2021

SW-4, 04 NOV 2021 to 02 DEC 2021

ELEV 4830	TDZE 4793
-----------	-----------



M MRL Rwy 3-21
R REIL Rwy 3 and 21

EXUTY	VGS1 and descent angles not coincident (VGS1 Angle 3.00/TCH 44).	12000	MINGY
8000	LYRIT 033° 6600	LOMBB 3.00° TCH 50	MINGY
Procedure Turn NA	5.3 NM 4.4 NM 1.3 NM		
CATEGORY	A	B	C
S-3	6140-1½ 1347 (1400-1½)	6240-1½ 1447 (1500-1½)	6560-3 1767 (1800-3)
C CIRCLING	6140-1½ 1310 (1400-1½)	6240-1½ 1410 (1500-1½)	NA