

WAAS CH 61328 W13A	APP CRS 134°	Rwy Idg TDZE Apt Elev	4001 616 616
--	------------------------	-----------------------------	---

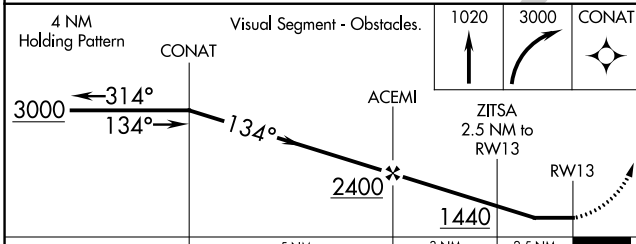
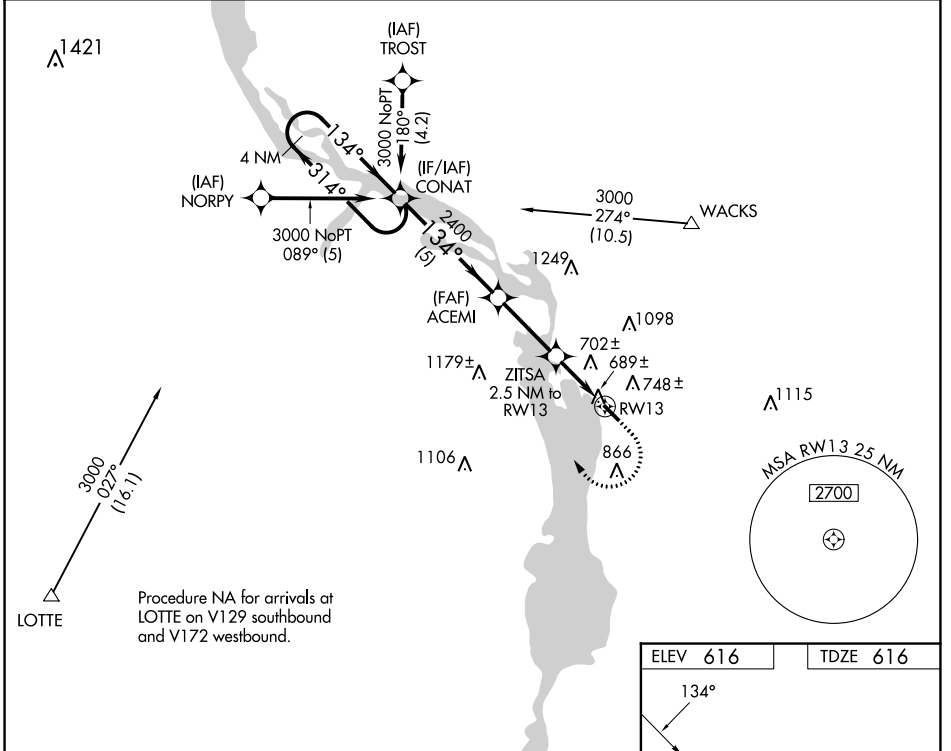
RNAV (GPS) RWY 13

TRI-TOWNSHIP (SFY)

⚠ When local altimeter setting not received, use Sterling/Rockfalls altimeter setting and increase all MDA 80 feet. Procedure NA at night. DME/DME RNP-0.3 NA. Helicopter visibility reduction below 1 SM NA.

⚠ MISSED APPROACH: Climb to 1020 then climbing right turn to 3000 direct CONAT and hold.

AWOS-3PT 118.650	QUAD CITY APP CON★ 125.95 257.8	UNICOM 122.7 (CTAF) 0
----------------------------	---	---------------------------------



ELEV 616	TDZE 616
----------	----------

MIRL Rwy 13-31 0

CATEGORY	A	B	C	D
LP MDA	940-1	324 (400-1)		NA
LNAV MDA	960-1	344 (400-1)		NA
CIRCLING	1160-1 544 (600-1)	1220-1 604 (700-1)		NA

EC-3, 22 FEB 2024 to 21 MAR 2024

EC-3, 22 FEB 2024 to 21 MAR 2024

VORTAC CVA 113.8 Chan 85	APP CRS 036°	Rwy Idg TDZE Apt Elev	N/A N/A 616
--	------------------------	-----------------------------	--

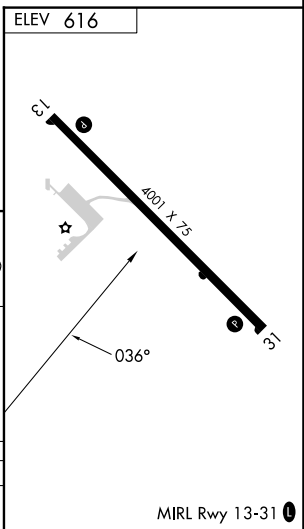
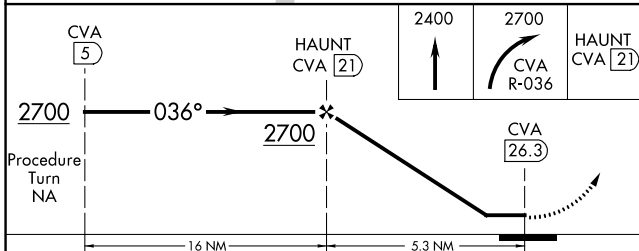
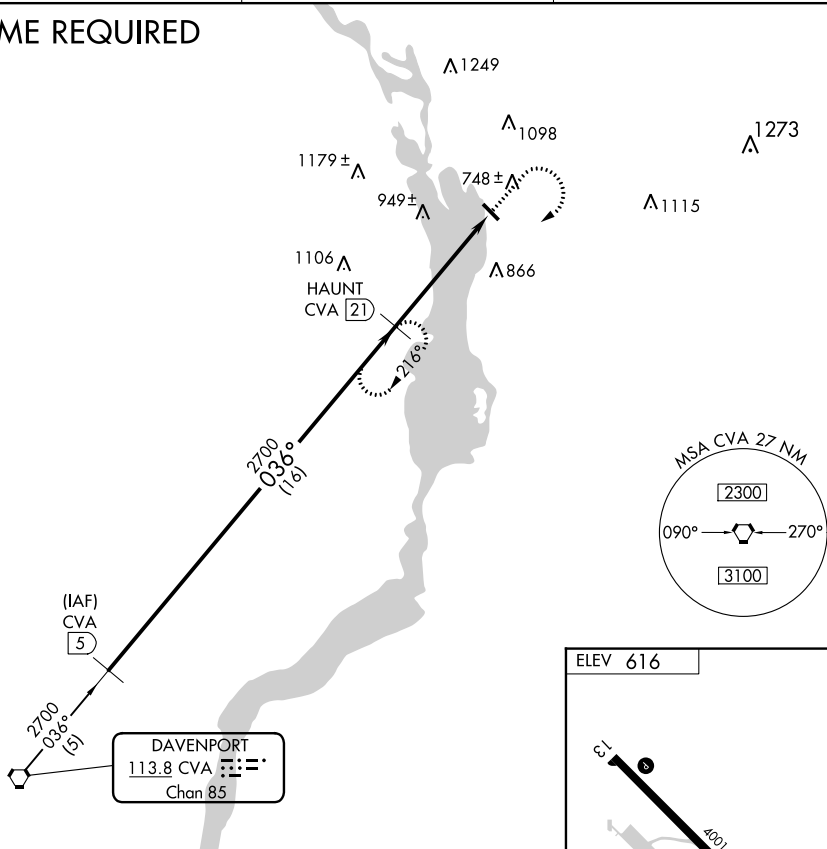
VOR-A
TRI-TOWNSHIP (SFY)

NA When local altimeter setting not received, use Sterling/Rockfalls alimeter setting and increase all MDA 80 feet. Procedure NA at night. Rwy 13, 31 helicopter visibility reduction below 1 SM NA. DME required.

MISSED APPROACH: Climb to 2400 then climbing right turn to 2700 on CVA VORTAC R-036 to HAUNT and hold.

AWOS-3PT 118.650	QUAD CITY APP CON* 125.95 257.8	UNICOM 122.7 (CTAF)
----------------------------	---	-------------------------------

DME REQUIRED



CATEGORY	A	B	C	D
CIRCLING	1300-1 684 (700-1)	1300-1¼ 684 (700-1¼)	NA	

EC-3, 22 FEB 2024 to 21 MAR 2024

EC-3, 22 FEB 2024 to 21 MAR 2024