

DANEI THREE ARRIVAL  
(APE.DANEI3) 10OCT19

(APE.DANEI3) 20198  
DANEI THREE ARRIVAL

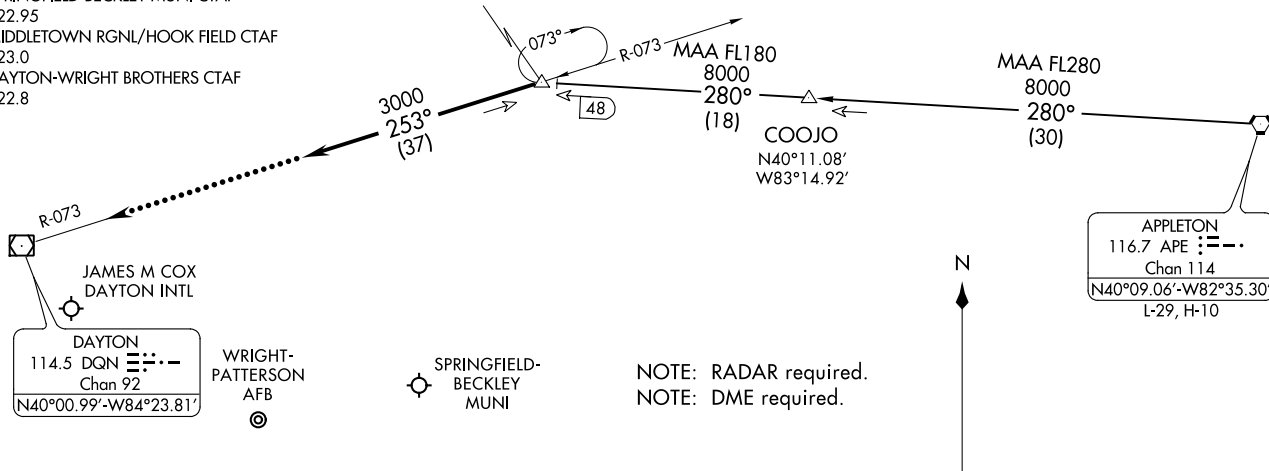
A1-107 (FAA)

DAYTON, OHIO

COLUMBUS APP CON  
118.425 323.15  
DAY ATIS  
125.8  
KFFO ATIS  
124.475 269.9  
SPRINGFIELD-BECKLEY MUNI CTAF  
122.95  
MIDDLETOWN RGNL/HOOK FIELD CTAF  
123.0  
DAYTON-WRIGHT BROTHERS CTAF  
122.8

DANEI  
N40°12.16'-W83°38.36'  
**VERTICAL NAVIGATION PLANNING**

Expect 11000 250K



JAMES M COX  
DAYTON INTL

DAYTON  
114.5 DQN Chan 92  
N40°00.99'-W84°23.81'

WRIGHT-PATTERSON  
AFB

SPRINGFIELD-BECKLEY  
MUNI

NOTE: RADAR required.  
NOTE: DME required.

DAYTON-WRIGHT BROTHERS

MIDDLETOWN RGNL/  
HOOK FIELD

**APPLETON TRANSITION (APE.DANEI3):** From over APE VORTAC on APE R-280 to DANEI. Thence....

....From over DANEI on heading 253°. Expect RADAR vectors to final approach course.

**LOST COMMUNICATIONS:**

In the event of lost communications: At DANEI, proceed direct DQN VOR/DME maintain 3000' until DQN VOR/DME.

NOTE: Chart not to scale.

DAYTON, OHIO

# KEKEE FOUR ARRIVAL

AL-107 (FAA)

DAYTON, OHIO

COLUMBUS APP CON  
 118.425 323.15  
 DAY ATIS  
 125.8  
 KFFO ATIS  
 124.475 269.9  
 SPRINGFIELD-BECKLEY MUNI CTAF  
 122.95

JAMES M COX  
 DAYTON INTL

DAYTON  
 114.5 DQN  
 Chan 92

SPRINGFIELD-BECKLEY  
 MUNI

WRIGHT-PATTERSON  
 AFB

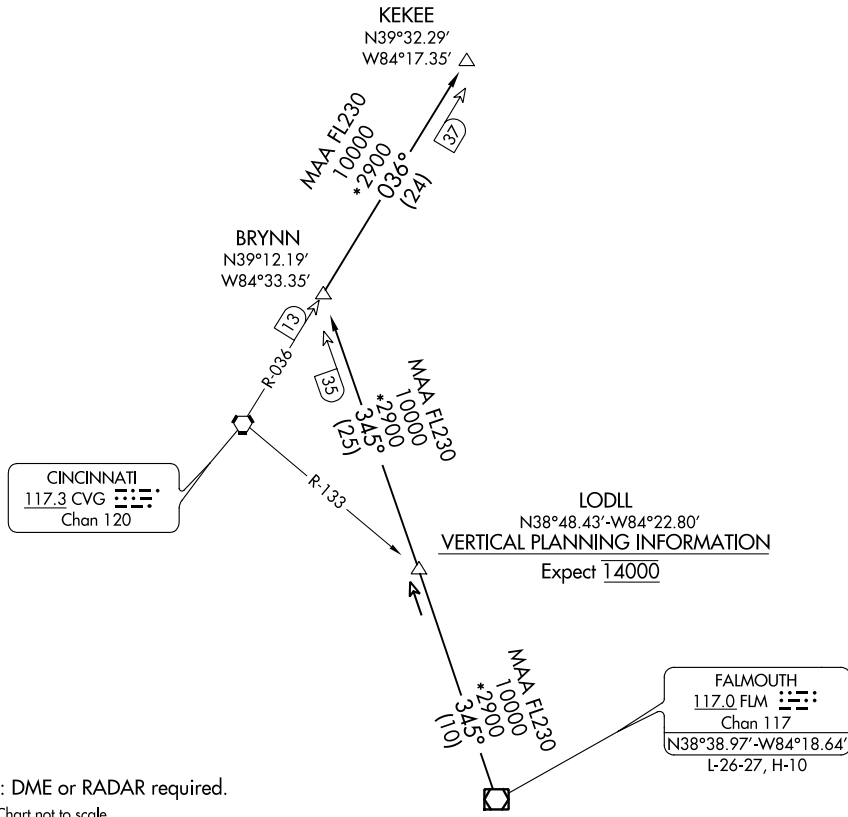
KEKEE  
 N39°32.29'  
 W84°17.35'

BRYNN  
 N39°12.19'  
 W84°33.35'

CINCINNATI  
 117.3 CVG  
 Chan 120

LODLL  
 N38°48.43'-W84°22.80'  
VERTICAL PLANNING INFORMATION  
 Expect 14000

FALMOUTH  
 117.0 FLM  
 Chan 117  
 N38°38.97'-W84°18.64'  
 L-26-27, H-10



NOTE: DME or RADAR required.  
 NOTE: Chart not to scale.

FALMOUTH TRANSITION (FLM.KEKEE4): From over FLM VOR/DME on FLM R-345 to BRYNN, then on CVG R-036 to KEKEE. Thence....

....from over KEKEE: Expect RADAR vectors to join final approach course.

# KEKEE FOUR ARRIVAL

(FLM.KEKEE4) 10OCT19

DAYTON, OHIO

EC-2, 22 APR 2021 to 20 MAY 2021

EC-2, 22 APR 2021 to 20 MAY 2021