

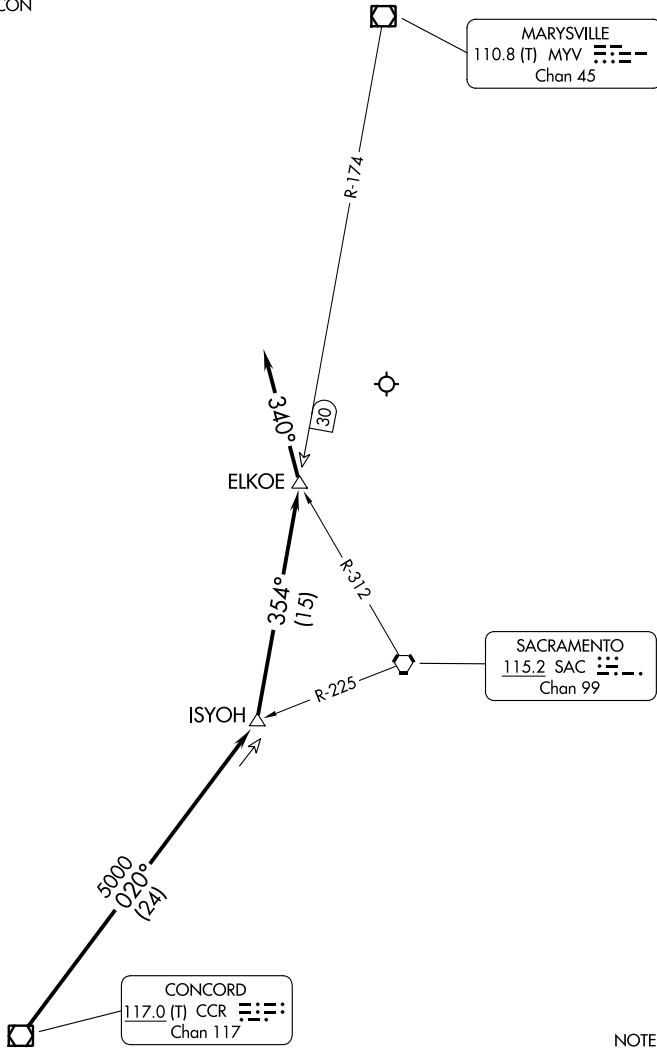
(CCR.CCR2) 24025

CONCORD TWO ARRIVAL

AL-5490 (FAA)

SACRAMENTO INTL (SMF)
SACRAMENTO, CALIFORNIA

NORCAL APP CON
125.25 257.9



NOTE: Chart not to scale.

ARRIVAL ROUTE DESCRIPTION

From over CCR VOR/DME via CCR R-020 to ISYOH INT, then via MYV R-174 to ELKOE INT, then on heading 340°. Expect RADAR vectors to final approach course.

SW-2, 22 FEB 2024 to 21 MAR 2024

SW-2, 22 FEB 2024 to 21 MAR 2024

CONCORD TWO ARRIVAL
(CCR.CCR2) 15NOV12

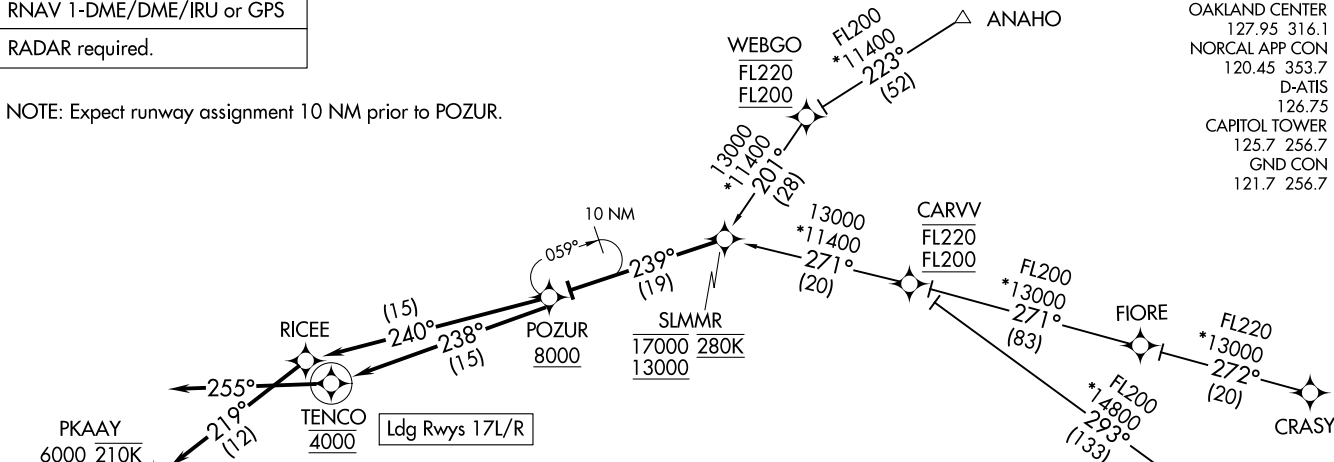
SACRAMENTO, CALIFORNIA
SACRAMENTO INTL (SMF)

SLMMR FIVE ARRIVAL (RNAV)
(SLMMR.SLMMR5) 14JUL22

SACRAMENTO, CALIFORNIA
SACRAMENTO INTL (SMF)

RNAV 1-DME/DME/IRU or GPS
RADAR required.

NOTE: Expect runway assignment 10 NM prior to POZUR.



ARRIVAL ROUTE DESCRIPTION

ANAHO TRANSITION (ANAHO.SLMMR5)
CARVV TRANSITION (CARVV.SLMMR5)
CRASY TRANSITION (CRASY.SLMMR5)
DONNR TRANSITION (DONNR.SLMMR5)
WEBGO TRANSITION (WEBGO.SLMMR5)

From SLMMR on track 239° to cross POZUR at or above 8000.

LANDING RUNWAYS 17L/R: From POZUR on track 238° to cross TENCO at 4000, then on track 255°. Expect RADAR vectors for assigned instrument approach procedure.

LANDING RUNWAYS 35L/R: From POZUR on track 240° to RICEE, then on track 219° to cross PKAAY at or above 6000 and at 210K, then on track 221° to THANN, then on track 168° to cross BANZA at 4000 and at 210K, then on track 168° . Expect RADAR vectors to final approach course.



NOTE: Chart not to scale.

OAKLAND CENTER 127.95 316.1
 NORCAL APP CON 120.45 353.7
 D-ATIS 126.75
 CAPITOL TOWER 125.7 256.7
 GND CON 121.7 256.7

(SLMMR.SLMMR5) 22195
SLMMR FIVE ARRIVAL (RNAV)

AL-5490 (FAA)

SACRAMENTO INTL (SMF)
SACRAMENTO, CALIFORNIA

(SUUTR.SUUTR4) 22195

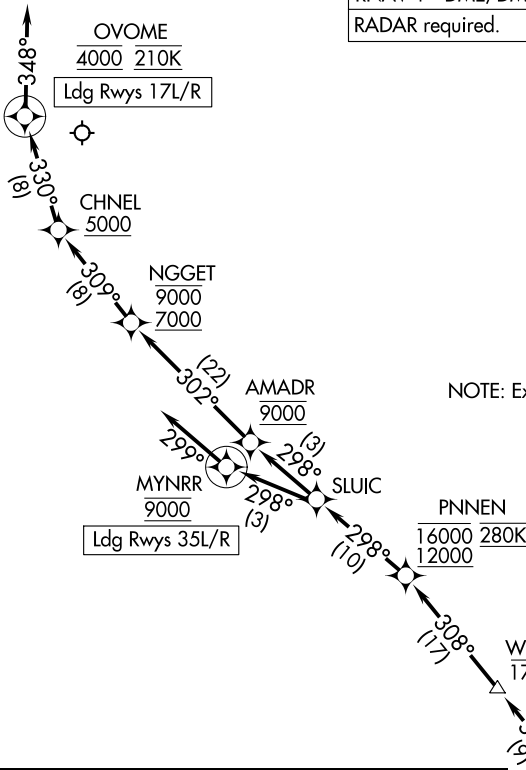
SUUTR FOUR ARRIVAL (RNAV)

AL-5490 (FAA)

SACRAMENTO INTL (SMF)
SACRAMENTO, CALIFORNIA

RNAV 1 - DME/DME/IRU or GPS.
RADAR required.

OAKLAND CENTER
132.8 319.1
NORCAL APP CON
124.8 263.15
D-ATIS
126.75
CAPITOL TOWER
125.7 256.7
GND CON
121.7 256.7



NOTE: Expect runway assignment prior to PNNEN.

ARRIVAL ROUTE DESCRIPTION

NURAY TRANSITION (NURAY.SUUTR4)

From SUUTR on track 308° to cross FOOLZ at FL210, then on track 308° to cross GLDDD at or below FL190, then on track 308° to cross WRAPS at or below 17000, then on track 308° to cross PNNEN between 12000 and 16000 and at 280K, then on track 298° to SLUIC.

LANDING RUNWAYS 17L/R: From SLUIC on track 298° to cross AMADR at 9000, then on track 302° to cross NGGET between 7000 and 9000, then on track 309° to cross CHNEL at or above 5000, then on track 330° to cross OVOME at 4000 and at 210K, then on track 348°. Expect assigned instrument approach or RADAR vectors to final approach course.

LANDING RUNWAYS 35L/R: From SLUIC on track 298° to cross MYNRR at 9000, then on track 299°. Expect assigned instrument approach procedure or RADAR vectors to final approach course.

NOTE: Chart not to scale.

10 NM

SW-2, 22 FEB 2024 to 21 MAR 2024

SW-2, 22 FEB 2024 to 21 MAR 2024

SUUTR FOUR ARRIVAL (RNAV)

(SUUTR.SUUTR4) 14JUL22

SACRAMENTO, CALIFORNIA
SACRAMENTO INTL (SMF)

TUDOR TWO ARRIVAL

AL-5490 (FAA)

NORCAL APP CON
120.45 353.7
OAKLAND CENTER
132.2 350.3

KLAMATH FALLS
115.9 LMT
Chan 106

LAKEVIEW
112.0 LKV
Chan 57

RED BLUFF
115.7 RBL
Chan 104

WILLIAMS
114.4 IIA
Chan 91

LOCALIZER
111.1
I-SMF
Chan 48

SACRAMENTO
115.2 SAC
Chan 99

NOTE: RADAR required.

NOTE: Expect RADAR vectors to final approach course.

NOTE: DME required.

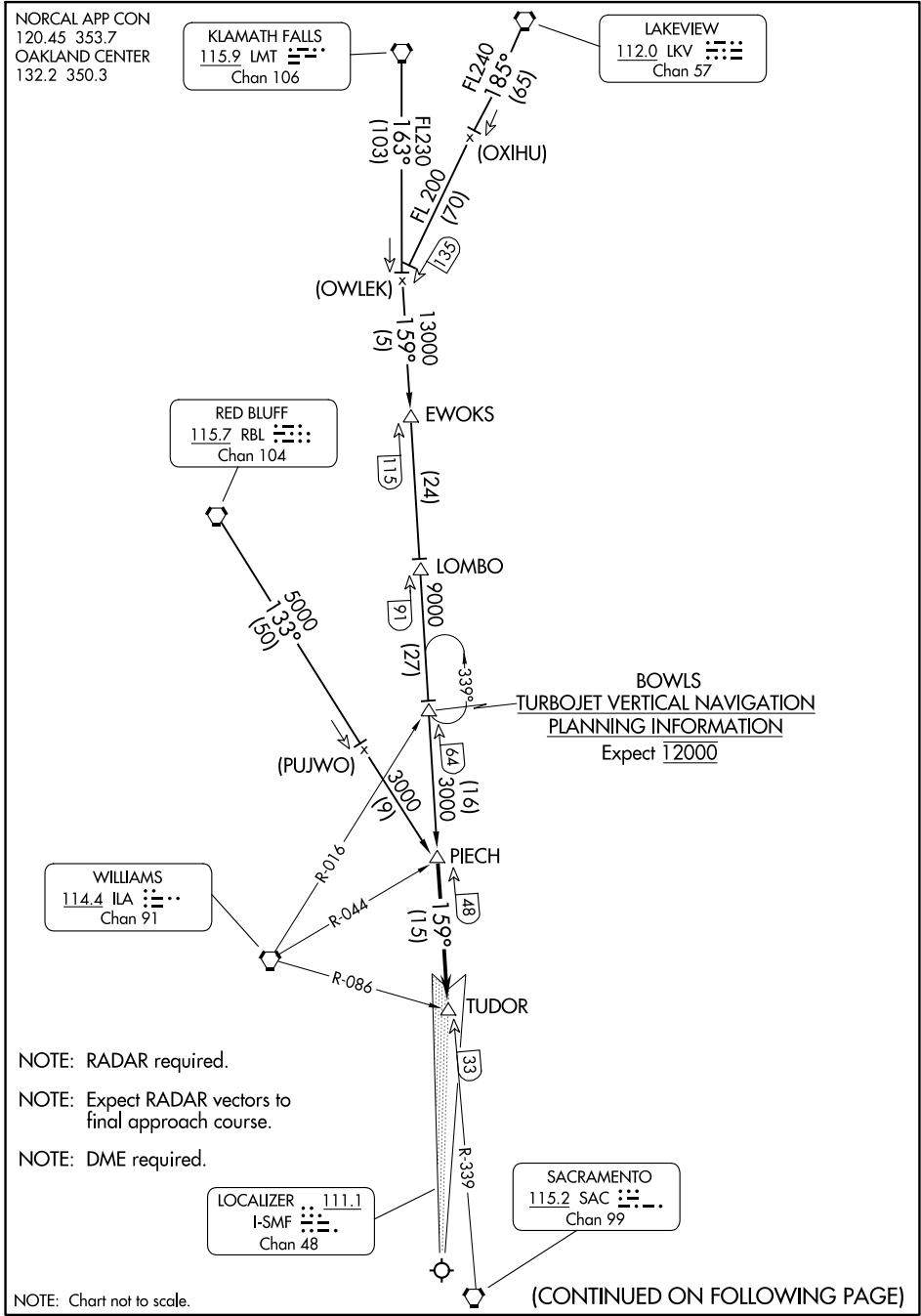
NOTE: Chart not to scale.

(CONTINUED ON FOLLOWING PAGE)

SW-2, 22 FEB 2024 to 21 MAR 2024

SW-2, 22 FEB 2024 to 21 MAR 2024

TUDOR TWO ARRIVAL



ARRIVAL ROUTE DESCRIPTION

KLAMATH FALLS TRANSITION (LMT.TUDOR2): From over LMT VORTAC via LMT R-163 and SAC R-339 to PIECH INT. Thence

LAKEVIEW TRANSITION (LKV.TUDOR2): From over LKV VORTAC via LKV R-185 and SAC R-339 to PIECH INT. Thence

RED BLUFF TRANSITION (RBL.TUDOR2): From over RBL VORTAC via RBL R-133 to PIECH INT. Thence

. . . . From PIECH INT via SAC R-339 to TUDOR INT/DME. Expect RADAR vectors.

SW-2, 22 FEB 2024 to 21 MAR 2024

SW-2, 22 FEB 2024 to 21 MAR 2024