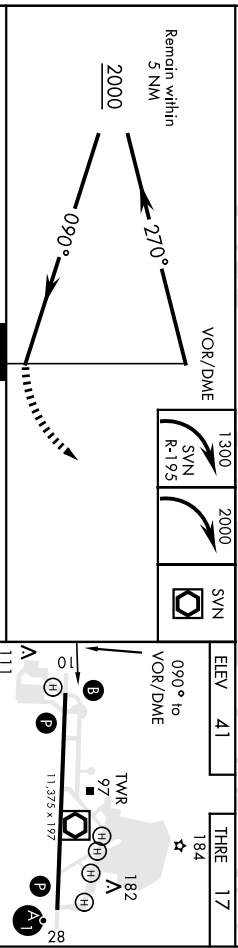
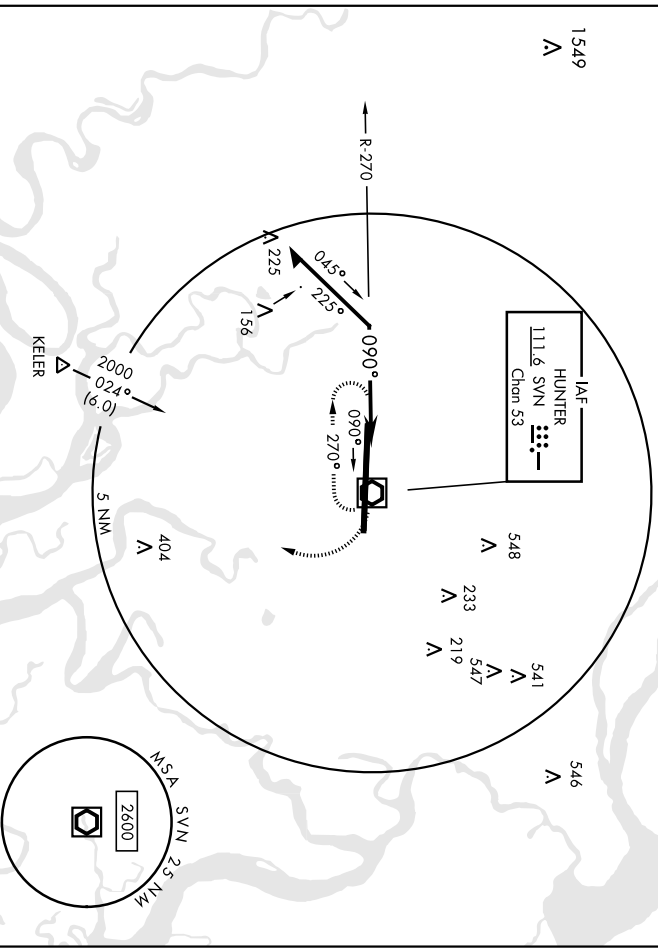
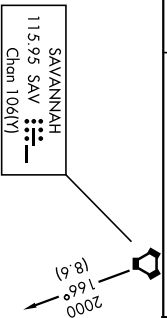


SVN VOR/DME <b>111.6</b> Chen <b>53</b>	APCH CRS <b>090°</b>	Pub. Idg THR ELEV <b>17</b> <b>41</b>	AL-381 [USA]	HUNTER AAF (KSVN)
ATIS <b>127.525</b> <b>323.125</b>	SAVANNAH APP CON <b>120.4 353.775</b>	HUNTER TOWER* <b>124.975</b> (CTAF) <b>279.575</b>	GND CON <b>121.8 291.675</b>	ASR/PAR

**B** MISSED APPROACH: Climbing right turn to 1300 via SVN R-195, then climbing right turn to 2000 direct SVN VOR/DME and hold.



CATEGORY S-10	COPTER 540-1/2	523	[500-1/2]
VOR/DME		1300	2000
SVN			
ELEV		41	17
THR		184	17
REIL Rwy 10			
HIRL Rwy 10-28			

SAVANNAH, GEORGIA  
 32°01'N-81°09'W  
 HUNTER AAF (KSVN)  
 COPTER VOR RWY 10  
 Orig A 200C111

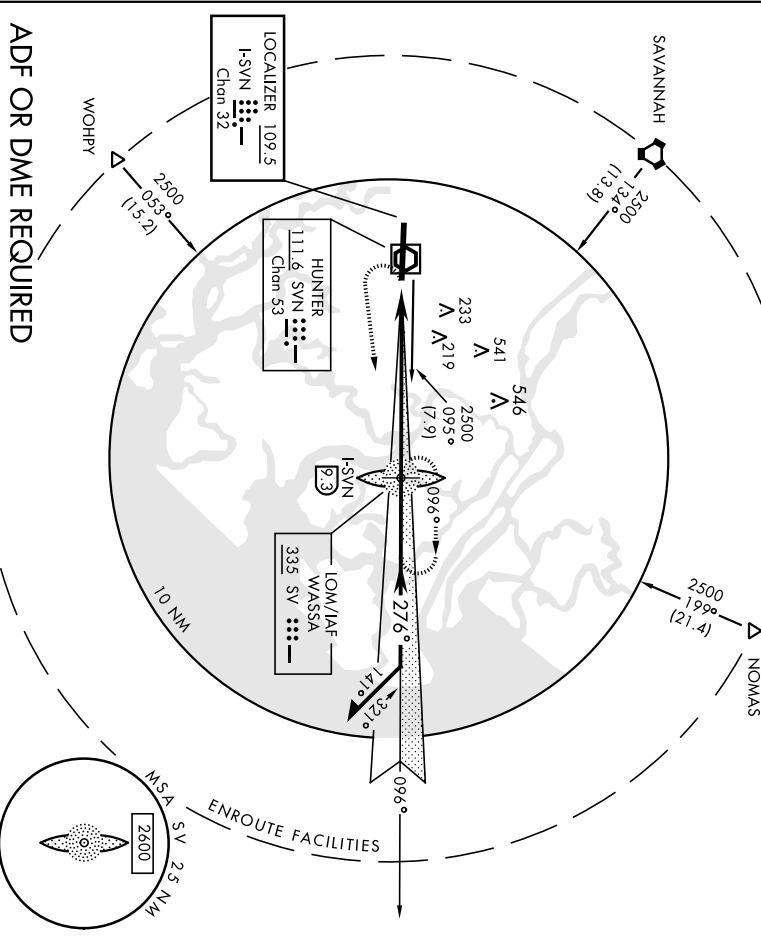
AL-381 (USA)

HUNTER AAF (KSVN)

LOC/DME I-SVN Chon 32	APCH CRS <b>276°</b>	Rwy Idg TDL Elev	<b>11,375</b> <b>41</b>
Chon 32	APch Elev	41	41

ATIS <b>127.525</b> <b>323.125</b>	SAVANNAH APP CON <b>120.4 353.775</b>	HUNTER TOWER * <b>124.975</b> (CLAF) <b>279.575</b>	MISSED APPROACH: Climb to 800, then climbing left turn to 2500 direct WASSA LOM and hold.
			ALSF-1

GND CON <b>121.8 291.675</b>	ASR/PAR <b>121.8 291.675</b>
---------------------------------	---------------------------------

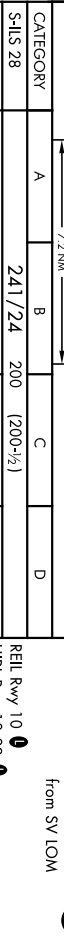


WOPHY

**ADF OR DME REQUIRED**

<b>800</b> 	<b>2500</b> 	WASSA LOM I-SVN <b>(3)</b>	Remain within 10 NM of WASSA LOM
		WASSA SV I-SVN <b>(3)</b>	

CATEGORY SHLS 28 S-LOC 28 CIRCLING *	A	B	C	D
		241 / 24	200	
460 / 24	419	460 / 40 419 (500-1/2)	460 / 50 419 (500-1)	460 / 50 419 (500-1)
500 -1 459 (500-1)	520 -1 479 (500-1)	520 -1 1/2 479 (500-1 1/2)	600-2 559 (600-2)	600-2 559 (600-2)



REIL Rwy 10 <b>(1)</b> HIRL Rwy 10-28 <b>(1)</b>	FAF to MAP 7.2 NM
276° 7.2 NM from SV LOM	

SAVANNAH, GEORGIA Andd 3 22AUG13	HUNTER AAF (KSVN) <b>ILS or LOC RWY 28</b>
	Mins:Sec 7:12 4:48 3:36 2:53 2:24

SAVANNAH, GEORGIA

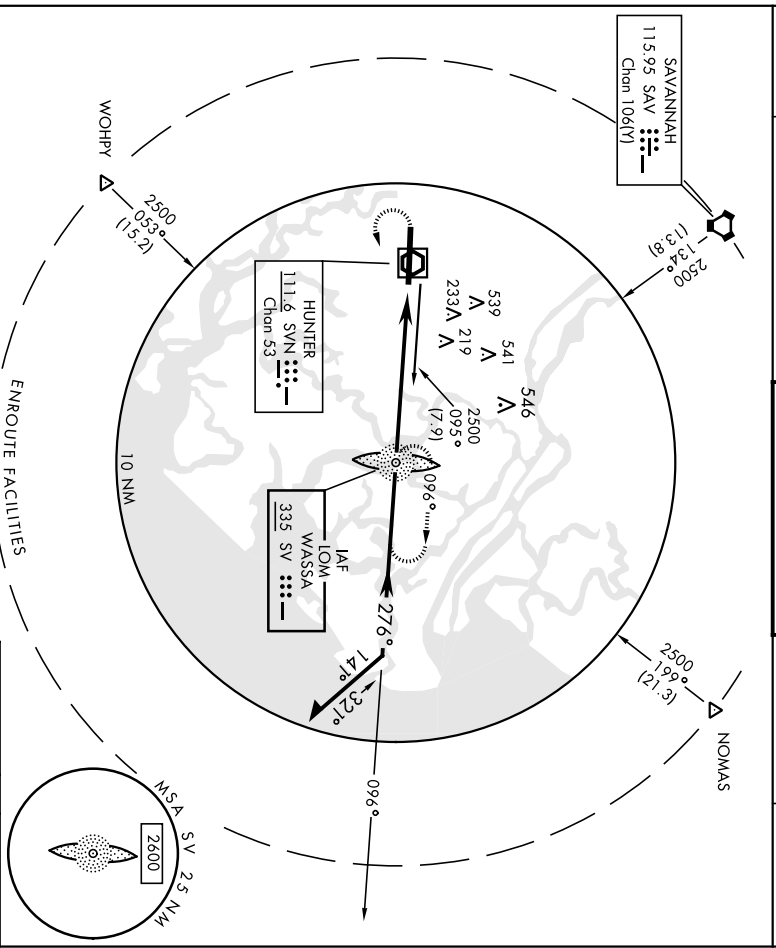
# NDB RWY 28

AL-381 [USA]

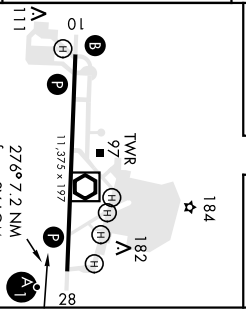
HUNTER AAF (KSVN)

LOM SV <b>335</b>	APCH CRS <b>276°</b>	Rwy Idg TDZE Appr Elev <b>41</b>	<b>11,375</b>
ATIS <b>127.525</b> <b>323.125</b>	SAVANNAH APP CON <b>120.4 353.775</b>	HUNTER TOWER* <b>124.975 (CTAF) 279.575</b>	

<p>* When ALSF Inop., increase CAT AB vis to RVR 50, CAT CD to 2 miles. ** Circling NA N of Rwy 10-28 for CAT D.</p>		<p>ALSF-1 MISSED APPROACH: Climb to 1500, then climbing left turn to 2500 direct SV LOM and hold.</p>
GND CON <b>121.8 291.675</b>	ASR/PAR	



ELEV 41	TDZE 41
---------	---------



CATEGORY	A		B		C		D	
	700/40	659 (700-¾)	700/60	700-1½	700-1¾	700-2	700-1½	700-2
S-28*	700-1¾ (700-1¾) 659 (700-1¾)							
CIRCLING**	700-1 659 (700-1)		700-1¾ 659 (700-1¾)		700-2 659 (700-1¾)		700-2 659 (700-2)	

SAVANNAH, GEORGIA  
 32°01'N-81°09'W  
 HUNTER AAF (KSVN)  
 NDB RWY 28  
 And# 10 19283

SAVANNAH, GEORGIA

# RNAV (GPS) RWY 10

19283

AL-381 [USA]

HUNTER AAF (KSVN)

ARCH CRS **Rwy Log 11-375**

**096°** TDZE **26**  
Appr Elev **41**

\* Grading not authorized N of Rwy 10-28 for CAT D.

**B** MISSED APPROACH: Climb to 2500 direct SRKIS and hold.

**B** MISSED APPROACH: Climb to 2500 direct SRKIS and hold.

ATIS **127.525**  
**323.125**

SAVANNAH APP CON  
**120.4 353.775**

HUNTER TOWER \*  
**124.975** (CTAF) **279.575**

GND CON  
**121.8 291.675**

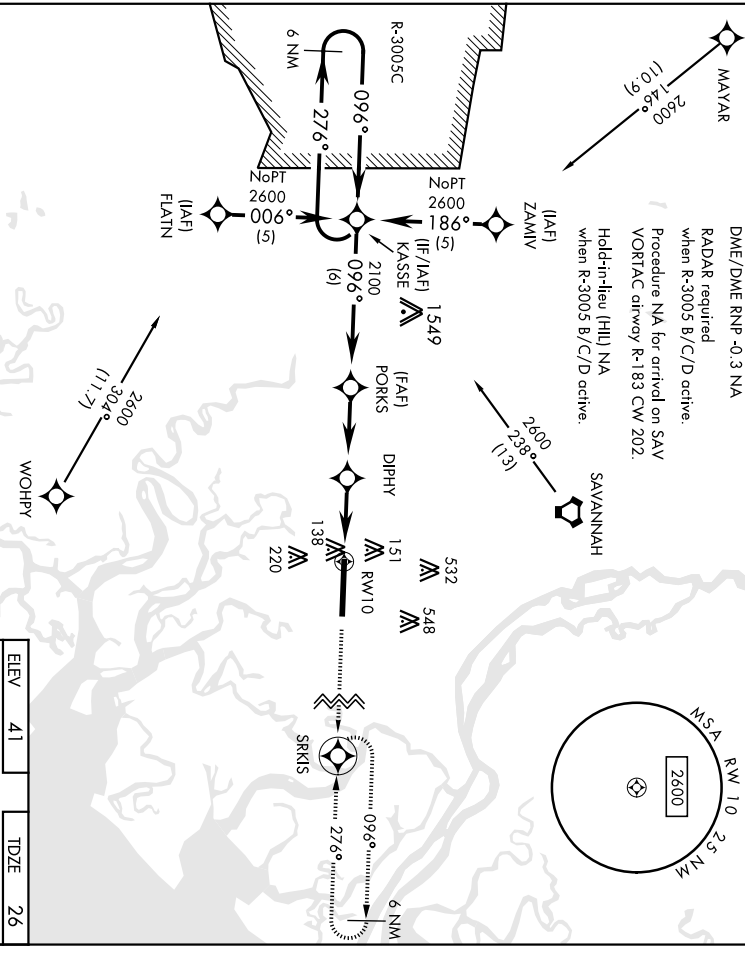
ASR/PAR

DME/DME RNP -0.3 NA

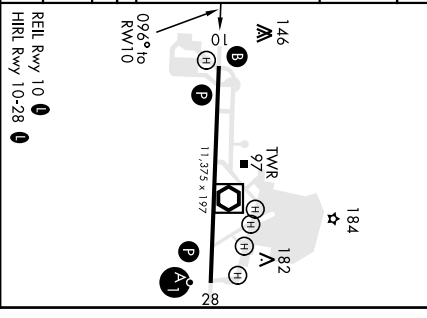
RADAR required when R-3005 B/C/D active.

Procedure NA for arrival on SAV VORTAC driveway R-183 CW 202.

Hold-in-leu (HLL) NA when R-3005 B/C/D active.



CATEGORY	A			B		C		D
	420-1			394	400-1		420-1½	
LNAV MDA	500-1			479	500-1½		600-2	
CIRCLING *	459 (500-1)			479	500-1½		559 (600-2)	



SAVANNAH, GEORGIA **32°01'N-81°09'W**  
 Andr 1 10NOV15 **HUNTER AAF (KSVN)**  
**RNAV (GPS) RWY 10**

SE-4, 22 APR 2021 to 20 MAY 2021

SE-4, 22 APR 2021 to 20 MAY 2021

# RNAV (GPS) RWY 28

AL-381 [USA]

HUNTER AAF (KSVN)

WAS	APCH CRS	Rwy Idg	<b>11,375</b>
CH <b>82111</b>	<b>276°</b>	TDZE	<b>41</b>
<b>W28A</b>		Appt Elev	<b>41</b>
DME/DME RNP -0.3 NA.			

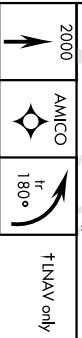
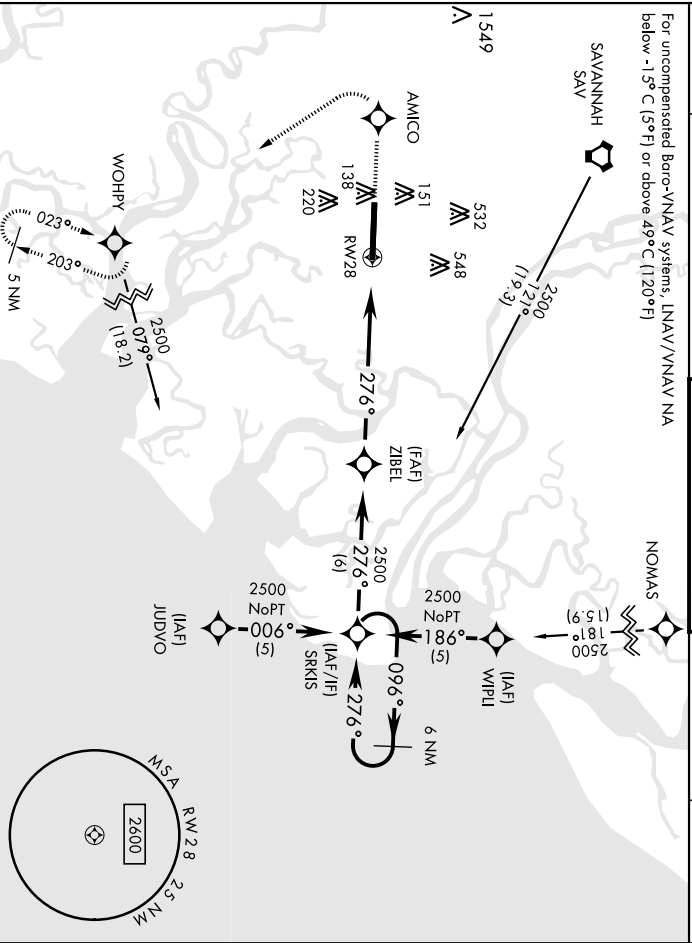
▼ \* Circling not authorized N of Rwy 10-28 for CAT D.



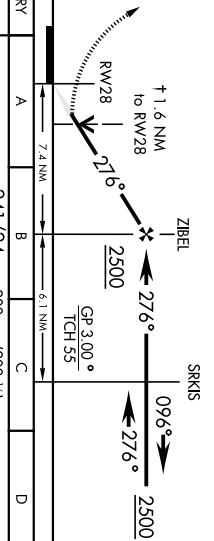
MISSED APPROACH: Climb to 2000 direct AMICO and left turn on track 180° to WOHPY and hold.

ATIS	SAVANNAH APP CON	TOWER *	<b>124.975</b> (CTAF) <b>279.575</b>
<b>127.525</b>	<b>120.4 353.775</b>	GND CON	<b>121.8 291.675</b>
<b>323.125</b>		ASR/FAR	

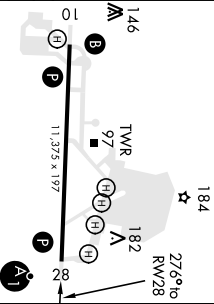
For unpenetrated Baro-VNAV systems: UNAV/VNAV NA below -15°C (5°F) or above 49°C (120°F)



ELEV	41	TDZE	41
------	----	------	----



CATEGORY	A				B				C				D			
	LPV DA	241/24	200	(200-1/2)	487/50	446	(500-1)	600/50	600/50	600-1 1/2	559 (600-1)	559 (600-1/2)	600-2	559 (600-2)		
UNAV/UNAV DA	487/50	446	(500-1)	600/50	600/50	600-1 1/2	559 (600-1)	559 (600-1/2)	600-2	559 (600-2)						
UNAV MDA	600/24	559	(600-1/2)	600/50	600/50	600-1 1/2	559 (600-1)	559 (600-1/2)	600-2	559 (600-2)						
CIRCLING*	600-1	559	(600-1)	600-1 1/2	559 (600-1/2)	600-2	559 (600-2)									



# HUNTER AAF (KSVN) RNAV (GPS) RWY 28

SAVANNAH, GEORGIA

# VOR RWY 28

AL-381 [USA]

HUNTER AAF (KSVN)

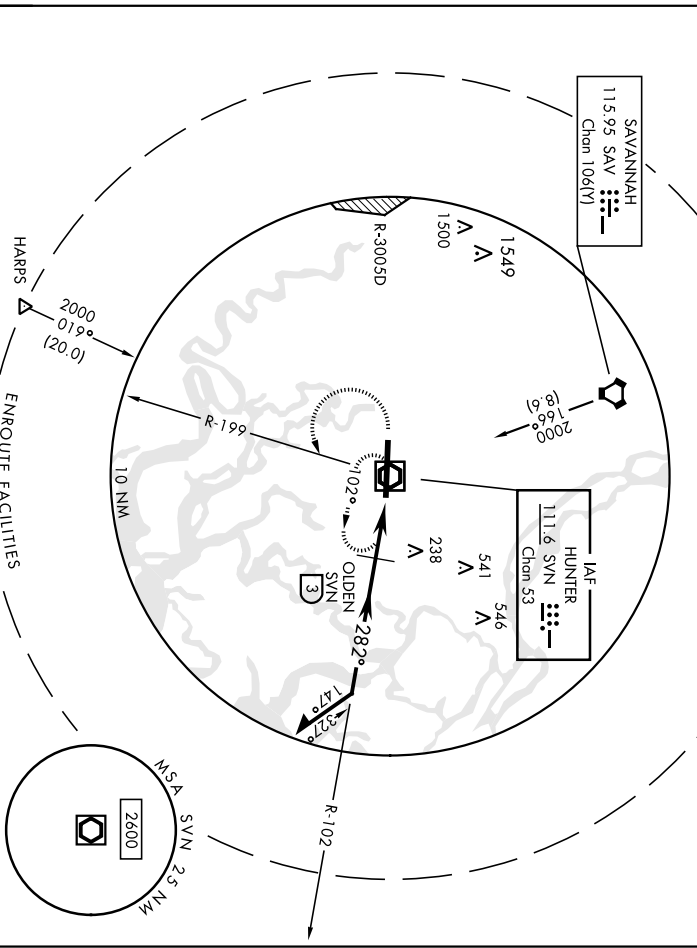
SVN VOR/DME	APCH CRS	Rev./Idg	<b>11,375</b>
<b>111.6</b>	<b>282°</b>	TDZE	<b>41</b>
Chn <b>53</b>	Appl Elev		<b>41</b>
AITS		SAVANNAH APP CON	<b>120.4 353.775</b>
<b>127.525</b>			
<b>323.125</b>			

ALSF-1	HUNTER TOWER*
	<b>124.975</b> (CTAF) <b>279.575</b>

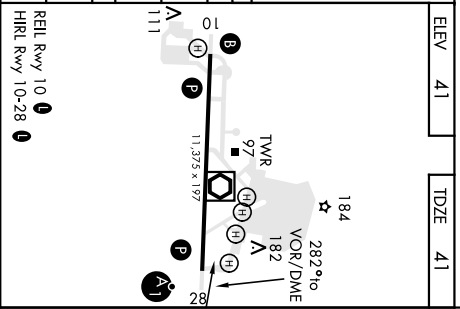
GND CON	<b>121.8 291.675</b>
ASR/PAR	

▲ When AIS Inop, increase CAT Ab vis to 1 mile.  
 \*\* Circling MVA N of Rwy 10-28 for CAT D.

MISSED APPROACH: Climb to 1200 then climbing left turn to 2000 direct SVN VOR/DME and hold.



1200		SVN VOR/DME	1200	ELEV	41	TDZE	41
2000		SVN	2000				
		Remain within 10 NM of SVN VOR/DME					
		OLDEN [3]	1600				
		102°	580				
		282°	580				
		1.3 NM					
		1 NM					
CATEGORY	A	B	C	D			
S-28 *	580/40	539 (600-¾)	580/50	580/60	580/50	580/2	600-2
			539 (600-1)	539 (600-1¼)	539 (600-1)	539 (600-2)	600-2
CIRCLING **	580-1	539 (600-1)	580-1½	600-2	580-2	559 (600-2)	600-2
			539 (600-1½)	559 (600-2)			
OLDEN FIX MINIMUMA							
S-28 *	500/40	459 (500-¾)	500/50	500/50	500/50	500/50	500/50
			459 (500-1)	459 (500-1)	459 (500-1)	459 (500-1)	459 (500-1)
CIRCLING **	500-1	520-1	520-1½	600-2	600-2	600-2	600-2
	459 (500-1)	479 (500-1)	479 (500-1½)	559 (600-2)	559 (600-2)	559 (600-2)	559 (600-2)



SAVANNAH, GEORGIA  
 Amdt 8 19283

# HUNTER AAF (KSVN) VOR RWY 28

SAVANNAH, GEORGIA

# VOR/DME RWY 28

VOR/DME SVN	APCH CRS	Run-Ideg	<b>11,375</b>
<b>111.6</b>	<b>282°</b>	TDZE	<b>41</b>
Chon <b>53</b>		Appl Elev	<b>41</b>

AL-381 [USA]

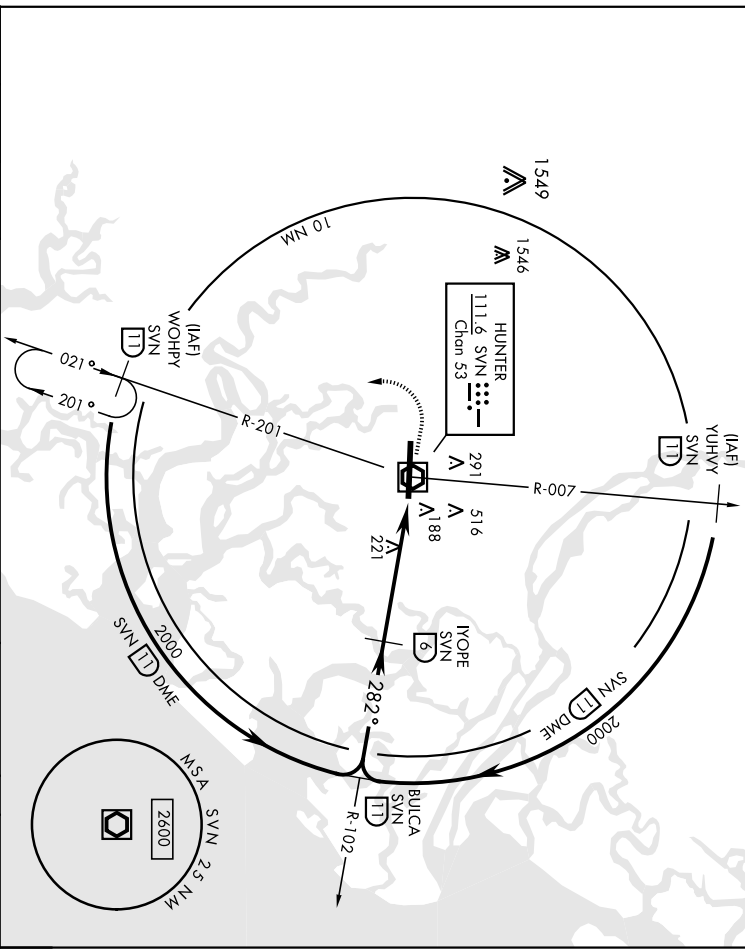
HUNTER AAF (KSVN)

\* Circling NA N of Rwy 10-28 for CAT D.



MISSED APPROACH: Climb to 800, then climbing left turn to 2000 via SVN R-201 to WOHPY/11 DME and hold.

ATIS <b>127.525</b> <b>323.125</b>	SAVANNAH APP CON <b>120.4 353.775</b>	HUNTER TOWER * <b>124.975 (CTAF) 279.575</b>	GND CON <b>121.8 291.675</b>	ASR/PAR
--	--	---	---------------------------------	---------



800 2000 SVN R-201 WOHPY SVN TD 119 VOR/DME OYOSA 0.9 5.1 NM IYOPE 6 1800 282° 2000 BULCA R-102 117 3.05° TCH 54	800 2000 SVN R-201 WOHPY SVN TD 117 VOR/DME OYOSA 0.9 5.1 NM IYOPE 6 1800 282° 2000 BULCA R-102 117 3.05° TCH 54	800 2000 SVN R-201 WOHPY SVN TD 117 VOR/DME OYOSA 0.9 5.1 NM IYOPE 6 1800 282° 2000 BULCA R-102 117 3.05° TCH 54	800 2000 SVN R-201 WOHPY SVN TD 117 VOR/DME OYOSA 0.9 5.1 NM IYOPE 6 1800 282° 2000 BULCA R-102 117 3.05° TCH 54	800 2000 SVN R-201 WOHPY SVN TD 117 VOR/DME OYOSA 0.9 5.1 NM IYOPE 6 1800 282° 2000 BULCA R-102 117 3.05° TCH 54	184 282° VOR/DME 182 A 97 TWR 11.375 x 179 111 28 111
CATEGORY A B C D	CATEGORY A B C D	CATEGORY A B C D	CATEGORY A B C D	CATEGORY A B C D	184 282° VOR/DME 182 A 97 TWR 11.375 x 179 111 28 111
5-28 480/24 439 (500-1/2)	480/40 439 (500-3/4)	480/50 439 (500-1)	480/40 439 (500-3/4)	480/50 439 (500-1)	
CIRCLING * 459 (500-1)	520-1 479 (500-1)	520-1 479 (500-1)	520-1 1/2 479 (500-1 1/2)	600-2 559 (600-2)	

SAVANNAH, GEORGIA

32°01'N-81°09'W

Amhd 1 19283

# HUNTER AAF (KSVN)

## VOR/DME RWY 28