

APP CRS 215°	Rwy Idg 5500
	TDZE 5757
	Apt Elev 5762

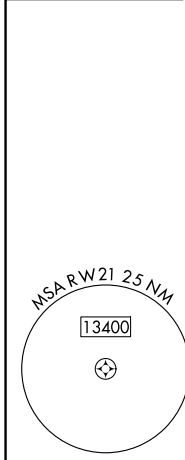
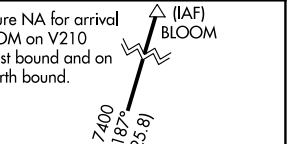
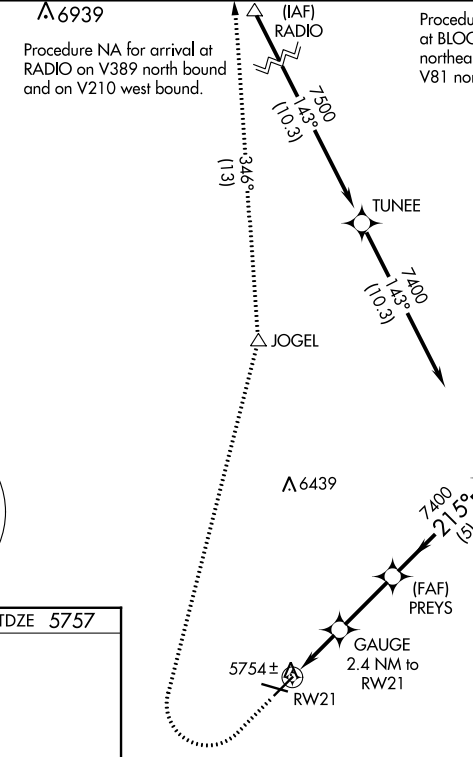
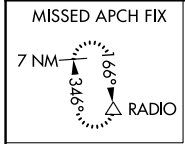
RNAV (GPS) RWY 21

PERRY STOKES (TAD)

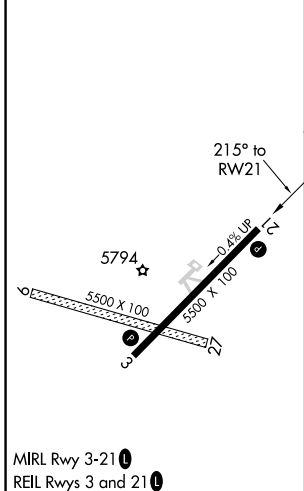
⚠ Circling NA to Rwy 9 and 27. DME/DME RNP-0.3 NA. When local altimeter setting not received, use Pueblo altimeter setting and increase all MDA 300 feet: increase LNAV Cat C/D visibility ½ SM, Circling Cat B/D visibility ¼ SM and Circling Cat C visibility 1 SM. VDP NA when using Pueblo altimeter setting.

⚠ MISSED APPROACH: Climb to 6200 then climbing right turn to 10000 direct JOGEL and on track 346° to RADIO and hold.

ASOS 119.025	DENVER CENTER 128.375 379.95	UNICOM 122.8 (CTAF)
------------------------	--	-------------------------------



ELEV 5762	TDZE 5757
-----------	-----------



6200	10000	JOGEL	RADIO	PREYS	GOERS
↑	↷	△	tr 346°	△	
		GAUGE 2.4 NM to RWY 21			
		≤ 3.00° TCH 40			
		6540		7400	
		0.8 NM		5 NM	
		0.8 NM		1.6 NM	
		2.7 NM		5 NM	
CATEGORY	A		B	C	D
LNAV MDA	6020-1		263 (300-1)		
C CIRCLING	6180-1 418 (500-1)	6300-1 538 (600-1)	6340-1½ 578 (600-1½)	6580-2¾ 818 (900-2¾)	

APP CRS	Rwy Idg	5500
035°	TDZE	5757
	Apt Elev	5762

RNAV (GPS) RWY 3

PERRY STOKES (TAD)

RNP APCH.

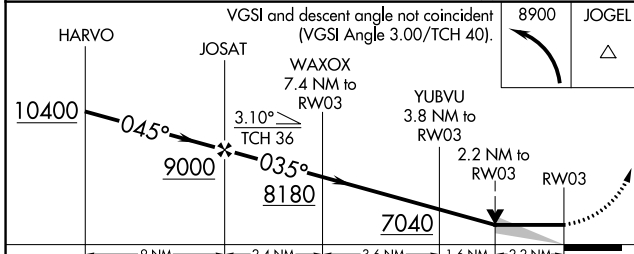
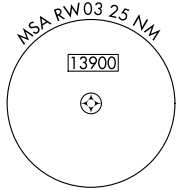
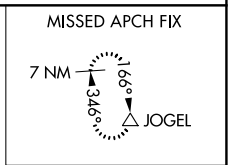
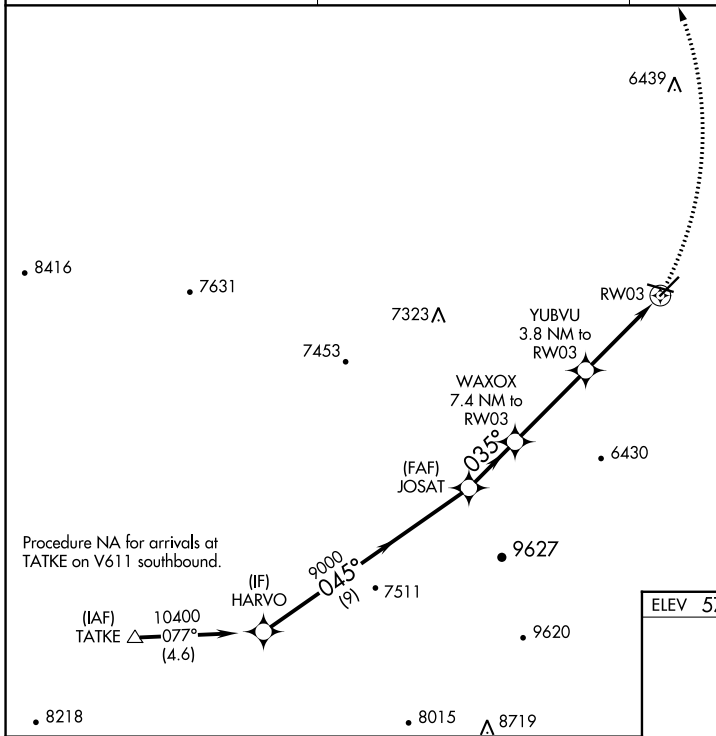
⚠ Circling NA to Rwy 9 and 27. VDP NA when using Pueblo Meml altimeter setting. When local altimeter setting not received, use Pueblo Meml altimeter setting and increase all MDAs 300 feet; increase LNAV Cats A/B visibility ¼ SM and Cats C/D visibility 1 SM and Circling Cats A/B visibility ¼ SM, Cat C 1 SM, and Cat D ½ SM.

MISSED APPROACH: Climbing left turn to 8900 direct JOGEL and hold.

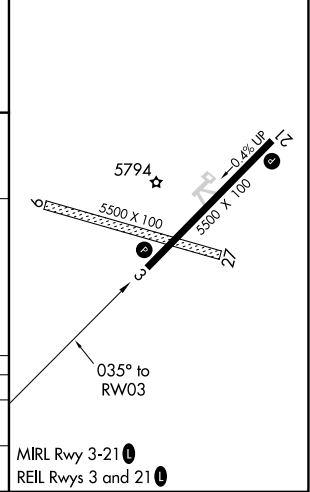
ASOS
119.025

DENVER CENTER
128.375 379.95

UNICOM
122.8 (CTAF) 0



ELEV 5762	TDZE 5757
-----------	-----------



CATEGORY	A	B	C	D
LNAV MDA	6500-1 743 (800-1)	6500-1¼ 743 (800-1¼)	6500-2 743 (800-2)	6560-2½ 798 (800-2½)
CIRCLING	6500-1 738 (800-1)	6500-1¼ 738 (800-1¼)	6500-2 738 (800-2)	6560-2½ 798 (800-2½)

MIRL Rwy 3-21 0
REIL Rwy 3 and 21 0

SW-1, 18 MAY 2023 to 15 JUN 2023

SW-1, 18 MAY 2023 to 15 JUN 2023