

LOC I-TCM	APCH CRS	Run/Idg
108.5	345°	10,108
		TDZE
		Appt Elev
		322

AL-41.4 [USAF]

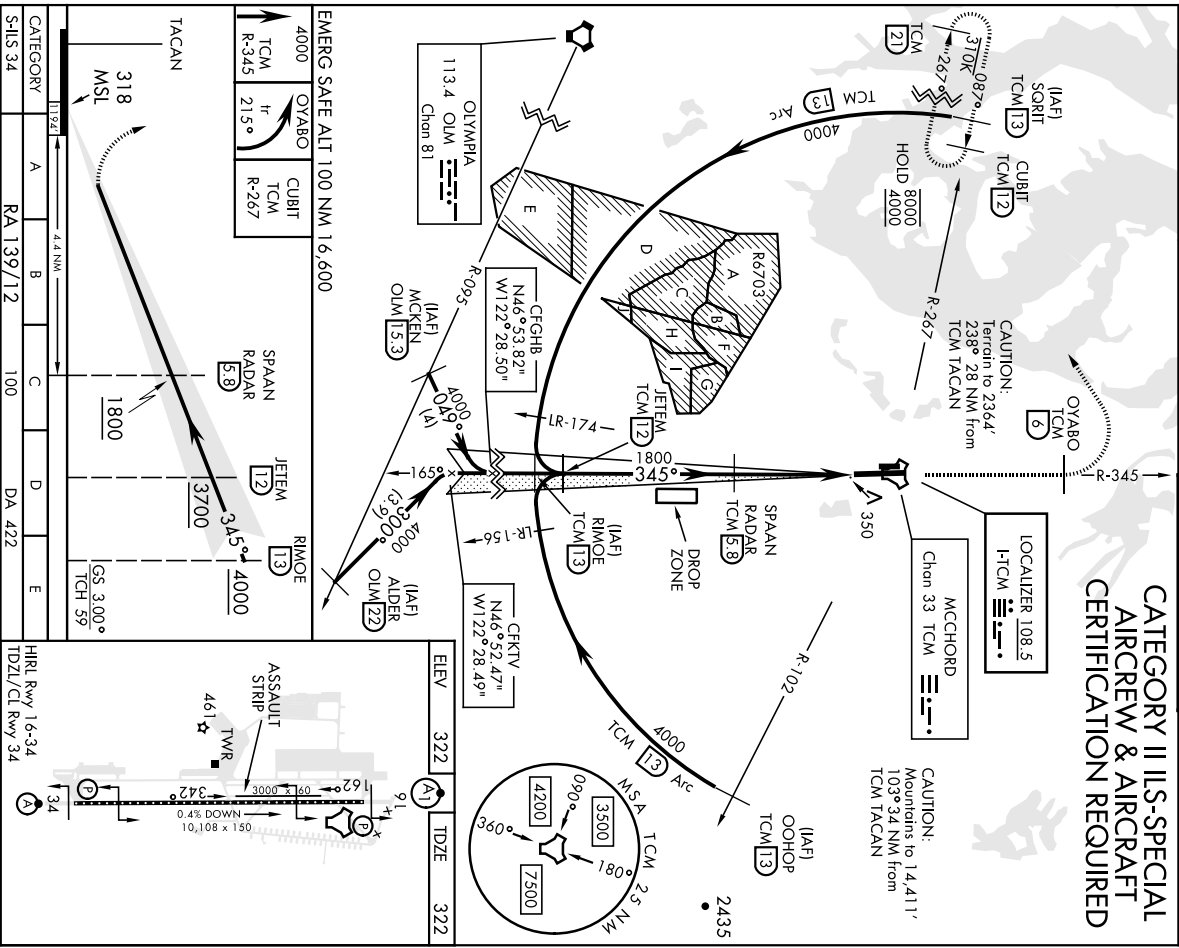
ATIS	SEATTLE APP CON
135.825 270.1	126.5 377.15

MISSED APPROACH: Climb to 4000 on TCM TACAN R-345 to OYABO, then turn left via 21.5° course to intercept TCM R-267 to CUBIT and hold, continue climb in hold to 4000. Cross OYABO at or above 3000.

TOWER	GND CON
124.8 259.3	118.175 279.65

MCCHORD FLD (KTCM)

CATEGORY II ILS-SPECIAL AIRCREW & AIRCRAFT CERTIFICATION REQUIRED



NW-1, 22 FEB 2024 to 21 MAR 2024

NW-1, 22 FEB 2024 to 21 MAR 2024

TACOMA, WASHINGTON

47°08'N-122°29'W

MCCHORD FLD (KTCM)

Amdt 4 10SEP20

ILS Rwy 34 (CAT II)

LOC I-MAR	APCH CRS	Req'd Idg	10,108
109.9	165°	TDZE	286
		Appt Elev	322

AL-414 [USAF]

MCCHORD FLD (KTCM)

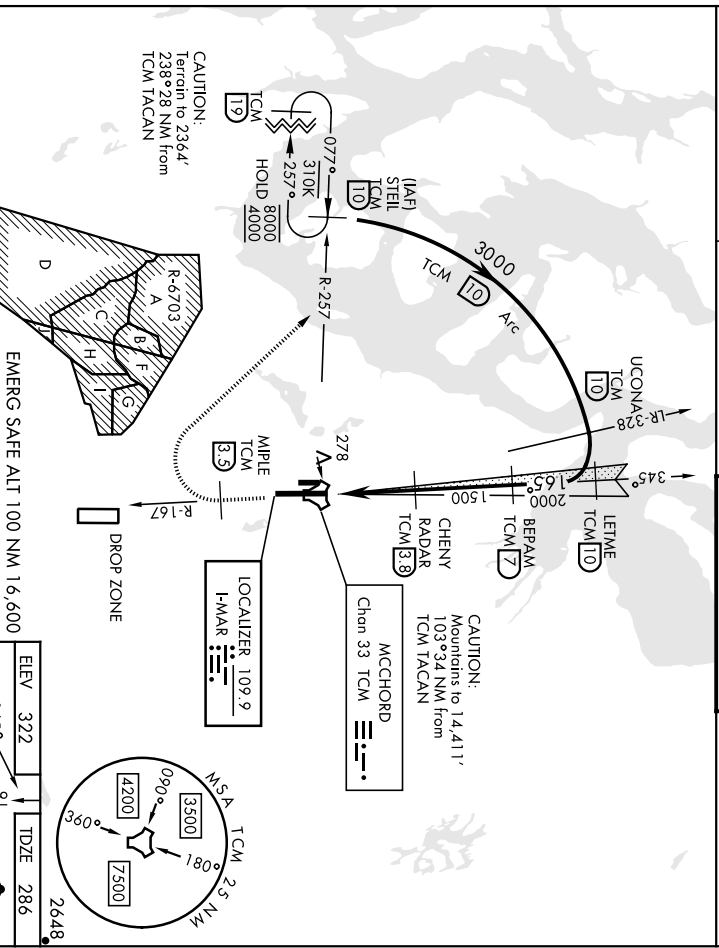
RADAR or DME required.

▼ **When AIS Inop, increase RVR to 4.5, vis to ½ mile
 *** When AIS Inop, increase CAT Ab RVR to 35, vis to 1 mile. CAT CDE vis to 1 ½ miles.
 *** Circling not authorized E of Rwy 16-34.

ALSF-1

MISSED APPROACH: Climb to 4000 on TCM TACAN R-167. At 3.5 DME turn right via 295° course to intercept TCM R-257 to STELL and hold. Continue climb in hold to 4000.

ATIS	SEATTLE APP CON	TOWER	GND CON
135.825 270.1	126.5 377.15	124.8 259.3	118.175 279.65



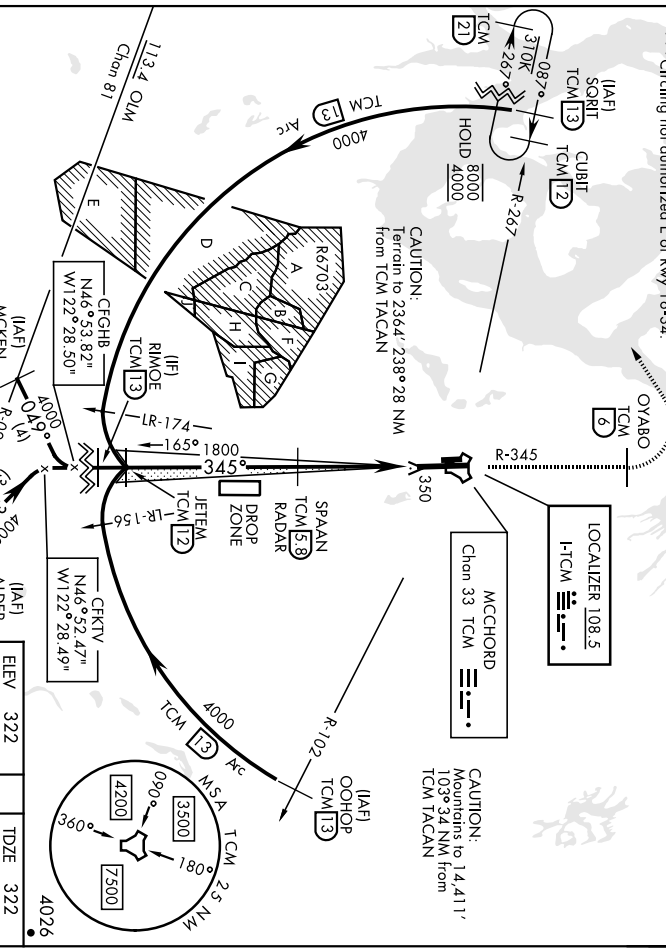
STEEL R-257	UCONA LR-328	LETME Lntcp Lczt	BEPAM	CHENY RADAR (3.8)	FABOD (D7)	TACAN
4000	3000	165°	2000	1500		
GS 3,000°	TDZ 55'					
CATEGORY	A	B	C	D	E	
S-ILS 16 *	601 / 40		315			
S-LOC 16 ***	860 / 40	574 (600-¾)	860-1½	574	1020-2½	698
CIRCLING ***	940-1	618 (700-1)	940-1-¾	618 (700-1¾)	940-2	618 (700-2½)

ELEV	322	TDZE	286		
LOC ILS	109.9	APCH CRS	165°		
MCCHORD	Chon 33 TCM				
FAT to MAF	3.1 NM				
TDZ/CL Rwy	34				
HRL Rwy	16-34				
Knots	60	90	120	150	180
Min:sec	3:06	2:04	1:33	1:14	1:02

LOC I-TCM	APCH CRS	Rwy Idg	TDZE	USAFI	MISSED APPROACH: Climb to 4000 on TCM TACAN R-345 to OYABO, then turn left via 215° course to intercept TCM R-267 to CUBIT. Hold, continue climb-hold to 4000. Cross OYABO at or above 5000.
108.5	345°	10,108	322	A	
		Appt Elev	322		
Radar or DME required		ATIS	SEATTLE APP CON	TOWER	GND CON
		135.825 270.1	126.5 377.15	124.8 259.3	118.175 279.65

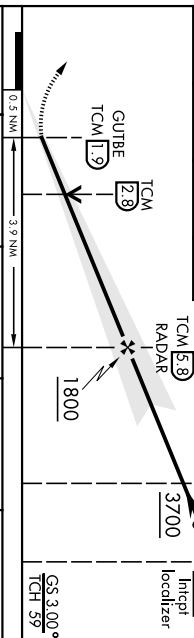
▲ *When AIS inop, increase RVR to 40' vis to ¾ mile. When TDZ/CL lights stop CAT AB RVR to 24'. **When AIS inop, increase RVR to 55', vis to 1 mile. CAT CD vis to 1/2 miles.

***Circling not authorized E of Rwy 16-34.



EMERG SAFE ALT 100 NM 16,600

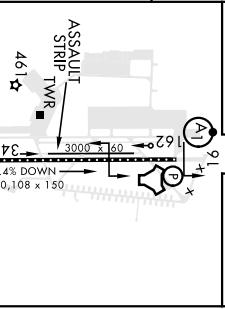
4000	OYABO	CRS	TCM
TCM R-345	TCM [6]	215°	R-267



CATEGORY	A	B	C	D
S-ILS 34*	522/18	200	200-1/2	
S-LOC 34**	860/40 538 (600-¾)	860/55 538 (600-1)	940-1¾ 618 (700-1¾)	940-2 618 (700-2)

***	CIRCLING	940-1 618 (700-1)	940-2 618 (700-2)
-----	----------	-------------------	-------------------

ELEV	322	TDZE	322
------	-----	------	-----



HRL Rwy 16-34	345°				
TDZ/CL Rwy 34	345°				
FAE to MAP 3.9 NM					
Min:Sec	3:54	2:36	1:57	1:34	1:18

TACOMA, WASHINGTON
 Arch 5 30NOV23
 47°08'N-122°29'W
 MCCHORD FLD (KTCM)
 ILS or LOC RWY 34

TACOMA, WASHINGTON

ARCH CRS
165° Rwy Idg **10.108**
 TDZE **286**
 Aprt Elev **322**

AL-41.4 [USAF]

RNAV (GPS) RWY 16

23110

MCCHORD FLD. (KTCM)

▼ * When ALS inop, increase CAT Ab vis to 1 mile.
 CAT GDE vis to 1/2 miles.
 ** Circling not authorized E of rwy 16-34.

ALS-F1

MISSED APPROACH: Climb to 4000 direct JODOR and hold. Continue climb in hold to 4000.

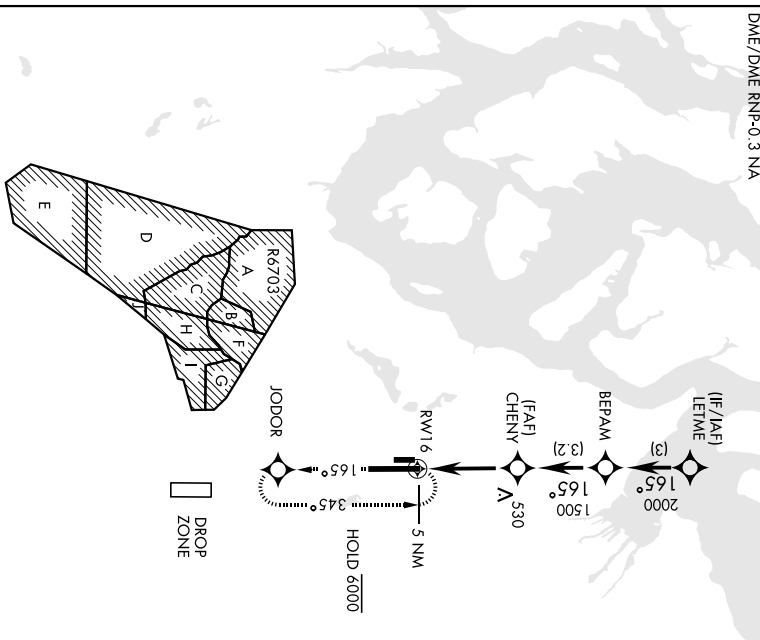
ATIS
135.825 270.1

SEATTLE APP CON
126.5 377.15

TOWER
124.8 259.3

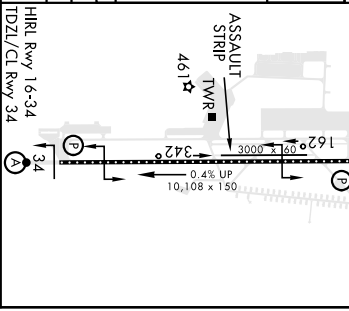
GND CON
118.175 279.65

DME/DME RNP-0.3 NA



EMERG SAFE ALT 100 NM 16,600

CATEGORY	A	B	C	D	E
UNAV MDA **	780/24	494 (500-4)	940-1 7/4	940-2	1020-2 1/2
CIRCLING **	940-1	618 (700-1)	618 (700-1 3/4)	618 (700-2)	698 (700-2 1/2)



TACOMA, WASHINGTON
 Arndt 4 20APR23
 MCCHORD FLD. (KTCM)

RNAV (GPS) RWY 16

TACOMA, WASHINGTON

RNAV (GPS) RWY 34

23110

AL-41.4 [USAF]

MCCHORD FLD. (KTCM)

ARCH CRS
345°
RWY Log 10,108
TDZE 322
Appr Elev 322

RADAR required.
* When AIS non, increase CAT AB RVR to 55,
vis to 1 mile; CAT CDE vis to 1 1/2 miles
** Circling not authorized E of rwy 16-34.

AISF-2
MISSED APPROACH: Climb to 4000 direct ZOSAV
and hold, continue climb in hold to 4000.

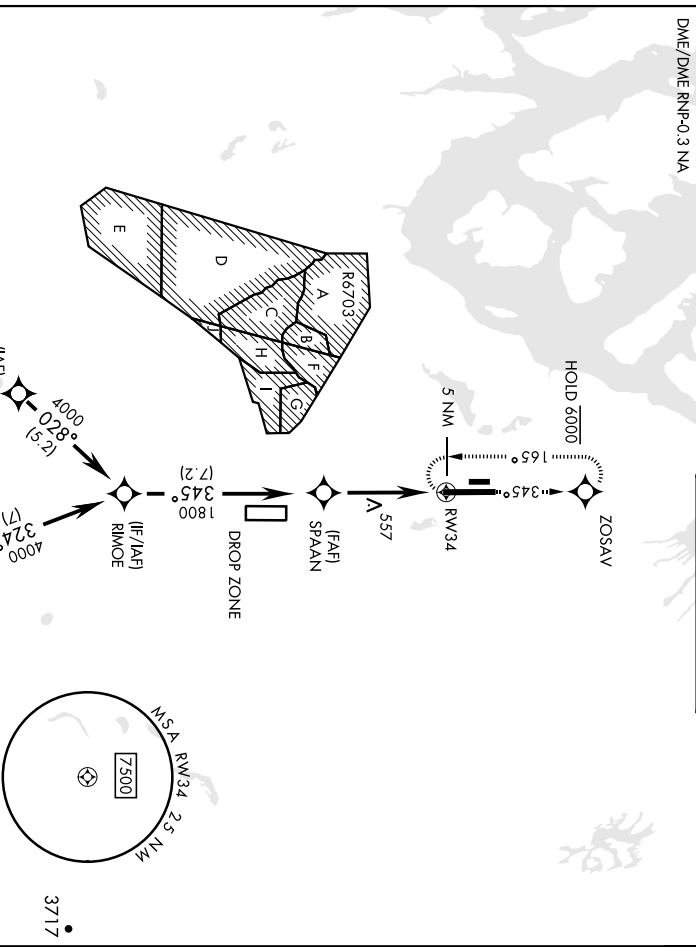
AIS
135.825 270.1

SEATTLE APP CON
126.5 377.15

TOWER
124.8 259.3

GND CON
118.175 279.65

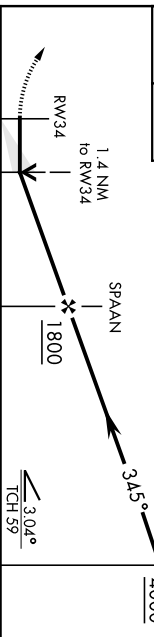
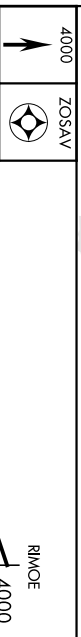
DME/DME RNP-0.3 NA



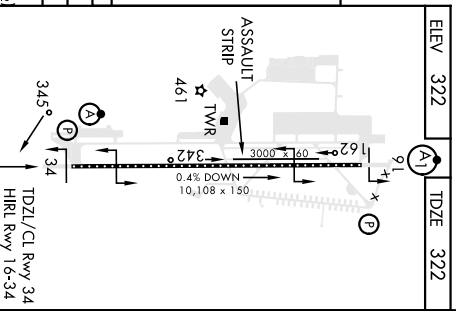
NW-1, 22 FEB 2024 to 21 MAR 2024

NW-1, 22 FEB 2024 to 21 MAR 2024

EMERG SAFE ALT 100 NM 16,600



CATEGORY	A	B	C	D	E
UNAV MDA **	820 / 24	498 (500-1/2)	820 / 50	498 (500-1)	
CIRCLING **	940-1	618 (700-1)	940-1 1/4	940-2	1020-2 1/2
	618 (700-1)	618 (700-2)	618 (700-2)	698 (700-2 1/2)	



TACOMA, WASHINGTON

47°08'N-122°29'W

MCCHORD FLD. (KTCM)

Arch 4 20APR23

RNAV (GPS) RWY 34

TACOMA, WASHINGTON

TACAN TCM Chon 33	APCH CRS 160°	Rwy Idg 10,108
	TDZE 286	TDZE Elev 322

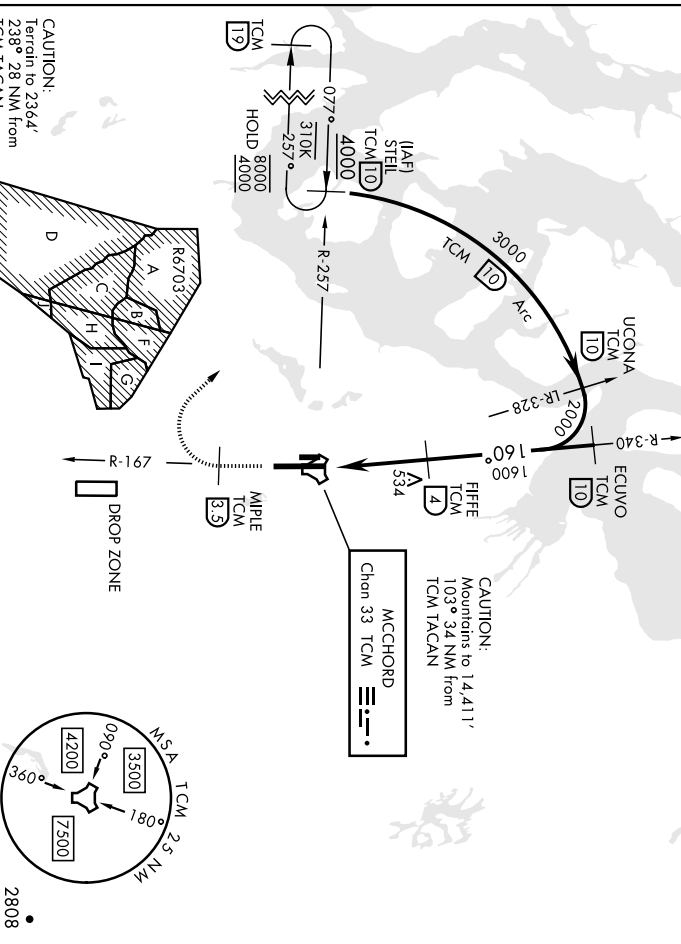
AL-414 [USAF]

* When ALS Inop, increase CAT AB RVR to 55,
vis to 1 mile, CAT CDE vis to 1 1/2 miles.
** Circling not authorized E of Rwy 16-34.



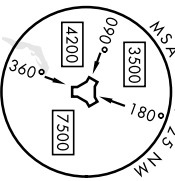
MISSED APPROACH: Climb to 4000 on TCM TACAN R-167.
At TCM 3.5 DME turn right via 295° course to intercept TCM
R-257 to STEEL and hold, continue climb-in-hold to 4000.

ATIS 135.825 270.1	SEATTLE APP CON 126.5 377.15	TOWER 124.8 259.3	GND CON 118.175 279.65
-----------------------	---------------------------------	----------------------	---------------------------

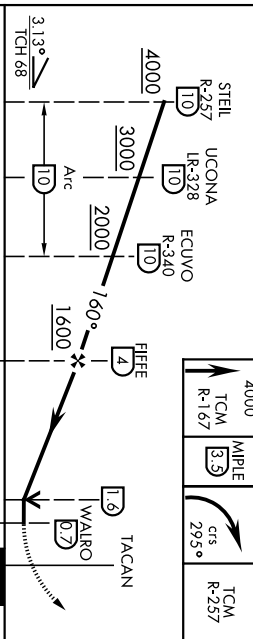


CAUTION:
Terrain to 2364'
238° 28 NM from
TCM TACAN

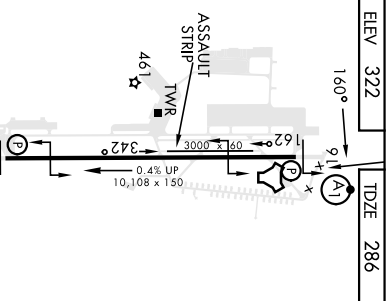
CAUTION:
Mountains to 14 411'
103° 34 NM from
TCM TACAN



EMERG SAFE ALT 100 NM 16,600

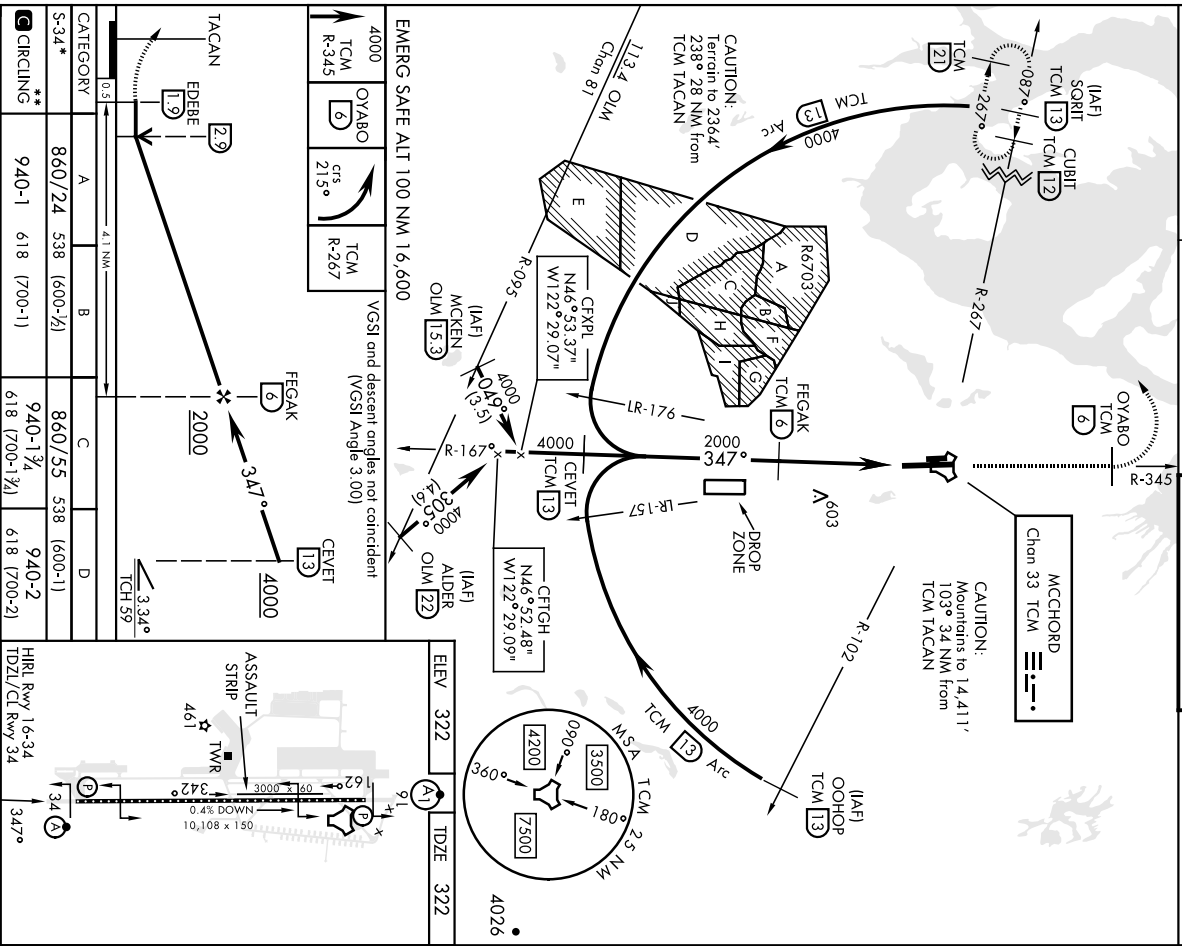


CATEGORY	A	B	C	D	E
S-16*	800/24	514 (500-1/2)	800/55	940-2	1020-2/2
DIRCLING**	940-1	514 (500-1)	800/55	940-2	1020-2/2
	618 (700-1)	618 (700-1)	618 (700-1 1/4)	618 (700-2)	698 (700-2 1/2)



TACAN TCM Chon 33	APCH CRS 347°	Req'd Idg TDZE Appt Elev	10,108 322 322	AL-414 [USAF]	TOWER	124.8 259.3	GND CON	118.175 279.65
AITS 135.825 270.1		SEATTLE APP CON	126.5 377.15	MISSED APPROACH: Climb to 4000 on TCM TACAN R-345 to OYABO, then turn left via 215° course to intercept TCM R-267 to CUBIT and hold. Cross OYABO or, if above 3000, Continue climb-hold to 4000.		AITS-2 		
AITS 135.825 270.1		SEATTLE APP CON	126.5 377.15	TOWER 124.8 259.3		GND CON 118.175 279.65		

▲ When AITS Inop, increase CAT AB RWY to 55 vis to 1 mile. CAT CD vis to 1½ miles. ** Circling not authorized E of Rwy 16-34.



NW-1, 22 FEB 2024 to 21 MAR 2024

NW-1, 22 FEB 2024 to 21 MAR 2024

TACOMA, WASHINGTON
 Amdt 5 20APR23
 TACAN RWY 34
 MCHORD FLD (KTTCM)