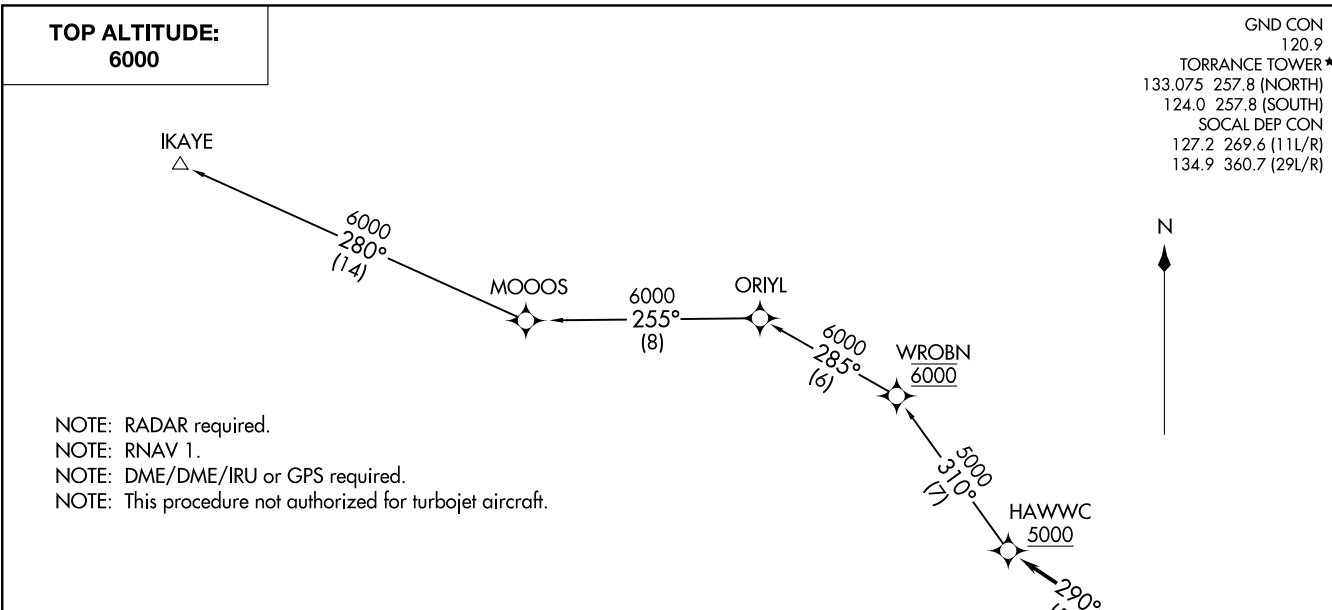


HAWWC THREE DEPARTURE (RNAV)
(HAWWC3.HAWWC) 19JUL18

(HAWWC3.HAWWC) 18200
HAWWC THREE DEPARTURE (RNAV)
AL-5179 (FAA)

ZAMPERINI FIELD (TOA)
TORRANCE, CALIFORNIA



DEPARTURE ROUTE DESCRIPTION

TAKEOFF RUNWAYS 11L/R: Climb heading 114° to 2700 for vectors to PIJIN, cross PIJIN at or above 4000, then on track 290° to cross HAWWC at or above 5000, thence

. . . . on (transition). Maintain 6000. Expect higher altitude 10 minutes after departure.

IKAYE TRANSITION (HAWWC3.IKAYE)

TAKEOFF MINIMUMS
 Rwy 11L/R: Standard with minimum climb of 325 feet per NM to 1600.
 Rwy 29L/R: NA-ATC.

NOTE: Chart not to scale.

TORRANCE, CALIFORNIA
ZAMPERINI FIELD (TOA)