

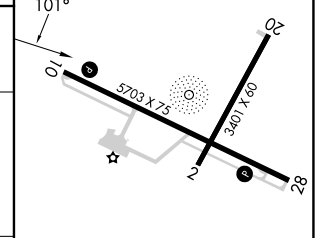
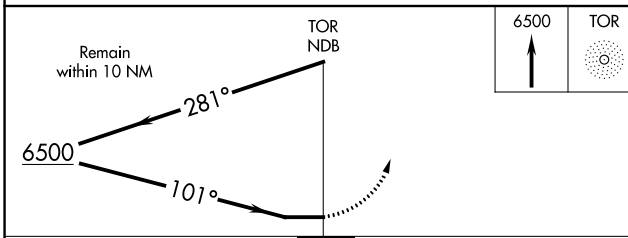
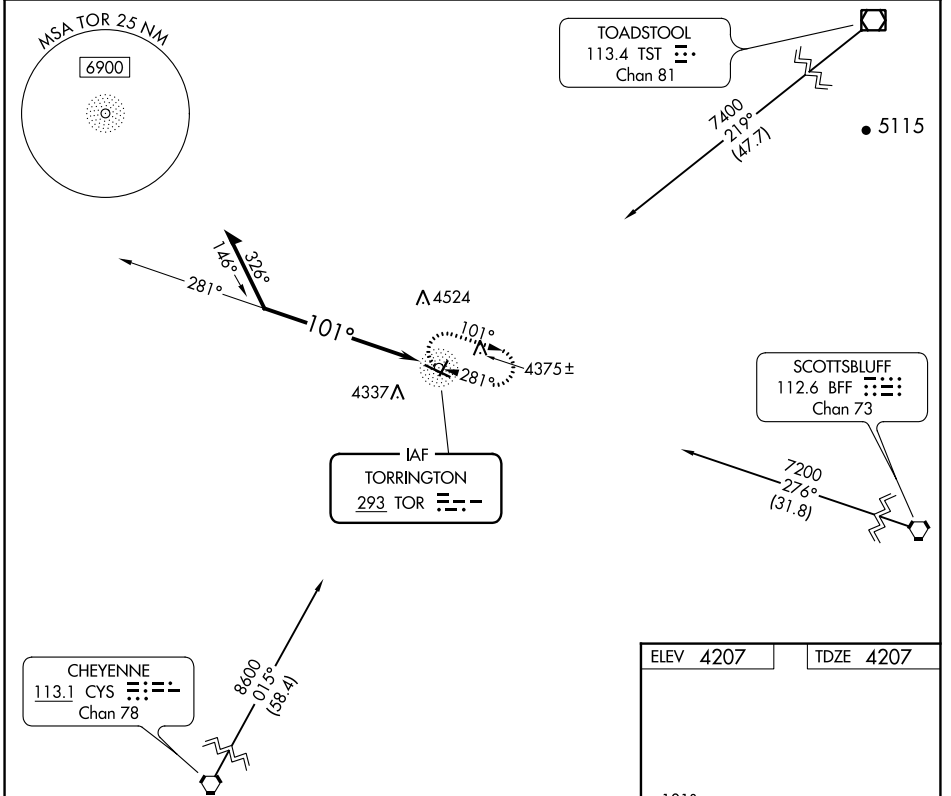
NDB TOR 293	APP CRS 101°	Rwy Idg TDZE Apt Elev	5703 4207 4207
-----------------------	------------------------	-----------------------------	---

NDB RWY 10
TORRINGTON MUNI (TOR)

▽
▲

MISSED APPROACH: Climb to 6500 in TOR NDB holding pattern.

ASOS 118.375	DENVER CENTER 127.95 338.2	UNICOM 122.8 (CTAF) 0
------------------------	--------------------------------------	---------------------------------



CATEGORY	A	B	C	D
S-10	5040-1 833 (900-1)	5040-1¼ 833 (900-1¼)	5040-2½	833 (900-2½)
CIRCLING	5040-1¼	833 (900-1¼)	5040-2½ 833 (900-2½)	5040-2¾ 833 (900-2¾)

ELEV 4207 | TDZE 4207

REIL Rwy 28 0

MIRL Rwy 10-28 0

NW-1, 22 FEB 2024 to 21 MAR 2024

NW-1, 22 FEB 2024 to 21 MAR 2024

NDB TOR 293	APP CRS 296°	Rwy Idg 5703
		TDZE 4202
		Apt Elev 4207

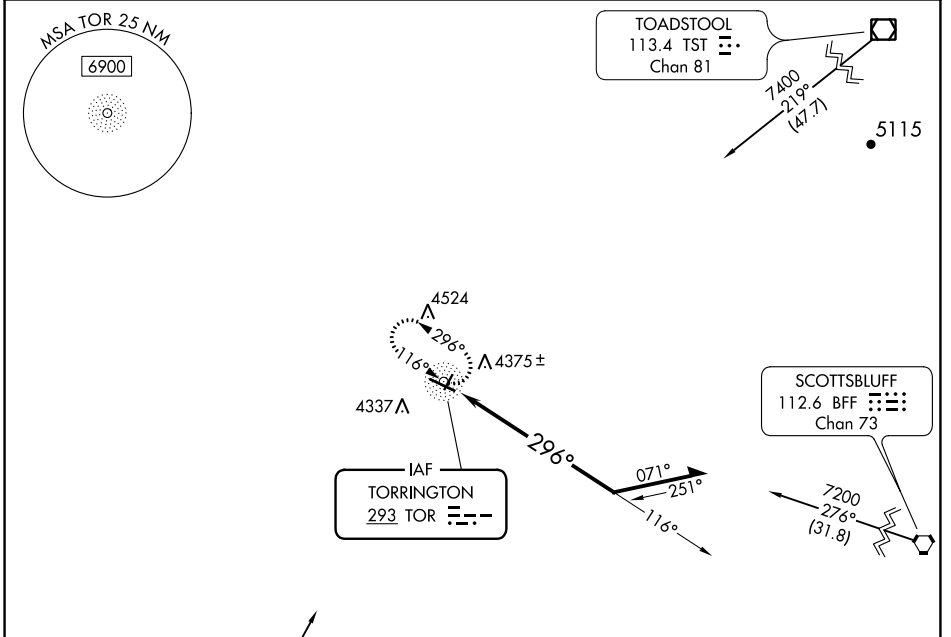
NDB RWY 28

TORRINGTON MUNI (TOR)

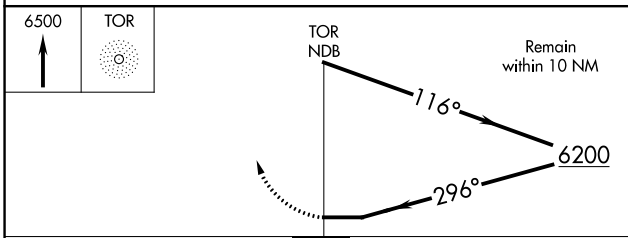
▼ Procedure NA at night.
▲ Rwy 28 helicopter visibility reduction below 1 SM NA.

MISSED APPROACH: Climb to 6500 in TOR NDB holding pattern.

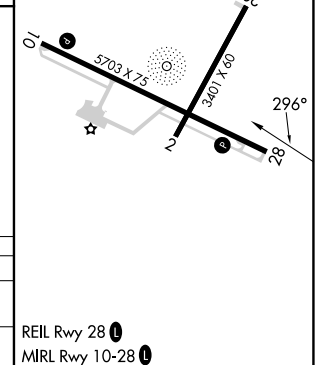
ASOS 118.375	DENVER CENTER 127.95 338.2	UNICOM 122.8 (CTAF) 0
------------------------	--------------------------------------	---------------------------------



ELEV 4207	TDZE 4202
-----------	-----------



CATEGORY	A	B	C	D
S-28	4780-1	578 (600-1)	4780-1¾	578 (600-1¾)
CIRCLING	4780-1	573 (600-1)	4880-2 673 (700-2)	4960-2¼ 753 (800-2¼)



NW-1, 22 FEB 2024 to 21 MAR 2024

NW-1, 22 FEB 2024 to 21 MAR 2024

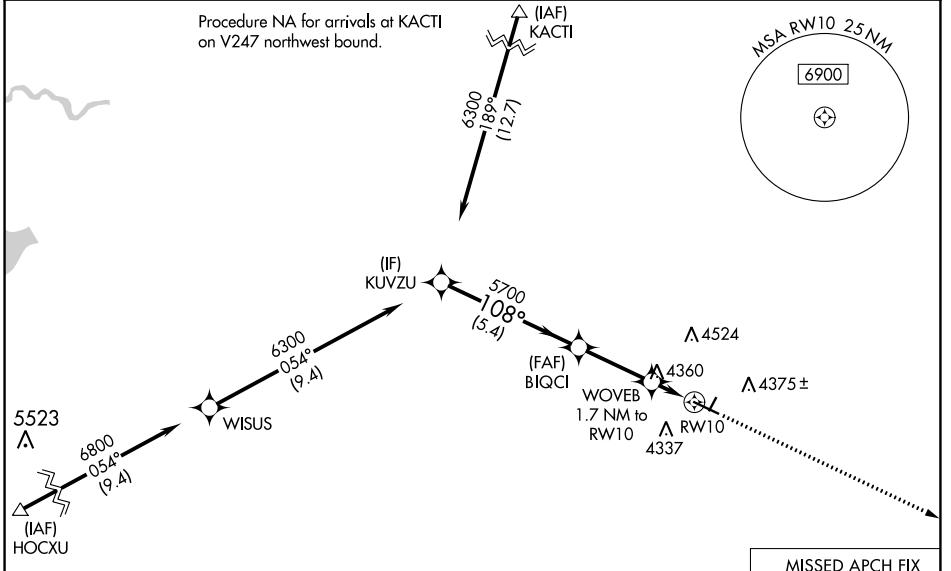
WAAS CH 61344 W10A	APP CRS 108°	Rwy Idg 5703 TDZE 4207 Apt Elev 4207
--	------------------------	---

RNAV (GPS) RWY 10

TORRINGTON MUNI (TOR)

RNP APCH - GPS.	MISSED APPROACH: Climb to 6200 direct CIKSI and hold.
<p>▼ For uncompensated Baro-VNAV systems, LNAV/VNAV NA below -26°C or above 54°C.</p>	

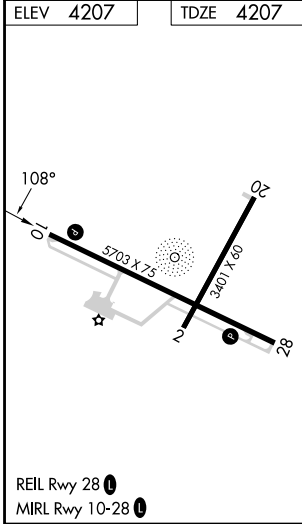
ASOS 118.375	DENVER CENTER 127.95 338.2	UNICOM 122.8 (CTAF) 0
------------------------	--------------------------------------	---------------------------------



NW-1, 22 FEB 2024 to 21 MAR 2024

NW-1, 22 FEB 2024 to 21 MAR 2024

ELEV 4207	TDZE 4207
------------------	------------------



KUVZU 6300	BIQCI 5700	WOVEB 1.7 NM to RWY10	RWY10	6200	CIKSI
				GP 3.00° TCH 40	
5.4 NM		2.9 NM		1.7 NM	
CATEGORY	A	B	C	D	
LPV DA	4457-1		250 (300-1)		
LNAV/VNAV DA	4468-1		261 (300-1)		
LNAV MDA	4660-1	453 (500-1)	4660-1 3/8	453 (500-1 3/8)	
CIRCLING	4740-1	533 (600-1)	4880-2 673 (700-2)	4960-2 1/2 753 (800-2 1/2)	

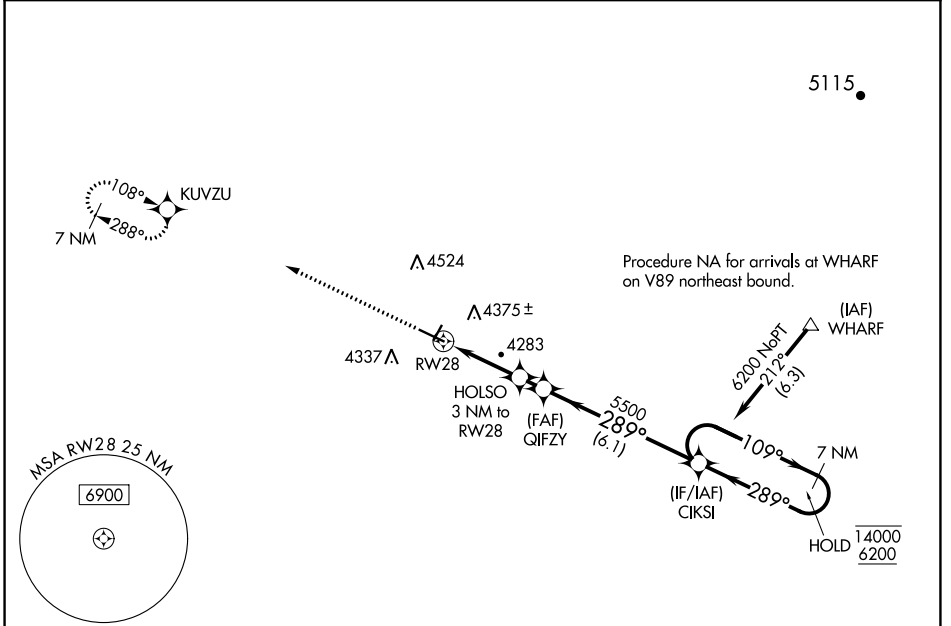
WAAS CH 66044 W28A	APP CRS 289°	Rwy Idg 5703 TDZE 4202 Apt Elev 4207
--	------------------------	---

RNAV (GPS) RWY 28

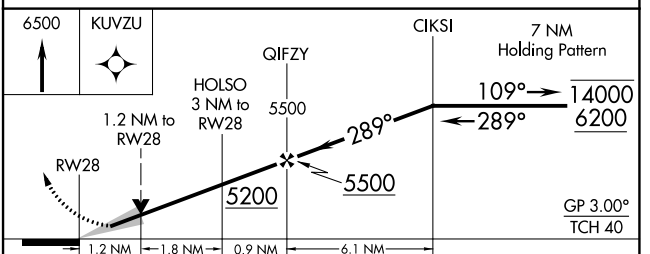
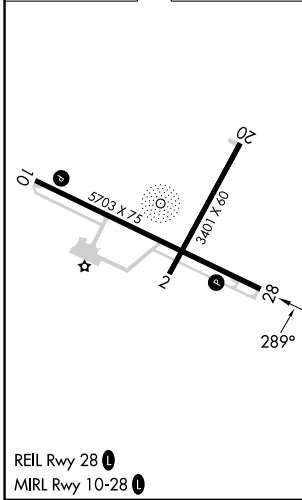
TORRINGTON MUNI (TOR)

RNP APCH - GPS.	MISSED APPROACH: Climb to 6500 direct KUVZU and hold.
<p>▼ For uncompensated Baro-VNAV systems, LNAV/VNAV NA below -26°C or above 54°C.</p>	

ASOS 118.375	DENVER CENTER 127.95 338.2	UNICOM 122.8 (CTAF) 0
------------------------	--------------------------------------	---------------------------------



ELEV 4207	TDZE 4202
------------------	------------------



CATEGORY	A	B	C	D
LPV DA	4452-3/4 250 (300-3/4)			
LNAV/VNAV DA	4560-1 358 (400-1)			
LNAV MDA	4620-1	418 (500-1)	4620-1 1/8	418 (500-1 1/8)
CIRCLING	4740-1	533 (600-1)	4880-2 673 (700-2)	4960-2 1/2 753 (800-2 1/2)

NW-1, 22 FEB 2024 to 21 MAR 2024

NW-1, 22 FEB 2024 to 21 MAR 2024