

WAAS CH 99626 W18A	APP CRS 176°	Rwy Idg 3907 TDZE 757 Apt Elev 758
--	------------------------	---

RNAV (GPS) RWY 18

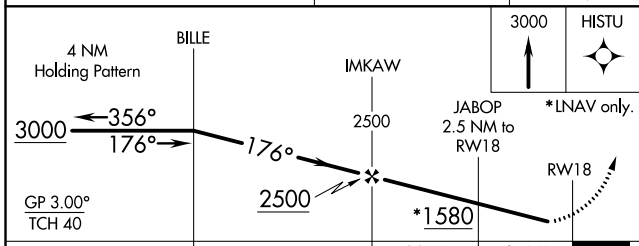
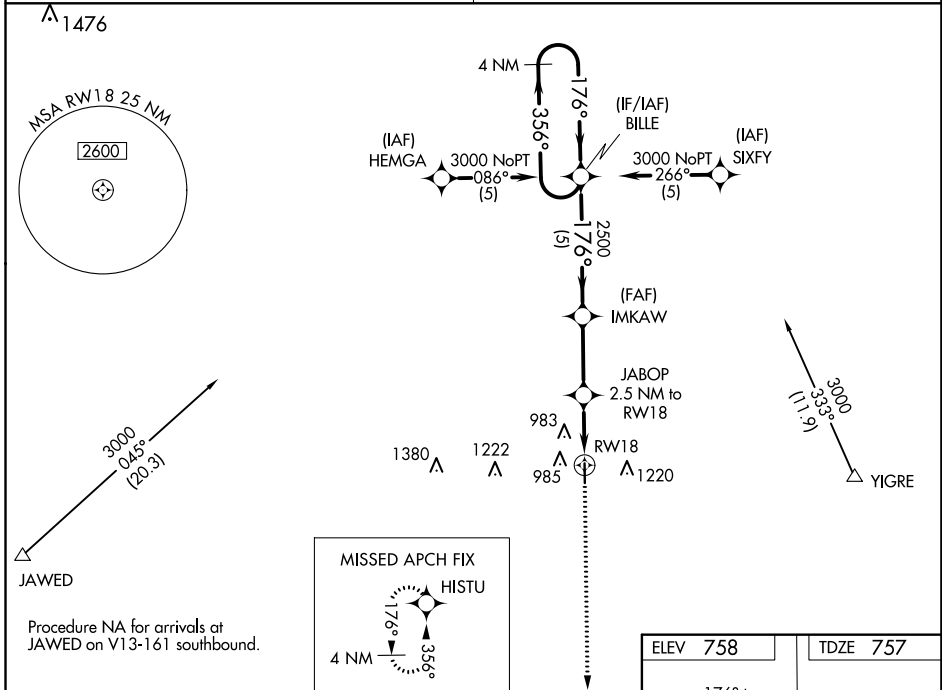
TRENTON MUNI (TRX)

NA Baro-VNAV NA. Use Chillicothe altimeter setting; when not received, use Kirksville altimeter setting and increase LPV DA to 1191 feet and all visibilities $\frac{3}{8}$ SM, LNAV/VNAV DA to 1341 feet and all visibilities $\frac{1}{4}$ SM; increase all MDAs 100 feet and Circling Cat B visibility $\frac{1}{4}$ SM. DME/DME RNP-0.3 NA. Helicopter visibility reduction below $\frac{3}{4}$ SM NA.

MISSED APPROACH: Climb to 3000 direct HISTU and hold.

KANSAS CITY CENTER **125.25 235.975**

UNICOM **122.8 (CTAF) 0**



ELEV 758	TDZE 757
176° to RWY 18	8 L
	4307 X75
	36
MRL Rwy 18-36 0	REIL Rwy 18 and 36 0

CATEGORY	A	B	C	D
LPV DA	1098-1 $\frac{1}{8}$	341 (400-1 $\frac{1}{8}$)		NA
LNAV/VNAV DA	1248-1 $\frac{3}{4}$	491 (500-1 $\frac{3}{4}$)		NA
LNAV MDA	1180-1	423 (500-1)		NA
CIRCLING	1340-1 582 (600-1)	1700-1 $\frac{1}{4}$ 942 (1000-1 $\frac{1}{4}$)		NA

NC-3, 27 JAN 2022 to 24 FEB 2022

NC-3, 27 JAN 2022 to 24 FEB 2022

WAAS CH 63126 W36A	APP CRS 356°	Rwy Idg 4307 TDZE 757 Apt Elev 758
--	------------------------	---

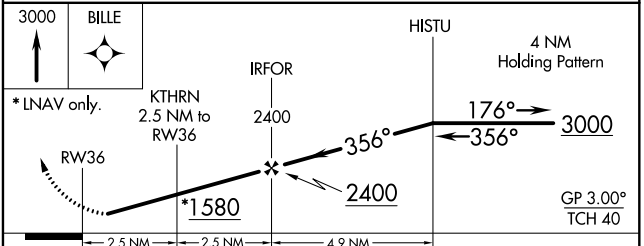
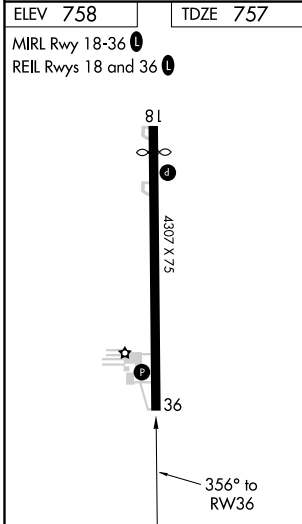
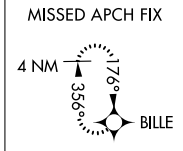
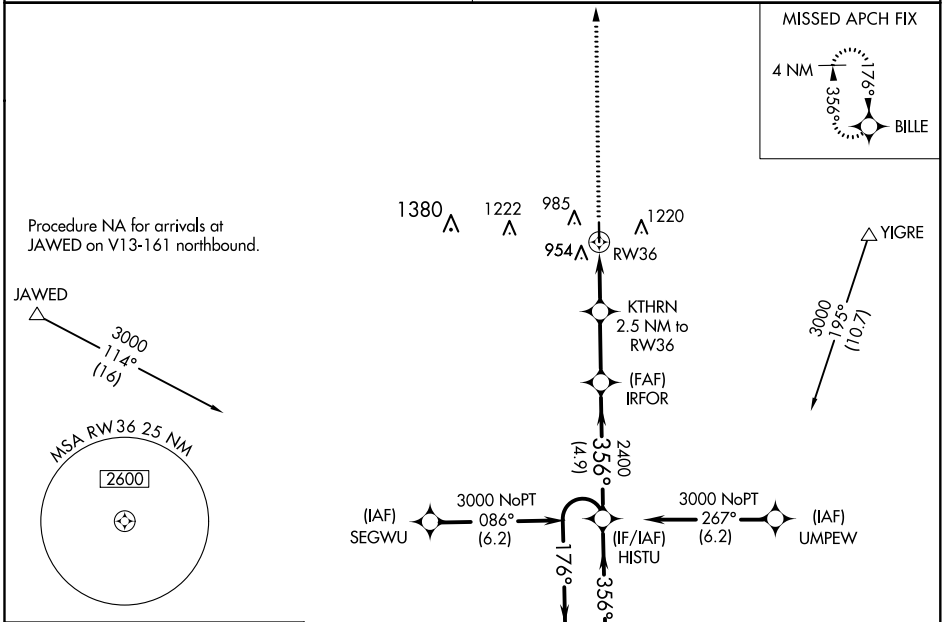
RNAV (GPS) RWY 36

TRENTON MUNI (TRX)

NA When VGSI inop, Circling Rwy 18 NA at night. Baro-VNAV NA. Use Chillicothe altimeter setting; when not received, use Kirksville altimeter setting and increase LPV DA to 1175 feet and all visibilities ¼ SM, LNAV/VNAV DA to 1288 feet and all visibilities ⅓ SM; increase all MDAs 100 feet and Circling Cat B visibility ¼ SM. DME/DME RNP-0.3 NA. Visibility reduction by helicopters NA.

MISSED APPROACH: Climb to 3000 direct BILLE and hold.

KANSAS CITY CENTER 125.25 235.975	UNICOM 122.8 (CTAF) 0
---	---------------------------------



CATEGORY	A	B	C	D
LPV DA	1082-1 1/8	325 (400-1 1/8)		NA
LNAV/VNAV DA	1195-1 1/2	438 (500-1 1/2)		NA
LNAV MDA	1320-1	563 (600-1)		NA
CIRCLING	1340-1 582 (600-1)	1700-1 1/4 942 (1000-1 1/4)		NA

NC-3, 27 JAN 2022 to 24 FEB 2022

NC-3, 27 JAN 2022 to 24 FEB 2022