

(BARI2.BARII) 19227

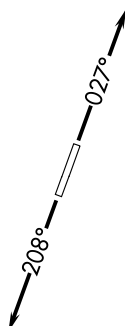
BARII TWO DEPARTURE (RNAV)

AL-5642 (FAA)

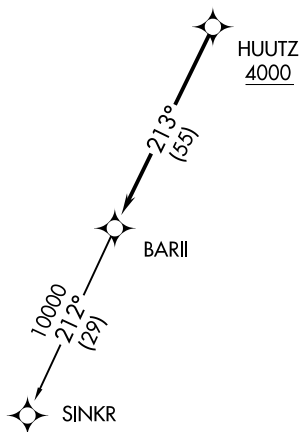
CUSTER (TTF)
MONROE, MICHIGAN

**TOP ALTITUDE:
ASSIGNED BY ATC**

AWOS-3
119.075
CTAF
122.7
DETROIT DEP CON
134.3 284.0



TAKEOFF MINIMUMS:
Standard.



- NOTE: RNAV 1.
- NOTE: RADAR required.
- NOTE: DME/DME/IRU or GPS required.
- NOTE: Turbojet departures at/above 10000, maintain 280K until advised by ATC.

NOTE: Chart not to scale.

EC-1, 22 FEB 2024 to 21 MAR 2024

EC-1, 22 FEB 2024 to 21 MAR 2024



DEPARTURE ROUTE DESCRIPTION

TAKEOFF RUNWAY 3: Climb on heading 027° or as assigned for RADAR vectors to cross HUUTZ at or above 4000, thence....

TAKEOFF RUNWAY 21: Climb on heading 208° or as assigned for RADAR vectors to cross HUUTZ at or above 4000, thence....

....on track 213° to BARII, then on (transition). Maintain ATC assigned altitude, expect filed altitude 10 minutes after departure.

SINKR TRANSITION (BARI2.SINKR):

BARII TWO DEPARTURE (RNAV)

(BARI2.BARII) 15AUG19

MONROE, MICHIGAN
CUSTER (TTF)

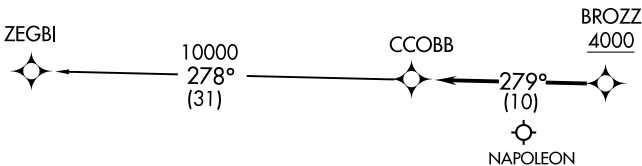
AWOS-3
119.075
CTAF
122.7
DETROIT DEP CON
134.3 284.0

(CCOBB2.CCOBB) 20142
CCOBB TWO DEPARTURE (RNAV)

AL-5642 (FAA)

CUSTER (TTF)
MONROE, MICHIGAN

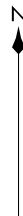
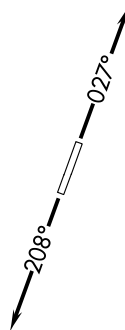
**TOP ALTITUDE:
ASSIGNED BY ATC**



TAKEOFF MINIMUMS:
Standard.

- NOTE: RNAV 1.
- NOTE: RADAR required.
- NOTE: DME/DME/IRU or GPS required.
- NOTE: Turbojet departures at/above 10000, maintain 280K until advised by ATC.
- NOTE: For use by aircraft filed at or below FL220, or as assigned by ATC.
- NOTE: CAUTION: Parachute jumping 6 NM SW of BROZZ, 3 NM radius of Napoleon Airport (3NP) at or below 17999 (SR-SS).

NOTE: Chart not to scale.



DEPARTURE ROUTE DESCRIPTION

TAKEOFF RUNWAY 3: Climb on heading 027° or as assigned for RADAR vectors to cross BROZZ at or above 4000, thence....
TAKEOFF RUNWAY 21: Climb on heading 208° or as assigned for RADAR vectors to cross BROZZ at or above 4000, thence....

....on track 279° to CCOBB, then on (transition). Maintain ATC assigned altitude, expect filed altitude 10 minutes after departure.

ZEGBI TRANSITION (CCOBB2.ZEGBI):

CCOBB TWO DEPARTURE (RNAV)
(CCOBB2.CCOBB) 15AUG19

MONROE, MICHIGAN
CUSTER (TTF)

(CLVIN2.CLVIN) 19227

CLVIN TWO DEPARTURE (RNAV)

AL-5642 (FAA)

CLUSTER (TTF)
MONROE, MICHIGAN

**TOP ALTITUDE:
ASSIGNED BY ATC**

AWOS-3
119.075
CTAF
122.7
DETROIT DEP CON
134.3 284.0

TAKEOFF MINIMUMS:
Standard.

NOTE: RNAV 1.
NOTE: RADAR required.
NOTE: DME/DME/IRU or GPS required.
NOTE: Turbojet departures at/above 10000,
maintain 280K until advised by ATC.

NOTE: Chart not to scale.

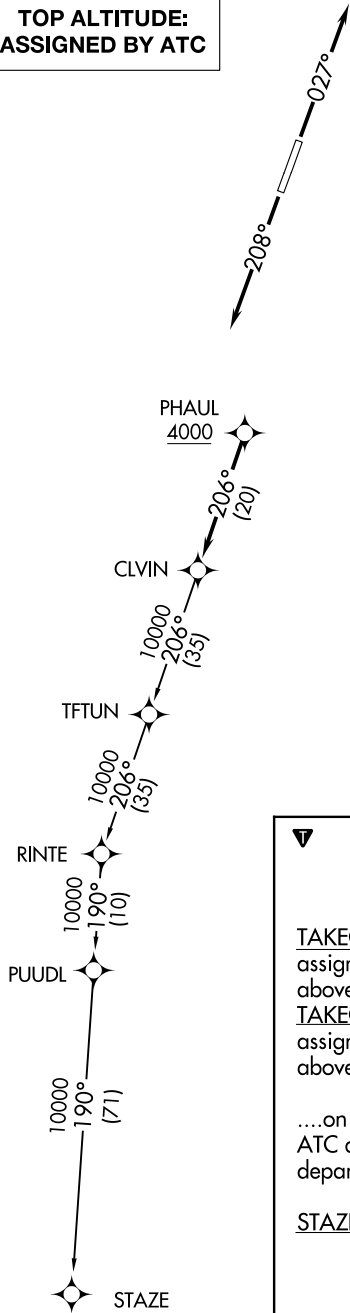
DEPARTURE ROUTE DESCRIPTION

TAKEOFF RUNWAY 3: Climb on heading 027° or as assigned for RADAR vectors to cross PHAUL at or above 4000, thence....

TAKEOFF RUNWAY 21: Climb on heading 208° or as assigned for RADAR vectors to cross PHAUL at or above 4000, thence....

...on track 206° to CLVIN, then on (transition). Maintain ATC assigned altitude, expect filed altitude 10 minutes after departure.

STAZE TRANSITION (CLVIN2.STAZE):



EC-1, 22 FEB 2024 to 21 MAR 2024

EC-1, 22 FEB 2024 to 21 MAR 2024

CLVIN TWO DEPARTURE (RNAV)
(CLVIN2.CLVIN) 15AUG19

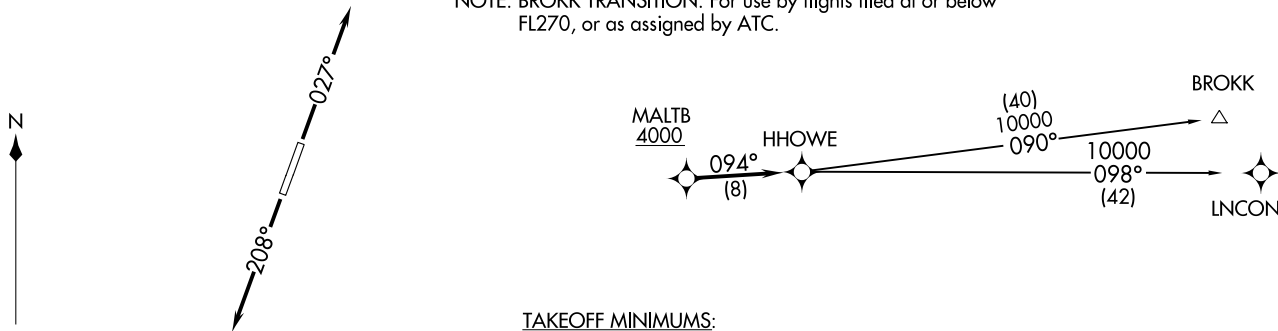
MONROE, MICHIGAN
CLUSTER (TTF)

HHOWE THREE DEPARTURE (RNAV)
 (HHOWE3.HHOWE) 05DEC19

AWOS-3
 119.075
 CTAF
 122.7
 DETROIT DEP CON
 134.3 284.0

**TOP ALTITUDE:
 ASSIGNED BY ATC**

NOTE: RNAV 1.
 NOTE: RADAR required.
 NOTE: DME/DME/IRU or GPS required.
 NOTE: Turbojet departures at/above 10000,
 maintain 280K until advised by ATC.
 NOTE: BROKK TRANSITION: For use by flights filed at or below
 FL270, or as assigned by ATC.



TAKEOFF MINIMUMS:
 Standard.

NOTE: Chart not to scale.

DEPARTURE ROUTE DESCRIPTION

TAKEOFF RUNWAY 3: Climb on heading 027° or as assigned for RADAR vectors to cross MALTB at or above 4000, thence....
TAKEOFF RUNWAY 21: Climb on heading 208° or as assigned for RADAR vectors to cross MALTB at or above 4000, thence....
on track 094° to HHOWE, then on (transition). Maintain ATC assigned altitude, expect filed altitude 10 minutes after departure.

BROKK TRANSITION (HHOWE3.BROKK)
LNCON TRANSITION (HHOWE3.LNCON)

MORROE, MICHIGAN
 CUSTER (TTF)

(HHOWE3.HHOWE) 19339
 HHOWE THREE DEPARTURE (RNAV) AL-5642 (FAA)

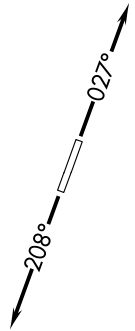
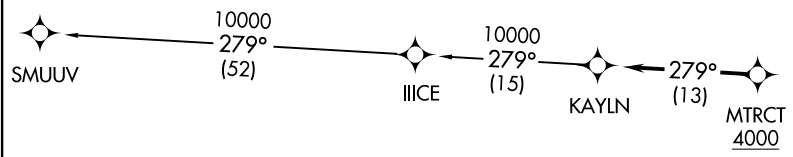
CUSTER (TTF)
 MORROE, MICHIGAN

KAYLN TWO DEPARTURE (RNAV)
(KAYLN2.KAYLN) 15AUG19

**TOP ALTITUDE:
ASSIGNED AT ATC**

TAKEOFF MINIMUMS:
Standard.

AWOS-3
119.075
CTAF
122.7
DETROIT DEP CON
134.3 284.0



NOTE: RNAV 1.
NOTE: RADAR required.
NOTE: DME/DME/IRU or GPS required.
NOTE: Turbojet departures at/above 10000,
maintain 280K until advised by ATC.

NOTE: Chart not to scale.

(KAYLN2.KAYLN) 19Z27
KAYLN TWO DEPARTURE (RNAV)

AL-5642 (FAA)

DEPARTURE ROUTE DESCRIPTION

TAKEOFF RUNWAY 3: Climb on heading 027° or as assigned for RADAR vectors to cross MTRCT at or above 4000, thence...
TAKEOFF RUNWAY 21: Climb on heading 208° or as assigned for RADAR vectors to cross MTRCT at or above 4000, thence....

....on track 279° to KAYLN, then on (transition). Maintain ATC assigned altitude, expect filed altitude 10 minutes after departure.

SMUUV TRANSITION (KAYLN2.SMUUV):

MONROE, MICHIGAN
CUSTER (TTF)

CUSTER (TTF)
MONROE, MICHIGAN

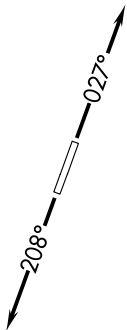
KZLOV ONE DEPARTURE (RNAV)
(KZLOV1, WINNZ) 14U122

AWOS-3
119.075
CTAF
122.7
DETROIT DEP CON
134.3 284.0

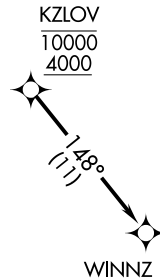
RNAV 1 - DME/DME/IRU or GPS.

**TOP ALTITUDE:
ASSIGNED BY ATC**

RADAR required.



NOTE: Turbojet departures at/above 10000,
maintain 280K until advised by ATC.
NOTE: For use by Cleveland terminal arrivals only.



TAKEOFF MINIMUMS:

Rwy 3, 21: Standard with minimum climb
of 500' per NM to 1116.

NOTE: Chart not to scale.

DEPARTURE ROUTE DESCRIPTION

TAKEOFF RUNWAY 3: Climb on heading 027° or as assigned for RADAR vectors to cross KZLOV at or above 4000 and at or below 10000, thence....

TAKEOFF RUNWAY 21: Climb on heading 208° or as assigned for RADAR vectors to cross KZLOV at or above 4000 and at or below 10000, thence....

....on track 148° to WINNZ. Maintain assigned altitude, expect filed altitude ten minutes after departure.

MONROE, MICHIGAN
CUSTER (TTF)

(KZLOV1, WINNZ) 22195
KZLOV ONE DEPARTURE (RNAV)

A1-5642 (FAA)

CUSTER (TTF)
MONROE, MICHIGAN

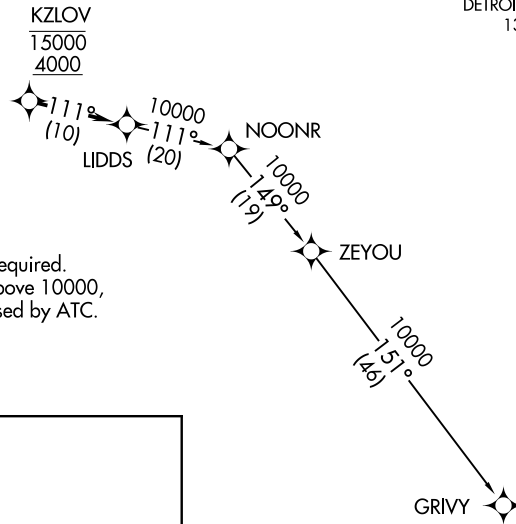
**TOP ALTITUDE:
ASSIGNED BY ATC**

AWOS-3
119.075
CTAF
122.7
DETROIT DEP CON
134.3 284.0

LIDDS TWO DEPARTURE (RNAV)
(LIDDS2.LIDDS) 15AUG19

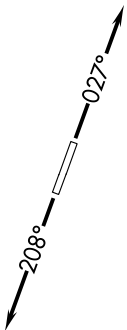
(LIDDS2.LIDDS) 2111Z
LIDDS TWO DEPARTURE (RNAV)
AL-5642 (FAA)

CLUSTER (TTF)
MONROE, MICHIGAN



TAKEOFF MINIMUMS:
Standard.

NOTE: RNAV 1.
NOTE: RADAR required.
NOTE: DME/DME/IRU or GPS required.
NOTE: Turbojet departures at/above 10000,
maintain 280K until advised by ATC.



DEPARTURE ROUTE DESCRIPTION

TAKEOFF RUNWAY 3: Climb on heading 027° or as assigned for RADAR vectors to cross KZLOV between 4000 and 15000, thence....

TAKEOFF RUNWAY 21: Climb on heading 208° or as assigned for RADAR vectors to cross KZLOV between 4000 and 15000, thence....

....on track 111° to LIDDS, then on (transition). Maintain ATC assigned altitude, expect filed altitude 10 minutes after departure.

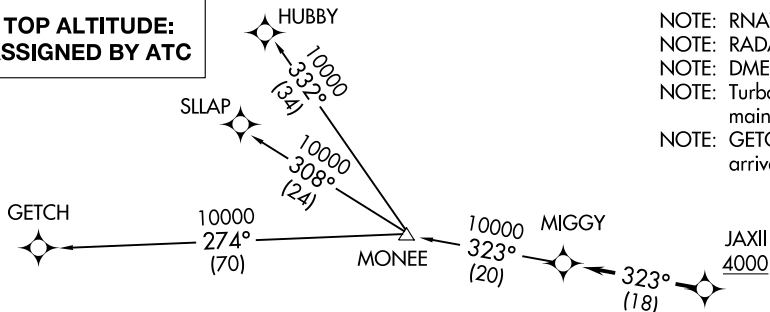
GRIVY TRANSITION (LIDDS2.GRIVY):

NOTE: Chart not to scale.

MONROE, MICHIGAN
CLUSTER (TTF)

MIGGY TWO DEPARTURE (RNAV)
(MIGGY2.MIGGY) 15AUG19

**TOP ALTITUDE:
ASSIGNED BY ATC**



- NOTE: RNAV 1.
- NOTE: RADAR required.
- NOTE: DME/DME/IRU or GPS required.
- NOTE: Turbojet departures at/above 10000, maintain 280K until advised by ATC.
- NOTE: GETCH TRANSITION: For use by KMKE area arrivals only, or as assigned by ATC.

AWOS-3
119.075
CTAF
122.7
DETROIT DEP CON
134.3 284.0

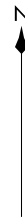
TAKEOFF MINIMUMS:
Standard.

DEPARTURE ROUTE DESCRIPTION

TAKEOFF RUNWAY 3: Climb on heading 027° or as assigned for RADAR vectors to cross JAXII at or above 4000, thence....
TAKEOFF RUNWAY 21: Climb on heading 208° or as assigned for RADAR vectors to cross JAXII at or above 4000, thence....

....on track 323° to MIGGY, then on (transition). Maintain ATC assigned altitude, expect filed altitude 10 minutes after departure.

- GETCH TRANSITION (MIGGY2.GETCH):
- HUBBY TRANSITION (MIGGY2.HUBBY):
- SLLAP TRANSITION (MIGGY2.SLLAP):



NOTE: Chart not to scale.

MONROE, MICHIGAN
CUSTER (TTT)
(MIGGY2.MIGGY) 15AUG19

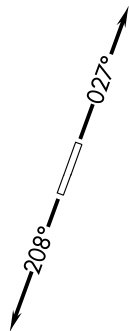
(MIGGY2.MIGGY) 19227
MIGGY TWO DEPARTURE (RNAV)

AL-5642 (FAA)

CUSTER (TTT)
MONROE, MICHIGAN

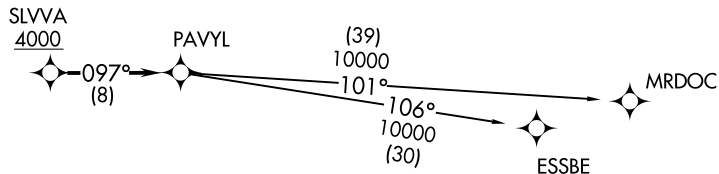
PAVYL TWO DEPARTURE (RNAV)
(PAVYL2.PAVYL) 15AUG19

**TOP ALTITUDE:
ASSIGNED BY ATC**



NOTE: RNAV 1.
NOTE: RADAR required.
NOTE: DME/DME/IRU or GPS required.
NOTE: Turbojet departures at/above 10000,
maintain 280K until advised by ATC.

AWOS-3
119.075
CTAF
122.7
DETROIT DEP CON
134.3 284.0



TAKEOFF MINIMUMS:
Standard.

NOTE: Chart not to scale.

(PAVYL2.PAVYL) 192ZZ
PAVYL TWO DEPARTURE (RNAV)

AL-5642 (FAA)



DEPARTURE ROUTE DESCRIPTION

TAKEOFF RUNWAY 3: Climb on heading 027° or as assigned for RADAR vectors to cross SLVVA at or above 4000, thence....
TAKEOFF RUNWAY 21: Climb on heading 208° or as assigned for RADAR vectors to cross SLVVA at or above 4000, thence....
....on track 097° to PAVYL, then on (transition). Maintain ATC assigned altitude, expect filed altitude 10 minutes after departure.

ESSBE TRANSITION (PAVYL2.ESSBE):
MRDOC TRANSITION (PAVYL2.MRDOC):

MONROE, MICHIGAN
CUSTER (TTT)

CUSTER (TTT)
MONROE, MICHIGAN

SNDRS TWO DEPARTURE (RNAV)
(SNDRS2.SNDRS) 15AUG19

DEPARTURE ROUTE DESCRIPTION

TAKEOFF RUNWAY 3: Climb on heading 027° or as assigned for RADAR vectors to cross JWELS at or above 4000, thence....

TAKEOFF RUNWAY 21: Climb on heading 208° or as assigned for RADAR vectors to cross JWELS at or above 4000, thence....

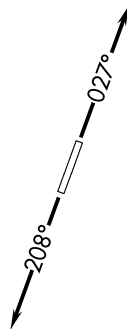
....on track 218° to SNDRS, then on (transition). Maintain ATC assigned altitude, expect filed altitude 10 minutes after departure.

BGHRT TRANSITION (SNDRS2.BGHRT):

TORRR TRANSITION (SNDRS2.TORRR):

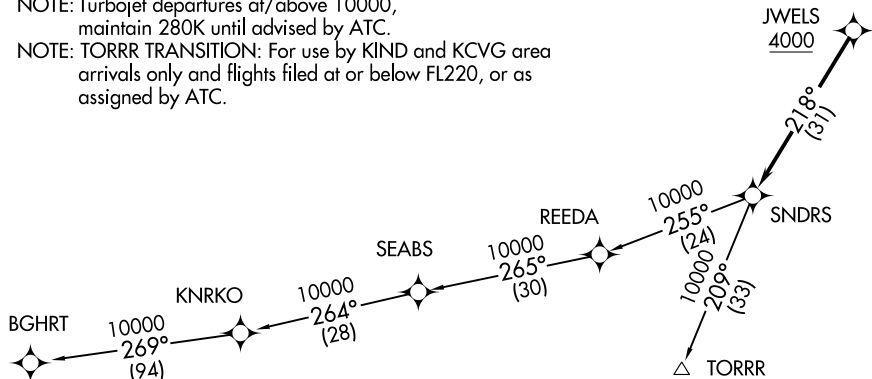
TOP ALTITUDE: ASSIGNED BY ATC

AWOS-3
119.075
CTAF
122.7
DETROIT DEP CON
134.3 284.0



TAKEOFF MINIMUMS:
Standard.

- NOTE: RNAV 1.
- NOTE: RADAR required.
- NOTE: DME/DME/IRU or GPS required.
- NOTE: Turbojet departures at/above 10000, maintain 280K until advised by ATC.
- NOTE: TORRR TRANSITION: For use by KIND and KCVG area arrivals only and flights filed at or below FL220, or as assigned by ATC.



NOTE: Chart not to scale.

MONROE, MICHIGAN
CUSTER (TTT)

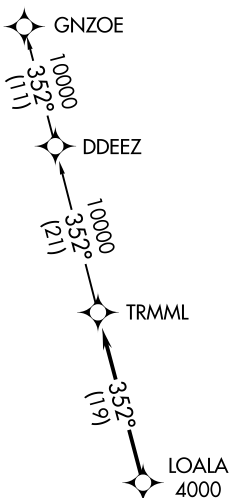
CUSTER (TTT)
MONROE, MICHIGAN

AL-5642 (FAA)

(SNDRS2.SNDRS) 1922Z
SNDRS TWO DEPARTURE (RNAV)

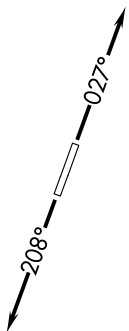
**TOP ALTITUDE:
ASSIGNED BY ATC**

AWOS-3
119.075
CTAF
122.7
DETROIT DEP CON
134.3 284.0



TAKEOFF MINIMUMS:
Standard.

- NOTE: RNAV 1.
- NOTE: RADAR required.
- NOTE: DME/DME/IRU or GPS required.
- NOTE: Turbojet departures at/above 10000, maintain 280K until advised by ATC.



NOTE: Chart not to scale.



DEPARTURE ROUTE DESCRIPTION

TAKEOFF RUNWAY 3: Climb on heading 027° or as assigned for RADAR vectors to cross LOALA at or above 4000, thence....

TAKEOFF RUNWAY 21: Climb on heading 208° or as assigned for RADAR vectors to cross LOALA at or above 4000, thence....

....on track 352° to TRMML, then on (transition). Maintain ATC assigned altitude, expect filed altitude 10 minutes after departure.

GNZOE TRANSITION (TRMML3.GNZOE):

(ZETTR3.ZETTR) 19339

ZETTR THREE DEPARTURE (RNAV)

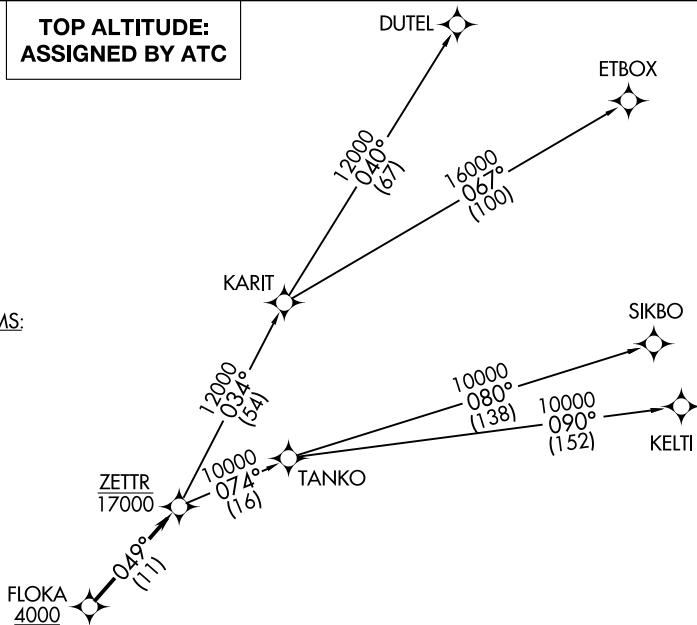
AL-5642 (FAA)

CUSTER (TTF)
MONROE, MICHIGAN

AWOS-3
119.075
CTAF
122.7
DETROIT DEP CON
134.3 284.0

**TOP ALTITUDE:
ASSIGNED BY ATC**

TAKEOFF MINIMUMS:
Standard.



- NOTE: RNAV 1.
- NOTE: RADAR required.
- NOTE: DME/DME/IRU or GPS required.
- NOTE: Turbojet departures at/above 10000, maintain 280K until advised by ATC.
- NOTE: TANKO TRANSITION: For use by CYYZ area arrivals only, or as assigned by ATC.

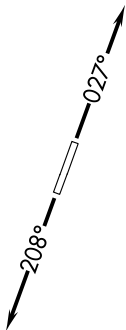
▼ DEPARTURE ROUTE DESCRIPTION

TAKEOFF RUNWAY 3: Climb on heading 027° or as assigned for RADAR vectors to cross FLOKA at or above 4000, thence....

TAKEOFF RUNWAY 21: Climb on heading 208° or as assigned for RADAR vectors to cross FLOKA at or above 4000, thence....

....on track 049° to cross ZETTR at or below 17000, then on (transition). Maintain ATC assigned altitude, expect filed altitude 10 minutes after departure.

- DUTEL TRANSITION (ZETTR3.DUTEL):
- ETBOX TRANSITION (ZETTR3.ETBOX):
- KELTI TRANSITION (ZETTR3.KELTI):
- SIKBO TRANSITION (ZETTR3.SIKBO):
- TANKO TRANSITION (ZETTR3.TANKO):



NOTE: Chart not to scale.

EC-1, 22 FEB 2024 to 21 MAR 2024

EC-1, 22 FEB 2024 to 21 MAR 2024

ZETTR THREE DEPARTURE (RNAV)
(ZETTR3.ZETTR) 05DEC19

MONROE, MICHIGAN
CUSTER (TTF)