

VINTA TWO ARRIVAL
(VINTA, VINTA2) 09JAN92

(VINTA, VINTA2) 20086
VINTA TWO ARRIVAL

AL-432 (FAA)

TULSA, OKLAHOMA

TULSA APP CON
119.1 351.8

BARTLESVILLE
117.9 BVO Chan 126

SPRINGFIELD
116.9 SGF Chan 116
N37°21.36' - W93°20.04'
L-16, H-5

NEOSHO
117.3 EOS Chan 120
N36°50.55' - W94°26.14'
L-16, H-6

(ORIXY)
N36°49.04'
W95°02.36'

VINTA
N36°39.79'
W95°13.61'

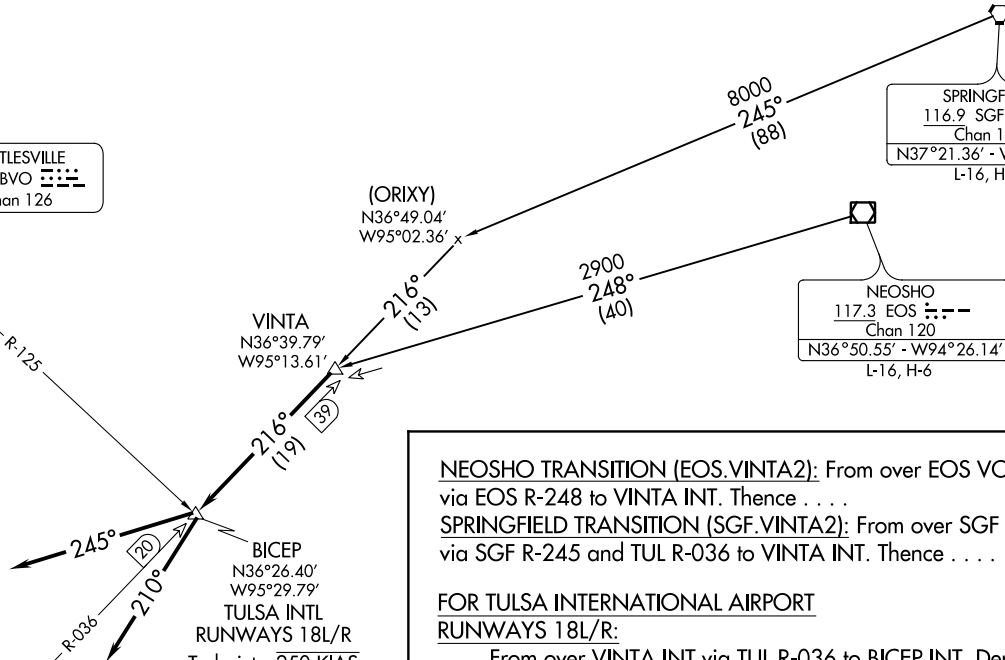
BICEP
N36°26.40'
W95°29.79'
TULSA INTL
RUNWAYS 18L/R
Turbojets 250 KIAS

TULSA
114.4 TUL Chan 91

TULSA INTL

RICHARD LLOYD JONES JR

NOTE: Chart not to scale.



NEOSHO TRANSITION (EOS.VINTA2): From over EOS VOR/DME via EOS R-248 to VINTA INT. Thence

SPRINGFIELD TRANSITION (SGF.VINTA2): From over SGF VORTAC via SGF R-245 and TUL R-036 to VINTA INT. Thence

FOR TULSA INTERNATIONAL AIRPORT RUNWAYS 18L/R:
. . . . From over VINTA INT via TUL R-036 to BICEP INT. Depart BICEP INT heading 245° for vector to final approach course. Turbojets cross BICEP INT at 250K IAS.

RUNWAYS 36L/R:
. . . . From over VINTA INT via TUL R-036 to BICEP INT. Depart BICEP INT heading 210° for vector to final approach course.

FOR RICHARD LLOYD JONES JR AIRPORT:
. . . . From over VINTA INT via TUL R-036 to BICEP INT. Depart BICEP INT heading 210° for vector to final approach course.