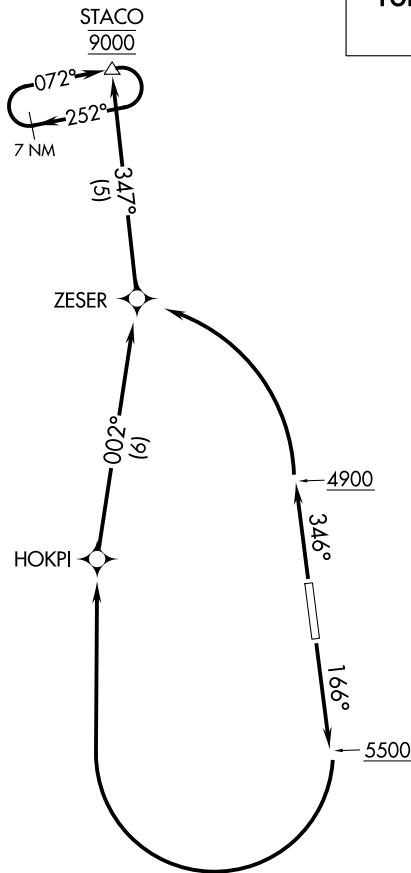


SLC ASOS
125.625
AWOS-3
119.725
SALT LAKE CITY DEP CON
135.5 316.15
CTAF
123.0

**TOP ALTITUDE:
9000**



NOTE: RNAV 1.
NOTE: GPS required.

TAKEOFF MINIMUMS

Rwy 17: Standard with minimum climb of 350' per NM to 8200.
Rwy 35: Standard with minimum climb of 380' per NM to 9000.

NOTE: Chart not to scale.

DEPARTURE ROUTE DESCRIPTION

TAKEOFF RUNWAY 17: Climb heading 166° to 5500, then climbing right turn direct HOKPI, then on depicted route to STACO, thence. . . .

TAKEOFF RUNWAY 35: Climb heading 346° to 4900, then climbing left turn direct ZESER, then on depicted route to STACO, thence. . . .

. . . . Maintain 9000 and hold at STACO.