

CLOUD ONE ARRIVAL

AL-545 (FAA)

PALM SPRINGS, CALIFORNIA

SOCAL APP CON *

126.7 370.95
135.275 251.1
PSP ATIS
124.65
TRM ASOS
118.325

PALM SPRINGS TOWER *

119.7 377.05
BERMUDA DUNES UNICOM
122.8
JACQUELINE COCHRAN UNICOM
123.0

GOFFS
114.4 GFS
Chan 91
N35°07.87'-W115°10.59'
L-7, H-4

NEEDLES
115.2 EED
Chan 99
N34°45.96'-W114°28.45'
L-7, H-4

TWENTYNINE PALMS
114.2 TNP
Chan 89
N34°06.73'-W115°46.19'

PALM SPRINGS
115.5 PSP
Chan 102

CLOUD
N33°54.17'
W115°56.36'

THERMAL
116.2 TRM
Chan 109
N33°37.69'-W116°09.61'

BLYTHE
117.4 BLH
Chan 121
N33°35.76'-W114°45.67'
L-4-5, H-4

PALM SPRINGS INTL
BERMUDA DUNES
JACQUELINE COCHRAN RGNL

NOTE: Chart not to scale.

NOTE: DME required.

ARRIVAL ROUTE DESCRIPTION

BLYTHE TRANSITION (BLH.CLOUD1): From over BLH VORTAC on BLH R-278 and PSP R-072 to CLOUD DME. Thence. . .

DECAS TRANSITION (DECAS.CLOUD1): From over DECAS INT on BLH R-278 and PSP R-072 to CLOUD DME. Thence. . .

GOFFS TRANSITION (GFS.CLOUD1): From over GFS VORTAC on GFS R-185 and TNP R-028 to TNP VORTAC, then on TNP R-199 to CLOUD DME. Thence. . .

NEEDLES TRANSITION (EED.CLOUD1): From over EED VORTAC on EED R-216 and TRM R-037 to UBABE DME, then on PSP R-072 to CLOUD DME. Thence. . .

. . . From over CLOUD DME on TRM R-021 to TRM VORTAC. Expect RADAR vectors to final approach course.

CLOUD ONE ARRIVAL

(CLOUD.CLOUD1) 12MAY05

PALM SPRINGS, CALIFORNIA

SW-3, 19 MAY 2022 to 16 JUN 2022

SW-3, 19 MAY 2022 to 16 JUN 2022

SBONO ONE ARRIVAL

SOCAL APP CON *
 126.7 370.95
 135.275 251.1
 PSP ATIS
 124.65
 TRM ASOS
 118.325
 BERMUDA DUNES UNICOM
 122.8
 JACQUELINE COCHRAN UNICOM
 123.0
 PALM SPRINGS TOWER *
 119.7 377.05

GOFFS
 114.4 GFS :...:
 Chan 91
 N35°07.87'-W115°10.59'
 L-7, H-4

NEEDLES
 115.2 EED :...:
 Chan 99
 N34°45.96'-W114°28.45'
 L-7, H-4

TWENTYNINE PALMS
 114.2 TNP :...:
 Chan 89
 N34°06.73'-W115°46.19'

PALM SPRINGS
 115.5 PSP :...:
 Chan 102

CLOUD
 N33°54.17'
 W115°56.36'

SBONO
 N33°53.61'
 W116°04.82'

UBABE
 N33°54.93'
 W115°44.51'

DECAS
 N33°49.42'
 W115°27.40'
 H-4

THERMAL
 116.2 TRM :...:
 Chan 109

BLYTHE
 117.4 BLH :...:
 Chan 121
 N33°35.76'-W114°45.67'
 L-4-5, H-4

NOTE: Chart not to scale.

NOTE: DME required.

ARRIVAL ROUTE DESCRIPTION

BLYTHE TRANSITION (BLH.SBONO1): From over BLH VORTAC on BLH R-278 and PSP R-072 to SBONO DME. Thence. . .

DECAS TRANSITION (DECAS.SBONO1): From over DECAS INT on BLH R-278 and PSP R-072 to SBONO DME. Thence. . .

GOFFS TRANSITION (GFS.SBONO1): From over GFS VORTAC on GFS R-185 and TNP R-028 to TNP VORTAC, then on TNP R-199 and PSP R-072 to SBONO DME. Thence. . .

NEEDLES TRANSITION (EED.SBONO1): From over EED VORTAC on EED R-216 and TRM R-037 to UBABE DME, then on PSP R-072 to SBONO DME. Thence. . .

. . . .From over SBONO DME expect RADAR vectors to final approach course.

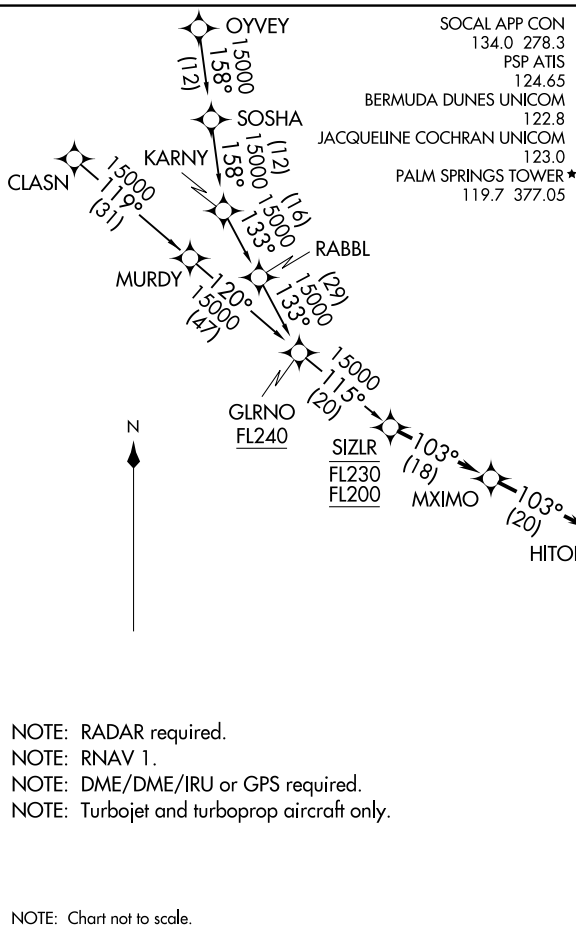
SBONO ONE ARRIVAL

SW-3, 19 MAY 2022 to 16 JUN 2022

SW-3, 19 MAY 2022 to 16 JUN 2022

SIZLR THREE ARRIVAL (RNAV)
(SIZLR.SIZLR3) 01FEB18

PALM SPRINGS, CALIFORNIA



ARRIVAL ROUTE DESCRIPTION

CLASN TRANSITION (CLASN.SIZLR3)
OYVEY TRANSITION (OYVEY.SIZLR3)

LANDING ALL AIRPORTS: From SIZLR on track 103° to MXIMO, then on track 103° to HITOP, then on track 106° to cross PZUKY at 16000, then on track 106° to cross BITTY at 16000, then on track 106° to cross MORON at 14000, then on track 095° to cross FERNN at 11000, then on track 123° to cross PSP VORTAC at 9000, then on track 124° to cross DEZZY at 9000, then on track 124°. Expect RADAR vectors to final approach course.

LOST COMMUNICATIONS
 Proceed direct TRM VORTAC and execute the VOR or GPS-B approach.

NOTE: RADAR required.
 NOTE: RNAV 1.
 NOTE: DME/DME/IRU or GPS required.
 NOTE: Turbojet and turboprop aircraft only.

NOTE: Chart not to scale.

(SIZLR.SIZLR3) 21188
SIZLR THREE ARRIVAL (RNAV)

AL-545 (FAA)

PALM SPRINGS, CALIFORNIA