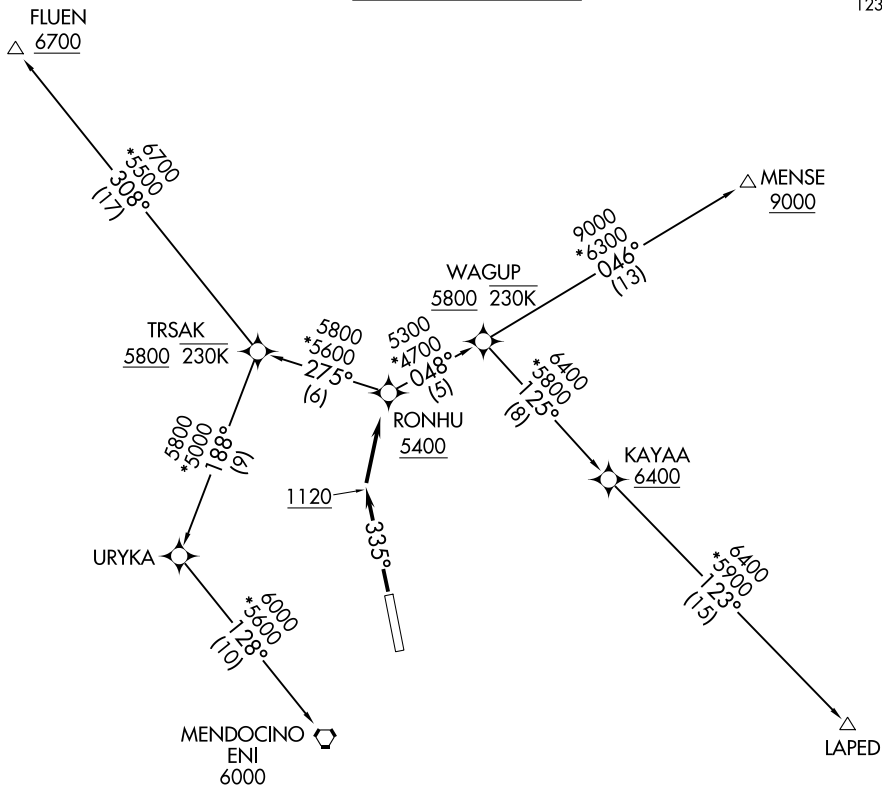


RNAV 1 - GPS.

**TOP ALTITUDE:
ASSIGNED BY ATC**



SW-2, 22 FEB 2024 to 21 MAR 2024

SW-2, 22 FEB 2024 to 21 MAR 2024

TAKEOFF MINIMUMS

Rwy 33: Standard with minimum climb of 297' per NM to 4000.

NOTE: Do not exceed 230K until passing WAGUP.

NOTE: Do not exceed 230K until passing TRSAK.

NOTE: Chart not to scale.



DEPARTURE ROUTE DESCRIPTION

TAKEOFF RUNWAY 33: Climb on heading 335° to 1120, then direct RONHU at or above 5400, thence

. . . . on assigned transition, maintain ATC assigned altitude, expect filed altitude 10 minutes after departure.

FLUEN TRANSITION (RONHU2.FLUEN)

LAPED TRANSITION (RONHU2.LAPED)

MENDOCINO TRANSITION (RONHU2.ENI)

MENSE TRANSITION (RONHU2.MENSE)

(RYPAX2.RYPAX) 22307

RYPAX TWO DEPARTURE (RNAV)

AL-698 (FAA)

UKIAH MUNI (UKI)
UKIAH, CALIFORNIA

**TOP ALTITUDE:
ASSIGNED BY ATC**

RNAV 1 - GPS.

OAKLAND CENTER
127.8 353.5
CTAF
123.0

MERRI Δ
6200

SABBY Δ
5900

LUCRN
5900

MENDOCINO
ENI

Δ LAPED

RYPAX
5600 230K

Δ GETER

TAKEOFF MINIMUMS

Rwy 33: NA - ATC

Rwy 15: Standard with minimum climb of 594' per NM to 4400.

NOTE: Chart not to scale.

DEPARTURE ROUTE DESCRIPTION

TAKEOFF RUNWAY 15: Climb on heading 155° to 1120, then left turn direct RYPAX at or above 5600 at or below 230K, thence. . . .

. . . . on assigned transition, maintain ATC assigned altitude, expect filed altitude 10 minutes after departure.

GETER TRANSITION (RYPAX2.GETER)

LAPED TRANSITION (RYPAX2.LAPED)

MERRI TRANSITION (RYPAX2.MERRI)

SABBY TRANSITION (RYPAX2.SABBY)

RYPAX TWO DEPARTURE (RNAV)

(RYPAX2.RYPAX) 03NOV22

UKIAH, CALIFORNIA
UKIAH MUNI (UKI)

SW-2, 22 FEB 2024 to 21 MAR 2024

SW-2, 22 FEB 2024 to 21 MAR 2024