


LOC I-UTA 110.95 Chan 46 (Y)	APP CRS 347°	Rwy Idg 8500 TDZE 194 Apt Elev 194
--	------------------------	---

ILS or LOC RWY 35

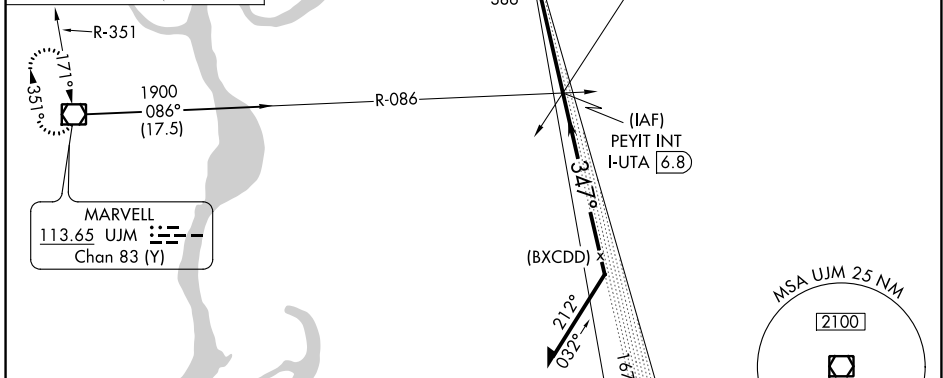
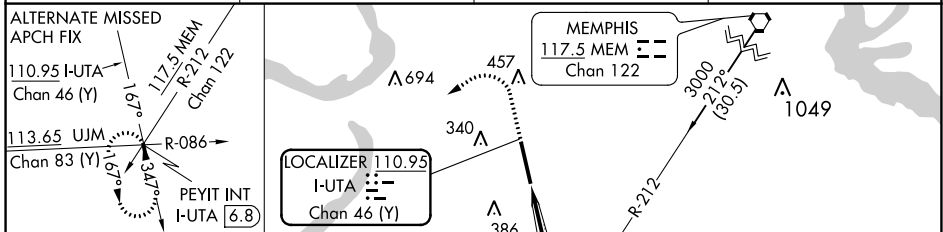
TUNICA MUNI (UTA)

VDP NA with Memphis altimeter setting. When local altimeter not received, use Memphis altimeter setting and increase S-ILS 35 DA to 480 and all MDA 100 feet, increase S-LOC 35 Cats C and D and Circling Cat C visibility 1/4 mile. For inoperative MALSR when using Memphis altimeter setting increase S-ILS 35 all Cats visibility to 1 mile.

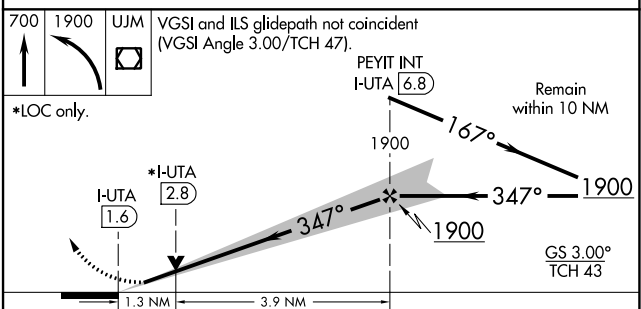
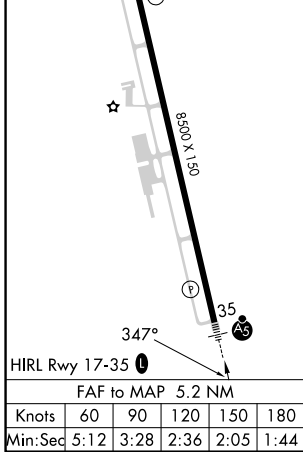
MALSR 

MISSED APPROACH: Climb to 700 then climbing left turn to 1900 direct UJM VOR/DME and hold.

AWOS-3 118.075	MEMPHIS APP CON 119.1 291.6	CLNC DEL 118.9	UNICOM 123.0 (CTAF) 0
--------------------------	---------------------------------------	--------------------------	---------------------------------



ELEV 194	TDZE 194
-----------------	-----------------



CATEGORY	A	B	C	D
S-ILS 35		394-1/2	200 (200-1/2)	
S-LOC 35	640-1/2	446 (500-1/2)	640-7/8	446 (500-7/8)
CIRCLING	680-1 486 (500-1)	740-1 546 (600-1)	760-1/2 566 (600-1/2)	760-2 566 (600-2)

SC-4, 22 FEB 2024 to 21 MAR 2024

SC-4, 22 FEB 2024 to 21 MAR 2024

WAAS CH 56212 W17A	APP CRS 167°	Rwy Idg 8500 TDZE 194 Apt Elev 194
--	------------------------	---

RNAV (GPS) RWY 17

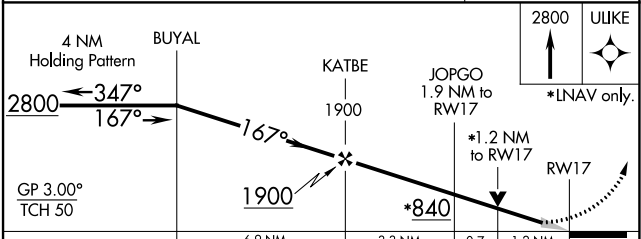
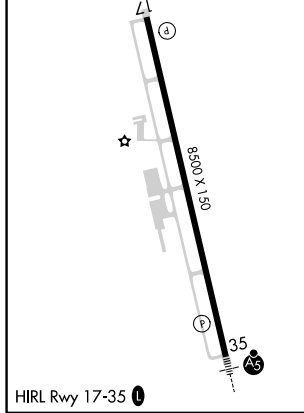
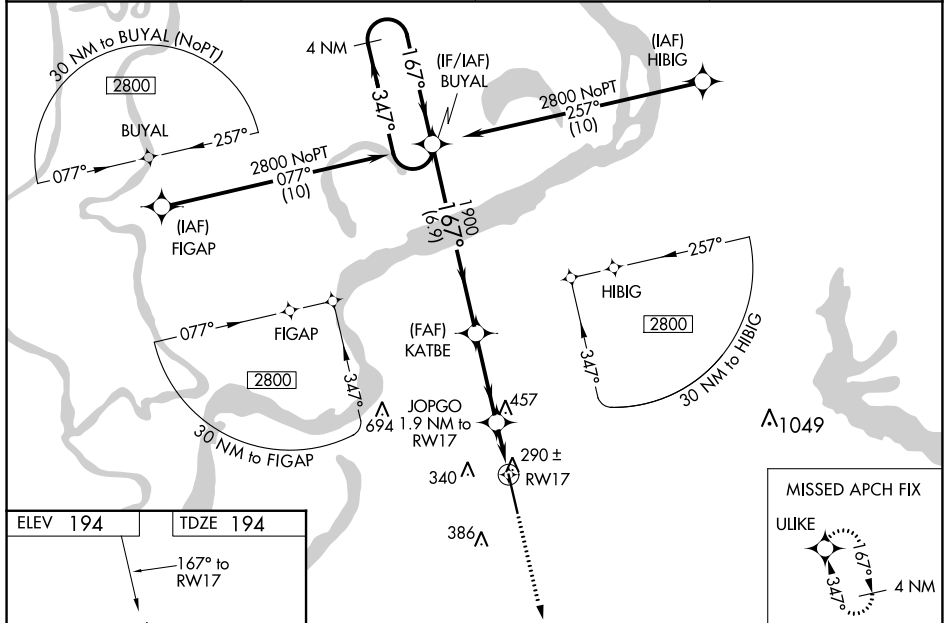
TUNICA MUNI (UTA)

RNP APCH.

⚠ For uncompensated Baro-VNAV systems, LNAV/VNAV NA below -15°C (5°F) or above 42°C (107°F). For inop ALS, increase LNAV/VNAV visibility all Cats to ¾ SM, and LNAV Cats C, D visibility to 1¾ SM. Baro VNAV and VDP NA when using Memphis altimeter setting. When local altimeter setting not received, use Memphis altimeter setting and increase LPV DA to 480, LNAV/VNAV DA to 557, and all MDA 100 feet, increase LNAV/VNAV visibility all Cats to 1 SM, and Circling Cat C visibility to 1¾ SM. For inop ALS when using Memphis altimeter setting, increase LPV all Cats visibility to ¾ SM, LNAV/VNAV all Cats visibility to 1 SM, LNAV Cats C/D visibility to 1¾ SM.

MISSED APPROACH:
Climb to 2800 direct
ULIKE and hold.

AWOS-3 118.075	MEMPHIS APP CON 119.1 291.6	CLNC DEL 118.9	UNICOM 123.0 (CTAF) 0
--------------------------	---------------------------------------	--------------------------	---------------------------------



CATEGORY	A	B	C	D
LPV DA		394-¾	200 (200-¾)	
LNAV/VNAV DA		471-¾	277 (300-¾)	
LNAV MDA	640-¾	446 (500-¾)	640-1½	446 (500-1½)
CIRCLING	680-1 486 (500-1)	740-1 546 (600-1)	760-1½ 566 (600-1½)	760-2 566 (600-2)

SC-4, 22 FEB 2024 to 21 MAR 2024

SC-4, 22 FEB 2024 to 21 MAR 2024

WAAS CH 60912 W35A	APP CRS 347°	Rwy Idg TDZE Apt Elev	8500 194 194
--	------------------------	-----------------------------	---

RNAV (GPS) RWY 35

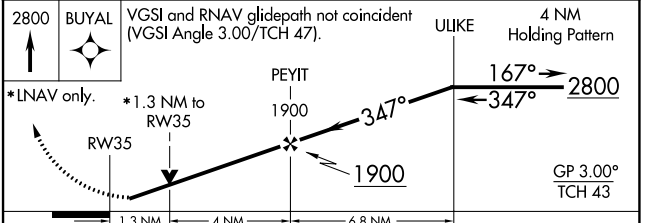
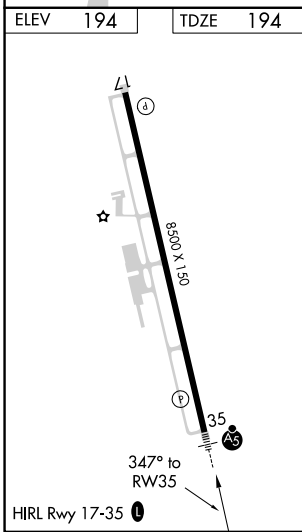
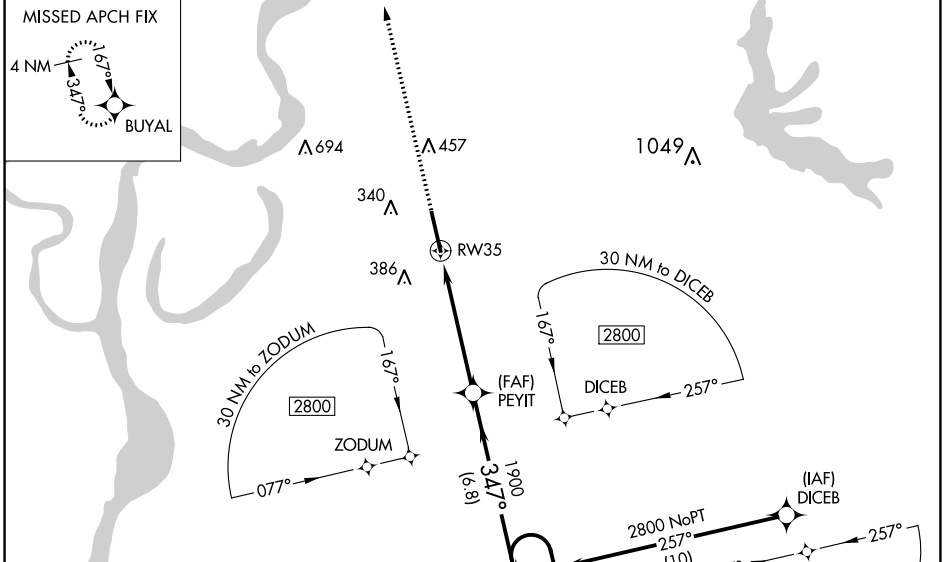
TUNICA MUNI (UTA)

⚠ For uncompensated Baro-VNAV systems, LNAV/VNAV NA below -15°C (5°F) or above 42°C (107°F). For inop MALS, increase LNAV/VNAV all Cats visibility to ¾ mile. DME/DME RNP-0.3 NA. Baro-VNAV and VDP NA when using Memphis altimeter setting. When local altimeter setting not received, use Memphis altimeter setting and increase LPV DA to 480, LNAV/VNAV DA to 530, and all MDA 100 feet; increase LNAV/VNAV visibility all Cats ½ mile, increase LNAV Cat C, D and Circling Cat C visibility ¼ mile. For inop MALS when using Memphis altimeter setting, increase LPV all Cats visibility to ¾ mile.



MISSED APPROACH:
Climb to 2800 direct BUYAL and hold.

AWOS-3 118.075	MEMPHIS APP CON 119.1 291.6	CLNC DEL 118.9	UNICOM 123.0 (CTAF) 0
--------------------------	---------------------------------------	--------------------------	---------------------------------



CATEGORY	A	B	C	D
LPV DA	394-½ 200 (200-½)			
LNAV/VNAV DA	444-½ 250 (300-½)			
LNAV MDA	640-½ 446 (500-½)		640-⅞ 446 (500-⅞)	
CIRCLING	680-1 486 (500-1)	740-1 546 (600-1)	760-½ 566 (600-½)	760-2 566 (600-2)

SC-4, 22 FEB 2024 to 21 MAR 2024

SC-4, 22 FEB 2024 to 21 MAR 2024