

NDB UWL 385	APP CRS 087°	Rwy Idg 4201
		TDZE 1089
		Apt Elev 1090

NDB RWY 10

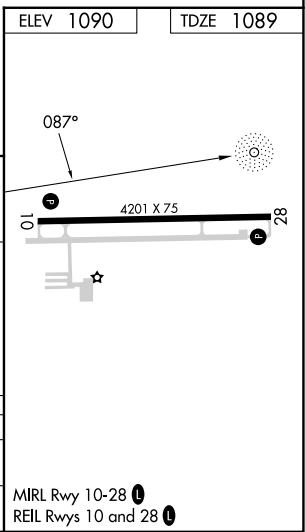
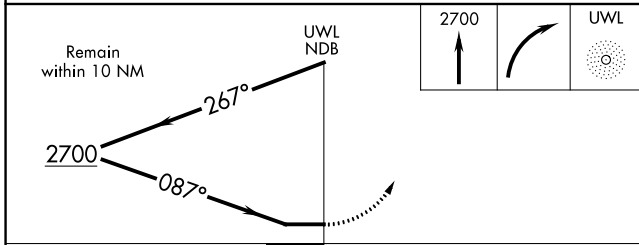
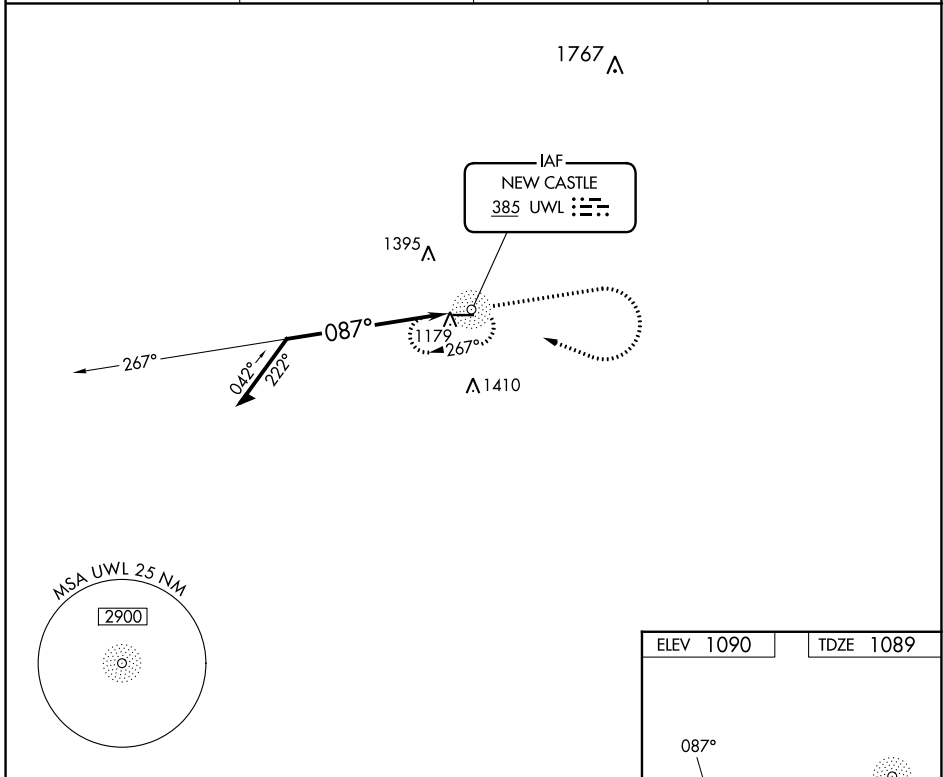
NEW CASTLE HENRY COUNTY MARLATT FLD (UWL)

RADAR required for procedure entry.

▽ Rwy 10 helicopter visibility reduction below $\frac{3}{4}$ SM NA. Use Anderson altimeter setting; when not received, use Muncie altimeter setting and increase all MDA 20 feet; increase S-10 Cat C/D visibility $\frac{1}{8}$ SM.
▲ NA

MISSED APPROACH: Climb to 2700 then right turn direct UWL NDB and hold.

AWOS-3 132.375	AID AWOS-3 128.55	INDIANAPOLIS APP CON 135.45 317.8	UNICOM 123.05 (CTAF) 0
--------------------------	-----------------------------	---	----------------------------------



CATEGORY	A	B	C	D
S-10	1760-1	671 (700-1)	1760-1 $\frac{7}{8}$	671 (700-1 $\frac{7}{8}$)
C CIRCLING	1760-1	670 (700-1)	1780-2 690 (700-2)	1780-2 $\frac{1}{4}$ 690 (700-2 $\frac{1}{4}$)

NDB RWY 10

EC-2, 22 FEB 2024 to 21 MAR 2024

EC-2, 22 FEB 2024 to 21 MAR 2024

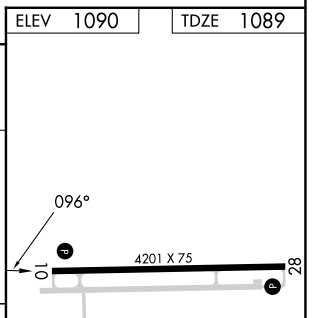
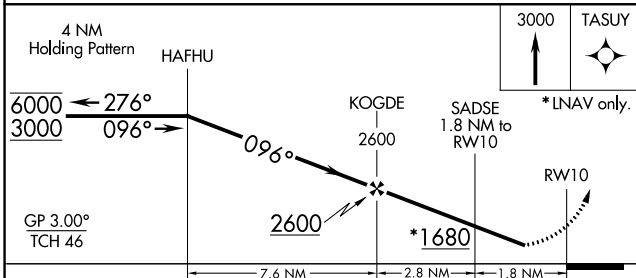
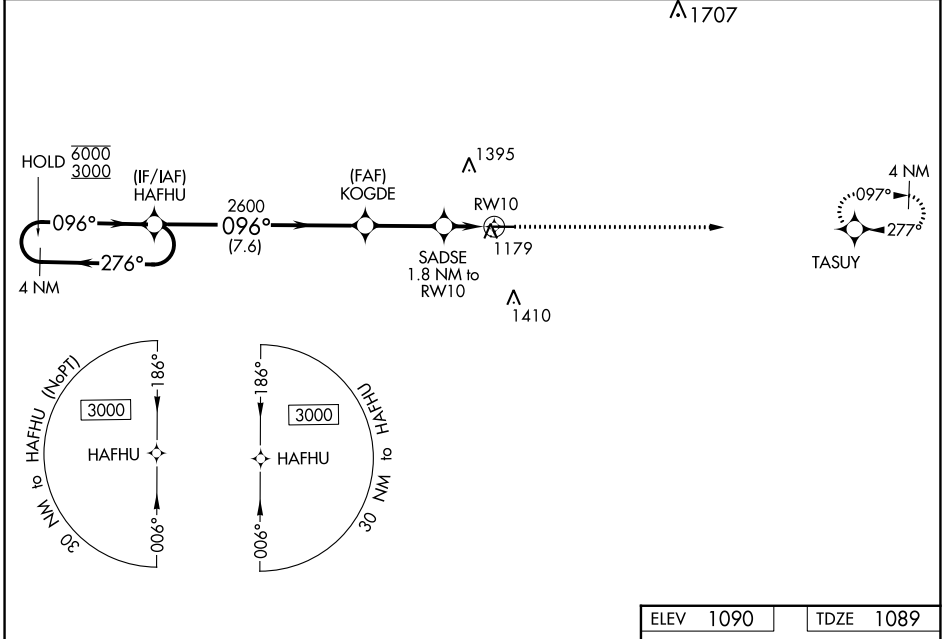
WAAS CH 82041 W10A	APP CRS 096°	Rwy Idg TDZE Apt Elev	4201 1089 1090
--	------------------------	-----------------------------	---

RNAV (GPS) RWY 10

NEW CASTLE HENRY COUNTY MARLATT FLD (UWL)

RNP APCH.	Rwy 10 helicopter visibility reduction below 3/4 SM NA. Baro-VNAV NA. Use Anderson altimeter setting; when not received, use Muncie altimeter setting and increase LPV DA to 1412, LNAV/VNAV DA to 1437, and all MDA 20 feet; increase LNAV Cat C/D visibility 1/8 SM.	MISSED APPROACH: Climb to 3000 direct TASUY and hold.
-----------	--	--

AWOS-3 132.375	AID AWOS-3 128.55	INDIANAPOLIS APP CON 135.45 317.8	UNICOM 123.05 (CTAF) 0
--------------------------	-----------------------------	---	----------------------------------



CATEGORY	A	B	C	D
LPV DA		1408-1	319 (400-1)	
LNAV/VNAV DA		1433-1	344 (400-1)	
LNAV MDA	1520-1	431 (500-1)	1520-1/4	431 (500-1/4)
CIRCLING	1580-1 490 (500-1)	1600-1 510 (600-1)	1780-2 690 (700-2)	1780-2/4 690 (700-2/4)

ELEV 1090	TDZE 1089
MIRL Rwy 10-28 0 REIL Rwy 10 and 28 0	

EC-2, 22 FEB 2024 to 21 MAR 2024

EC-2, 22 FEB 2024 to 21 MAR 2024

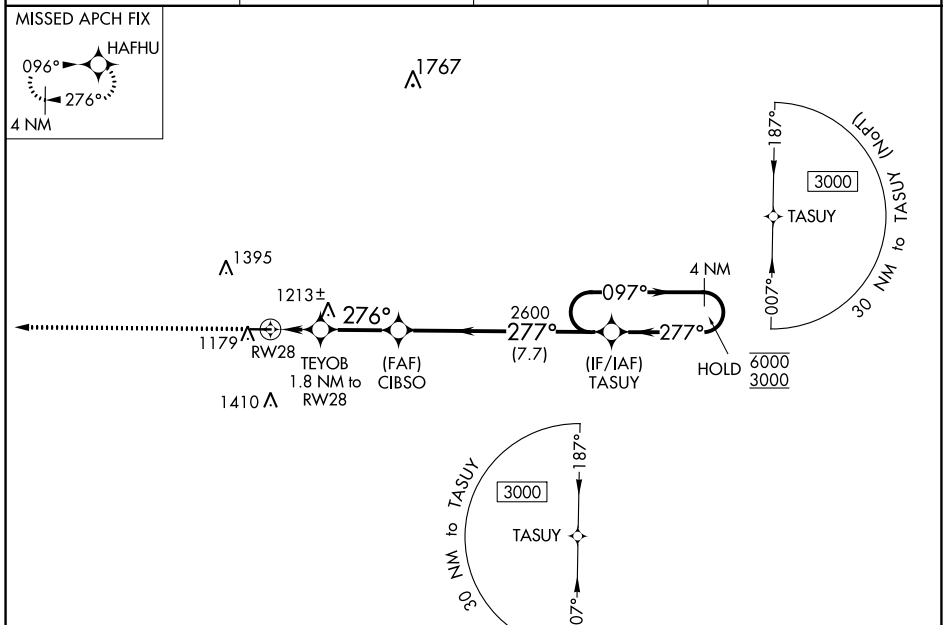
WAAS CH 70541 W28A	APP CRS 276°	Rwy Idg TDZE Apt Elev	4201 1090 1090
--	------------------------	-----------------------------	---

RNAV (GPS) RWY 28

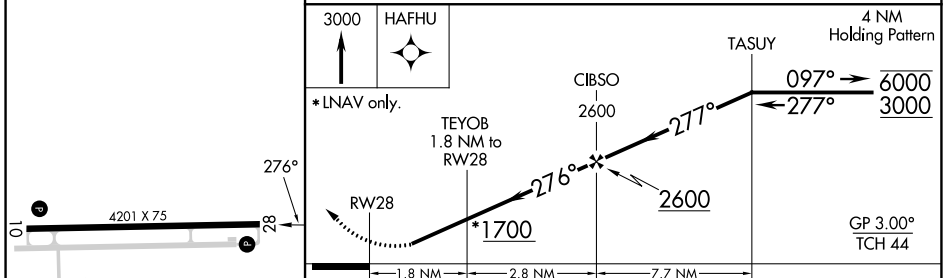
NEW CASTLE HENRY COUNTY MARLATT FLD (UWL)

RNP APCH.	Rwy 28 helicopter visibility reduction below 3/4 SM NA. Baro-VNAV NA. Use Anderson altimeter setting; when not received, use Muncie altimeter setting and increase LPV DA to 1.416, LNAV/VNAV DA to 1.441, and all MDA 20 feet.	MISSED APPROACH: Climb to 3000 direct HAFHU and hold.
-----------	--	--

AWOS-3 132.375	AID AWOS-3 128.55	INDIANAPOLIS APP CON 135.45 317.8	UNICOM 123.05 (CTAF)
--------------------------	-----------------------------	---	--------------------------------



ELEV 1090	TDZE 1090
-----------	-----------



CATEGORY	A	B	C	D
LPV DA		1412-1	322 (400-1)	
LNAV/VNAV DA		1437-1	347 (400-1)	
LNAV MDA	1540-1	450 (500-1)	1540-1 3/8	450 (500-1 3/8)
CIRCLING	1580-1 490 (500-1)	1600-1 510 (600-1)	1780-2 690 (700-2)	1780-2 1/4 690 (700-2 1/4)

EC-2, 22 FEB 2024 to 21 MAR 2024

EC-2, 22 FEB 2024 to 21 MAR 2024