

APP CRS	Rwy Idg	3881
262°	TDZE	53
	Apt Elev	53

RNAV (GPS) RWY 26

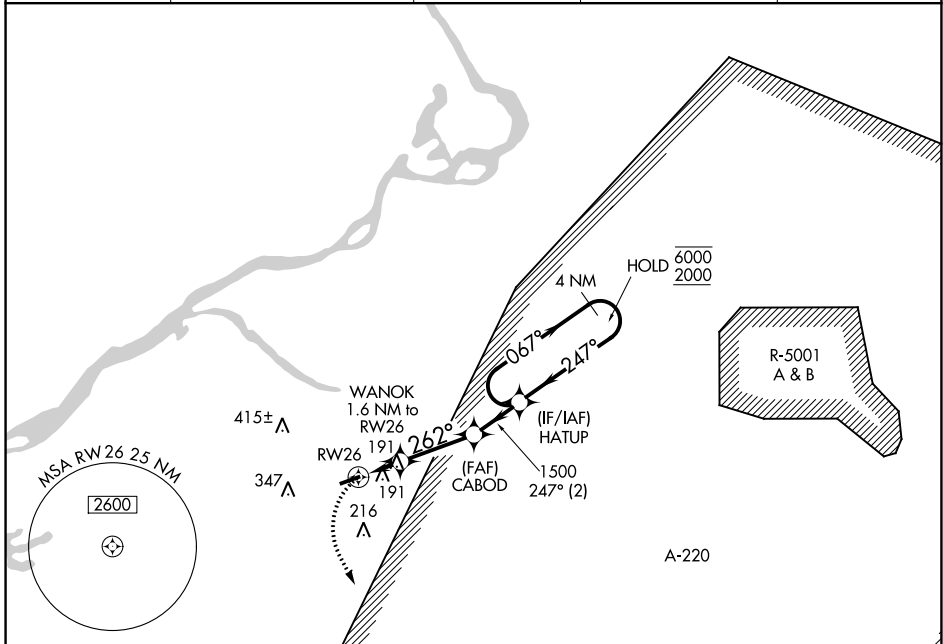
SOUTH JERSEY RGNL (V.A.Y)

RNP APCH.

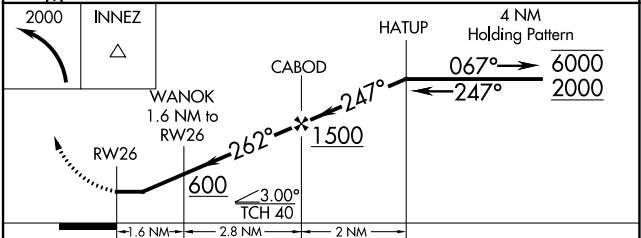
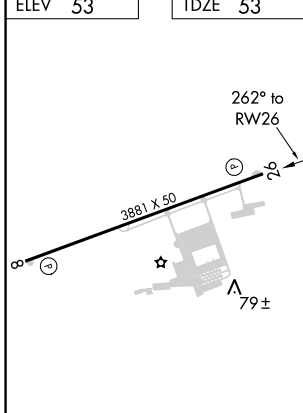
▽ Rwy 26 helicopter visibility reduction below 1 SM NA. Procedure NA at night.

MISSED APPROACH:
Climbing left turn to 2000
direct INNEZ and hold.

ASOS 119.325	MC GUIRE APP CON 126.475 363.8	GCO 121.725	UNICOM 122.8 (CTAF)	123.3 0
------------------------	--	-----------------------	-------------------------------	----------------



ELEV 53	TDZE 53
---------	---------



CATEGORY	A	B	C	D
LNNAV MDA	480-1	427 (500-1)	NA	
CIRCLING	520-1	540-1	NA	
	467 (500-1)	487 (500-1)		

NE-2, 27 JAN 2022 to 24 FEB 2022

NE-2, 27 JAN 2022 to 24 FEB 2022

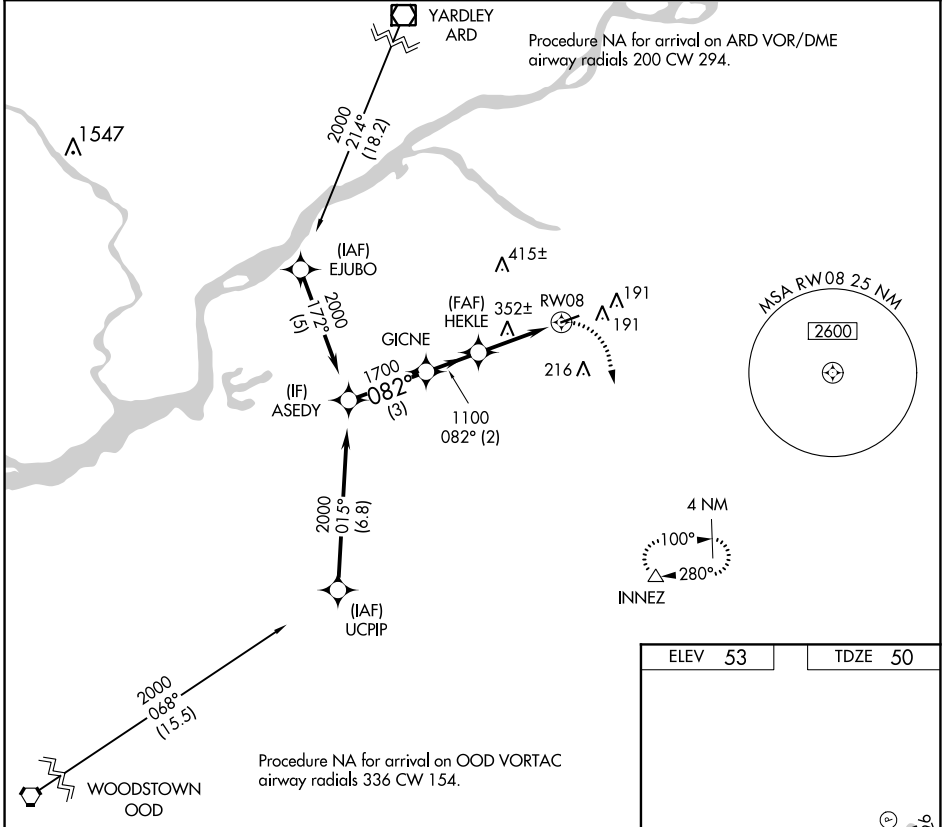
WAAS CH 69324 W08A	APP CRS 082°	Rwy ldg TDZE Apt Elev	3881 50 53
--	------------------------	-----------------------------	---------------------------------------

RNAV (GPS) RWY 8

SOUTH JERSEY RGNL (VAY)

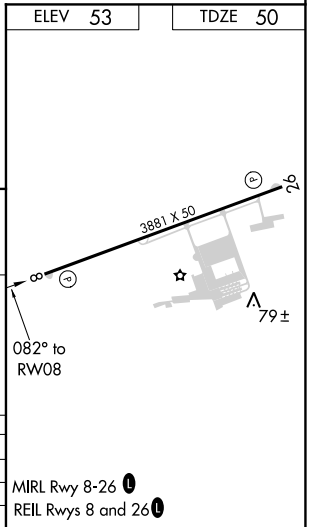
RNP APCH.		MISSED APPROACH: Climbing right turn to 2000 direct INNEZ and hold.		
<p>Procedure NA at night. Rwy 8 helicopter visibility reduction below 1 SM NA.</p>				

ASOS 119.325	MC GUIRE APP CON 126.475 363.8	GCO 121.725	UNICOM 122.8 (CTAF)	123.3 0
------------------------	--	-----------------------	-------------------------------	----------------



Visual Segment - Obstacles.

ASEDY	GICNE	HEKLE	RW08	INNEZ
2000	1700	1100		2000
3 NM			2 NM	3.2 NM
CATEGORY	A	B	C	D
LP MDA	660-1	610 (700-1)		NA
LNAV MDA	660-1	610 (700-1)		NA
CIRCLING	660-1	607 (700-1)		NA



NE-2, 27 JAN 2022 to 24 FEB 2022

NE-2, 27 JAN 2022 to 24 FEB 2022

VORTAC RBV 113.8 Chan 85	APP CRS 236°	Rwy Idg 3881 TDZE 53 Apt Elev 53
--	------------------------	---

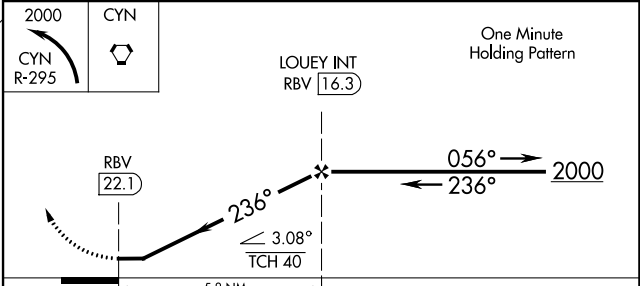
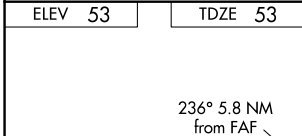
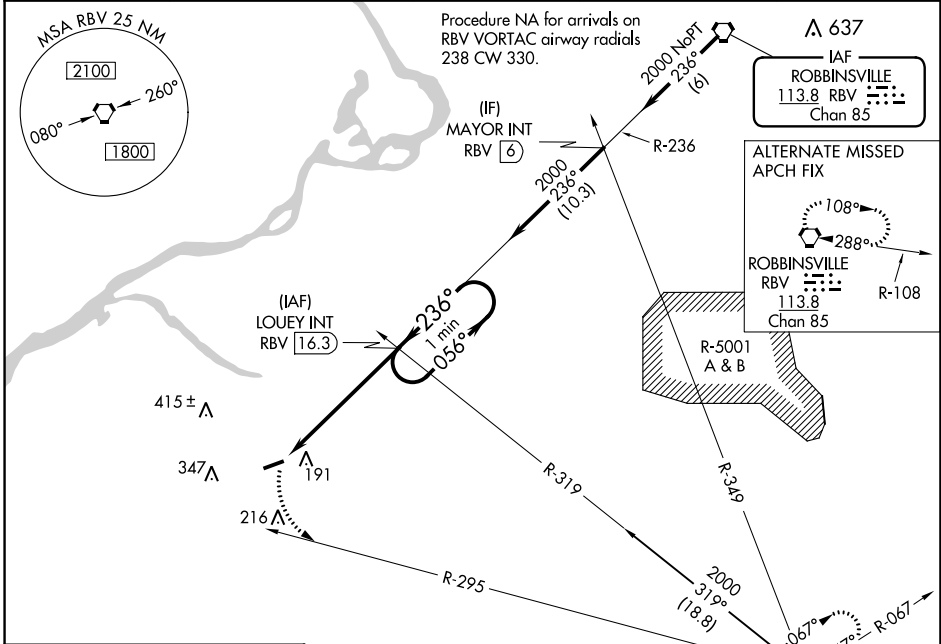
VOR RWY 26

SOUTH JERSEY RGNL (VAY)

⚠ When local altimeter setting not received, use Northeast Philadelphia altimeter setting and increase all MDA 40 feet. Procedure NA at night. Helicopter visibility reduction below 1 SM NA.

MISSED APPROACH: Climbing left turn to 2000 on CYN VORTAC R-295 to CYN VORTAC and hold.

ASOS 119.325	MC GUIRE APP CON 126.475 363.8	GCO 121.725	UNICOM 122.8 (CTAF)	123.3 0
------------------------	--	-----------------------	-------------------------------	-----------------------



MIRL Rwy 8-26 **0**

REIL Rwys 8 and 26 **0**

FAF to MAP 5.8 NM					
Knots	60	90	120	150	180
Min:Sec	5:48	3:52	2:54	2:19	1:56

CATEGORY	A	B	C	D
S-26	640-1	587 (600-1)	NA	NA
CIRCLING	640-1	640-1 1/4	NA	NA
	587 (600-1)	587 (600-1 1/4)		

NE-2, 27 JAN 2022 to 24 FEB 2022

NE-2, 27 JAN 2022 to 24 FEB 2022