

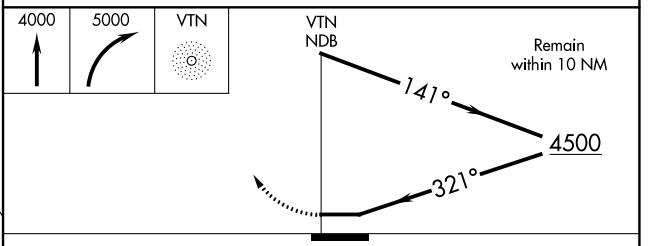
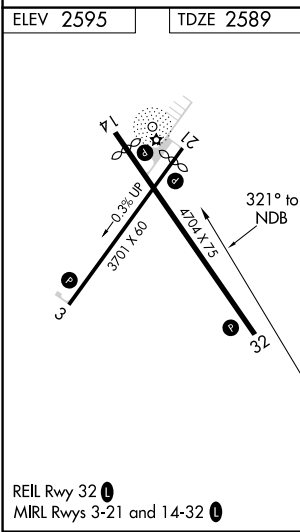
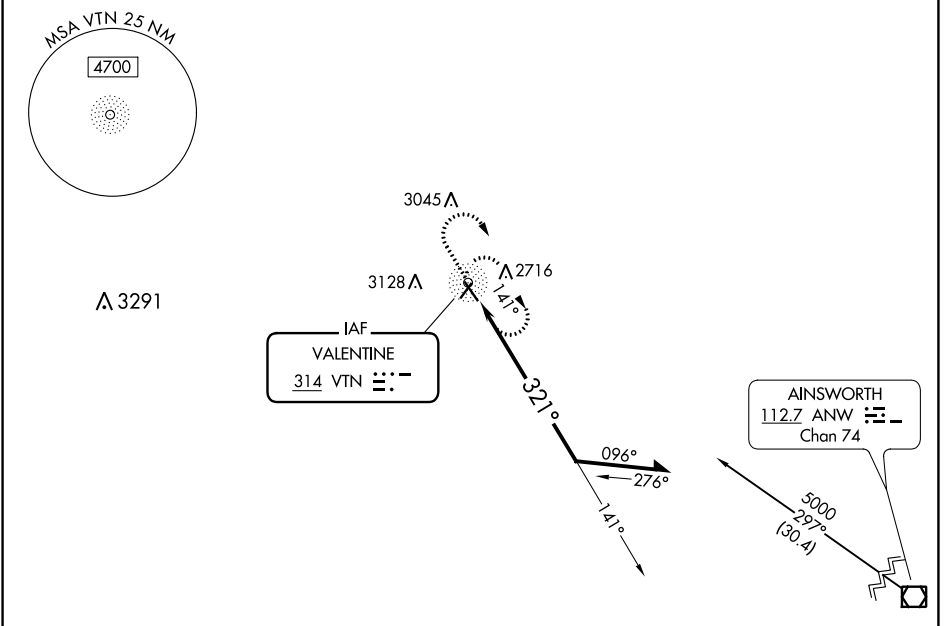
NDB VTN 314	APP CRS 321°	Rwy Idg TDZE Apt Elev	4704 2589 2595
-----------------------	------------------------	-----------------------------	---

NDB RWY 32

MILLER FLD (VTN)

⚠ MISSED APPROACH: Climb to 4000 then climbing right turn to 5000 direct VTN NDB and hold.

ASOS 118.075	DENVER CENTER 127.95 338.2	UNICOM 122.8 (CTAF)
------------------------	--------------------------------------	-------------------------------



CATEGORY	A	B	C	D
S-32	3400-1 811 (900-1)	3400-1¼ 811 (900-1¼)		NA
C CIRCLING	3400-1 805 (900-1)	3560-1½ 965 (1000-1½)		NA

NC-2, 22 FEB 2024 to 21 MAR 2024

NC-2, 22 FEB 2024 to 21 MAR 2024

WAAS CH 61037 W14A	APP CRS 137°	Rwy Idg 4320 TDZE 2589 Apt Elev 2595
--	------------------------	---

RNAV (GPS) RWY 14

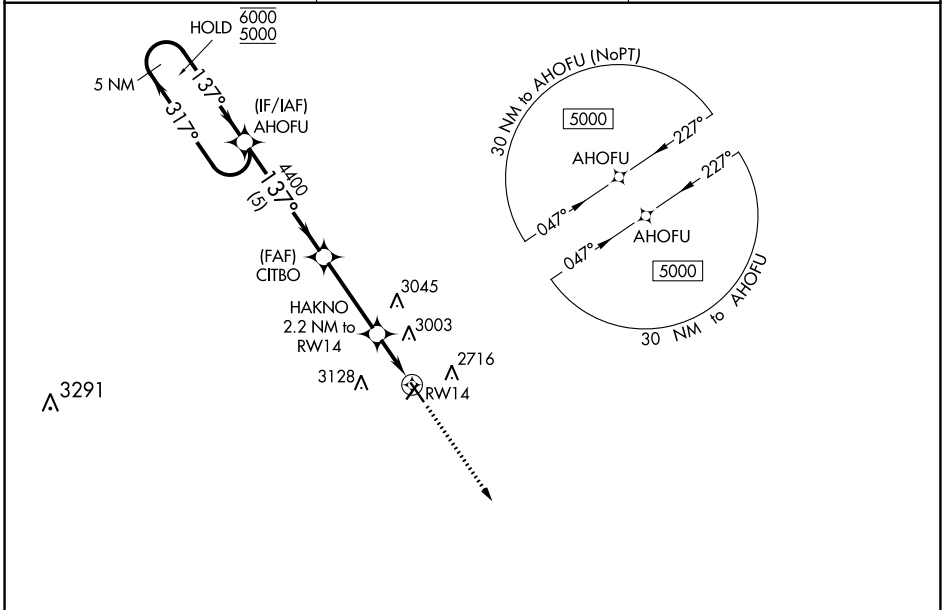
MILLER FLD (VTN)

RNP APCH.

⚠ For uncompensated Baro-VNAV systems, LNAV/VNAV NA below -25°C or above 54°C .
Rwy 14 helicopter visibility reduction below 3/4 SM NA.

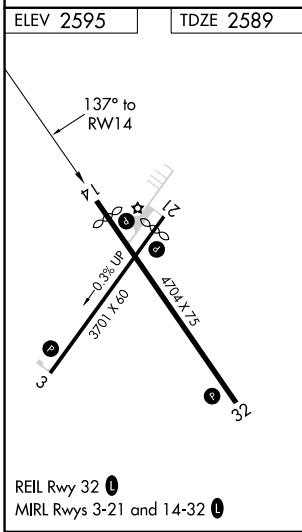
MISSED APPROACH:
Climb to 5000 direct
GIYIT and hold.

ASOS 118.075	DENVER CENTER 127.95 338.2	UNICOM 122.8 (CTAF) 0
------------------------	--------------------------------------	---------------------------------



NC-2, 22 FEB 2024 to 21 MAR 2024

NC-2, 22 FEB 2024 to 21 MAR 2024



5 NM Holding Pattern		AHOFU	CITBO	HAKNO	5000	GIYIT
6000	5000	4400	4400	2.2 NM to RWY14	↑	⬠
GP 3.00°	TCH 40			*1.7 NM to RWY14		*LNAV only
		5 NM	3.4 NM	0.5	1.7 NM	
CATEGORY	A	B	C	D		
LPV DA	2861-1	272 (300-1)			NA	
LNAV/VNAV DA	3239-2¼	650 (700-2¼)			NA	
LNAV MDA	3160-1	571 (600-1)			NA	
C CIRCLING	3160-1 565 (600-1)	3560-1½ 965 (1000-1½)			NA	

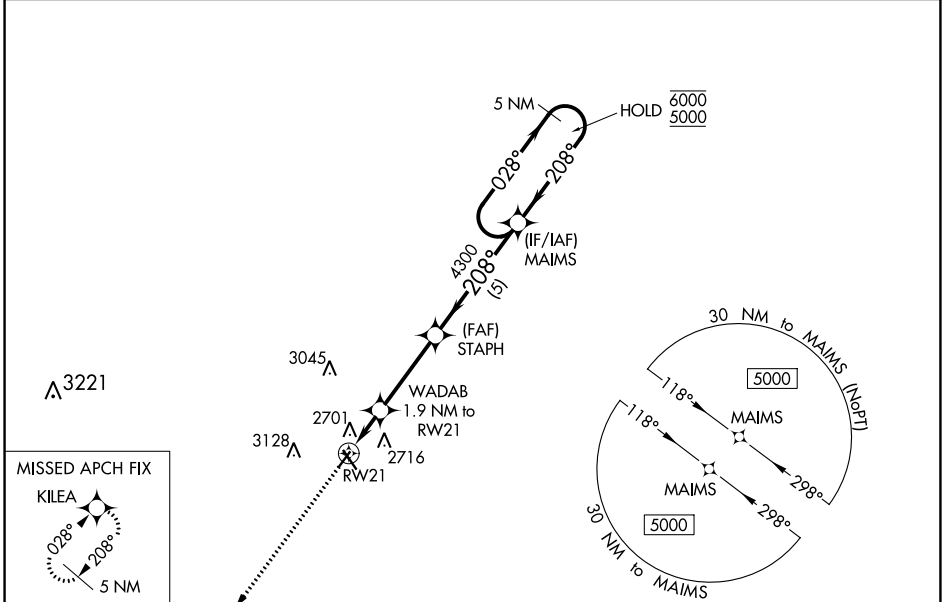
WAAS CH 97437 W21A	APP CRS 208°	Rwy Idg TDZE Apt Elev	3402 2595 2595
--	------------------------	-----------------------------	---

RNAV (GPS) RWY 21

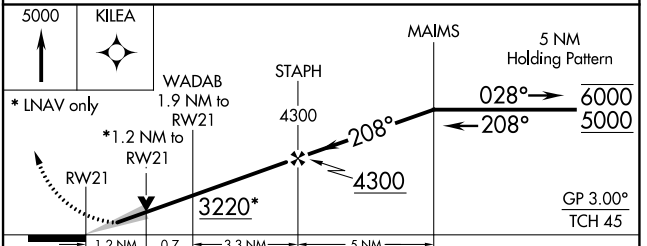
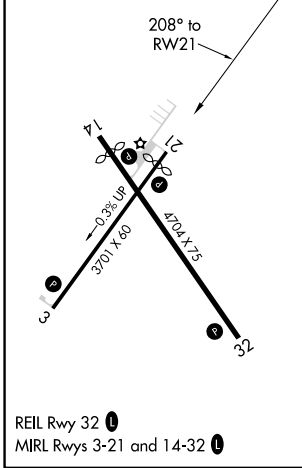
MILLER FLD (VTN)

RNP APCH.		MISSED APPROACH: Climb to 5000 direct KILEA and hold.
<p>⚠ For uncompensated Baro-VNAV systems, LNAV/VNAV NA below -24°C or above 54°C.</p>		

ASOS 118.075	DENVER CENTER 127.95 338.2	UNICOM 122.8 (CTAF) 0
------------------------	--------------------------------------	---------------------------------



ELEV 2595	TDZE 2595
-----------	-----------



CATEGORY	A	B	C	D
LPV DA	2845-1	250 (300-1)		NA
LNAV/VNAV DA	2893-1	298 (300-1)		NA
LNAV MDA	3020-1	425 (500-1)		NA
C CIRCLING	3080-1 485 (500-1)	3560-1½ 965 (1000-1½)		NA

NC-2, 22 FEB 2024 to 21 MAR 2024

NC-2, 22 FEB 2024 to 21 MAR 2024

WAAS CH 90237 W03A	APP CRS 028°	Rwy Idg 3701 TDZE 2595 Apt Elev 2595
--	------------------------	---

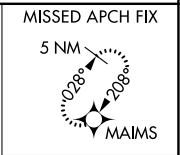
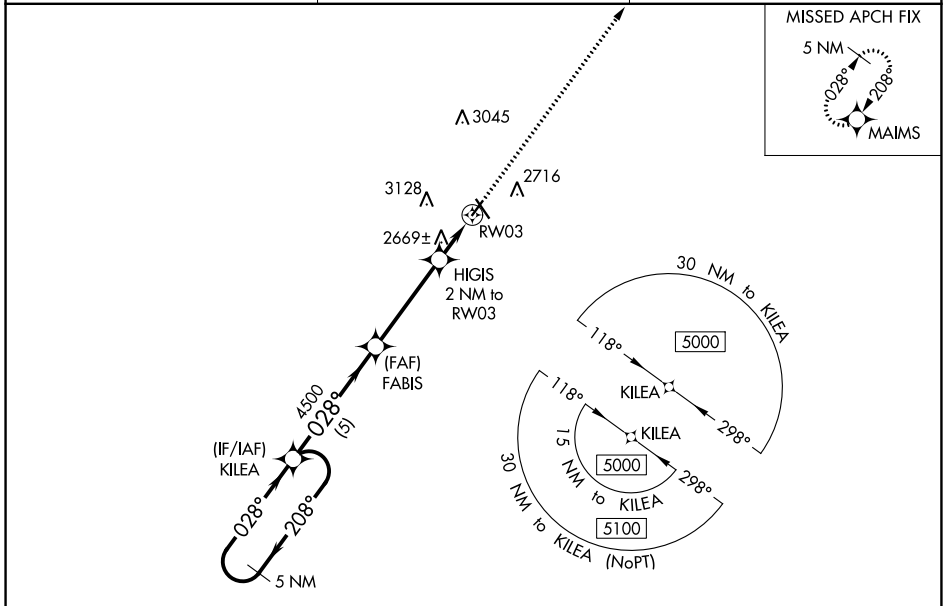
RNAV (GPS) RWY 3

MILLER FLD (VTN)

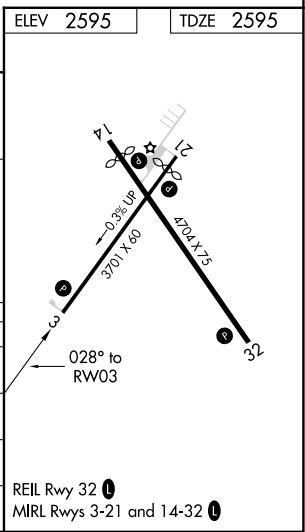
⚠ Baro-VNAV NA when using Ainsworth Rgnl altimeter setting. For uncompensated Baro-VNAV systems, LNAV/VNAV NA below -25°C (-13°F) or above 54°C (130°F). DME/DME RNP-0.3 NA. VDP NA with Ainsworth Rgnl altimeter setting. When local altimeter setting not received, use Ainsworth Rgnl altimeter setting and increase all DA 70 feet and all MDA 80 feet, increase LNAV/VNAV Cat A/B visibility 1/8 mile.

MISSED APPROACH:
Climb to 5000 direct MAIMS and hold.

ASOS 118.075	DENVER CENTER 127.95 338.2	UNICOM 122.8 (CTAF) 0
------------------------	--------------------------------------	---------------------------------



ELEV 2595	TDZE 2595			
5000	MAIMS			
GP 3.00°	TCH 39			
5000	028°			
4500	028°			
3260	*LNAV only.			
0.8 NM to RW03	*0.8 NM to RW03			
1.2 NM	RW03			
3.9 NM				
5 NM				
CATEGORY	A	B	C	D
LPV DA	2845-1	250 (300-1)		NA
LNAV/VNAV DA	2845-1	250 (300-1)		NA
LNAV MDA	2920-1	325 (400-1)		NA
CIRCLING	3080-1 485 (500-1)	3560-1½ 965 (1000-1½)		NA



NC-2, 22 FEB 2024 to 21 MAR 2024

NC-2, 22 FEB 2024 to 21 MAR 2024

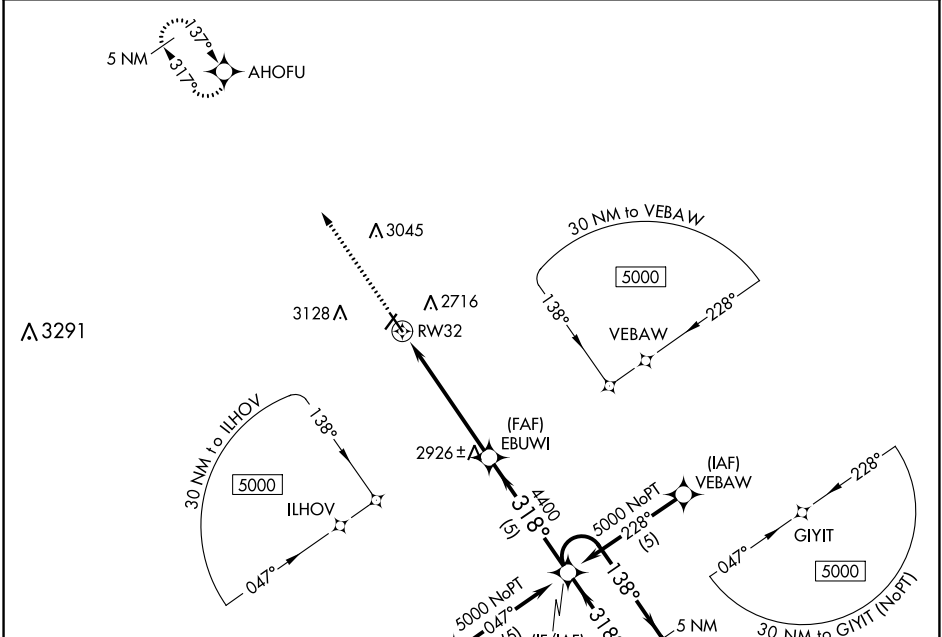
WAAS CH 40010 W32A	APP CRS 318°	Rwy Idg TDZE Apt Elev	4704 2589 2595
---------------------------------	------------------------	-----------------------------	---

RNAV (GPS) RWY 32

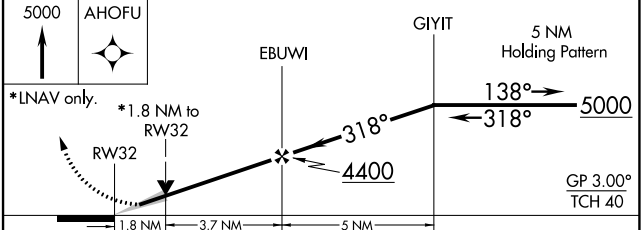
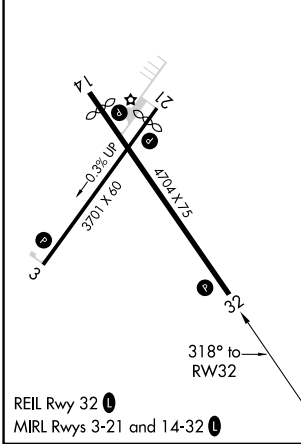
MILLER FLD (VTN)

RNP APCH.	MISSED APPROACH: Climb to 5000 direct AHOFU and hold.
Baro-VNAV NA below -20°C (-4°F).	

ASOS 118.075	DENVER CENTER 127.95 338.2	UNICOM 122.8 (CTAF) 0
------------------------	--------------------------------------	---------------------------------



ELEV 2595	TDZE 2589
-----------	-----------



CATEGORY	A	B	C	D
LPV DA	2841-1	252 (300-1)		NA
LNAV/VNAV DA	2961-1¼	372 (400-1¼)		NA
LNAV MDA	3180-1	591 (600-1)		NA
CIRCLING	3180-1¼ 585 (600-1¼)	3560-1½ 965 (1000-1½)		NA

NC-2, 22 FEB 2024 to 21 MAR 2024

NC-2, 22 FEB 2024 to 21 MAR 2024