

WAAS CH 86937 W18A	APP CRS 183°	Rwy Idg TDZE Apt Elev	5999 654 654
--	------------------------	-----------------------------	---

RNAV (GPS) RWY 18

ILLINOIS VALLEY RGNL-WALTER A DUNCAN FLD (VYS)

RNP APCH - GPS.

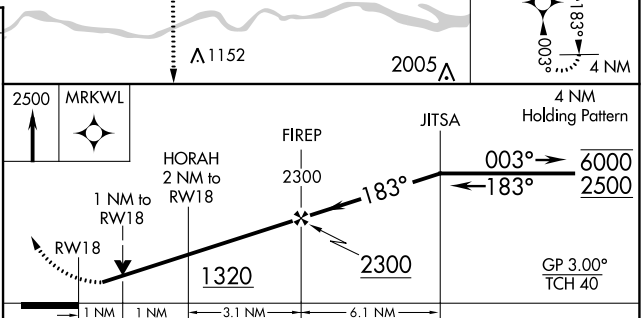
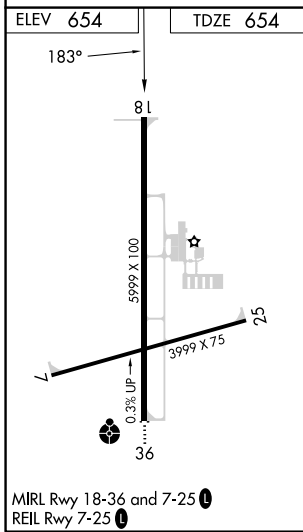
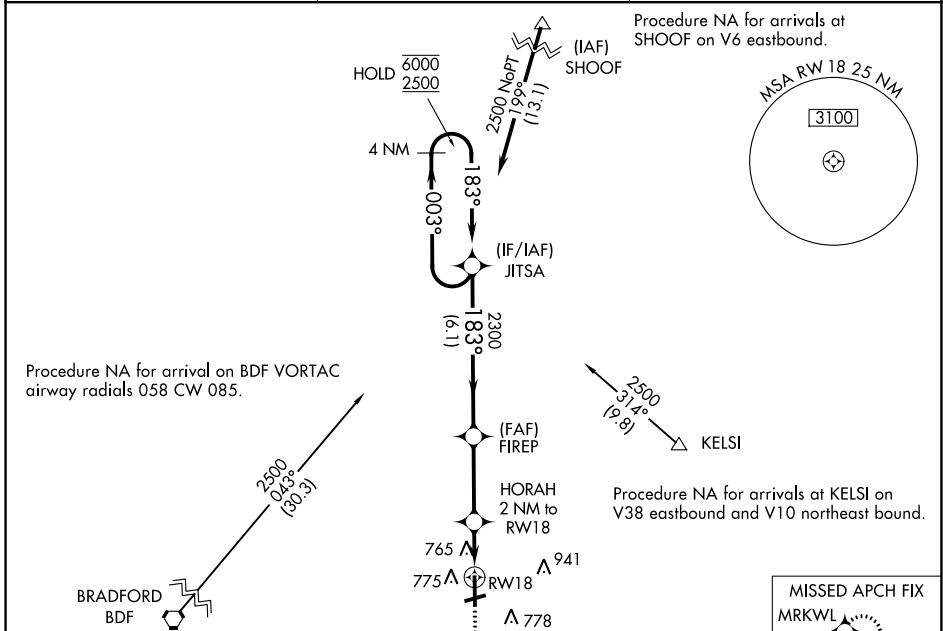
▼ Rwy 18 helicopter visibility reduction below $\frac{3}{4}$ SM NA.
▲ For uncompensated Baro-VNAV systems, LNAV/VNAV NA below -16°C or above 54°C.

MISSED APPROACH: Climb to 2500 direct MRKWL and hold.

AWOS-3
120.025

CHICAGO CENTER
123.75 259.1

UNICOM
123.0 (CTAF) 0



CATEGORY	A	B	C	D
LPV DA		939-1	285 (300-1)	
LNAV/VNAV DA		926-1	272 (300-1)	
LNAV MDA		1020-1	366 (400-1)	
C CIRCLING	1120-1 466 (500-1)	1240-1 586 (600-1)	1260-1 $\frac{3}{4}$ 606 (700-1 $\frac{3}{4}$)	1460-2 $\frac{1}{2}$ 806 (900-2 $\frac{1}{2}$)

EC-3, 22 FEB 2024 to 21 MAR 2024

EC-3, 22 FEB 2024 to 21 MAR 2024

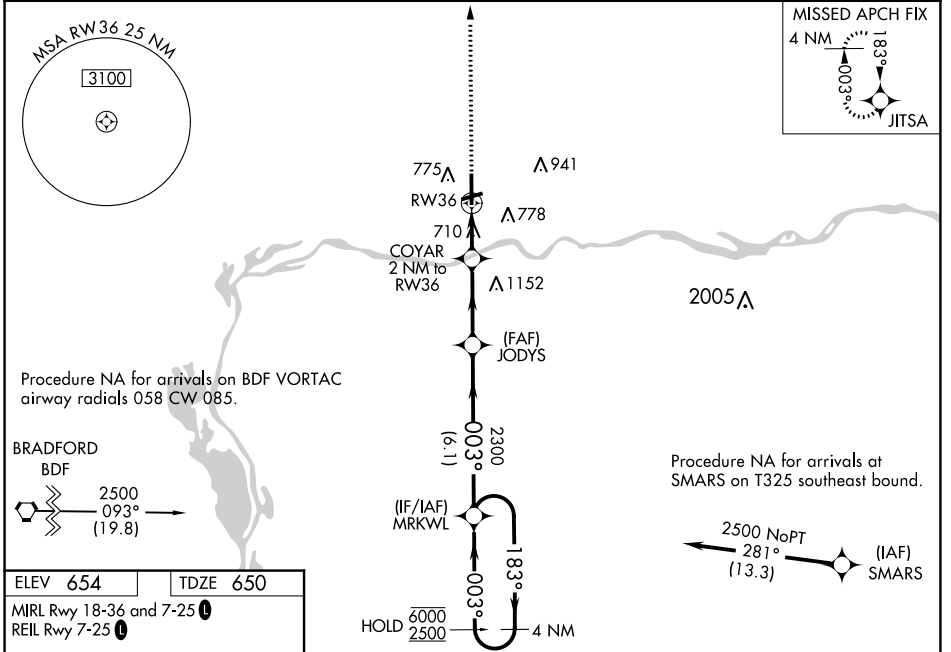
WAAS CH 82037 W36A	APP CRS 003°	Rwy Idg TDZE 650 Apt Elev 654	5999
--	------------------------	---	-------------

RNAV (GPS) RWY 36

ILLINOIS VALLEY RGNL-WALTER A DUNCAN FLD (VYS)

RNP APCH - GPS.		 MISSED APPROACH: Climb to 2500 direct JITSA and hold.
 Inop table does not apply. For uncompensated Baro-VNAV systems, LNAV/VNAV NA below -16°C or above 54°C.		

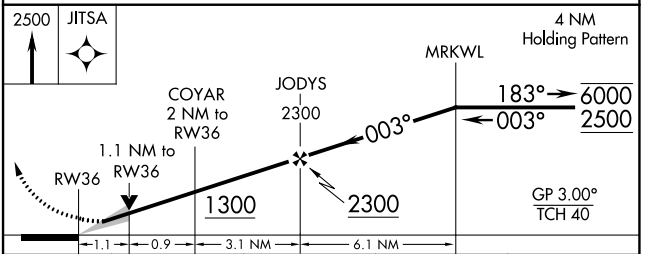
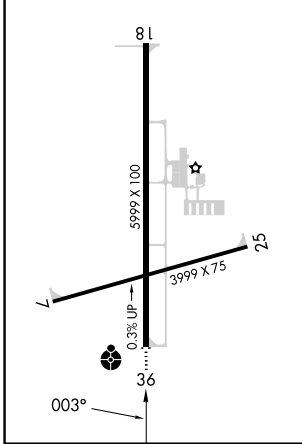
AWOS-3 120.025	CHICAGO CENTER 123.75 259.1	UNICOM 123.0 (CTAF)
--------------------------	---------------------------------------	-------------------------------



EC-3, 22 FEB 2024 to 21 MAR 2024

EC-3, 22 FEB 2024 to 21 MAR 2024

ELEV 654	TDZE 650
MIRL Rwy 18-36 and 7-25	
REIL Rwy 7-25	



CATEGORY	A	B	C	D
LPV DA		900-1	250 (300-1)	
LNAV/VNAV DA		900-1	250 (300-1)	
LNAV MDA		1020-1	370 (400-1)	
CIRCLING	1120-1 466 (500-1)	1240-1 586 (600-1)	1260-1¾ 606 (700-1¾)	1460-2½ 806 (900-2½)