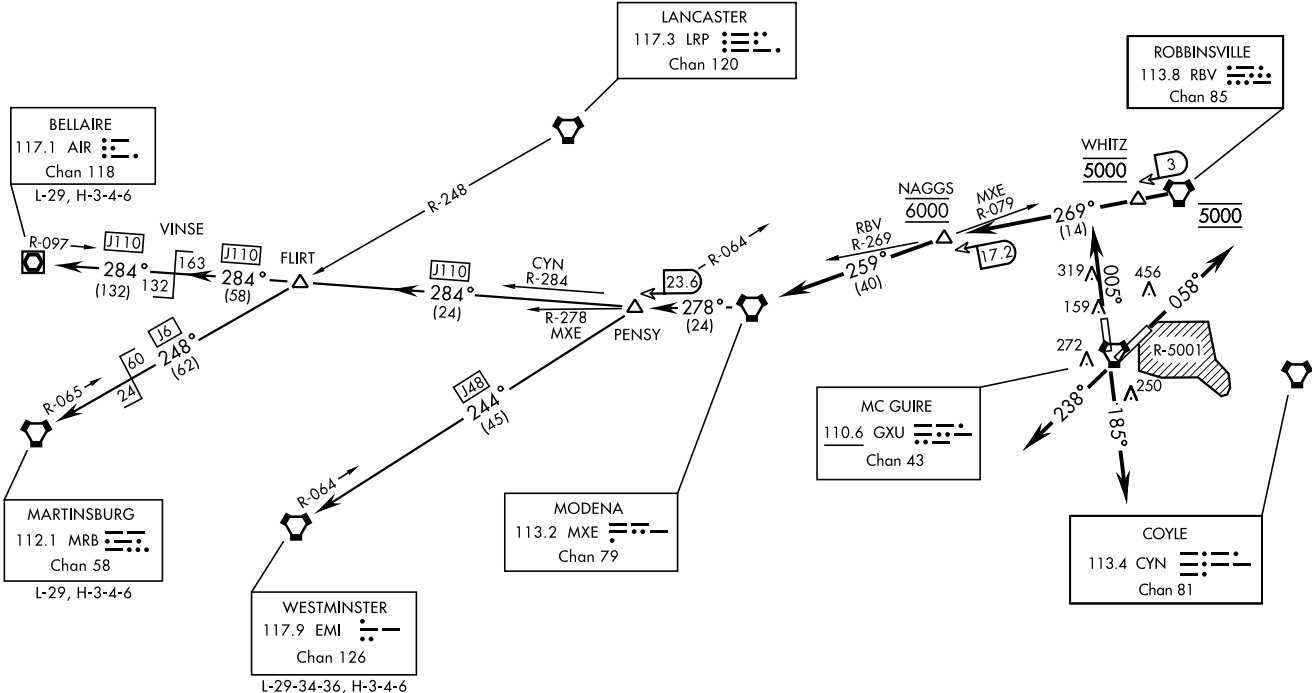


Rwy	Knots	60	120	180	240	300	360
6	V/V(fpm)	436	872	1308	1744	2180	2616
18	V/V(fpm)	351	702	1053	1404	1755	2106
24	V/V(fpm)	359	718	1077	1436	1795	2154
36	V/V(fpm)	421	842	1263	1684	2105	2526

ATC Climb Rate to 5000

# RADAR REQUIRED UNTIL CROSSING MXE VORTAC R-278/23.6 DME (PENSY)

ATIS 110.6 270.1  
 CLNC DEL  
 135.2 335.8  
 GND CON  
 121.8 275.8  
 MC GUIRE TOWER  
 118.65 255.6  
 MC GUIRE DEP CON  
 126.475 363.8



(Continued on next page)

NOTE: Chart not to scale

20030

MC GUIRE FLD, (JOINT BASE MC GUIRE DIX LAKEHURST) (KWRI)  
**MODENA FOUR DEPARTURE (MXE4•MXE)** WRIGHTSTOWN, NEW JERSEY

SHL-150 [USAF]

DEPARTURE ROUTE DESCRIPTION

TAKE-OFF RWY 6: Climb on a 058° track, thence.....

TAKE-OFF RWY 18: Climb on a 185° track, thence.....

TAKE-OFF RWY 24: Climb on a 238° track, thence.....

TAKE-OFF RWY 36: Climb on a 005° track, thence.....

... via RADAR vectors to RBV VORTAC. Cross RBV at 5000. Then intercept and fly RBV R-269 to RBV R-269/3 DME (WHITZ) and RBV R-269/17.2 DME (NAGGS). Cross WHITZ at 5000, cross NAGGS at 6000. Intercept and fly MXE VORTAC R-079 to MXE VORTAC, thence....

via (transition) or (assigned route)

BELLAIRE TRANSITION (MXE4,AIR): Via MXE R-278 to MXE R-278/23.6 DME (PENSY).

Join J110 to AIR VOR/DME.

MARTINSBURG TRANSITION (MXE4,MRB): Via MXE R-278 to MXE R-278/23.6 DME (PENSY).

Join J110 and J6 to MRB VORTAC.

WESTMINSTER TRANSITION (MXE4,EMI): Via MXE R-278 to MXE R-278/23.6 DME (PENSY).

Join J48 to EMI VORTAC. For Non-RNAV equipped aircraft only.

NE-2, 09 SEP 2021 to 07 OCT 2021

NE-2, 09 SEP 2021 to 07 OCT 2021

**MODENA FOUR DEPARTURE (MXE4•MXE)**

Orig: 08NOV18

WRIGHTSTOWN, NEW JERSEY  
MC GUIRE FLD, (JOINT BASE MC GUIRE DIX LAKEHURST) (KWRI)

20030

POINT PLEASANT FIVE DEPARTURE (PTPL5 • MANTA) WRIGHTSTOWN, NEW JERSEY

SHL-150 [USAF]

Chart not to scale  
(Continued on next page)

HAMPTON  
113.6 HTO  
Chan 83

SHLEP  
L-33-34, H-3-6

ROBBINSVILLE  
113.8 RBV  
Chan 85

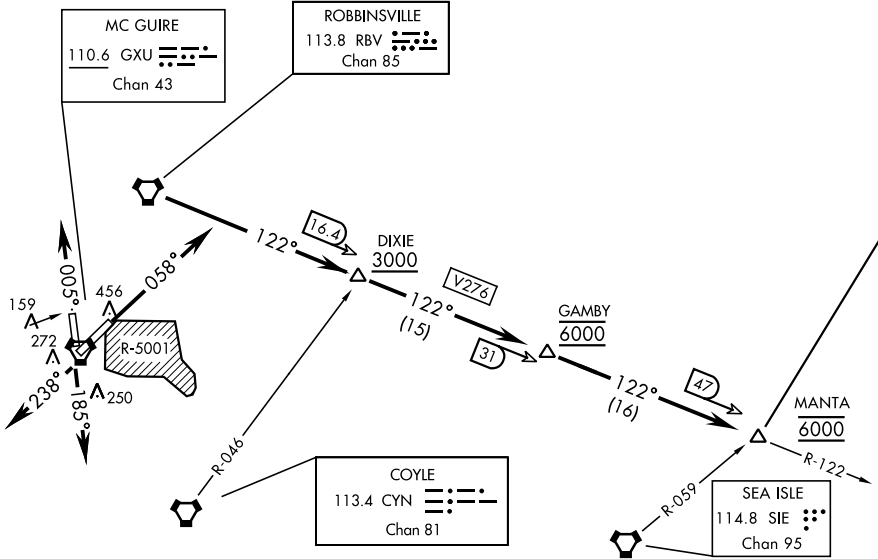
MC GUIRE  
110.6 GXU  
Chan 43

COYLE  
113.4 CYN  
Chan 81

SEA ISLE  
114.8 SIE  
Chan 95

# RADAR REQUIRED TO RBV R-122/16.4 DME (DIXIE)

ATIS 110.6 270.1  
CLNC DEL  
135.2 335.8  
GND CON  
121.8 275.8  
MC GUIRE TOWER  
118.65 255.6  
MC GUIRE DEP CON  
126.475 363.8



NE-2, 09 SEP 2021 to 07 OCT 2021

NE-2, 09 SEP 2021 to 07 OCT 2021

POINT PLEASANT FIVE DEPARTURE (PTPL5 • MANTA) WRIGHTSTOWN, NEW JERSEY  
MC GUIRE FLD. (JOINT BASE MC GUIRE DIX LAKEHURST) (KWRI)  
Orig 02MAR17

20030

MC GUIRE FLD, (JOINT BASE MC GUIRE DIX LAKEHURST) (KWRI)  
**POINT PLEASANT FIVE DEPARTURE (PTPL5•MANTA)** WRIGHTSTOWN, NEW JERSEY

SHL-150 (USAF)



DEPARTURE ROUTE DESCRIPTION  
(Continued)

TAKE-OFF RWY 6: Climb on a 058° track, thence....

TAKE-OFF RWY 18: Climb on a 185° track, thence....

TAKE-OFF RWY 24: Climb on a 238° track, thence....

TAKE-OFF RWY 36: Climb on a 005° track, thence....

...via RADAR vectors to RBV VORTAC R-122/16.4 DME (DIXIE). Cross DIXIE dt or above 3000. Fly RBV R-122 (V276) to RBV R-122/31 DME (GAMBY) and RBV R-122/47 DME (MANTA). Cross GAMBY and MANTA at 6000, thence....

via (transition) or (assigned route)

SHLEP TRANSITION (PTPL5.SHLEP): Via V139/J121 to HTO VORTAC R-236/19.2 DME (SHLEP).

NE-2, 09 SEP 2021 to 07 OCT 2021

NE-2, 09 SEP 2021 to 07 OCT 2021

**POINT PLEASANT FIVE DEPARTURE (PTPL5•MANTA)**

Orig 02MARI7

WRIGHTSTOWN, NEW JERSEY  
MC GUIRE FLD, (JOINT BASE MC GUIRE DIX LAKEHURST) (KWRI)

20030

POTTSTOWN THREE DEPARTURE (PTW3 • PTW)

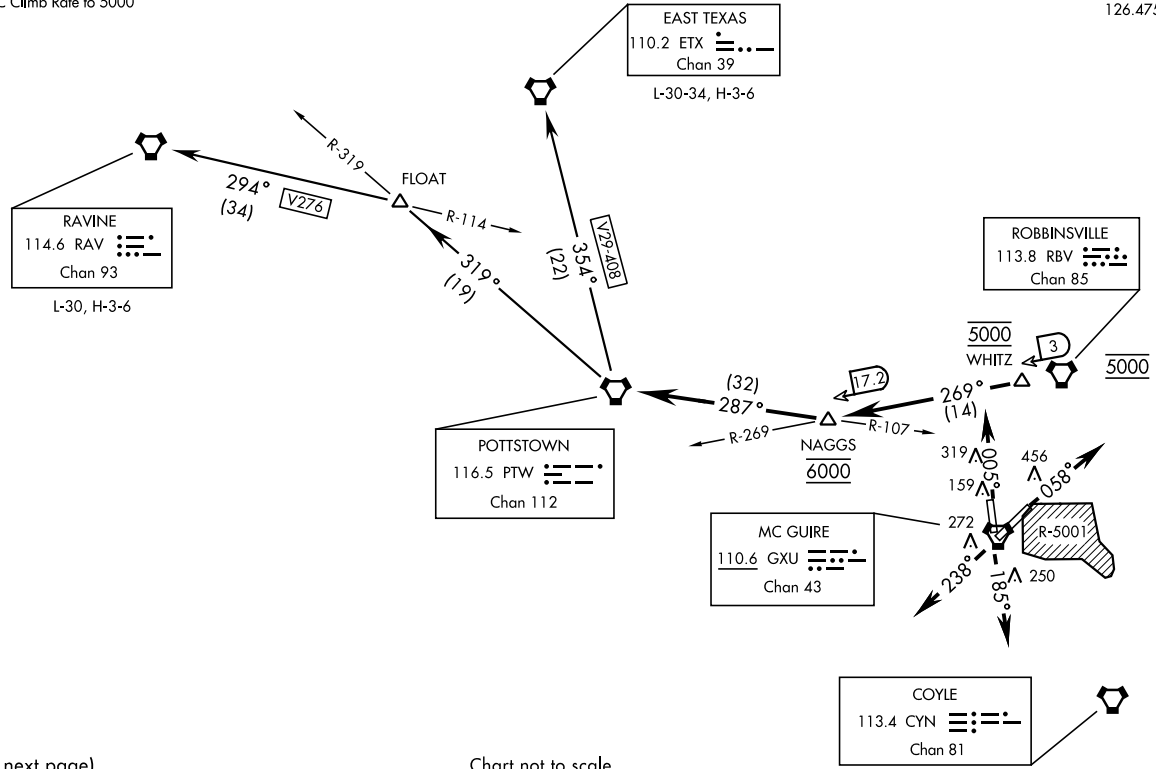
WRIGHTSTOWN, NEW JERSEY

ATIS 110.6 270.1  
 CLNC DEL  
 135.2 335.8  
 GND CON  
 121.8 275.8  
 MC GUIRE TOWER  
 118.65 255.6  
 MC GUIRE DEP CON  
 126.475 363.8

# RADAR REQUIRED

Rwy	Knots	60	120	180	240	300	360
6	V/V(fpm)	436	872	1308	1744	2180	2616
18	V/V(fpm)	351	702	1053	1404	1755	2106
24	V/V(fpm)	359	718	1077	1436	1795	2154
36	V/V(fpm)	421	842	1263	1684	2105	2526

ATC Climb Rate to 5000'



(Continued on next page)

Chart not to scale

POTTSTOWN THREE DEPARTURE (PTW3 • PTW)

WRIGHTSTOWN, NEW JERSEY

MC GUIRE FLD. (JOINT BASE MC GUIRE DIX LAKEHURST) (KWRI)



20030

**POTTSTOWN THREE DEPARTURE (PTW3•PTW)**

MC GUIRE FLD, (JOINT BASE MC GUIRE DIX LAKEHURST) (KWRI)  
WRIGHTSTOWN, NEW JERSEY

SHL-150 (USAF)

**DEPARTURE ROUTE DESCRIPTION**  
(Continued)

TAKE-OFF RWY 6: Climb on a 058° track, thence....

TAKE-OFF RWY 18: Climb on a 185° track, thence....

TAKE-OFF RWY 24: Climb on a 238° track, thence....

TAKE-OFF RWY 36: Climb on a 005° track, thence....

...via RADAR vectors to RBV VORTAC. Cross RBV at 5000. Then intercept and fly RBV R-269 to RBV R-269/3 DME (WHITZ) and RBV R-269/17.2 DME (NAGGS). Cross WHITZ at 5000, cross NAGGS at 6000. Intercept and fly PTW VORTAC R-107 to PTW VORTAC thence....

via (transition) or (assigned route)

EAST TEXAS TRANSITION (PTW3.ETX): (non-turbojet a/c only) Via V29/V408 to ETX VORTAC.

RAVINE TRANSITION (PTW3.RAV): Via PTW R-319 to RAV R-114 intersection (FLOAT) then via V276 to RAV VORTAC.

**POTTSTOWN THREE DEPARTURE (PTW3•PTW)**

Orig 02MAR17

WRIGHTSTOWN, NEW JERSEY  
MC GUIRE FLD, (JOINT BASE MC GUIRE DIX LAKEHURST) (KWRI)