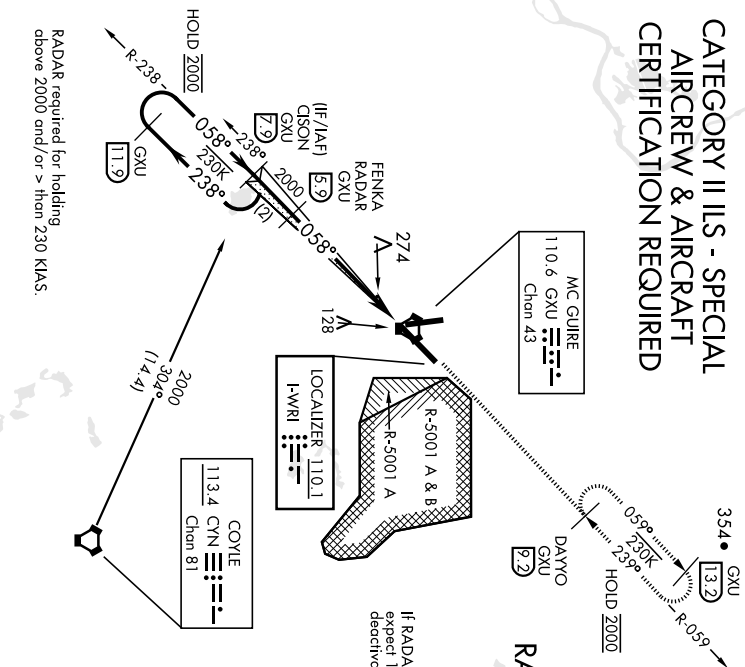


LOC I-WRI <b>110.1</b>	APCH CRS <b>058°</b>	Frq./Idg TDZE Elev Appt Elev <b>131</b> <b>141</b>	AL-150 (USAF)	(JOINT BASE MC GUIRE DIX LAKEHURST) (KVMR)	23138
RADAR or DME required to identify the FAF.		ALSF-2 	MISSED APPROACH: Climb to 2000 via GXU R-059 to DAYVO and hold. Alternate Missed Approach Instructions: Climb to 2000 via GXU R-059 to DAYVO, expect further clearance from ATIS.		
ATIS <b>110.6 270.1</b>	MC GUIRE APP CON/DEP CON <b>126.475 363.8</b>	MC GUIRE TOWER <b>118.65 255.6</b>	GND CON <b>121.8 275.8</b>	CLNC DEL <b>135.2 335.8</b>	PAR

**CATEGORY II ILS - SPECIAL  
AIRCREW & AIRCRAFT  
CERTIFICATION REQUIRED**

Missed Approach holding at DAYVO NA when R-5001 is active with aerial gunnery.

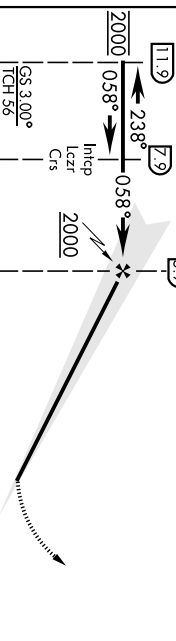
**RADAR REQUIRED  
WHEN R-5001  
IS ACTIVE**



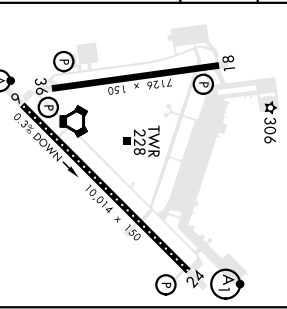
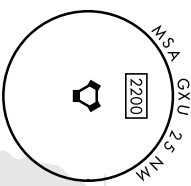
RADAR required for holding above 2000 and/or > than 230 KIAS.

EMERG SAFE ALT 100 NM 5100 FROM GXU VORTAC

GXU <b>11.9</b>	CISON GXU <b>7.9</b>	FENKA RADAR GXU <b>5.9</b>	2000 VGS1 and ILS glidepaths not coincident; VGS1 angle 3.00° TCH 76'	2000 GXU <b>8.2</b>	DAYVO GXU <b>8.2</b>
--------------------	----------------------------	-------------------------------------	--	---------------------------	----------------------------



ELEV 141	TDZE 131
----------	----------



CATEGORY SLS 6	A	B	C	D	E
RA 91/112	100	DA 231			

WRIGHTSTOWN, NEW JERSEY  
40°01'N-74°36'W  
MC GUIRE FLD,  
(JOINT BASE MC GUIRE DIX LAKEHURST) (KVMR)  
Amch 4 18MAN23

**ILS RWY 6 (CAT II)**

WRIGHTSTOWN, NEW JERSEY

# ILS or LOC RWY 24

LOC I-JTQ <b>110.1</b>	APCH CRS <b>238°</b>	Rwy Idg TDZE Arprt Elev	<b>10,014</b> <b>117</b> <b>141</b>
---------------------------	-------------------------	-------------------------------	---

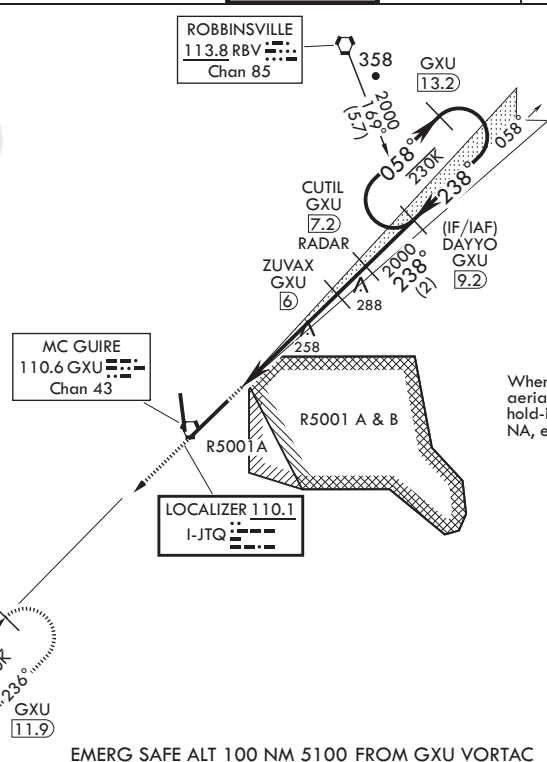
AL-150 (USAF)  
MC GUIRE FIELD (JOINT BASE MC GUIRE DIX LAKEHURST) (KWRI)

**V** \* When ALS inop, increase RVR to 40, vis to 3/4 mile. +RVR 18 authorized with use of FD or AP or HUD to DA.  
\*\* When ALS inop, increase CAT A/B RVR to 55, vis to 1 mile, CAT C/D vis to 1 3/8 miles.  
\*\*\* Circling NA SE of Rwy 24 and E of Rwy 36 when R-5001 A/B Active.

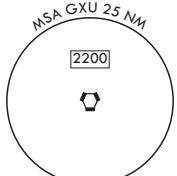
ALSF-1 	MISSED APPROACH: Climb to 2000 via GXU R-236 to CISON and hold.
------------	---

ATIS <b>110.6 270.1</b>	MC GUIRE APP CON/DEP CON <b>126.475 363.8</b>	TOWER <b>118.65 255.6</b>	GND CON <b>121.8 275.8</b>	CLNC DEL <b>135.2 335.8</b>	PAR
----------------------------	--	------------------------------	-------------------------------	--------------------------------	-----

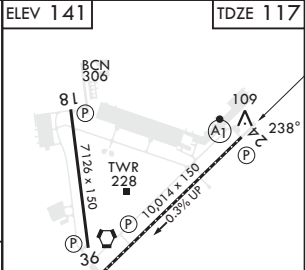
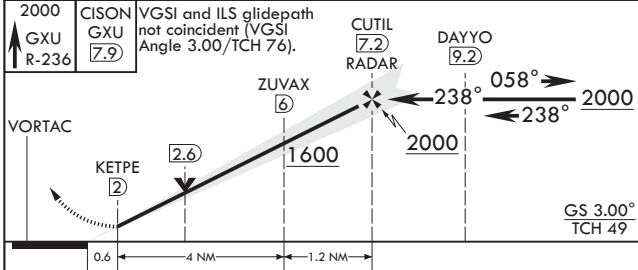
RADAR or DME required to identify the FAF.  
RADAR required when R-5001 is active.  
RADAR required for holding above 2000 and/or > 230 KIAS.  
If RADAR inoperative, expect 15 min delay for deactivation of R-5001.



When R-5001 is active with aerial gunnery, DAYYO hold-in-lieu of procedure turn NA, expect RADAR vectors.



EMERG SAFE ALT 100 NM 5100 FROM GXU VORTAC



CATEGORY	A	B	C	D	E
S-ILS 24*†	317/24		200	(200-½)	
S-LOC 24**	580/24	463 (500-½)	580/50	463	(500-1)
<b>C</b> CIRCLING***	680-1 539 (600-1)		700-1½ 559 (600-1½)	700-2 559 (600-2)	1200-3 1059 (1100-3)

ELEV 141						TDZE 117					
HIRL all Rwys REIL Rwys 18, 36 TDZL/CL Rwy 6											
FAF to MAP 5.2 NM											
Knots	60	90	120	150	180						
Min:Sec	5:12	3:28	2:36	2:05	1:44						

WRIGHTSTOWN, NEW JERSEY  
Amdt 6 18MAY23

MC GUIRE FIELD (JOINT BASE MC GUIRE DIX LAKEHURST) (KWRI)  
40°01'N - 74°36'W

# ILS or LOC RWY 24

NE-2, 22 FEB 2024 to 21 MAR 2024

NE-2, 22 FEB 2024 to 21 MAR 2024

# IIS or LOC Rwy 6

MC GUIRE FLD,  
(KWMRI)

AL-150 (USAF)

JOINT BASE MC GUIRE DIX LAKEHURST (KWMRI)

LOC I-WRI	APCH CRS	Req'd Idg	<b>10 014</b>
<b>110.1</b>	<b>058°</b>	TDZE	<b>131</b>
		Appl Elev	<b>141</b>

RADAR or DME required to identify the FAF.

ALST-2

MISSED APPROACH: Climb to 2000 via GXU R-059 to DAYYO and hold.

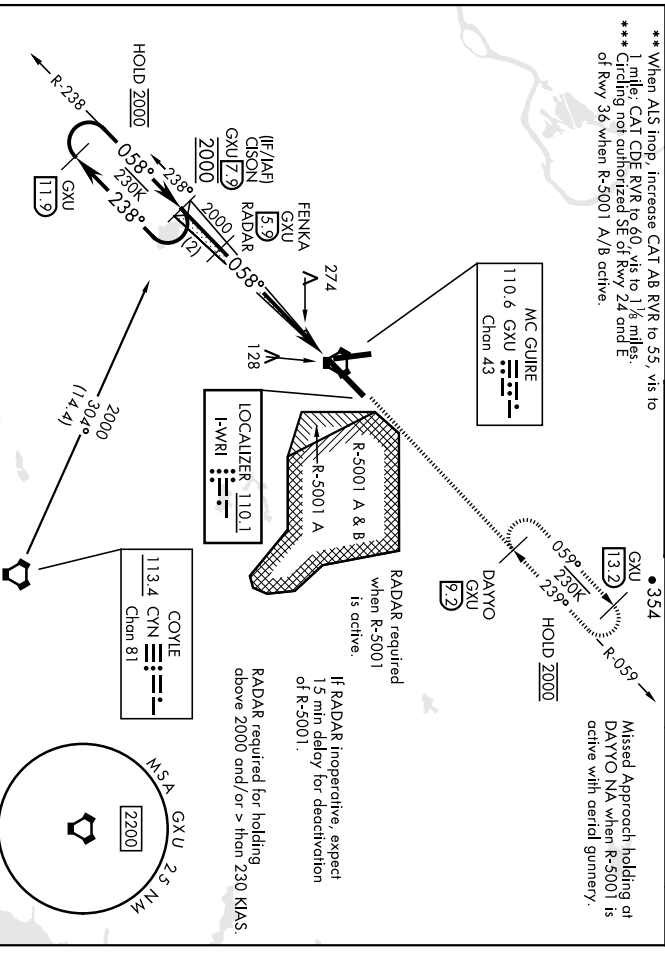
**▼** \* When TDZ/CL Inop, increase RVR to 24; RVR 18 still authorized with use of FD or AP or HUD to DA. When ALS Inop, increase RVR to 40; vis to 3/4 mile.

Alternate Missed Approach Instruction: Climb to 2000 via GXU R-059 to DAYYO, expect further clearance from ATC.

ATIS	MC GUIRE APP CON/DEP CON	MC GUIRE TOWER	GND CON	CLNC DEL	PAR
<b>110.6 270.1</b>	<b>126.475 363.8</b>	<b>118.65 255.6</b>	<b>121.8 275.8</b>	<b>135.2 335.8</b>	

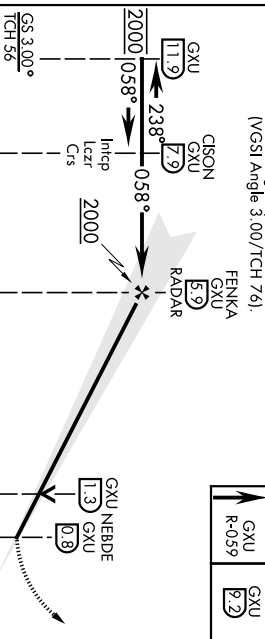
\*\*When ALS Inop, increase CAT AB RVR to 55, vis to 1 mile; CAT CDE RVR to 60, vis to 1 1/8 miles. Climb not authorized SE of Rwy 24 and E of Rwy 36 when R-5001 A/B active.

Missed Approach holding at DAYYO NA when R-5001 is active with aerial gunnery.

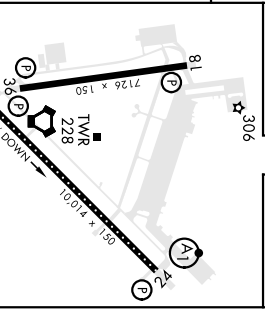


## EMERG SAFE ALT 100 NM 5100 FROM GXU VORTAC

VGSI and ILS glideslope not coincident  
(VGSI Angle 3.00/TCH 76).



ELEV	141	TDZE	131
------	-----	------	-----



CATEGORY	A					B					C					D					E								
	331/118					200					540/40					409					(400-34)								
S-ILS 6 **																													
S-LOC 6 ***	540/24 409 (400-1/2)					540/40					700-1 1/2 409					700-2 1200-3					10591100-3								
CIRCLING ***	680-1 539 (600-1)					700-1 1/2 409					700-2 559 (600-2)					10591100-3					559 (600-1 1/2)								
	540/24 409 (400-1/2)					540/40					700-1 1/2 409					700-2 1200-3					10591100-3								
Knots					60					90					120					150					180				
FAF to MAP 5.2 NM					5:12					3:28					2:36					2:05					1:44				

HRL all twys  
REL Rwys 18, 36  
TDZ/CL Rwy 6

# IIS or LOC Rwy 6

WRIGHTSTOWN, NEW JERSEY

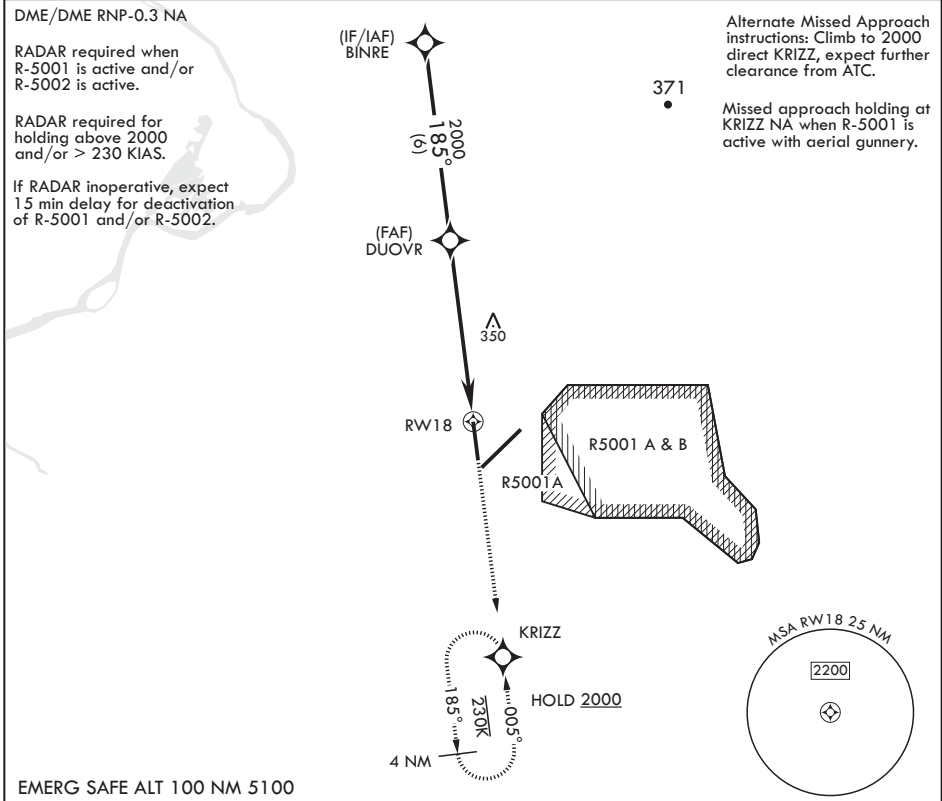
# RNAV (GPS) RWY 18

APCH CRS	Rwy Idg	7126
185°	TDZE	123
	Arpt Elev	141

AL-150 (USAF)  
MC GUIRE FIELD (JOINT BASE MC GUIRE DIX LAKEHURST) (KWRI)

**▼** \* Circling NA SE of Rwy 24 and E of Rwy 36 when R-5001 A/B Active. MISSED APPROACH: Climb to 2000 direct KRIZZ and hold.

ATIS 110.6 270.1	MC GUIRE APP CON/DEP CON 126.475 363.8	TOWER 118.65 255.6	GND CON 121.8 275.8	CLNC DEL 135.2 335.8	PAR
---------------------	---	-----------------------	------------------------	-------------------------	-----



BINRE		DUOVR		RW18	
2000		2000		1.3 NM to RW18	
3.10° ∠ TCH 68		5.5 NM		5.5 NM	
CATEGORY	A	B	C	D	E
LNAV MDA	600-1	477 (500-1)	600-1½	477 (500-1½)	
<b>C</b> CIRCLING*	680-1	539 (600-1)	700-1½ 559 (600-1½)	700-2 559 (600-2)	1200-3 1059 (1100-3)

2000

↑

KRIZZ

ELEV 141

TDZE 123

HIRL all Rwy's  
REIL Rwy's 18, 36  
TDZL/CL Rwy 6

NE-2, 22 FEB 2024 to 21 MAR 2024

NE-2, 22 FEB 2024 to 21 MAR 2024

WRIGHTSTOWN, NEW JERSEY

MC GUIRE FIELD (JOINT BASE MC GUIRE DIX LAKEHURST) (KWRI)

Amdt 6 18MAY23

40°01'N - 74°36'W

# RNAV (GPS) RWY 18

WRIGHTSTOWN, NEW JERSEY

# RNAV (GPS) RWY 24

WAAS CH 91359 W24A	APCH CRS 238°	Rwy ldg TDZE Arprt Elev	10,014 117 141
--------------------------	------------------	-------------------------------	----------------------

AL-150 (USAF)  
MC GUIRE FIELD (JOINT BASE MC GUIRE DIX LAKEHURST) (KWRI)

**▼** \* When ALS inop, increase RVR to 40, vis to 3/4 mile.  
 \*\* When ALS inop, increase vis to 1 3/8 miles.  
 \*\*\* When ALS inop increase CAT AB RVR to 55, vis to 1 mile, CAT CDE vis to 1 3/8 miles.

ALSF-1 MISSED APPROACH: Climb to 2000 direct CISON and hold.

ATIS 110.6 270.1	MC GUIRE APP CON/DEP CON 126.475 363.8	TOWER 118.65 255.6	GND CON 121.8 275.8	CLNC DEL 135.2 335.8	PAR
---------------------	---	-----------------------	------------------------	-------------------------	-----

\*\*\*\* Circling NA SE of Rwy 24 and E of Rwy 36 when R-5001 A/B Active.

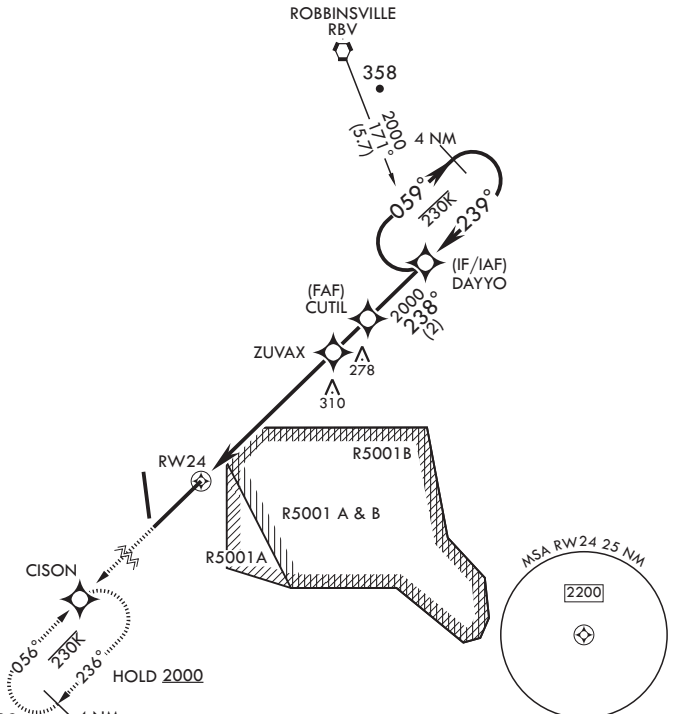
DME/DME RNP-0.3 NA  
 For uncompensated Baro-VNAV systems, Procedure NA below -15°C (5°F) or above 53°C (128°F).

RADAR required when R-5001 is active.

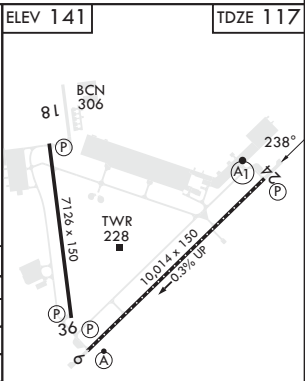
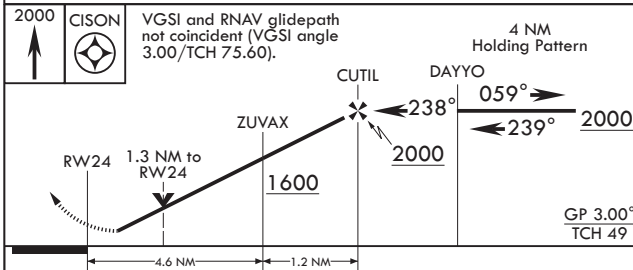
RADAR required for holding above 2000 and/or > 230 KIAS.

If RADAR inoperative, expect 15 min delay for deactivation of R-5001.

When R-5001 is active with aerial gunnery, DAYYO hold-in-lieu of procedure turn NA, expect RADAR vectors.



EMERG SAFE ALT 100 NM 5100



CATEGORY	A	B	C	D	E
LPV DA*	317/24		200	(200-1/2)	
LNAV/VNAV DA**	580/50		463	(500-1)	
LNAV MDA***	580/24	463 (500-1/2)	580/50	463	(500-1)
<b>C</b> CIRCLING****	680-1	539 (600-1)	700-1 1/2 559 (600-1 1/2)	700-2 559 (600-2)	1200-3 1059 (1100-3)

HIRL all Rwy's  
 REIL Rwy's 18, 36  
 TDZL/CL Rwy 6

WRIGHTSTOWN, NEW JERSEY  
 Amdt 7 18MAY23

MC GUIRE FIELD (JOINT BASE MC GUIRE DIX LAKEHURST) (KWRI)  
 40°01'N - 74°36'W

# RNAV (GPS) RWY 24

NE-2, 22 FEB 2024 to 21 MAR 2024

NE-2, 22 FEB 2024 to 21 MAR 2024

APCH CRS	Rwy Idg	7126
005°	TDZE	129
	Arpt Elev	141

AL-150 (USAF)  
MC GUIRE FIELD (JOINT BASE MC GUIRE DIX LAKEHURST) (KWRI)

**V** \* Circling NA SE of Rwy 24 and E of Rwy 36 when R-5001 A/B Active. MISSED APPROACH: Climb to 2000 direct DUOVR, then turn right direct FATBU and hold.

ATIS 110.6 270.1	MC GUIRE APP CON/DEP CON 126.475 363.8	TOWER 118.65 255.6	GND CON 121.8 275.8	CLNC DEL 135.2 335.8	PAR
---------------------	---	-----------------------	------------------------	-------------------------	-----

DME/DME RNP-0.3 NA

RADAR required when R-5001 is active.

RADAR required for holding above 2000 and/or > 230 KIAS.

If RADAR inoperative, expect 1.5 min delay for deactivation of R-5001.

Alternate Missed Approach instructions: Climb to 2000 direct DUOVR, expect further clearance from ATC.

Missed approach holding at FATBU NA when R-5001 is active with aerial gunnery.

EMERG SAFE ALT 100 NM 5100

NE-2, 22 FEB 2024 to 21 MAR 2024

NE-2, 22 FEB 2024 to 21 MAR 2024

2000	DUOVR	ELEV 141	TDZE 129		
CATEGORY	A	B	C	D	E
LNAV MDA	560-1	431 (500-1)	560-1¼	431	(500-1¼)
<b>C</b> CIRCLING*	680-1	539 (600-1)	700-1½ 559 (600-1½)	700-2 559 (600-2)	1200-3 1059 (1100-3)

WRIGHTSTOWN, NEW JERSEY

# RNAV (GPS) RWY 6

WAAS CH 91356 W06A	APCH CRS 058°	Rwy ldg TDZE Arpt Elev	10,014 131 141
--------------------------	------------------	------------------------------	----------------------

AL-150 (USAF)  
MC GUIRE FIELD (JOINT BASE MC GUIRE DIX LAKEHURST) (KWRI)

**▼** \* When TDZ/CL lights inop, increase RVR to 24. When ALS inop, increase RVR to 40, vis to 3/4 mile.  
\*\* When ALS inop, increase vis to 1 1/4 miles.  
\*\*\* When ALS inop, increase CAT AB RVR to 55, vis to 1 mile; CAT CDE vis to 1 1/4 miles.

ALSF-2 MISSED APPROACH: Climb to 2000 direct DAYYO and hold.

ATIS 110.6 270.1	MC GUIRE APP CON/DEP CON 126.475 363.8	TOWER 118.65 255.6	GND CON 121.8 275.8	CLNC DEL 135.2 335.8	PAR
---------------------	---	-----------------------	------------------------	-------------------------	-----

\*\*\*\* Circling NA SE of Rwy 24 and E of Rwy 36 when R-5001 A/B Active.

DME/DME RNP-0.3 NA

For uncompensated Baro-VNAV systems, Procedure NA below -15°C (5°F) or above 52°C (126°F).

Alternate Missed Approach instructions: Climb to 2000 direct DAYYO, expect further clearance from ATC.

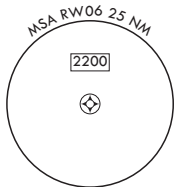
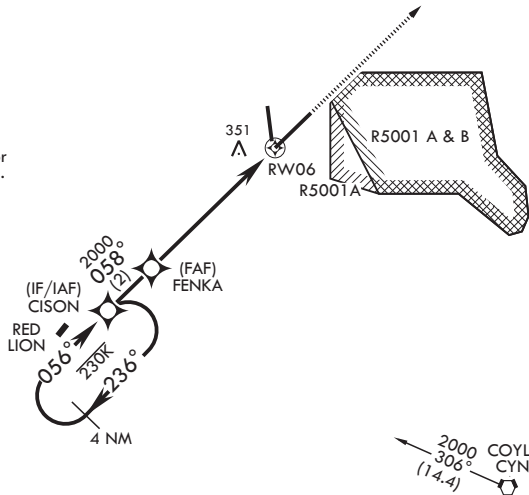
Missed approach holding at DAYYO NA when R-5001 is active with aerial gunnery.



RADAR required when R-5001 is active.

RADAR required for holding above 2000 and/or > 230 KIAS.

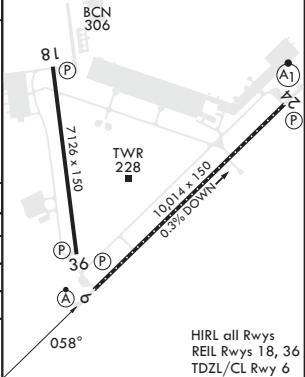
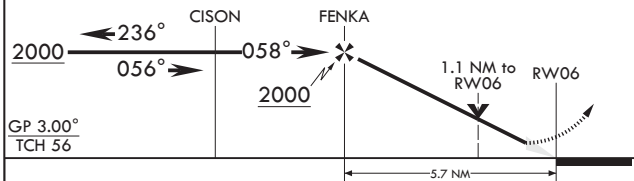
If RADAR inoperative, expect 15 min delay for deactivation of R-5001.



EMERG SAFE ALT 100 NM 5100

VGSI and RNAV glidepath not coincident (VGSI angle 3.00/TCH 76).

2000 DAYYO ELEV 141 TDZE 131



CATEGORY	A	B	C	D	E
LPV DA*	331/18		200	(200-1/2)	
LNAV/VNAV DA**	560/40		429	(500-3/4)	
LNAV MDA***	560/24	429 (500-1/2)	560/40	429 (500-3/4)	
<b>C</b> CIRCLING****	680-1	539 (600-1)	700-1 1/2 (600-1 1/2)	700-2 (600-2)	1200-3 (1100-3)

HIRL all Rwys  
REIL Rws 18, 36  
TDZL/CL Rwy 6

WRIGHTSTOWN, NEW JERSEY

MC GUIRE FIELD (JOINT BASE MC GUIRE DIX LAKEHURST) (KWRI)

Amdt 7 18MAY23

40°01'N - 74°36'W

# RNAV (GPS) RWY 6

NE-2, 22 FEB 2024 to 21 MAR 2024

NE-2, 22 FEB 2024 to 21 MAR 2024

WRIGHTSTOWN, NEW JERSEY

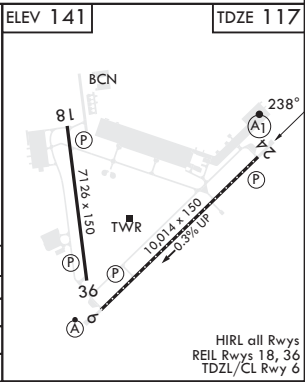
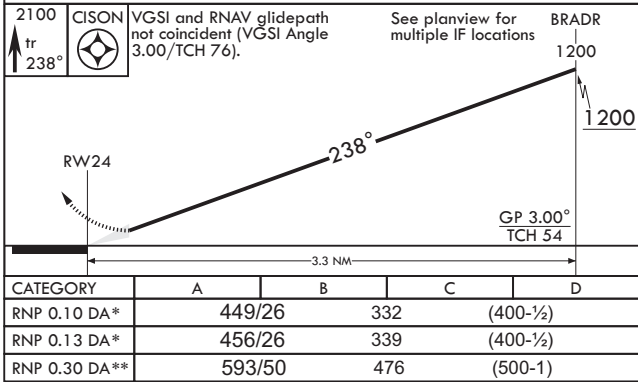
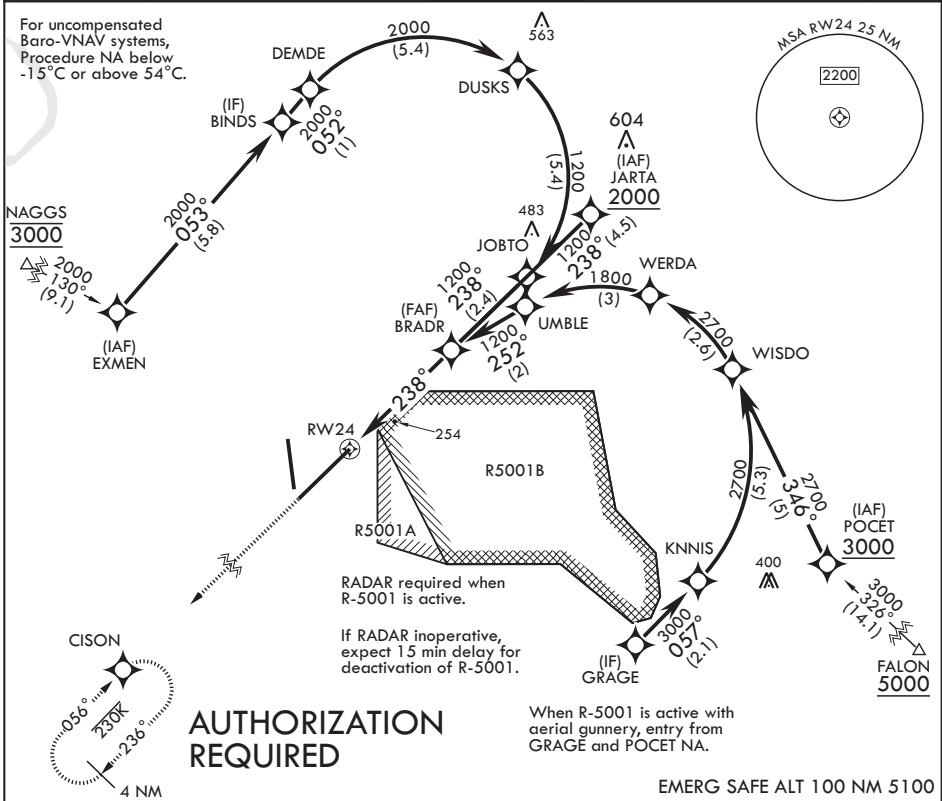
# RNAV (RNP) Z RWY 24

APCH CRS	Rwy Idg	10,014
238°	TDZE	117
	Arpt Elev	141

AL-150 (USAF)  
MC GUIRE FIELD (JOINT BASE MC GUIRE DIX LAKEHURST) (KWRI)

RNP AR APCH. From EXMEN and GRAGE: RF.	ALSf-1	MISSED APPROACH: Climb to 2100 on track 238° to CISON and hold, continue to climb-in-hold to 2100.
<p>* When ALS inop increase RVR to 50, vis to 1 mile. ** When ALS inop increase vis to 1 3/8 miles.</p>		

ATIS	MC GUIRE APP CON/DEP CON	TOWER	GND CON	CLNC DEL	PAR
110.6 270.1	126.475 363.8	118.65 255.6	121.8 275.8	135.2 335.8	



NE-2, 22 FEB 2024 to 21 MAR 2024

NE-2, 22 FEB 2024 to 21 MAR 2024

WRIGHTSTOWN, NEW JERSEY

Orig 20APR23

MC GUIRE FIELD (JOINT BASE MC GUIRE DIX LAKEHURST) (KWRI)

40°01'N - 74°36'W

# RNAV (RNP) Z RWY 24



WRIGHTSTOWN, NEW JERSEY

# VOR/DME or TACAN RWY 18

23138

VOR/TACAN GXU  
**110.6**  
 Chan **43**

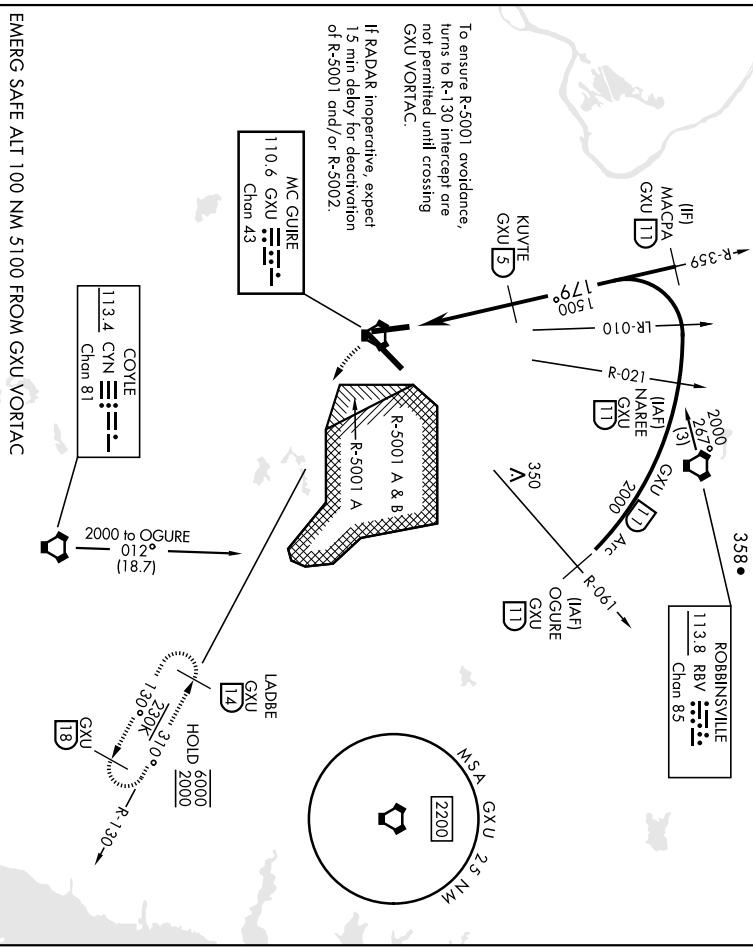
Freq./Idg  
**71.26**

AL-150 (USAF) (JOINT BASE MC GUIRE DIX LAKEHURST) (KWMRI)  
 MC GUIRE FLD,  
 MC GUIRE RWY 18

RADAR required when R-5001 and/or R-5002 is active.  
 \* Circling NA SE of RWY 24 and E of RWY 36 when R-5001 A/B active.

MISSED APPROACH: Climb to 2000 via GXU VORTAC R-130 to LADBE and hold, DO NOT turn prior to GXU.

ATIS <b>110.6 270.1</b>	MC GUIRE APP CONV/DEP CON <b>126.475 363.8</b>	MC GUIRE TOWER <b>118.65 255.6</b>	GND CON <b>121.8 275.8</b>	CINC DEL <b>135.2 335.8</b>	PAR
----------------------------	---	---------------------------------------	-------------------------------	--------------------------------	-----



To ensure R-5001 avoidance, turns to R-130 intercept are not permitted until crossing GXU VORTAC.

If RADAR inoperative, expect 1.5 min delay for deactivation of R-5001 and/or R-5002.

EMERG SAFE ALT 100 NM 5100 FROM GXU VORTAC

OGURE R-061 GXU <b>11</b>	NAREE R-021 GXU <b>11</b>	MACPA R-359 GXU <b>11</b>	KUVITE GXU <b>5</b>	GXU <b>23</b>	PURE GXU <b>3</b>	2000 GXU R-130	LADBE GXU <b>174</b>	ELEV 141	TDZE 123
2000	2000	2000	1500	179°	1500	2000	2000	179°	
Arc		Arc		Arc		Arc		Arc	
3.18°		3.18°		3.18°		3.18°		3.18°	
TCH 68		TCH 68		TCH 68		TCH 68		TCH 68	
3.5 NM		3.5 NM		3.5 NM		3.5 NM		3.5 NM	
0.4		0.4		0.4		0.4		0.4	
CATEGORY	A	B	C	D	E				
S-18	640-1	517 (500-1)	640-136	517 (500-136)	1200-3				
<b>CIRCLING*</b>	680-1	539 (600-1)	700-1 1/2	559 (600-1 1/2)	700-2	559 (600-2)	1200-3	1059 (1100-3)	

WRIGHTSTOWN, NEW JERSEY  
 40°01'N-74°36'W  
 MC GUIRE FLD,  
 (JOINT BASE MC GUIRE DIX LAKEHURST) (KWMRI)  
**VOR/DME or TACAN RWY 18**  
 Amdt 8 18MAY23

WRIGHTSTOWN, NEW JERSEY

VOR/DME or TACAN RWY 24

VORTAC GXU <b>110.6</b> Chan 43	APCH CRS <b>243°</b>	Rwy Idg TDZE Arprt Elev	<b>10,014</b> <b>117</b> <b>141</b>
---------------------------------------	-------------------------	-------------------------------	---

AL-150 (USAF)  
MC GUIRE FIELD (JOINT BASE MC GUIRE DIX LAKEHURST) (KWRI)

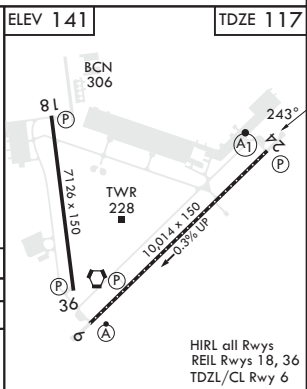
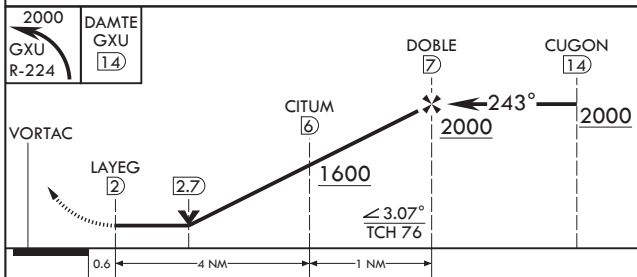
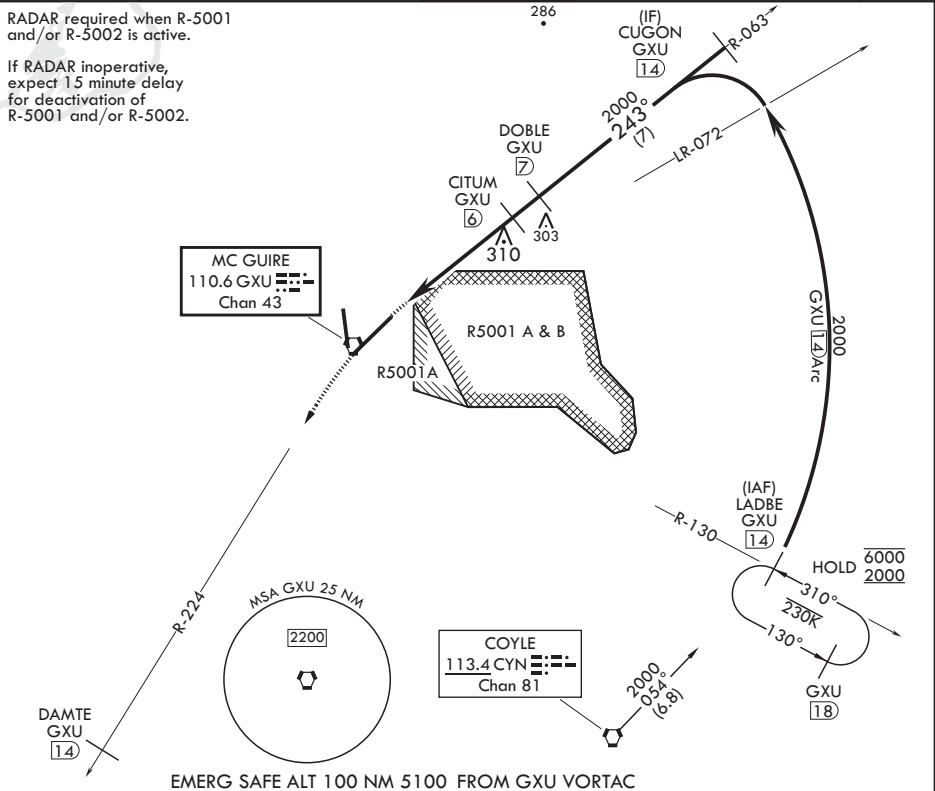
⚠ \* When ALS inop, increase CAT AB RVR to 55 and vis to 1 mile, CAT CDE vis to 1 1/2 miles.  
\*\* Circling NA SE of Rwy 24 and E of Rwy 36 when R-5001 A/B Active.

ALSF-1 	MISSED APPROACH: Climb to 2000 via GXU R-224 to DAMTE, Expect further clearance from ATC.
------------	---

ATIS <b>110.6 270.1</b>	MC GUIRE APP CON/DEP CON <b>126.475 363.8</b>	TOWER <b>118.65 255.6</b>	GND CON <b>121.8 275.8</b>	CLNC DEL <b>135.2 335.8</b>	PAR
----------------------------	--	------------------------------	-------------------------------	--------------------------------	-----

RADAR required when R-5001 and/or R-5002 is active.

If RADAR inoperative, expect 1.5 minute delay for deactivation of R-5001 and/or R-5002.



CATEGORY	A	B	C	D	E
S-24*	640/24 523 (500-1/2)	640/55 523 (500-1)			
CIRCLING**	680-1 539 (600-1)	700-1 1/2 559 (600-1/2)	700-2 559 (600-2)	1200-3 1059 (1100-3)	

HIRL all Rwys  
REIL Rwy 18, 36  
TDZL/CL Rwy 6

WRIGHTSTOWN, NEW JERSEY

Amdt 8 18MAY23

MC GUIRE FIELD (JOINT BASE MC GUIRE DIX LAKEHURST) (KWRI)

40°01'N - 74°36'W

VOR/DME or TACAN RWY 24

NE-2, 22 FEB 2024 to 21 MAR 2024

NE-2, 22 FEB 2024 to 21 MAR 2024

WRIGHTSTOWN, NEW JERSEY

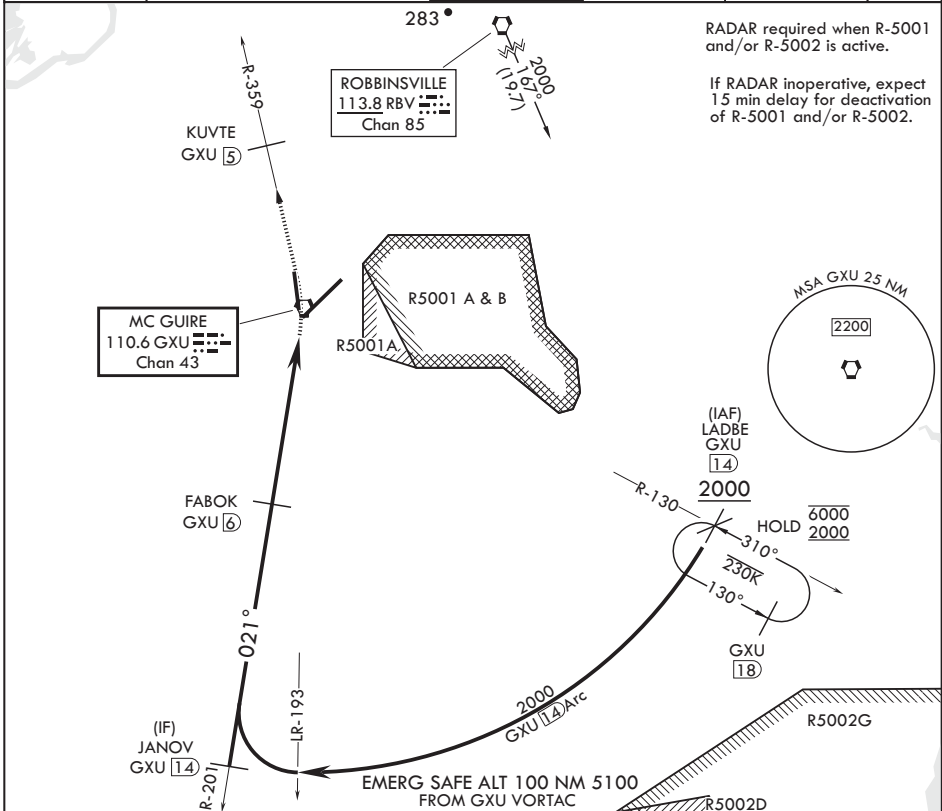
VOR/DME or TACAN RWY 36

VORTAC GXU 110.6 Chan 43	APCH CRS 021°	Rwy Idg 7126	TDZE 129
		Arprt Elev 141	

AL-150 (USAF)  
MC GUIRE FIELD (JOINT BASE MC GUIRE DIX LAKEHURST) (KWRI)

⚠ \* Circling NA SE of Rwy 24 and E of Rwy 36 when R-5001 A/B Active. MISSED APPROACH: Climb to 2000 via GXU R-359 to KUVTE, expect further clearance with ATC.

ATIS 110.6 270.1	MC GUIRE APP CON/DEP CON 126.475 363.8	TOWER 118.65 255.6	GND CON 121.8 275.8	CLNC DEL 135.2 335.8	PAR
---------------------	---	-----------------------	------------------------	-------------------------	-----

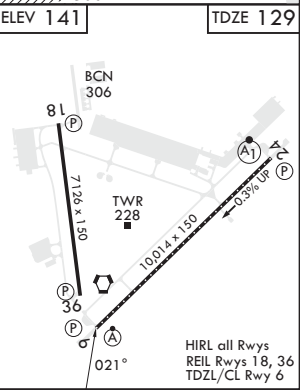


RADAR required when R-5001 and/or R-5002 is active.  
If RADAR inoperative, expect 15 min delay for deactivation of R-5001 and/or R-5002.

NE-2, 22 FEB 2024 to 21 MAR 2024

NE-2, 22 FEB 2024 to 21 MAR 2024

LADBE GXU R-130 14 RBV 19.7	JANOV GXU R-201 14	FABOK GXU 6	GXU R-359 2000	KUVTE GXU 5	ELEV 141	TDZE 129
2000		2000				
GXU R-14 Arc		2.92° TCH 46				
		5.1 NM				
		0.8				
CATEGORY	A	B	C	D	E	
S-36	600-1	471 (500-1)	600-1½	471	(500-1½)	
Ⓢ CIRCLING*	680-1	539 (600-1)	700-1½ 559 (600-1½)	700-2 559 (600-2)	1200-3 1059 (1100-3)	



WRIGHTSTOWN, NEW JERSEY

MC GUIRE FIELD (JOINT BASE MC GUIRE DIX LAKEHURST) (KWRI)

Amdt 7 18MAY23

40°01'N - 74°36'W

VOR/DME or TACAN RWY 36

HIRL all Rwys  
REIL Rwys 18, 36  
TDZL/CL Rwy 6

WRIGHTSTOWN, NEW JERSEY

# VOR/DME or TACAN RWY 6

23138

VORTAC GXU <b>110.6</b> Chen <b>43</b>	APCH CRS <b>044°</b>	Req'd Idg TDZE <b>131</b> Aptl Elev <b>141</b>	<b>100.014</b>
--	-------------------------	--	----------------

AL-150 [USAF]

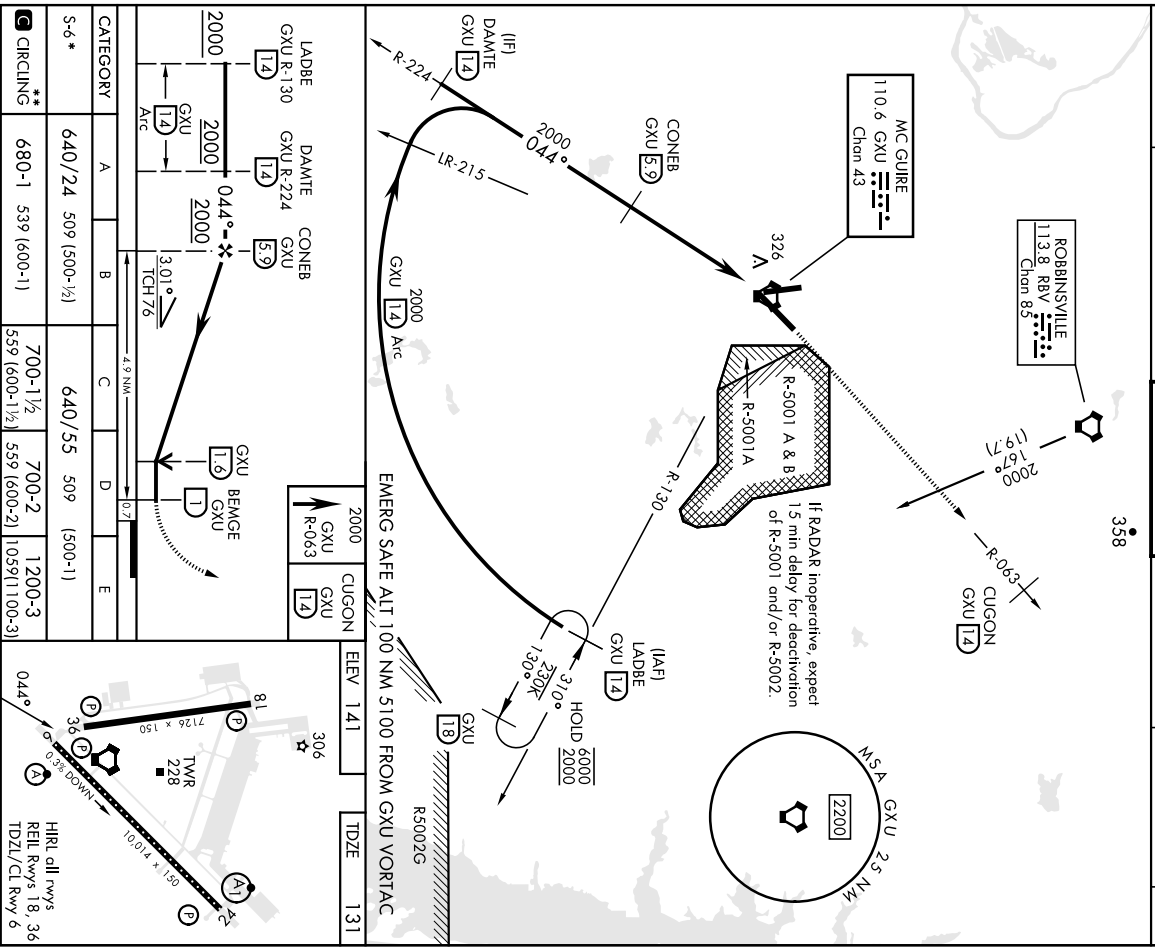
JOINT BASE MC GUIRE DIX LAKEHURST (KWMR)  
MC GUIRE FLD,  
(KWMR)

**▲** \* When AIS Inop, increase CAT A/B RVR to 55 and vis to 1 mile. CAT C/D E vis to 1 3/8 miles.  
\*\* Circling NA SE of RWY 24 and E of RWY 36 when R-5001 A/B active.

AIS F-2  
[Symbol]

MISSED APPROACH: Climb to 2000 via GXU VORTAC R-063 to CUGON, expect further clearance from ATC.

ATIS <b>110.6 270.1</b>	MC GUIRE APP CON/DEP CON <b>126.475 363.8</b>	MC GUIRE TOWER <b>118.65 255.6</b>	GND CON <b>121.8 275.8</b>	CINCLC DEL <b>135.2 335.8</b>	PAR
----------------------------	--	---------------------------------------	-------------------------------	----------------------------------	-----



NE-2, 22 FEB 2024 to 21 MAR 2024

NE-2, 22 FEB 2024 to 21 MAR 2024

WRIGHTSTOWN, NEW JERSEY  
Amdt 7 18MAY23

40°01'N-74°33'W  
JOINT BASE MC GUIRE DIX LAKEHURST (KWMR)  
VOR/DME or TACAN RWY 6