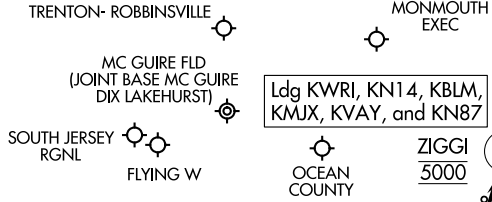


(WAALK.WAALK1) 21168
WAALK ONE ARRIVAL

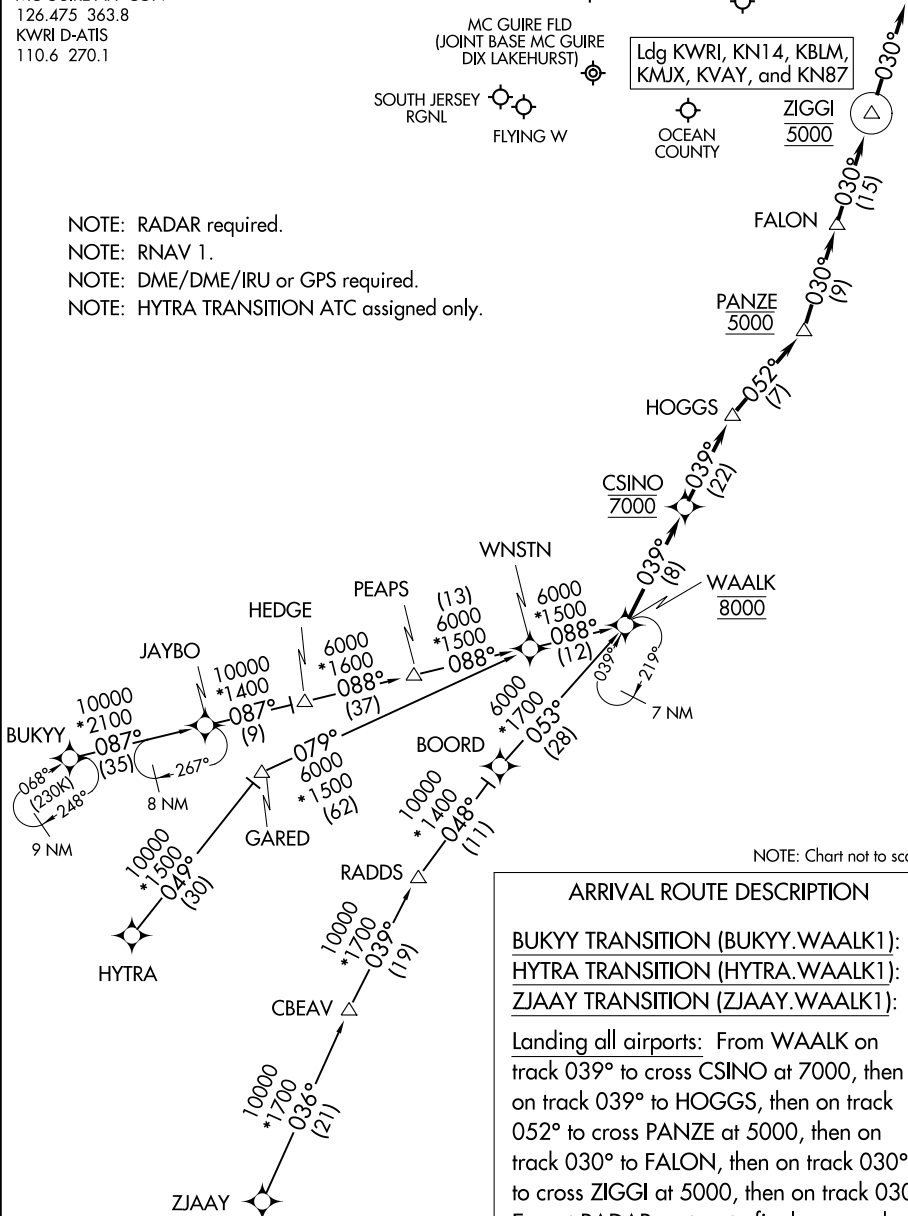
AL-5623 (FAA)

TOMS RIVER, NEW JERSEY

ATLANTIC CITY APP CON
 124.6 327.125
 MC GUIRE APP CON
 126.475 363.8
 KWRI D-ATIS
 110.6 270.1



- NOTE: RADAR required.
- NOTE: RNAV 1.
- NOTE: DME/DME/IRU or GPS required.
- NOTE: HYTRA TRANSITION ATC assigned only.



NOTE: Chart not to scale.

ARRIVAL ROUTE DESCRIPTION

- BUKY Y TRANSITION (BUKY Y.WAALK1):**
- HYTRA TRANSITION (HYTRA.WAALK1):**
- ZJAAY TRANSITION (ZJAAY.WAALK1):**

Landing all airports: From WAALK on track 039° to cross CSINO at 7000, then on track 039° to HOGGS, then on track 052° to cross PANZE at 5000, then on track 030° to FALON, then on track 030° to cross ZIGGI at 5000, then on track 030°.

Expect RADAR vectors to final approach course.

WAALK ONE ARRIVAL
 (WAALK.WAALK1) 05NOV20

TOMS RIVER, NEW JERSEY

NE-2, 09 SEP 2021 to 07 OCT 2021

NE-2, 09 SEP 2021 to 07 OCT 2021