

LOC I-AYN 108.3	APP CRS 018°	Rwy Idg TDZE Apt Elev	4501 152 163
---------------------------	------------------------	-----------------------------	---

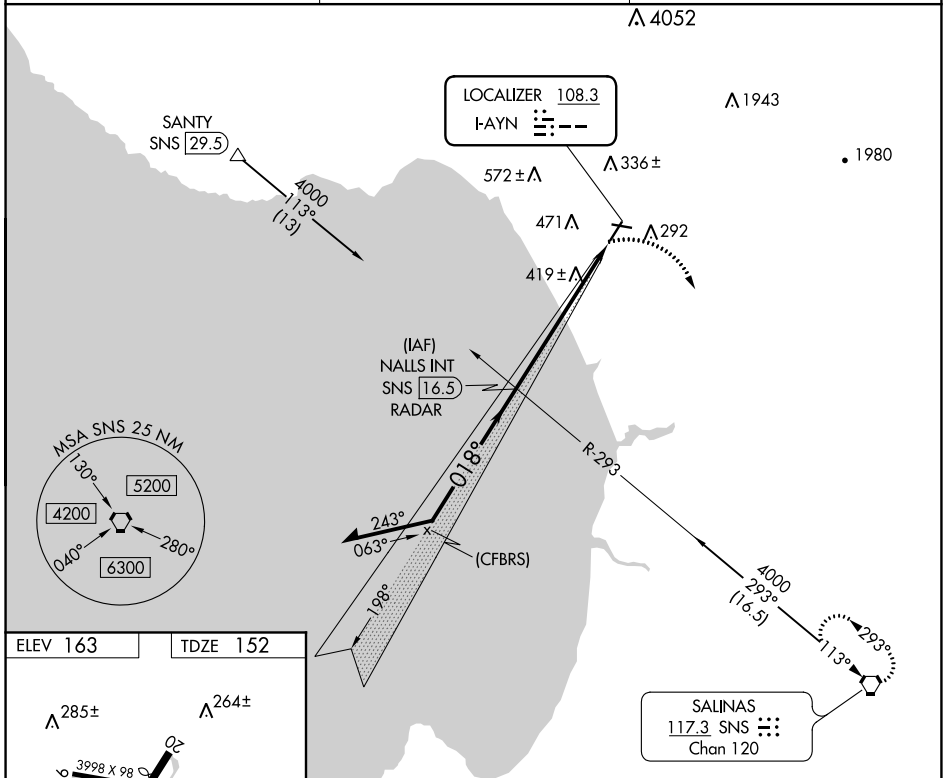
LOC RWY 2

WATSONVILLE MUNI (WVI)

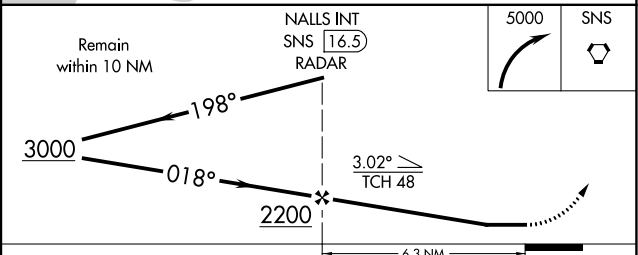
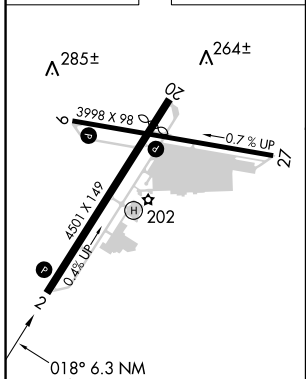
⚠ Circling Rwy 27 NA at night. When local altimeter setting not received, use Monterey altimeter setting and increase all MDAs 80 feet and visibility Cat C 1/8 SM and S-2 Cat D 1/8 SM. Circling NA west of Rwy 2-20. Rwy 2 helicopter visibility below 3/4 SM NA.

MISSED APPROACH: Climbing right turn to 5000 direct SNS VORTAC and hold, continue climb-in-hold to 5000.

ASOS 132.275	NORCAL APP CON 127.15 307.125	UNICOM 122.8 (CTAF) 0
------------------------	---	---------------------------------



ELEV 163	TDZE 152
----------	----------



	REIL Rwy 2	MIRL Rwy 2-20			
	FAF to MAP 6.3 NM				
Knots	60	90	120	150	180
Min:Sec	6:18	4:12	3:09	2:31	2:06
CATEGORY	A	B	C	D	
S-2	700-1	548 (600-1)	700-1 1/8	548 (600-1 1/8)	
CIRCLING	700-1	537 (600-1)	700-1 1/8	537 (600-1 1/8)	720-2
					557 (600-2)

SW-2, 20 MAY 2021 to 17 JUN 2021

SW-2, 20 MAY 2021 to 17 JUN 2021

RNAV (GPS) RWY 2

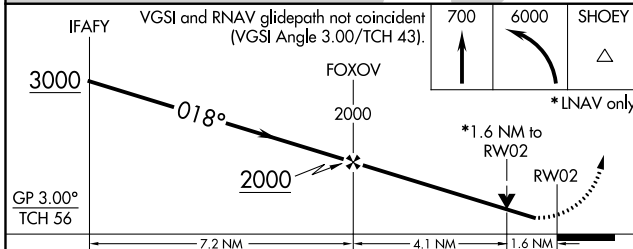
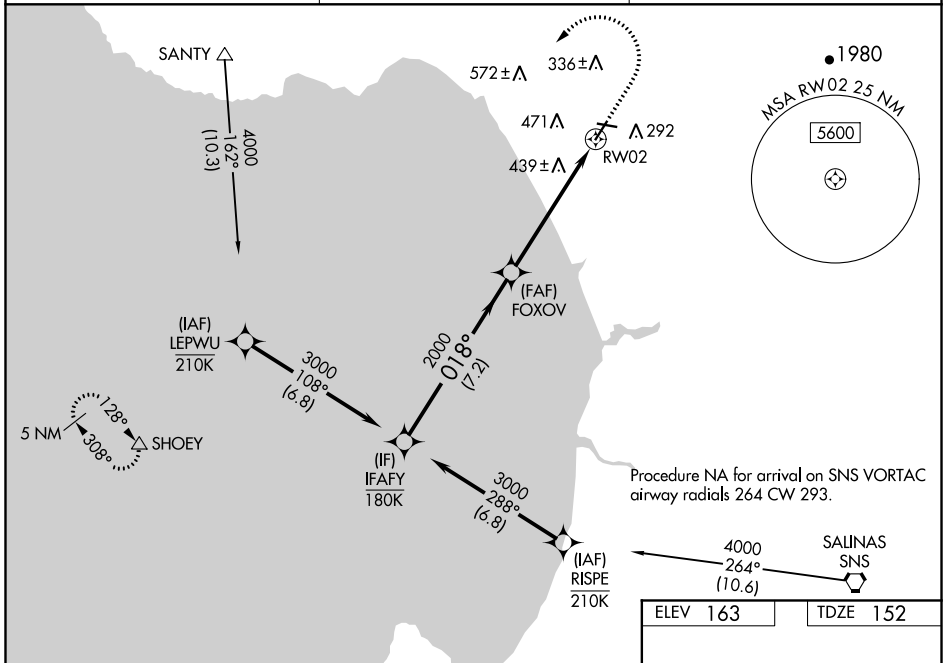
WATSONVILLE MUNI (WVI)

WAAS CH 50144 W02A	APP CRS 018°	Rwy Idg TDZE 152 Apt Elev 163	4501
--	------------------------	---	-------------

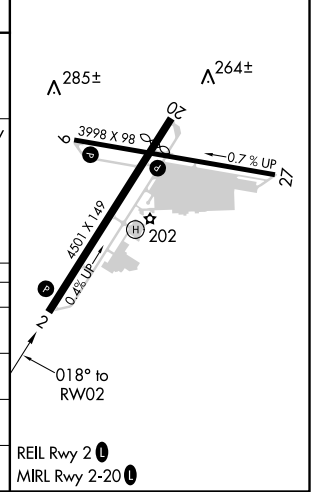
RNP APCH.
 ⚠ Circling Rwy 27 NA at night. Rwy 2 helicopter visibility reduction below 3/4 SM NA. For uncompensated Baro-VNAV systems, LNAV/VNAV NA below -2°C or above 54°C. Circling NA west of Rwy 2-20.

MISSED APPROACH: (Do not exceed 185K until SHOEY) Climb to 700 then climbing left turn to 6000 direct SHOEY and hold, continue climb-in-hold to 6000.

ASOS 132.275	NORCAL APP CON 127.15 307.125	UNICOM 122.8 (CTAF) 1
------------------------	---	--



ELEV 163	TDZE 152
----------	----------



CATEGORY	A	B	C	D
LPV DA	448-7/8 296 (300-7/8)			
LNAV/VNAV DA	772-1 3/4 620 (700-1 3/4)			
LNAV MDA	700-1 548 (600-1)	700-1 5/8 548 (600-1 5/8)		
CIRCLING	700-1 537 (600-1)	700-1 5/8 537 (600-1 5/8)		1100-3 937 (1000-3)

SW-2, 20 MAY 2021 to 17 JUN 2021

SW-2, 20 MAY 2021 to 17 JUN 2021

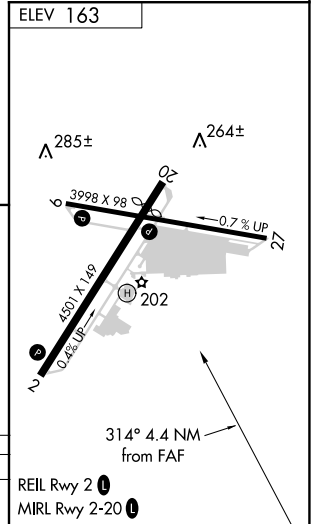
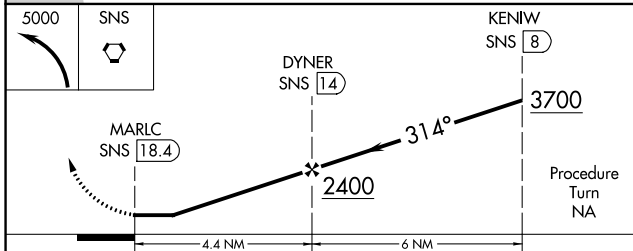
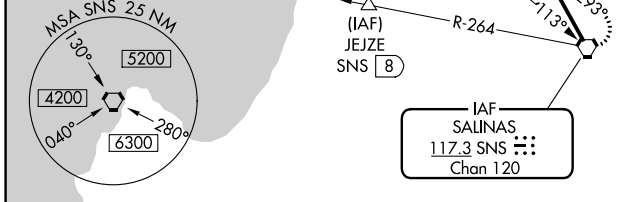
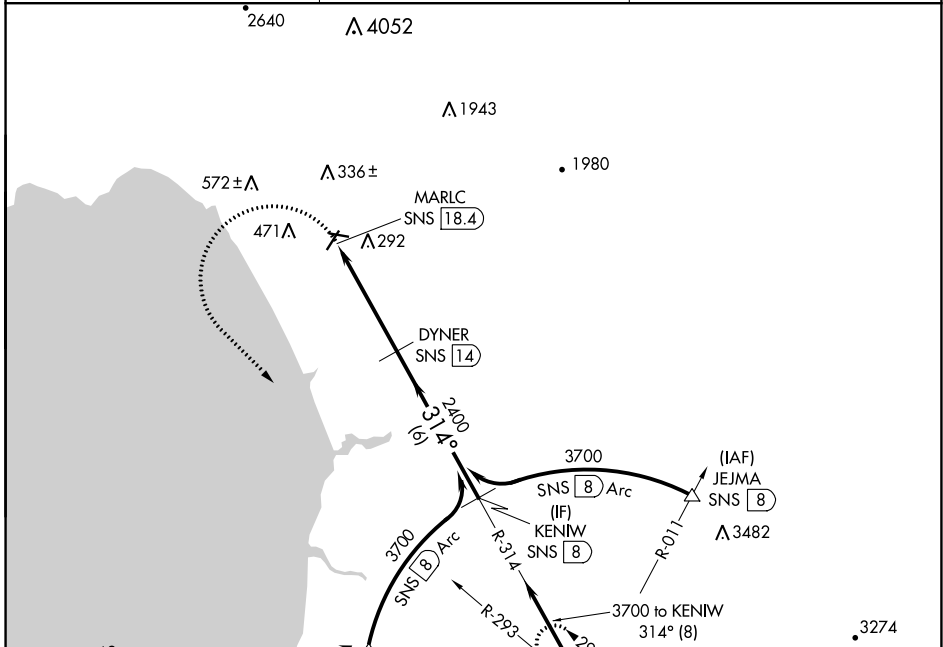
VORTAC SNS 117.3 Chan 120	APP CRS 314°	Rwy Idg TDZE Apt Elev N/A N/A 163
---	------------------------	---

VOR-A
WATSONVILLE MUNI (WVI)

⚠ Circling NA west of Rwy 2-20. When local altimeter setting not received, use Monterey altimeter setting and increase all MDA's 80 feet.
⚠ DME required. Circling Rwy 27 NA at night.

MISSED APPROACH: Climbing left turn to 5000 direct SNS VORTAC and hold, continue climb-in-hold to 5000.

ASOS 132.275	NORCAL APP CON 127.15 307.125	UNICOM 122.8 (CTAF) 📻
------------------------	---	--



CATEGORY	A	B	C	D
CIRCLING	1300-1¼ 1137 (1200-1¼)	1300-1½ 1137 (1200-1½)	1300-3	1137 (1200-3)

SW-2, 20 MAY 2021 to 17 JUN 2021

SW-2, 20 MAY 2021 to 17 JUN 2021