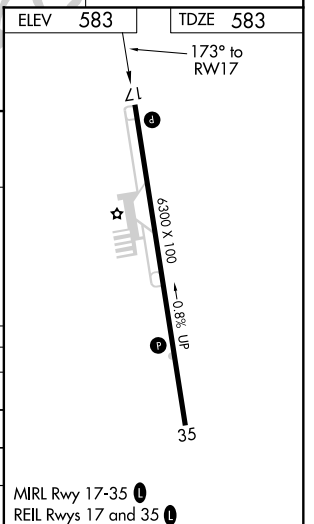
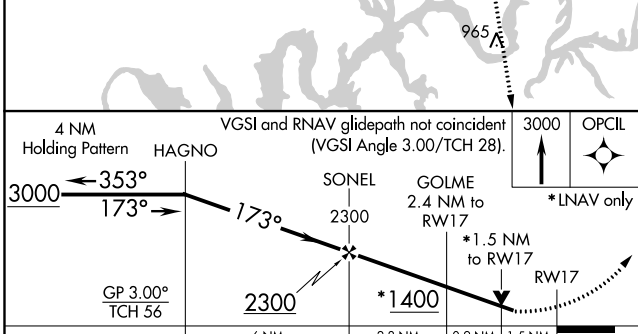
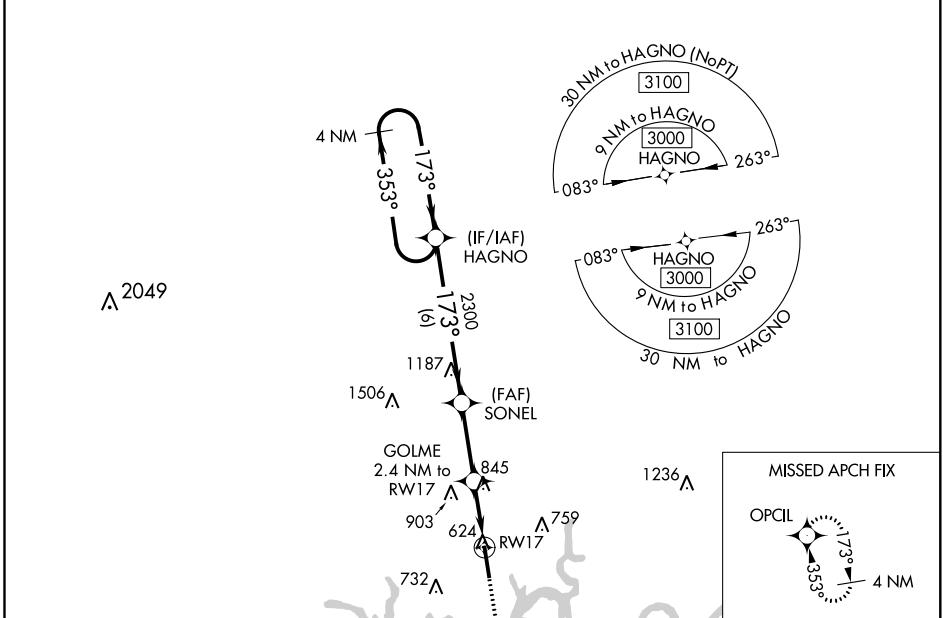


WAAS CH <b>70725</b> <b>W17A</b>	APP CRS <b>173°</b>	Rwy Idg TDZE Apt Elev	<b>6300</b> <b>583</b> <b>583</b>
--	------------------------	-----------------------------	---

# RNAV (GPS) RWY 17

MUSIC CITY EXEC (X.N.X)

RNP APCH.		MISSED APPROACH: Climb to 3000 direct OPCIL and hold.	
AWOS-3 <b>132.725</b>	NASHVILLE APP CON <b>118.4 360.7</b>	GCO <b>135.075</b>	UNICOM <b>123.05 (CTAF) 0</b>



CATEGORY	A	B	C	D
LPV DA		1069-1 $\frac{3}{8}$	486 (500-1 $\frac{3}{8}$ )	
LNAV/VNAV DA		1075-1 $\frac{3}{8}$	492 (500-1 $\frac{3}{8}$ )	
LNAV MDA	1100-1	517 (600-1)	1100-1 $\frac{3}{8}$	517 (600-1 $\frac{3}{8}$ )
<b>C</b> CIRCLING	1100-1 517 (600-1)	1120-1 537 (600-1)	1240-1 $\frac{3}{4}$ 657 (700-1 $\frac{3}{4}$ )	1280-2 $\frac{1}{4}$ 697 (700-2 $\frac{1}{4}$ )

MIRL Rwy 17-35 0  
 REIL Rwy 17 and 35 0

SE-1, 22 APR 2021 to 20 MAY 2021

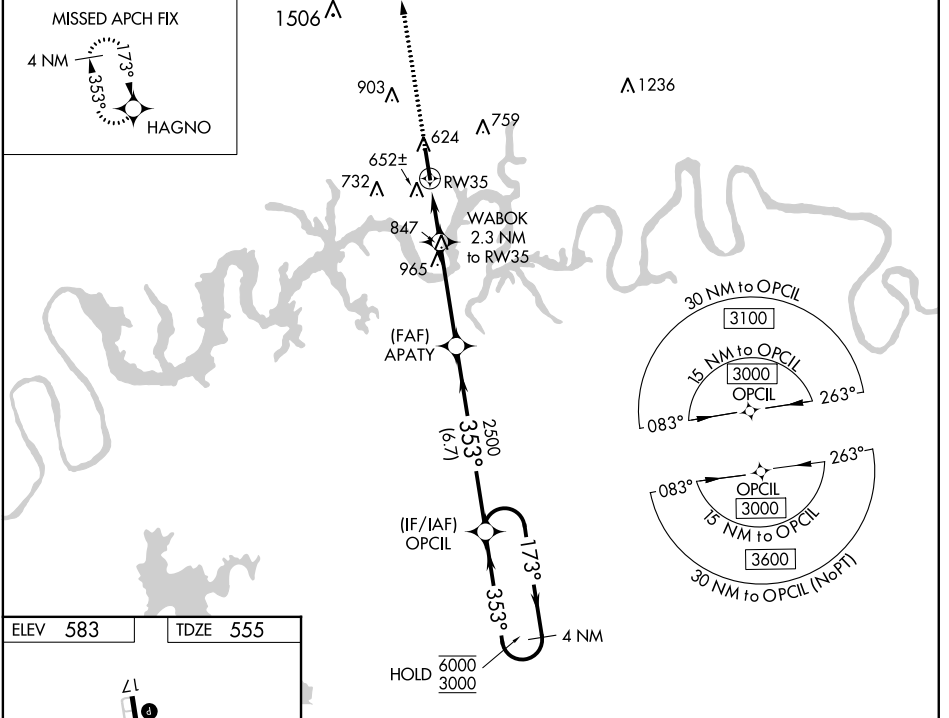
SE-1, 22 APR 2021 to 20 MAY 2021

WAAS CH <b>65627</b> <b>W35A</b>	APP CRS <b>353°</b>	Rwy Idg TDZE Apt Elev	<b>6300</b> <b>555</b> <b>583</b>
--	------------------------	-----------------------------	---

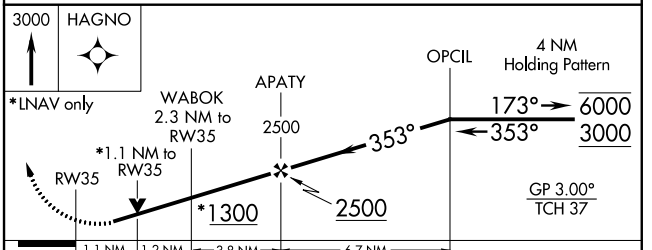
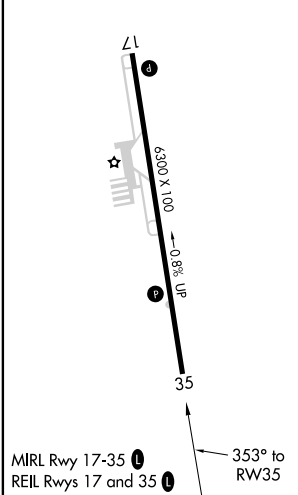
# RNAV (GPS) RWY 35

MUSIC CITY EXEC (X.N.X)

RNP APCH.			MISSED APPROACH: Climb to 3000 direct HAGNO and hold.
For uncompensated Baro-VNAV systems, LNAV/VNAV NA below -16°C or above 54°C. Rwy 35 helicopter visibility reduction below ¼ SM NA.			
AWOS-3 <b>132.725</b>	NASHVILLE APP CON <b>118.4 360.7</b>	GCO <b>135.075</b>	UNICOM <b>123.05 (CTAF) 0</b>



ELEV 583	TDZE 555
----------	----------



3000	HAGNO				
*LNAV only	WABOK 2.3 NM to RW35	APATY 2500	OPCIL 4 NM Holding Pattern		
	*1.1 NM to RW35	*1300	2500	173° → 6000	← 353° 3000
	1.1 NM	1.2 NM	3.8 NM	6.7 NM	
CATEGORY	A	B	C	D	
LPV DA	805-¾		250 (300-¾)		
LNAV/VNAV DA	829-⅞		274 (300-⅞)		
LNAV MDA	920-1		365 (400-1)		
CIRCLING	1100-1 517 (600-1)	1120-1 537 (600-1)	1240-1¾ 657 (700-1¾)	1280-2¼ 697 (700-2¼)	

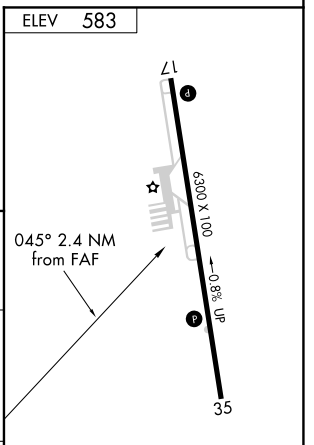
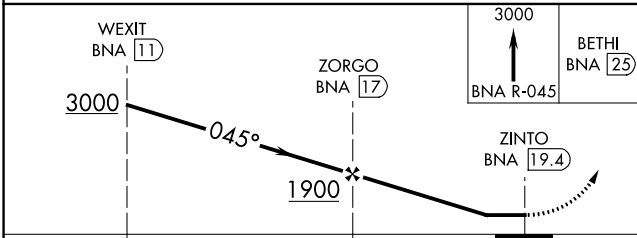
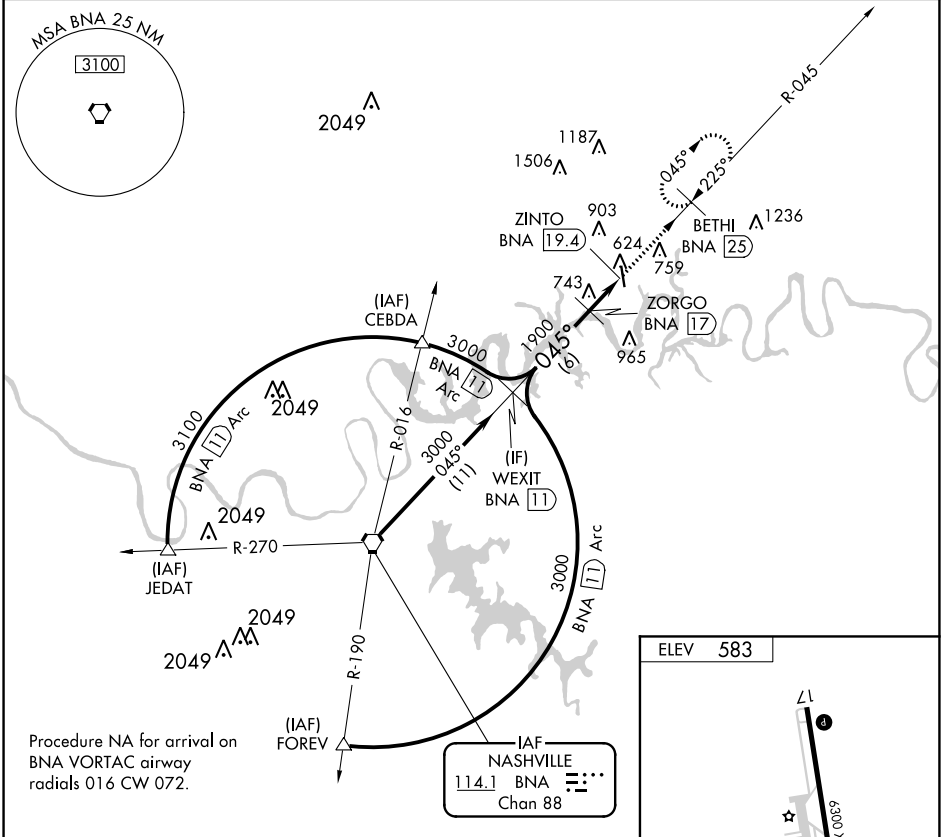
SE-1, 22 APR 2021 to 20 MAY 2021

SE-1, 22 APR 2021 to 20 MAY 2021

VORTAC BNA	APP CRS	Rwy Idg	N/A
<b>114.1</b>	<b>045°</b>	TDZE	N/A
Chan <b>88</b>		Apt Elev	<b>583</b>

**VOR-A**  
MUSIC CITY EXEC (X.N.X)

DME required.		MISSED APPROACH: Climb to 3000 on BNA VORTAC R-045 to BETHI/25 DME and hold, continue climb-in-hold to 3000.	
AWOS-3 <b>132.725</b>	NASHVILLE APP CON <b>118.4 360.7</b>	GCO <b>135.075</b>	UNICOM <b>123.05</b> (CTAF) <b>0</b>



CATEGORY	A	B	C	D
<b>CIRCLING</b>	1100-1 517 (600-1)	1120-1 537 (600-1)	1240-1 $\frac{3}{4}$ 657 (700-1 $\frac{3}{4}$ )	1280-2 $\frac{1}{4}$ 697 (700-2 $\frac{1}{4}$ )

MIRL Rwy 17-35 **0**  
REIL Rwys 17 and 35 **0**

SE-1, 22 APR 2021 to 20 MAY 2021

SE-1, 22 APR 2021 to 20 MAY 2021