

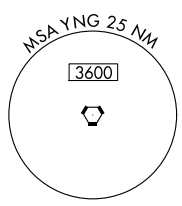
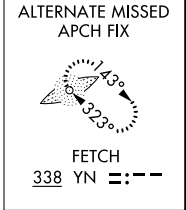
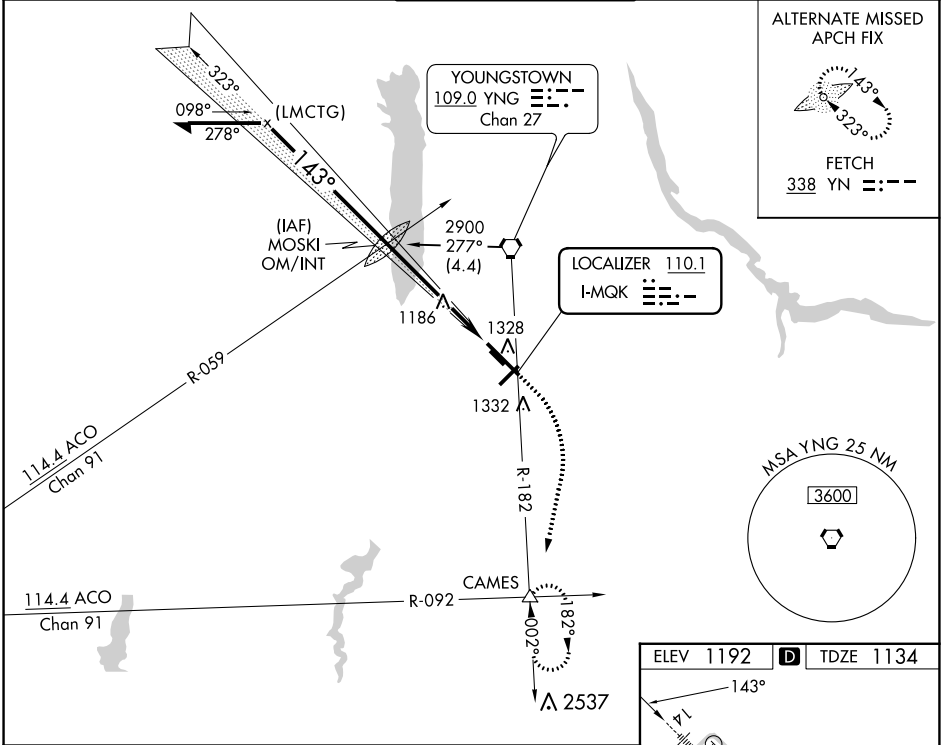
LOC I-MQK 110.1	APP CRS 143°	Rwy Idg 9003 TDZE 1134 Apt Elev 1192
---------------------------	------------------------	---

ILS or LOC RWY 14

YOUNGSTOWN/WARREN RGNL (YNG)

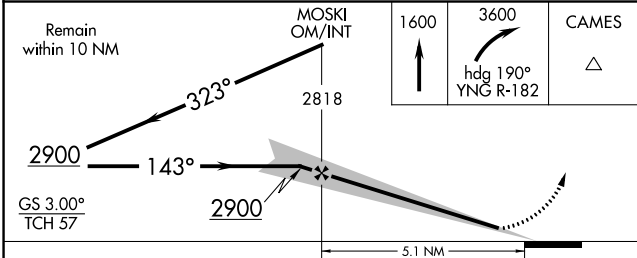
NA Circling Rwy 5 NA at night. ASR	MALS R (AS)	MISSED APPROACH: Climb to 1600 then climbing right turn to 3600 on heading 190° and on YNG VORTAC R-182 to CAMES INT and hold.
--	-------------	--

ATIS 123.75	YOUNGSTOWN APP CON * 133.95 322.3	YOUNGSTOWN TOWER 119.5 263.0	GND CON 121.9 275.8	CLNC DEL 118.25
-----------------------	---	--	-------------------------------	---------------------------



EC-2, 22 FEB 2024 to 21 MAR 2024

EC-2, 22 FEB 2024 to 21 MAR 2024



ELEV 1192	D	TDZE 1134
-----------	----------	-----------

HIRL Rwy 14-32	MIRL Rwy 5-23	REIL Rws 5 and 23			
FAF to MAP 5.1 NM					
Knots	60	90	120	150	180
Min:Sec	5:06	3:24	2:33	2:02	1:42

CATEGORY	A	B	C	D
S-ILS 14		1334-½	200 (200-½)	
S-LOC 14	1580-½	446 (400-½)	1580-1	446 (400-1)
C CIRCLING	1640-1 448 (500-1)	1660-1 468 (500-1)	1740-1½ 548 (600-½)	1760-2 568 (600-2)

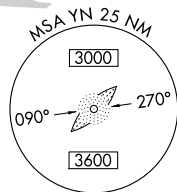
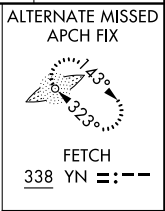
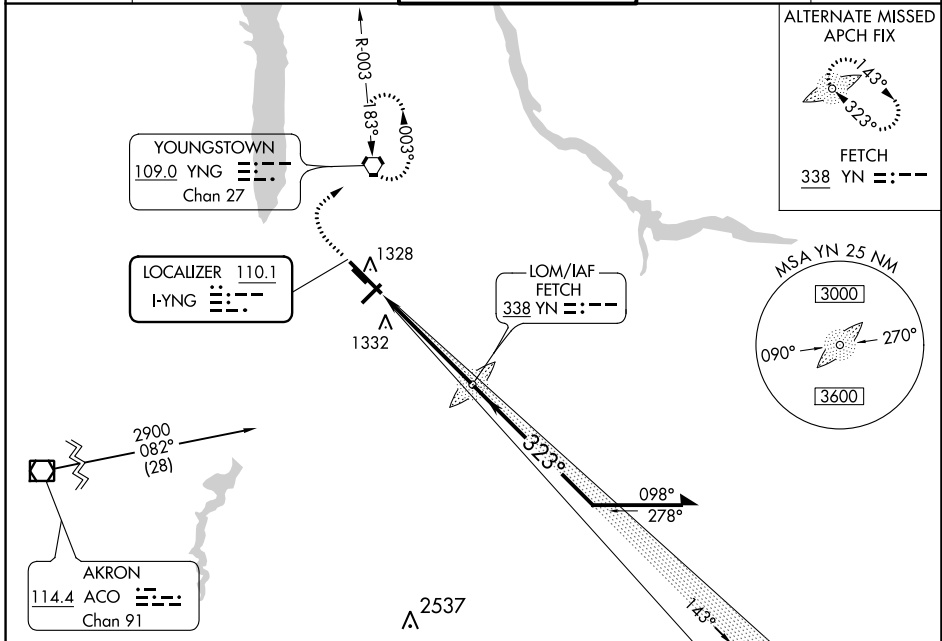
LOC I-YNG 110.1	APP CRS 323°	Rwy Idg TDZE Apt Elev	9003 1186 1192
---------------------------	------------------------	-----------------------------	---

ILS or LOC RWY 32

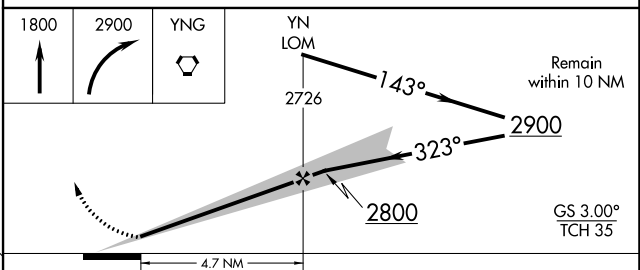
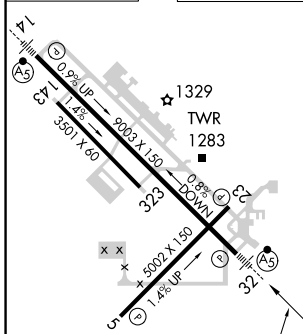
YOUNGSTOWN/WARREN RGNL (YNG)

ADF required.	MALSR	MISSED APPROACH: Climb to 1800 then climbing right turn to 2900 direct YNG VORTAC and hold, continue climb-in-hold to 2900.
ASR	AS	

ATIS 123.75	YOUNGSTOWN APP CON * 133.95 322.3	YOUNGSTOWN TOWER 119.5 263.0	GND CON 121.9 275.8	CLNC DEL 118.25
-----------------------	---	--	-------------------------------	---------------------------



ELEV 1192	D	TDZE 1186
-----------	----------	-----------



HIRL Rwy 14-32	MIRL Rwy 5-23	REIL Rwys 5 and 23	FAF to MAP 4.7 NM		
Knots	60	90	120	150	180
Min:Sec	4:42	3:08	2:21	1:53	1:34
CIRCLING	1640-1 448 (500-1)	1660-1 468 (500-1)	1740-1½ 548 (600-1½)	1760-2 568 (600-2)	

EC-2, 22 FEB 2024 to 21 MAR 2024

EC-2, 22 FEB 2024 to 21 MAR 2024

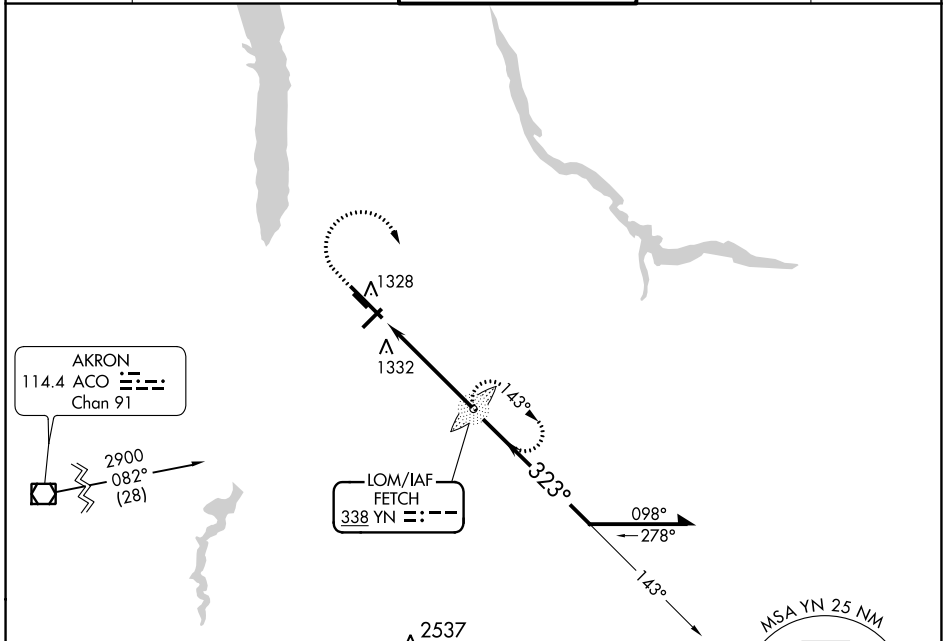
LOM YN 338	APP CRS 323°	Rwy Idg 9003
		TDZE 1186
		Appt Elev 1192

NDB RWY 32

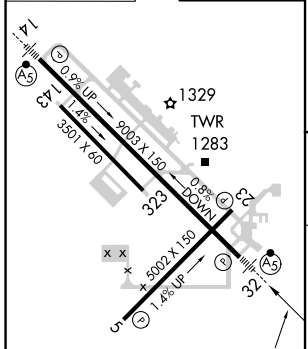
YOUNGSTOWN/WARREN RGNL (YNG)

NA Circling Rwy 5 NA at night. ASR	MALSRL 	MISSED APPROACH: Climb to 1800 then climbing right turn to 2900 direct FETCH LOM and hold.
--	------------	--

ATIS 123.75	YOUNGSTOWN APP CON * 133.95 322.3	YOUNGSTOWN TOWER 119.5 263.0	GND CON 121.9 275.8	CLNC DEL 118.25
-----------------------	---	--	-------------------------------	---------------------------



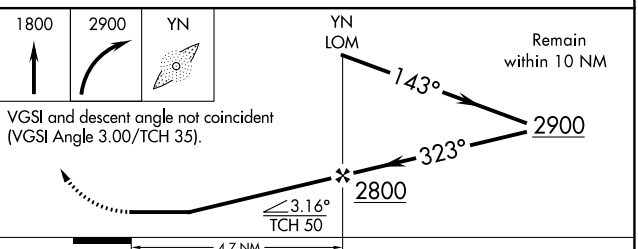
ELEV 1192	D	TDZE 1186
-----------	----------	-----------



HIRL Rwy 14-32
MIRL Rwy 5-23
REIL Rwys 5 and 23

FAF to MAP 4.7 NM

Knots	60	90	120	150	180
Min:Sec	4:42	3:08	2:21	1:53	1:34



CATEGORY	A	B	C	D
S-32	1700/40	514 (600-¾)	1700/55	514 (600-1)
C CIRCLING	1700-1	508 (600-1)	1740-1½ 548 (600-1½)	1760-2 568 (600-2)

EC-2, 22 FEB 2024 to 21 MAR 2024

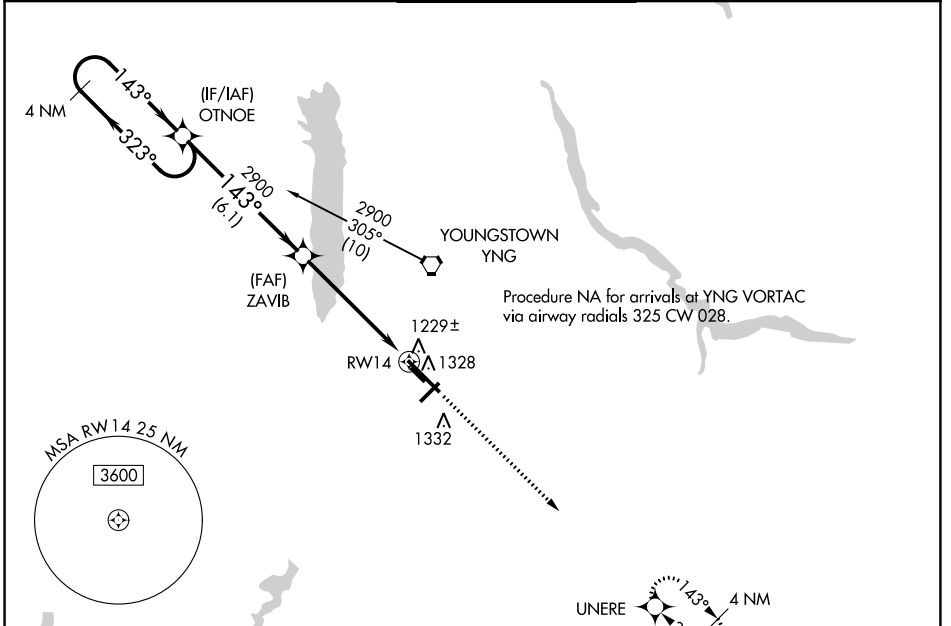
EC-2, 22 FEB 2024 to 21 MAR 2024

WAAS CH 49205 W14A	APP CRS 143°	Rwy Idg 9003 TDZE 1134 Apt Elev 1192
--	------------------------	---

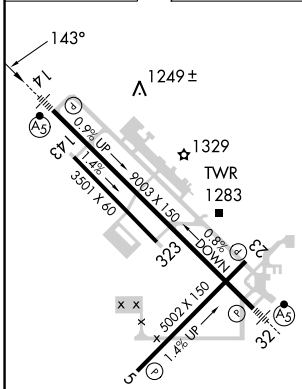
RNAV (GPS) RWY 14

YOUNGSTOWN/WARREN RGNL (YNG)

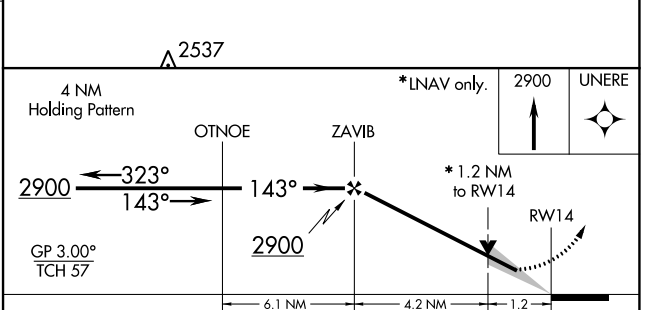
RNP APCH.		MALSR	MISSED APPROACH: Climb to 2900 direct UNERE and hold.	
⚠ For inop ALS, increase LPV all Cats visibility to RVR 5000 and LNAV Cat D visibility to RVR 6000. For uncompensated Baro-VNAV systems, LNAV/VNAV NA below -17°C or above 46°C. Circling Rwy 5 NA at night.				
ATIS 123.75	YOUNGSTOWN APP CON * 133.95 322.3	YOUNGSTOWN TOWER 119.5 263.0	GND CON 121.9 275.8	CLNC DEL 118.25



ELEV 1192	D	TDZE 1134
-----------	----------	-----------



HIRL Rwy 14-32
MIRL Rwy 5-23
REIL Rwy 5 and 23



CATEGORY	A	B	C	D
LPV DA		1384/24	250 (200-1/2)	
LNAV/ VNAV DA		1499/40	365 (400-3/4)	
LNAV MDA	1540/24	406 (400-1/2)	1540/40 406 (400-3/4)	1540/50 406 (400-1)
C CIRCLING	1640-1 448 (500-1)	1660-1 468 (500-1)	1740-1 1/2 548 (600-1 1/2)	1760-2 568 (600-2)

EC-2, 22 FEB 2024 to 21 MAR 2024

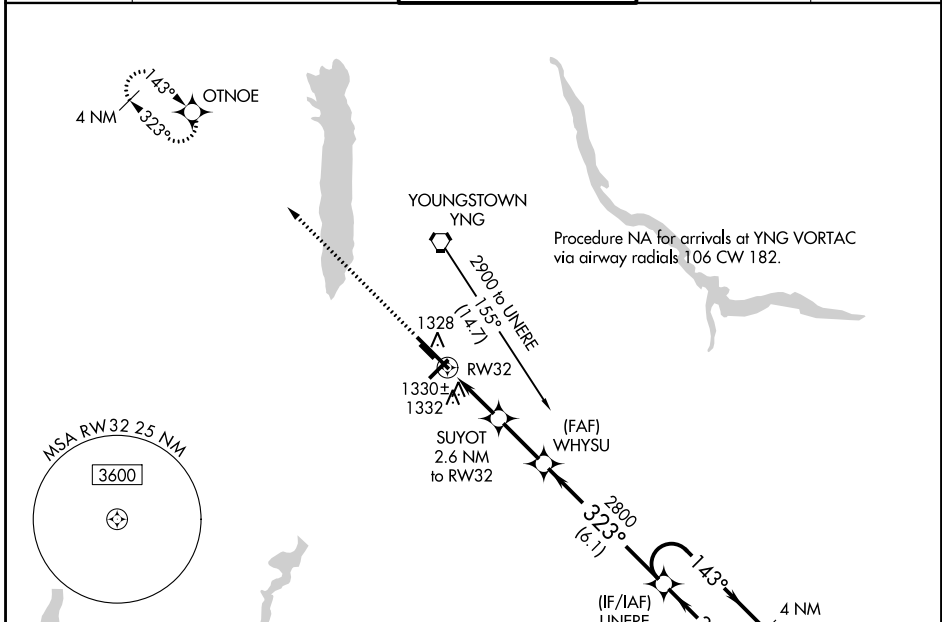
EC-2, 22 FEB 2024 to 21 MAR 2024

WAAS CH 97406 W32A	APP CRS 323°	Rwy Idg TDZE Apt Elev	9003 1186 1192
--	------------------------	-----------------------------	---

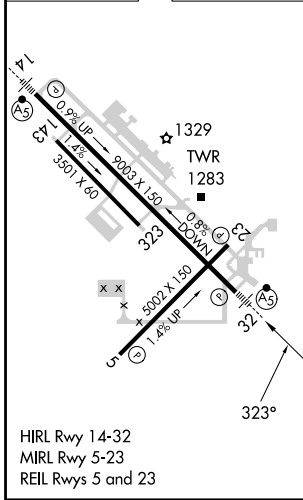
RNAV (GPS) RWY 32

YOUNGSTOWN/WARREN RGNL (YNG)

RNP APCH.		MAISR	MISSED APPROACH: Climb to 2900 direct OTNOE and hold.	
ASR		For uncompensated Baro-VNAV systems, LNAV/VNAV NA below -17°C or above 46°C. For inop ALS, increase LPV all Cats visibility to RVR 5000 and LNAV Cat D visibility to RVR 6000. Circling Rwy 5 NA at night.		
ATIS 123.75	YOUNGSTOWN APP CON * 133.95 322.3	YOUNGSTOWN TOWER 119.5 263.0	GND CON 121.9 275.8	CLNC DEL 118.25



ELEV 1192	D	TDZE 1186
-----------	----------	-----------



YOUNGSTOWN/WARREN, OHIO
Orig-E 26MAR20

A 2537				
2900	OTNOE	4 NM Holding Pattern		
*LNAV only				
SUYOT 2.6 NM to RWY32 WHYSU 2800 UNERE 2800				
*1.1 NM to RWY32 *2040 2800 GP 3.00° TCH 35				
1.1 1.5 2.3 NM 6.1 NM				
CATEGORY	A	B	C	D
LPV DA	1458/24		272 (300-½)	
LNAV/VNAV DA	1639/60		453 (500-1¼)	
LNAV MDA	1580/24		394 (400-½)	
	1640-1		1580/50	
	448 (500-1)		394 (400-1)	
C CIRCLING	1660-1		1740-1½	
	468 (500-1)		548 (600-1½)	
			1760-2	
			568 (600-2)	

41°16'N-80°41'W

YOUNGSTOWN/WARREN RGNL (YNG)

RNAV (GPS) RWY 32

EC-2, 22 FEB 2024 to 21 MAR 2024

EC-2, 22 FEB 2024 to 21 MAR 2024

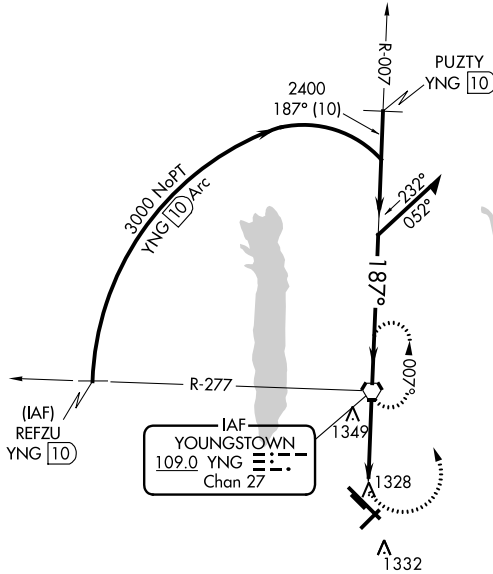
VORTAC YNG 109.0 Chan 27	APP CRS 187°	Rwy Idg TDZE Apt Elev N/A N/A 1192
--	------------------------	--

VOR-A

YOUNGSTOWN/WARREN RGNL (YNG)

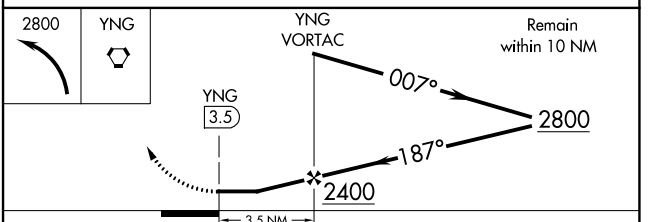
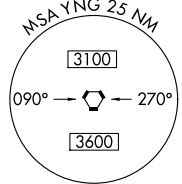
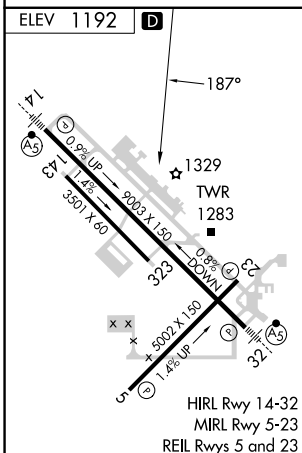
ASR Circling Rwy 5 NA at night. MISSED APPROACH: Climbing left turn to 2800 direct YNG VORTAC and hold, continue climb-in-hold to 2800.

ATIS 123.75	YOUNGSTOWN APP CON * 133.95 322.3	YOUNGSTOWN TOWER 119.5 263.0	GND CON 121.9 275.8	CLNC DEL 118.25
-----------------------	---	--	-------------------------------	---------------------------



EC-2, 22 FEB 2024 to 21 MAR 2024

EC-2, 22 FEB 2024 to 21 MAR 2024



FAF to MAP 3.5 NM					
Knots	60	90	120	150	180
Min:Sec	3:30	2:20	1:45	1:24	1:10
CATEGORY	A	B	C	D	
CIRCLING	1640-1 448 (500-1)	1660-1 468 (500-1)	1740-1½ 548 (600-1½)	1760-2 568 (600-2)	