

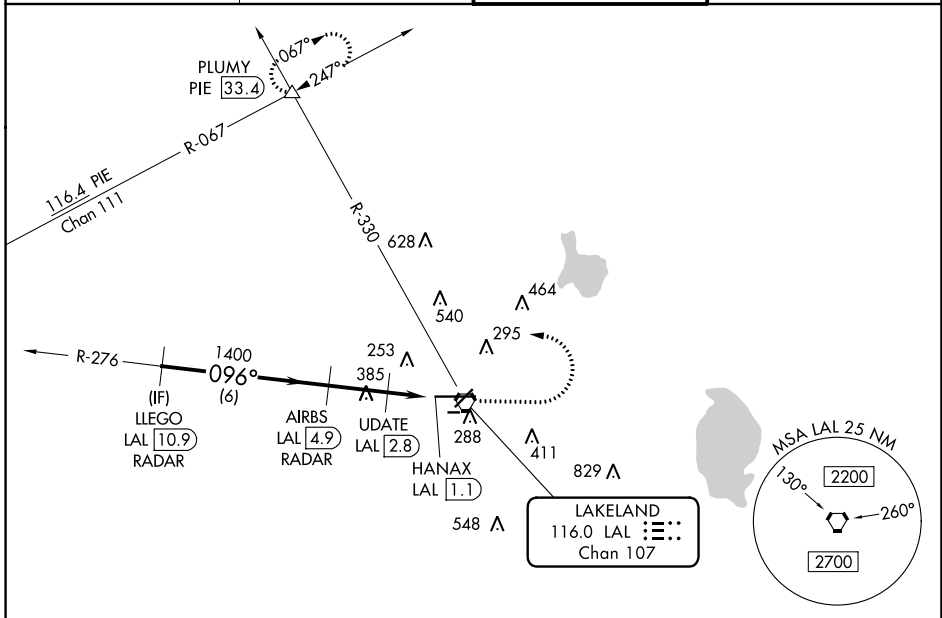
VORTAC LAL 116.0 Chan 107	APP CRS 096°	Rwy Idg 8500 TDZE 132 Apt Elev 142
---	------------------------	---

VOR RWY 10

LAKELAND LINDER INTL (LAL)

RADAR required for procedure entry. DME or RADAR required.		ALSf-2 	MISSED APPROACH: Climb to 1000 then climbing left turn to 2000 on heading 294° and on LAL VORTAC R-330 to PLUMY INT/ PIE 33.4 DME and hold.
	Circling NA to Rwys 8 and 26. Circling Rwy 28 NA at night. For inop ALS, increase S-10 Cat C/D visibility to 1 1/2 SM; increase UDATE fix minimums S-10 Cat C/D visibility to RVR 6000.		

ATIS 118.025	TAMPA APP CON 120.65 290.3	LAKELAND TOWER 124.5 236.775	GND CON 121.4
------------------------	--------------------------------------	--	-------------------------



SE-3, 22 FEB 2024 to 21 MAR 2024

SE-3, 22 FEB 2024 to 21 MAR 2024

ELEV 142		D TDZE 132	
<p>△ 1667</p> <p>LLEGO LAL [10.9] RADAR</p> <p>AIRBS LAL [4.9] RADAR</p> <p>UPDATE LAL [2.8]</p> <p>HANAX LAL [1.1]</p> <p>LAKELAND 116.0 LAL Chan 107</p> <p>PLUMY LAL △</p> <p>VGSi and descent angles not coincident (VGSi Angle 3.00/TCH 71).</p> <p>2000 → 1400 → 700</p> <p>096° heading</p> <p>294° hdg</p> <p>2.98° TCH 52</p> <p>6 NM, 2.1 NM, 0.7, 1.1</p>			
CATEGORY	A	B	C
S-10	700/24	568 (600-1/2)	700-1 1/4
CIRCLING	700-1	558 (600-1)	720-1 1/2
UPDATE FIX MINIMUMS			
S-10	540/24	408 (400-1/2)	540/40
CIRCLING	600-1	660-1	720-1 1/2
<p>TDZ/CL Rwy 10</p> <p>HIRL Rwys 5-23 and 10-28</p> <p>FAF to MAP 3.8 NM</p> <p>Knots: 60 90 120 150 180</p> <p>Min:Seq 3:48 2:32 1:54 1:31 1:16</p>			