

VORTAC LAL 116.0 Chan 107	APP CRS 256°	Rwy Idg TDZE 142 Apt Elev 142
---	------------------------	---

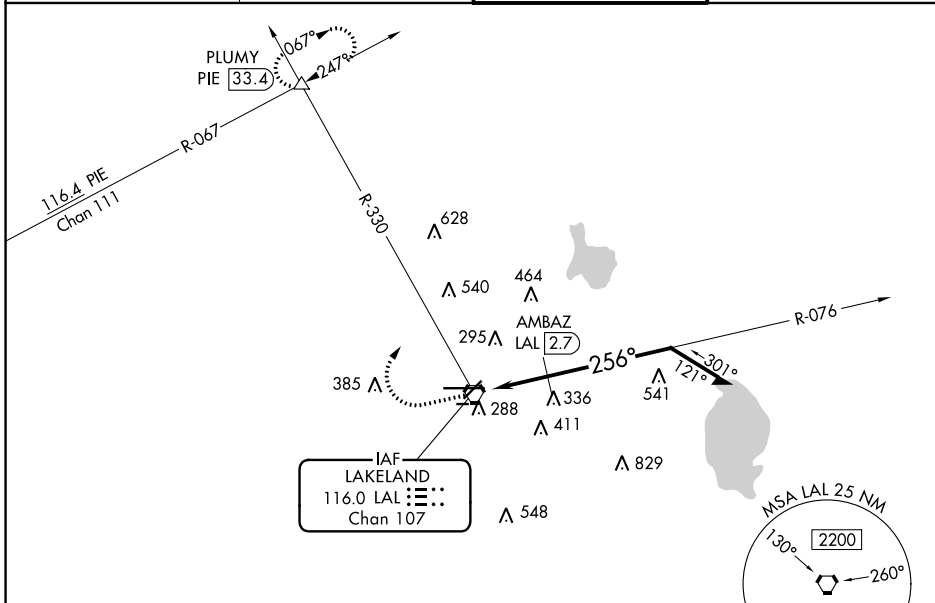
VOR RWY 28

LAKELAND LINDER INTL (LAL)

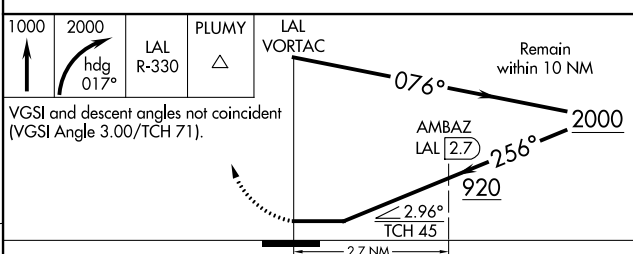
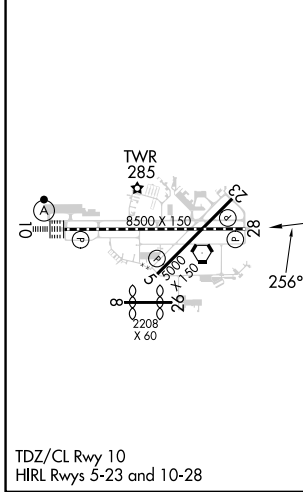
⚠ Circling NA to Rws 8 and 26. Rwy 28 helicopter visibility reduction below 1 SM NA. Straight-in Rwy 28 NA at night, Circling Rwy 28 NA at night.

⚠ MISSED APPROACH: Climb to 1000 then climbing right turn to 2000 on heading 017° and on LAL VORTAC R-330 to PLUMY INT/PIE 33.4 DME and hold.

ATIS 118.025	TAMPA APP CON 120.65 290.3	LAKELAND TOWER 124.5 236.775	GND CON 121.4
------------------------	--------------------------------------	--	-------------------------



ELEV 142	D	TDZE 142
-----------------	----------	-----------------



CATEGORY	A	B	C	D
S-28	920/55 778 (800-1)	920-1¼ 778 (800-1¼)	920-2½	778 (800-2½)
CIRCLING	920-1 778 (800-1)	920-1¼ 778 (800-1¼)	920-2½	778 (800-2½)
AMBAZ FIX MINIMUMS				
S-28	600/55	458 (500-1)	600-1⅜	458 (500-1⅜)
CIRCLING	600-1 458 (500-1)	660-1 518 (600-1)	720-1½ 578 (600-1½)	840-2¼ 698 (700-2¼)

SE-3, 22 FEB 2024 to 21 MAR 2024

SE-3, 22 FEB 2024 to 21 MAR 2024