

# HI-TACAN Z RWY 8

TACAN LFI Chan <b>70</b>	APCH CRS <b>073°</b>	Rwy ldg <b>10,002</b> TDZE <b>8</b> Arprt Elev <b>8</b>
--------------------------	----------------------	---

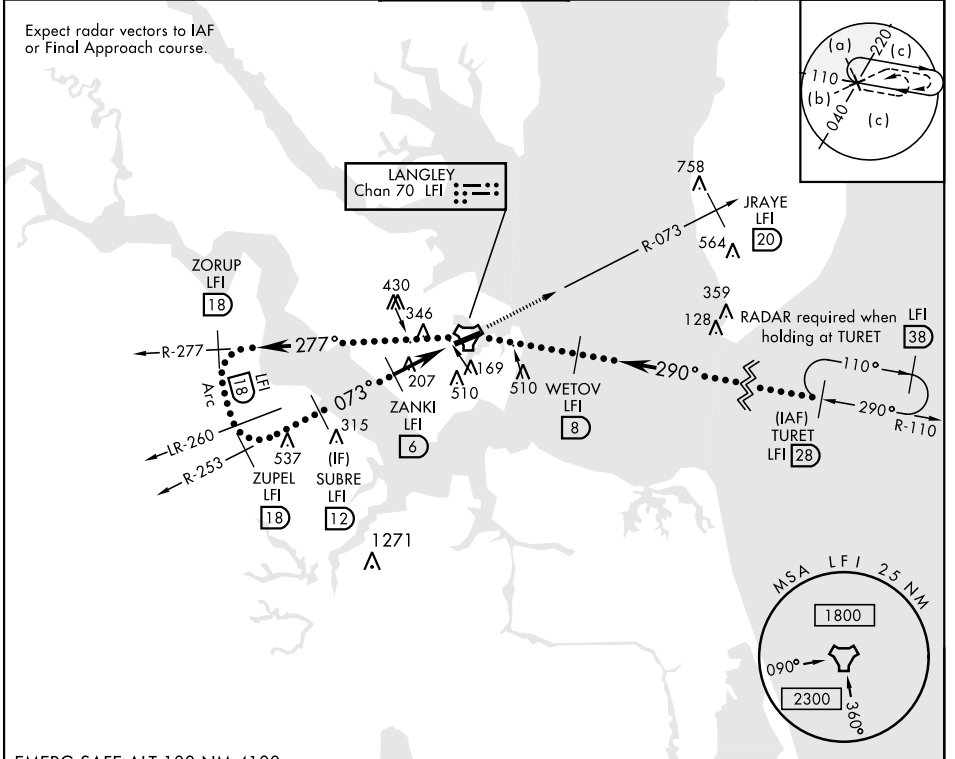
AL-185 [USAF]

LANGLEY AFB (KLFJ)

<p>▼ * When ALS inop, increase CAT CDE vis to 1 3/8 miles. ** Circling S of Rwy 8-26 not authorized.</p>	<p>ALSF-1 </p>	<p>MISSED APPROACH: Climb to 3000 via LFI R-073 to 20 DME (JRAYE), then as instructed by ATC.</p>
--	--------------------	---

ATIS ★ <b>270.1</b>	NORFOLK APP CON <b>125.7 335.625</b>	TOWER ★ <b>125.0 253.5</b>	GND CON <b>121.7 275.8</b>	CLNC DEL <b>118.85 257.625</b>
------------------------	---	-------------------------------	-------------------------------	-----------------------------------

Expect radar vectors to IAF or Final Approach course.



NE-3, 22 FEB 2024 to 21 MAR 2024

NE-3, 22 FEB 2024 to 21 MAR 2024

EMERG SAFE ALT 100 NM 4100

	ELEV 8	TDZE 8	
	215 A	122 A	
	10,002 x 150	TWR 113	
	073° to TACAN	210	
		★ 210	
		HIRL Rwy 8-26	
CATEGORY	C	D	E
S-8 *	480/50	472 (500-1)	
CIRCLING **	700-2 692 (700-2)	760-2 1/2 752 (800-2 1/2)	760-2 3/4 752 (800-2 3/4)

# HI-TACAN Z RWY 8