

LOC/DME I-AAY 110.3 Chan 40	APP CRS 227°	Rwy Idg TDZE Apt Elev	8273 262 266
--	------------------------	-----------------------------	---

ILS or LOC RWY 22R

BILL AND HILLARY CLINTON NTL/ADAMS FLD (LIT)

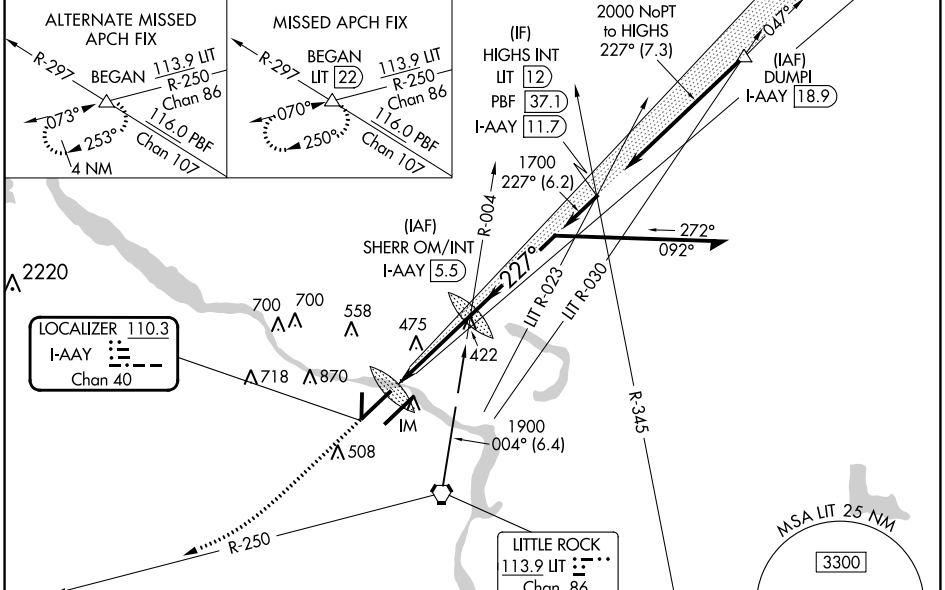
DME required.

Simultaneous approach authorized with Rwy 22L.
For inop ALS, increase S-LOC Cat C/D visibility to RVR 6000.

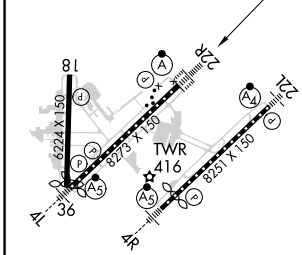
ALS-2

MISSED APPROACH: Climb to 1000 then climbing right turn to 2300 on LIT VORTAC R-250 to BEGAN INT/LIT 22 DME and hold.

D-ATIS 125.65	LITTLE ROCK APP CON 135.4 353.6	ADAMS TOWER 118.7 257.8	GND CON 121.9 339.8	CLNC DEL 118.95
-------------------------	---	-----------------------------------	-------------------------------	---------------------------



ELEV 266	D	TDZE 262
----------	----------	----------



Procedure NA for arrival at LIT VORTAC on V305 and V124 southwest bound.

1000	2300	BEGAN	SHERR OM/INT I-AAY 5.5	Remain within 10 NM
↑	↪ LIT R-250	△		

Altitudes: 1601, 1700, 1900

Bearings: 047°, 227°

GS 3.00° TCH 59'

MIRL Rwy 18-36 HIRL Rws 4R-22L and 4L-22R TDZ/CL Rws 4L, 4R, 22L and 22R FAF to MAP 4 NM				
Knots	60	90	120	150
Min:Sec	4:00	2:40	2:00	1:36
				1:20
CATEGORY	A	B	C	D
S-ILS 22R	462/18 200 (200-½)			
S-LOC 22R	680/24	418 (500-½)	680/40	418 (500-¾)
CIRCLING	820-1 554 (600-1)	1000-1 734 (800-1)	1180-2¾ 914 (1000-2¾)	1180-3 914 (1000-3)

SC-1, 22 FEB 2024 to 21 MAR 2024

SC-1, 22 FEB 2024 to 21 MAR 2024